

Section 12: Power Cords & Plugs

Sub-Section	Page
Cords320
AC Power335
DC Power339



Descriptive information herein supplied directly by individual manufacturers. Not responsible for opinion-oriented information or typographical errors. Not all products may be in stock or available to all EDGE members. Price is subject to change without notice. Restrictions may apply. We reserve the right to limit quantities to stock on hand.

Power Cords & Plugs - Cords



Safety Orange® Extension Cords

Three conductor grounded, type SJTW, -40°C to 60°C, and 300 volts. The conductor is 16 AWG through 12 AWG stranded bare copper per ASTM B-174. The insulation is premium grade color coded PVC. The Jacket is PVC; Orange. The temperature range is -40°C to 60°C and the voltage rating is 300 volts. The power rating in volts is 125.



Part #	AWG Size	Cord Lgth (ft)	Pwr Rating Amps	Pwr Rating Watts
03304.63.04	14	100	13	1625
03318.63.04	16	10	13	1625
03327.63.04	16	25	13	1625
03328.63.04	14	25	15	1875
03354.63.04	16	50	13	1625
03356.63.04	14	50	15	1875
06801.63.04	12	100	15	1875
06826.63.04	12	25	15	1875
06853.63.04	12	50	15	1875

Power Supply Replacement Cords

Two and three conductor, type SJT and SJ. 60°C. 300 and 600 volts. The power rating in volts is 125. The conductor is 18 AWG through 12 AWG stranded bare copper per ASTM B-174. Premium grade color coded PVC insulation. PVC jacket, black or gray. Features straight plug, conductor stripped 5/8" and jacket removed 1 1/2".



300 Volts

Part #	No. of Cond.	AWG Size	Cord Lgth (ft)	Jacket Color	Pwr Rating Amps	Pwr Rating Watts
02524.73.01	3	16 SJT	3	Black PVC	13	1625
04949.60.10	3	16 SJT	9	Gray PVC	13	1625
01950.70.01	3	14	8	Black	15	1875
02548.70.01	3	16	6	Black	13	1625

With Receptacle Only

Part #	No. of Cond.	AWG Size	Cord Lgth (ft)	Jacket Color	Pwr Rating Amps	Pwr Rating Watts
04530.73.01	3	16	3	Black	13A	1625

Power Supply Replacement Cords

Three conductor grounded, type SJ, SJO and SJOW. 60°C. 300 volts. Power rating is 125 volts. Conductor is 18 AWG or 16 AWG stranded bare copper per ASTM B-174. Premium grade color coded EPDM insulation. The jacket is CPE; black. For replacement use. Straight plug. NEMA configuration is 5-15P.



Part #	Type	AWG Size	Cord Lgth (ft)	Pwr Rating Amps	Pwr Rating Watts
04932.70.01	SJ	16	12	13	1625
04926.70.01	SJ	16	6	13	1625



Power Supply Replacement Cords - Type SPT-1 & SPT-3

Three conductor grounded. 60°C. 300 volts. Power rating is 125 volts. Conductor is 18 AWG through 16 AWG stranded bare copper per ASTM B-174. Premium grade color coded PVC insulation. Jacket is PVC; gray or beige. Features conductor stripped 5/8", free end slit 1 1/2". NEMA configuration is 5-15P.



Part #	Type	AWG Size	Cord Lgth (ft)	Jacket Color	Pwr Rating Amps	Pwr Rating Watts
04106.73.10	SPT-3	16	6	Gray	13	1625
04806.73.10	SPT-3	16	6	Gray	13	1625
04803.73.10	SPT-3	16	3	Gray	13	1625
04195.60.17	SPT-1	14	6	Beige	15	1875

Range Cords

Type SRDT. 50 amps. 60°C. 300 volts. The power rating is 250 volts, 50 amps, 12500 watts. Conductor is 8 AWG through 6 AWG stranded bare copper per ASTM B-174. Premium grade PVC; black or gray. Features right angle cap, eyelet ends for safer hookups and strain relief clamp to protect cord from damage caused by pulling or stretching.



Part #	No. of Cond.	AWG Size	Cord Lgth (ft)	Jacket Color
05604.63.10	3	2#6 & 1#8	4	Gray
05606.63.10	3	2#6 & 1#8	6	Gray
00604.63.01	4	2#6 & 2#8	4	Black
00606.63.01	4	2#6 & 2#8	6	Black

Household Powr-Centers®

Three conductor grounded. Type SPT-3 and SJT. 60°C. 300 volts. Power rating is 125 volts. Conductor is 16 AWG or 14 AWG stranded bare copper per ASTM B-174. Premium grade color coded PVC. Jacket is PVC; orange or beige.



Part #	Type	AWG Size	Cord Lgth (ft)	Jacket Color	Pwr Rating Amps	Pwr Rating Watts
00565.63.17	SJT	16	9	Beige	13	1625

Dryer Cords

Type SRDT. 30 Amps. 60°C. 300 volts. Power rating is 250 volts, 30 amps and 7500 watts. Conductor is 10 AWG stranded bare copper per ASTM B-174. Premium grade color coded PVC insulation. Jacket is PVC; black or gray. Features right angle cap, eyelet ends for safer hookups and strain relief clamp to protect cord from damage caused by pulling or stretching.



Part #	No. of Cond.	AWG Size	Cord Lgth (ft)	Jacket Color	NEMA Conf.
05654.63.10	3	3#10	4	Gray	10-30P
05656.63.10	3	3#10	6	Gray	10-30P
01004.63.01	4	4#10	4	Black	14-30P
01006.63.01	4	4#10	6	Black	14-30P

Outdoor Powr-Center® Extension Cords

3 Conductor grounded. Type STW, SJEOOW and SJTW. -40°C to 60°C. 300 and 600 volts. 14 AWG to 12 AWG stranded bare copper per ASTM B-174. Premium grade color code PVC insulation. Jacket is PVC; orange, TPE; blue or yellow. Indoor/outdoor use.

Part #	Type	AWG	Cord Lgth (ft)	Jacket Color	Pwr Rating Watts
00690.63.04	SJTW-300V	14	10	Orange	1875

Power Cords & Plugs - Cords



Low Voltage Landscape Lighting Wire

60°C 150 Volts UL. 12, 14 and 16 AWG fully annealed bare copper per ASTM B-3. Insulation is premium grade black PVC, duplex parallel design for easy tear-down during installation and polarity ridge on one leg for positive circuit identification. Temperature range is -20°C to +60°C. 2 conductor. Power rating is 150 volts.



Part #	AWG	Cord Lgth (ft)	Cond/Strand	Nom. OD in (mm)	Pwr Rating Amps	Pwr Rating Watts
02309.18.01	16	500	26/30	0.155 x 0.296 (3.94 x 7.52)	19	2850
02310.18.01	14	500	41/30	0.170 x 0.354 (4.32 x 8.99)	27	4050
02311.18.01	12	500	65/30	0.190 x 0.385 (4.83 x 9.78)	36	5400

Low Voltage Sprinkler Wire

60°C. 30 volts. 18 AWG fully annealed solid bare copper per ASTM B-3. Insulation is premium grade color coded PVC; premium grade PE jacket, black. Nylon rip cord to facilitate jacket removal. Temperature range is -20°C to 60°C. Power rating is 15 amps, 450 watts.

Part #	No. of Cond.	Cord Lgth (ft)
23804.18.01	4	500
23805.18.01	5	500
23807.18.01	7	500
23810.18.01	10	500

Carolprene® Jacketed Type SJOOW - 90°C 300 Volt UL/CSA Portable Cable

Conductors are 18 through 10 AWG fully annealed stranded bare copper per ASTM B-174. Insulation is premium grade color coded 90°C EPDM. Black Carolprene® jacket. Temperature range is -40°C to +90°C. UL Listed and CSA Certified for indoor and outdoor use. Packaging: 250' (76.2m), 500' (152.4m) and 1000' (304.8m). Other put-ups available. ** Green conductor for grounding only.



Part #	No. Cond.	AWG	Cond. Strand	Nom. Ins. Thick. in (mm)	Nom. OD in (mm)	Current Amps*
01310	2	18	16/30	0.030 (0.76)	0.285 (7.23)	10
01311	3	18	16/30	0.030 (0.76)	0.305 (7.75)	10
01344	4	18	16/30	0.030 (0.76)	0.330 (8.38)	7
01312	2	16	26/30	0.030 (0.76)	0.310 (7.87)	13
01342	3	16	26/30	0.030 (0.76)	0.330 (8.38)	13
01358	2	14	41/30	0.030 (0.76)	0.340 (8.64)	18
01360	3	14	41/30	0.030 (0.76)	0.365 (9.27)	18
01380	3	12	65/30	0.030 (0.76)	0.430 (10.92)	25
01383	3	10	104/30	0.045 (1.14)	0.610 (15.49)	30

Major Appliance Cords

Three conductor grounded, type SPT-3. Fifteen amps. Temperature rating is 60°C and voltage rating is 300 volts. The color of the jacket is beige. Conductors are 12 and 14 AWG stranded bare copper per ASTM B-174. Insulation is premium grade PVC; beige. Applications are air conditioners, refrigerators, freezers, microwaves, and dehumidifiers. Features include a molded right angle cap.



Part #	AWG Size	Length of Cord (Feet)	Power Rating (Volts)	Power Rating (Amps)	Power Rating (Watts)
00436.63.17	14	6	125	15	1875

Thermostat Wire 105°C 300 Volt UL Type CL2

20 and 18 AWG annealed solid bare copper per ASTM B-3. Premium grade color coded PVC. White polyvinylchloride (PVC) jacket. Temperature range is -20°C to +105°C. Industry approvals: UL Listed Type CL2. Nominal ins. thickness is 0.008 inches (0.203mm).



18 AWG Thermostat Wire - 300 Volt - UL Type CL2

Part #	No. of Cond.	Nominal O.D. in (mm)
05582	2	0.145 (3.68)
05583	3	0.154 (3.91)
05584	4	0.170 (4.32)
05585	5	0.193 (4.90)
05586	6	0.200 (5.08)
05587	7	0.210 (5.33)
05588	8	0.230 (5.84)

20 AWG Thermostat Wire - 300 Volt - UL Type CL2

Part #	No. of Cond.	Nominal O.D. in (mm)
05482	2	0.128 (3.25)
05486	6	0.175 (4.45)

Thermostat Wire, Unjacketed

60°C Low voltage and intercom cable. 20 AWG annealed solid bare copper per ASTM B-3. Insulation is premium grade color coded PVC. Temperature range is -20°C to 60°C. Nominal insulation thickness is 0.008 inches (0.203 mm).

Part #	No. Cond.	Nom. OD in (mm)
05782	2	0.098 (2.49)

Lamp Cord Type SPT

60°C 300 Volts UL/CSA. 18 and 16 AWG fully annealed bare or tinned copper per ASTM B-174. Premium grade color coded PVC. Temperature range is -20°C to +60°C. UL Listed and CSA Certified.

Type SPT-1

AWG size is 18. Conductor strand is 41/34. Nominal insulation thickness in inches (mm) is 0.030 (0.76). Nominal O.D. in inches (mm) is 0.110 X 0.210 (2.79 X 5.330). Current amps is 10. Approximate net weight (LBS/M') is 22.

Part #	Jacket Color
02301	Black, White, Brown
02304	Clear Gold (Bare Copper)
02305	Clear Gold (Bare Copper)

Type SPT-2

2 conductor. 16 AWG. Conductor strand is 65/34. Nominal insulation thickness is 0.045 in (1.14mm). Nominal OD is 0.155 x 0.295 inches (3.94 x 7.490 mm). Current amps: 13.

Part # 02303



Power Cords & Plugs - Cords



Carolprene® Jacketed Type SOOW - 90°C 600 Volt UL/CSA Portable Cord

Conductors are 18 through 2 AWG fully annealed stranded bare copper per ASTM B-174. Insulation is premium grade color coded 90°C EPDM. Black Carolprene® jacket. Temperature range is -40°C to +90°C. UL Listed and CSA certified for indoor and outdoor use. Packaging: 250' (76.2 m), 500' (152.4 m), 1000' (304.8 m). Other put-ups available. ** Green conductor for grounding only. Standard carton length is 250'.



Part #	No. Cond.	AWG	Cond. Strand	Nom. Ins. Thick. in (mm)	Nom. OD in (mm)	Current Amps**
02765	3	16	26/30	0.030 (0.76)	0.390 (9.91)	13
02766	4	16	26/30	0.030 (0.76)	0.420 (10.67)	10
02723	2	14	41/30	0.045 (1.14)	0.510 (12.96)	18
02762	3	14	41/30	0.045 (1.14)	0.535 (13.59)	18
02768	4	14	41/30	0.045 (1.14)	0.575 (14.61)	15
02725	3	12	65/30	0.045 (1.14)	0.595 (15.11)	25
02726	4	12	65/30	0.045 (1.14)	0.650 (16.51)	20
02728	3	10	104/30	0.045 (1.14)	0.660 (16.76)	30
02727	4	10	104/30	0.045 (1.14)	0.715 (18.16)	25

Type SJ - 60°C 300 Volt UL/CSA Portable Cord

Conductors are 18 through 10 AWG fully annealed stranded bare copper per ASTM B-174. Insulation is premium-grade, color-coded EPDM. Jacket is rubber and black. Temperature range is -40°C to +60°C. Packaging is 250' (76.2m). Other put-ups also available. Standard carton is 250' (1000' for 01302, 01303, 01305). **Green conductor for grounding only.

Part #	No. Cond.	AWG	Cond. Strand	Nom. Ins. Thick. in (mm)	Nom. OD in (mm)	Current Amps**
01306	3	16	26/30	0.030 (0.76)	0.330 (8.38)	13
01362	3	14	41/30	0.030 (0.76)	0.365 (9.27)	18
01369	3	12	65/30	0.030 (0.76)	0.430 (10.92)	25

Thermostat Wire - 60°C 300 Volt CSA Type LVT

18 AWG annealed solid bare copper per ASTM B-3. Premium grade color coded PVC insulation. Jacket is Polyvinylchloride (PVC), brown. Temperature range is -20°C to 60°C. Nominal insulation thickness is 0.016 inches (0.41 mm).

Part #	No. Cond.	Nom. OD in (mm)
05092	2	0.210 (5.33)



3 Conductor Medicord - Green Dot Power Supply Cords

Down Angle Plug

NEMA 5-15P pin. One end molded PVC clear hospital grade plug PH-814D. Other end outer jacket stripped 2" (51mm), conductor stripped and twisted 5/8" (16mm). Temperature rating is 60°C. Packaging - units per carton is S-15. Color coding is North American.



Part #	Lgth ft (m)	AWG Stranding	Nominal O.D. inch (mm)	Rating	Cord Type	Jacket Color
17039A	10 (3.05)	18 (41 x 34)	.315 (8.00)	1250 watts 10A-125V	SJT	Matte gray (clear plug)

Straight Plug

NEMA 5-15P pin. One end is molded PVC clear or opaque gray, hospital grade plug PH-813. Other end outer jacket stripped 2" (51mm), conductors stripped and twisted 5/8" (16mm). Temperature rating is 60°C. Packaging - units per carton are S-15. Color coding is for North American. AWG stranding is 18 (41 x 34).



Part #	Lgth ft (m)	Nominal O.D. inch (mm)	Rating	Cord Type	Jacket Color
17022A	10 (3.05)	.315 (8.00)	1250 watts 10A-125V	SJT	Matte gray (clear plug)
17030	8 (2.44)	.315 (8.00)	1250 watts 10A-125V	SJT	Gray (clear plug)



We stock more of:
Cords • AC Power • DC Power

Power Cords & Plugs - Cords



3 Conductor Plastic - Original Equipment Cords - Unshielded

Non-detachable with plug. NEMA 5-15P pin. One end is molded PVC grounding plug PH-290B, PH-185 or PH-173. Other end outer jacket stripped 2" (51mm), conductors stripped and twisted 5/8" (16mm). Temperature rating is 60°C (except 17747 rating is 105°C). Jacket color is black (except 17405 and 17407 are gray).



Part #	Length ft (m)	Pkg-Units per Ctn	Color Coding	AWG Stranding	Nominal O.D. inch (mm)	Rating	Cord Type
17405	6 (1.83)	B-50, S-25	North American	18 (16 x 30)	.315 (8.00)	1250 watts 10A-125V	SJT
17407	8 (2.44)	B-50, S-25	North American	18 (16 x 30)	.315 (8.00)	1250 watts 10A-125V	SJT
17513	9'10" (3)	H-100, H-25	International	18 (41 x 34)	.315 (8.00)	1250 watts 10A-125V	SJT
17515	9'10" (3)	H-50, H-25	International	16 (65 x 34)	.340 (8.64)	1875 watts 15A-125V	SJT
17517	9'10" (3)	H-50, H-25, S-25	International	14 (41 x 30)	.380 (9.65)	1875 watts 15A-125V	SJT
17747	6'7" (2)	H-100, H-25	International	18 (41 x 34)	.246 (6.25)	1250 watts 10A-125V	SVT
17748	6'7"	H-100, H-25	International	18 (41 x 34)	.315 (8.00)	1250 watts 10A-125V	SJT
40407	8 (2.44)	H-50	North American	18 (16 x 30)	.315 (8.00)	1250 watts 10A-125V	SJT
40414	8 (2.44)	H-25	North American	16 (26 x 30)	.340 (8.64)	1625 watts 13A-125V	SJT

3 Conductor - Plastic - Detachable - Shielded

Duofoil® and Braid Shielded

NEMA 5-15P pin. One end is molded PVC grounding plug PH-290B. Other end is PVC grounding connector PH-386A IEC 320-C13. Power cords used in applications involving extremely high EMI and RFI environments feature foil shield construction, providing 100% coverage plus another layer of 85% tinned copper braid for added protection. Temperature rating is 60°C. Color coding is for international. AWG stranding is 18 (41 x 34). Nominal O.D. is .307 inch (7.80mm). Rating is 1250 watts 10A-125V. Cord type is SVT. Jacket color is black.



Part #	Lgth ft (m)	Pkg-Units per Ctn
17026A	18 (.45)	B-25, S-25
17042A	24 (.61)	B-1, S-2
17660	6'7" (2)	H-25
17661	9'10" (3)	H-25

Volex Shielded

NEMA 5-15P pin. One end molded PVC grounding plug PH-290B, PH-185 or PH-173. Other end molded PVC grounding connector PH-386A, PH-386E IEC 320-C13. Temperature rating is 60°C. (Part numbers 17725 and 17729 rating is 105°C.) Color coding is for international. Cord is foil shielded. Jacket color is black.



Part #	Lgth ft (m)	Pkg-Units per Ctn	AWG Stranding	Nominal O.D. inch (mm)	Rating	Cord Type
17600	6'7" (2)	H-100, H-25, S-25	18 (41 x 34)	.328 (8.33)	1250 watts 10A-125V	SJT
17601	9'10" (3)	H-100, H-25	18 (41 x 34)	.328 (8.33)	1250 watts 10A-125V	SJT
17602	6'7" (2)	H-100, H-25	16 (65 x 34)	.353 (8.97)	1625 watts 13A-125V	SJT
17603	9'10" (3)	H-50, H-25	16 (65 x 34)	.353 (8.97)	1625 watts 13A-125V	SJT
17604	6'7" (2)	H-50, H-25	14 (41 x 30)	.390 (9.91)	1875 watts 15A-125V	SJT
17605	9'10" (3)	H-50, H-25	14 (41 x 30)	.390 (9.91)	1875 watts 15A-125V	SJT
17725	6'7" (2)	H-100, H-25	18 (41 x 34)	.253 (6.43)	1250 watts 10A-125V	SVT
17729	6'7" (2)	H-100, H-25	18 (41 x 34)	.328 (8.33)	1250 watts 10A-125V	SJT
17742	6'7" (2)	H-100, H-25	18 (41 x 34)	.253 (6.43)	1250 watts 10A-125V	SVT
17743	9'10" (3)	H-100, H-25	18 (41 x 34)	.243 (6.43)	1250 watts 10A-125V	SVT

3 Conductor - Plastic - Original Equipment Cords - Unshielded and Shielded



Non-Detachable with Plug - Foil and Braid Shielded

NEMA 5-15P pin. One end molded PVC grounding plug PH-290B. Drain wire is 22 AWG for SVT cord. Other end outer jacket stripped 2" (51mm). Conductors stripped and twisted 5/8" (16mm). Temperature rating is 60°C. Color coding is international. Cord is foil plus 85% braid. Jacket color is black.

Part #	Lgth ft (m)	Pkg-Units per Ctn	AWG Stranding	Nominal O.D. inch (mm)	Rating	Cord Type
17650	6'7" (2)	H-25	18 (41 x 34)	.307 (7.80)	1250 watts 10A-125V	SVT
17651	9'10" (3)	H-25	18 (41 x 34)	.307 (7.80)	1250 watts 10A-125V	SVT

Power Cords & Plugs - Cords



3 Conductor - Plastic - Original Equipment Cords - Unshielded and Shielded (cont.)

Non-Detachable with Plug - Shielded

NEMA 5-15P. One end is molded PVC grounding plug PH-290B, PH-185 or PH-173. Drain wire is 22 AWG for SVT cord and 20 AWG for SJT cord. Other end outer jacket stripped 2" (51mm). Conductors stripped and twisted 5/8" (16mm). Temperature rating is 60°C (except 17720 - 105°C). Color coding is for international. Jacket color is black.



Part #	Lgth ft (m)	Pkg-Units per Ctn	AWG Stranding	Nominal O.D. inch (mm)	Rating	Cord Type
17613	9'10" (3)	H-100, H-25	18 (41 x 34)	.340 (8.64)	1250 watts 10A-125V	SJT
17614	6'7" (2)	H-100, H-25	16 (65 x 34)	.365 (9.27)	1625 watts 13A-125V	SJT
17615	9'10" (3)	H-50, H-25	16 (65 x 34)	.365 (9.27)	1625 watts 13A-125V	SJT
17616	6'7" (2)	H-100, H-25	14 (41 x 30)	.402 (10.21)	1875 watts 15A-125V	SJT
17617	9'10" (3)	H-50, H-25	14 (41 x 30)	.402 (10.21)	1875 watts 15A-125V	SJT
17720	6'7" (2)	H-100, H-25	18 (41 x 34)	.270 (6.86)	1250 watts 10A-125V	SVT
17740	6'7" (2)	H-100, H-25	18 (41 x 34)	.270 (6.86)	1250 watts 10A-125V	SVT
17741	9'10" (3)	H-100, H-25	18 (41 x 34)	.270 (6.86)	1250 watts 10A-125V	SVT

Non-Detachable with Plug - Unshielded

NEMA 5-15P pin. One end molded PVC grounding plug PH-290B or PH-185. Other end outer jacket stripped 1 1/2" (38mm). Conductors stripped and twisted 5/8" (16mm). Temperature rating is 60°C. Color coding is for North American. Jacket color is gray.



Part #	Lgth ft (m)	Pkg-Units per Ctn	AWG Stranding	Nominal O.D. inches (mm)	Rating	Cord Type
17237	6 (1.83)	B-50, S-10	18 (41 x 34)	.246 (6.25)	1250 watts 10A-125V	SVT
17239	8 (2.44)	B-50, S-10	18 (41 x 34)	.246 (6.25)	1250 watts 10A-125V	SVT
17276	20 (6.10)	H-10	16 (26 x 30)	.340 (8.64)	1625 watts 13A-125V	SJT

Non-Detachable with Plug - Unshielded

NEMA 5-15P pin. One end molded PVC grounding plug AEC-30. Other end outer jacket stripped 2" (51mm). Conductors stripped and twisted 5/8" (16mm). Temperature rating is 60°C. Packaging - units per carton are H-50. Color coding is for North American. Cord type is SJT. Jacket color is black.



Part #	Lgth ft (m)	AWG Stranding	Nominal O.D. inch (mm)	Rating
17506A	6 (1.83)	18 (16 x 30)	.325 (8.26)	1250 watts 10A-125V
17507A	6 (1.83)	16 (26 x 30)	.345 (8.76)	1625 watts 13A-125V
17508A	6 (1.83)	14 (41 x 30)	.380	1875 watts 15A-125V
17509A	8 (2.44)	14 (41 x 30)	.380 (9.65)	1875 watts 15A-125V

Non-Detachable with Plug and Strain Relief - Unshielded

NEMA 5-15P pin. One end molded PVC grounding plug PH-290B or PH-185. Other end molded PVC strain relief PH-129. Conductors stripped and twisted 5/8" (16mm). 8" (203mm) from strain relief to end of leads. Fits many tools by Black & Decker, MET, Ram, Sioux, Thor and others. Temperature rating is 60°C. Packaging - units per carton are H-50. Color coding is for North American. Cord type is SJT. Jacket color is black.



Part #	Lgth ft (m)	AWG Stranding	Nominal O.D. inch (mm)	Rating
40410	6 (1.8)	18 (16 x 30)	.315 (8.0)	1250 watts 10A-125V
40420	10 (3.0)	16 (26 x 30)	.340 (8.64)	1625 watts 13A-125V

Volex Shielded

Drain wire is 22 AWG for SVT cord and 20 AWG for SJT cord. One end outer jacket stripped 2" (51mm). Conductors stripped and twisted 5/8" (16mm). Other end molded PVC grounding connector PH-386A or PH-386E IEC 320 C-13. Foil shield drain wire is terminated to the ground pin. If serve shield is used copper strands are terminated to the ground pin. Temperature rating is 60°C. Color coding is for international. Jacket color is black. *Dual rated at 10A-250V.



Part #	Lgth ft (m)	Pkg-Units per Ctn	AWG Stranding	Nominal O.D. inch (mm)	Rating*	Cord Type
17619	9'10" (3)	H-100, H-25	18 (41 x 34)	.340 (8.63)	1250 watts 10A-125V	SJT
17620	6'7" (2)	H-100, H-25	16 (65 x 34)	.353 (8.97)	1625 watts 13A-125V	SJT
17621	9'10" (3)	H-50, H-25	16 (65 x 34)	.353 (8.97)	1625 watts 13A-125V	SJT
17750	9'10" (3)	H-100, H-25	18 (41 x 34)	.270 (6.86)	1250 watts 10A-125V	SVT
17749	6'7" (2)	H-100, H-25	18 (41 x 34)	.270 (6.86)	150 watts 10A-125V	SVT

Power Cords & Plugs - Cords



3 Conductor - Plastic - Original Equipment Cords - Unshielded and Shielded (cont.)

Volex Shielded

Drain wire is 22 AWG for SVT cord and 20 AWG for SJT. One end outer jacket stripped 2" (51mm). Conductors stripped and twisted 5/8" (16mm). Other end molded PVC grounding connector PH-910 IEC 320 C-13. Foil shield drain wire is terminated to the ground pin. Temperature rating is 60°C. Color coding is international. AWG stranding is 18 (41 x 34). Rating is 1250 watts 10A-125V - Dual rated at 10A-250V. Jacket color is black.



Part #	Lgth ft (m)	Pkg-Units per Ctn	Nominal O.D. inch (mm)	Cord Type
17751	6'7" (2)	H-100, H-25	.270 (6.86)	SVT

Wiring Harness - Unshielded

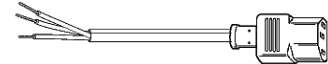
Drain wire is 22 AWG for SVT cord and 20 AWG for SJT. Outer jacket stripped 2" (51mm). Conductors stripped and twisted 5/8" (16mm). Molded PVC grounding connector PH-910 IEC 320 C-13. Foil shield drain wire is terminated to the ground pin. Temperature rating is 60°C. Color coding is for international. Cord type is SJT. Jacket color is black. *Dual rated at 10A-250V.



Part #	Lgth ft (m)	Pkg-Units per Ctn	AWG Stranding	Nominal O.D. inch (mm)	Rating*
17536	6'7" (2)	H-100, H-25	18 (41 x 34)	.315 (8.00)	1250 watts 10A-125V
17537	9'10" (3)	H-100, H-25	18 (41 x 34)	.315 (8.00)	1250 watts 10A-125V
17539	9'10" (3)	H-50, H-25	16 (26 x 30)	.340 (8.64)	1625 watts 13A-125V

Wiring Harness - Unshielded

One end outer jacket stripped 2" (51mm). Conductors stripped and twisted 5/8" (16mm). Other end molded PVC grounding connector PH-386, PH-386A or PH-386E IEC 320-C13. Temperature rating is 60°C. Color coding is for international. Jacket color is black. *Dual rated at 10A-250V.



Part #	Lgth ft (m)	Pkg-Units per Ctn	AWG Stranding	Nominal O.D. inch (mm)	Rating*	Cord Type
17254	7'6" (2.29)	H-100, H-25	18 (41 x 34)	.246 (6.25)	1250 watts 10A-125V	SVT
17518	6'7" (2)	H-100, H-25	18 (41 x 34)	.315 (8.00)	1250 watts 10A-125V	SJT
17519	9'10" (3)	H-100, H-25	18 (41 x 34)	.315 (8.00)	1250 watts 10A-125V	SJT
17520	6'7" (2)	H-100, H-25	16 (26 x 30)	.340 (8.64)	1625 watts 13A-125V	SJT
17521	9'10" (3)	H-50, H-25	16 (26 x 30)	.340 (8.64)	1625 watts 13A-125V	SJT

Retractable Cords

Retractable cords keep telephones and microphone cables from tangling and cluttering desk tops, communications consoles and the front seats of motor vehicles. Volex manufactures a full line of high-quality retractile coiled cord products for a wide number of applications: telephone equipment; ham and citizen band radios; hand and desktop microphones; language lab equipment; musical equipment; computer keyboards; mobile controls and mobile communications equipment; and a variety of assorted industrial applications. Specially designed conductors and shields are built into retractile cables to withstand rugged use and minimize the need for replacement.



SJO Stranded Conductors

Bare copper, rubber insulated, cabled with fillers. Paper tape wrap, black neoprene jacket. 12" straight portion each end (except 6" straight portion on 8603). Jacket removed 1 1/2" each end. Color code: 1 (white), 2 (black), 3 (green). Insulation thickness is .031 inch (.79mm). Jacket thickness is .045 inch (1.14mm).

Part #	No. of Cond.	Retracted Lgth inch (cm)	Extended Lgth ft (m)	AWG Stranding	Nominal O.D. inch (mm)	Nominal Coil O.D. inch (mm)
8603	3	12 (30.5)	6 (1.8)	16 (65 x 34)	.370 (9.40)	1.37 (34.8)
9482	4	24 (61.0)	12 (3.7)	18 (42 x 34)	.385 (9.78)	1.40 (35.6)
9483	4	48 (121.9)	25 (7.6)	18 (42 x 34)	.385 (9.78)	1.40 (35.6)
9484	3	24 (61.0)	12 (3.7)	16 (65 x 34)	.370 (9.40)	1.37 (34.8)
9485	3	48 (121.9)	25 (7.6)	16 (65 x 34)	.370 (9.40)	1.37 (34.8)

SVO Stranded Conductors

Bare copper, rubber insulated, cabled with fillers. Paper tape wrap, black Neoprene jacket. 12" straight portion each end (except 6" straight portion on 8601). Jacket removed 1 1/2" each end. Voltage rating is 300 volts. UL 62 Flex Cord and Fixture Wire. Underwriters Laboratories, Inc. Listed. Certified to CSA Standards. Color code (1) white, (2) black, (3) green, (4) red. AWG stranding is 18 (42 x 34). Insulation thickness is .016 inch (.41mm). Jacket thickness is .045 inch (1.14mm).

Part #	No. Cond.	Retracted Lgth inch (cm)	Extended Lgth ft (m)	Nominal O.D. inch (mm)	Nominal Coil O.D. inch (mm)
8601	2	12 (30.5)	6 (1.8)	.270 (6.86)	.925 (23.5)
9476	2	24 (61.0)	12 (3.7)	.270 (6.86)	.925 (23.5)
9477	2	48 (121.9)	25 (7.6)	.270 (6.86)	.925 (23.5)
9478	3	24 (61.0)	12 (3.7)	.275 (6.99)	.935 (23.8)
9479	3	48 (121.9)	25 (7.6)	.275 (6.99)	.935 (23.8)

Power Cords & Plugs - Cords



2 and 3 Conductor Rubber - Original Equipment Cords - Unshielded

Temperature rating is 60°C. Color coding is for North American. Jacket color is black.



NEMA 1-15P pin. One end is non-polarized molded PVC cord holder plug PH-298-SN-O. Other end outer jacket stripped 1 1/2" (38mm), conductors stripped and twisted 5/8" (16mm). For mixers, blenders and appliances using fractional horsepower motors that do not require a three-conductor grounding cord.

Part #	Lgth ft (m)	Pkg-Units per Ctn	AWG Stranding	Nominal O.D. inch (mm)	Rating	Cord Type
40328	8 (2.44)	H-100	16 (26 x 30)	.319 (8.10)	1625 watts 13A-125V	SJ

NEMA 5-15P pin. One end is molded PVC grounding plug PH-185 or PH-290B. Other end outer jacket stripped 2" (51mm), conductors stripped and twisted 5/8" (16mm). For all tools such as sanders, grinders and polishers requiring grounding. Except for double insulated tools, UL requires three conductor cords on all portable electric tools. When replacing cords, make certain to use only equal or larger AWG.

Part #	Lgth ft (m)	Pkg-Units per Ctn	AWG Stranding	Nominal O.D. inch (mm)	Rating	Cord Type
17406	6 (1.83)	B-50, S-25	18 (16 x 30)	.315 (8.00)	1250 watts 10A-125V	SJ
17408	8 (2.44)	B-50, S-25	18 (16 x 30)	.315 (8.00)	1250 watts 10A-125V	SJ
17409	8 (2.44)	B-50, S-25	18 (16 x 30)	.315 (8.00)	1250 watts 10A-125V	SJO
17412	12 (3.66)	B-25, S-15	18 (16 x 30)	.315 (8.00)	1250 watts 10A-125V	SJ
17419	9 (2.74)	B-25, S-15	16 (26 x 30)	.340 (8.64)	1625 watts 13A-125V	SJ
17422	12 (3.66)	B-25, S-15	16 (26 x 30)	.340 (8.64)	1625 watts 13A-125V	SJ
17425	15 (4.57)	S-15	16 (26 x 30)	.340 (8.64)	1625 watts 13A-125V	SJ

3 Conductor Rubber - Original Equipment Cords - Unshielded

Retractable

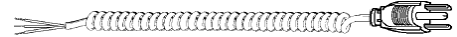
NEMA 5-15P. One end molded PVC grounding plug PH-185, PH-173 or PH-290B. Other end outer jacket stripped 2" (51mm). Conductors stripped and tinned 1/2" (13mm). Temperature rating is 60°C. Packaging - units per carton are S-25. Color coding is for North American. Cord type is SJO. Jacket color is black.



Part #	Lgth ft (m)	AWG Stranding	Nominal O.D. inch (mm)	Rating	Lgth Extended	Lgth Retracted
17447	1 (.30)	18 (41 x 34)	1.33 (33.9)	1250 watts 10A-125V	6' (1.83m)	12"
17448	1 (.30)	16 (65 x 34)	1.37 (34.5)	1625 watts 13A-125V	6" (1.83m)	12"
17449	2 (.61)	16 (65 x 34)	1.37 (34.5)	1625 watts 13A-125V	12' (3.66m)	24"

Unshielded

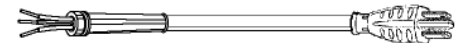
NEMA 5-15P pin. One end molded PVC grounding plug PH-175 - Part number 17513A is AEC-30. Other end outer jacket stripped 2" (51mm). Conductors stripped and twisted 3/4" (19mm) - Part number 17513A is 5/8" (16mm). Temperature rating is 60°C. Color coding is for North American. AWG stranding is 14 (41 x 30). Nominal O.D. is .380 inch (9.65mm). Rating is 1875 watts 15A-125V. Jacket color is black.



Part #	Lgth ft (m)	Pkg - Units per Ctn	Cord Type
17513A	6 (1.83)	H-40	SJO
17629	9 (2.74)	B-10, S-5	SJ
17635	15 (4.57)	S-5	SJ

Unshielded with Plug and Strain Relief

NEMA 5-15P. One end molded PVC grounding plug PH-185. Other end molded Neoprene strain relief H-1340. Conductors stripped and twisted 5/8". 8" from strain relief to end of leads. Temperature rating is 60°C. Color coding is for North American. AWG stranding is 16 (26 x 30). Nominal O.D. is .340 inch (8.64 mm). Rating is 1625 watts 13A-125V. Jacket is black.



Part #	Lgth ft (m)	Pkg - Units per Ctn	Cord Type
40430	10 (3.0)	H-50	SJO Neoprene

Power Cords & Plugs - Cords



3 Conductor - Plastic - Detachable - Unshielded and Shielded

Unshielded

Part #	Lgth ft (m)	Pkg - Units per Ctn	AWG Stranding	Nominal O.D. inch (mm)	Rating	Cord Type
17506	6'7" (2)	H-50, H-25	18 (41 x 34)	.315 (8.00)	1250 watts 10A-125V	SJT
17507	9'10" (3)	H-100, H-25	18 (41 x 34)	.315 (8.00)	1250 watts 10A-125V	SJT
17508	6'7" (2)	H-100, H-25	16 (26 x 30)	.340 (8.64)	1625 watts 13A-125V	SJT
17509	9'10" (3)	H-50, H-25	16 (26 x 30)	.340 (8.64)	1625 watts 13A-125V	SJT

2 Conductor - Plastic and Rubber

Cooling Fan Cords

One end is non-polarized, conductors split 1 1/2" (38mm), stripped 1/2" and soldered 13mm. Other end is molded PVC connector PH-707A. Cooling fan cords designed with plug end at a 45° angle to fit contour of most cooling fans with terminal tabs perpendicular to air flow direction - fits terminal tabs ranging from .020" thickness x .110 - .120" width to .360" length on 5/16" centers. Temperature rating is 105°C. Packaging - units per carton are B-100. AWG stranding is 18 (41 x 34) bare copper. Nominal O.D. is .110 x .220 inch (2.79 x 5.59 mm). Rating is 250 watts 1A-250V. Cord type is SPT-1 105°C VW-1. Jacket color is black.



Part #	Length ft (m)
17902	2 (.6)
17903	3 (.9)
17904	4 (1.2)
17905	5 (1.5)
17906	6 (1.8)

Shaver Cords

NEMA 1-15P pin. One end is non-polarized PVC plug PH-S289SN. Other end is molded PVC connector PH-322G. Fit .093" diameter pins. Centerline spacing is .250". For all Remington, Schick Flexamatic, late model Sunbeam, Norelco, Eltron, latest Ronson. Temperature rating is 60°C. Color coding is for North American. AWG stranding is 27 AWG tinsel. Nominal O.D. is .094" x .170" (2.39 x 4.32 mm). Rating is 50 watts .4A-125V.

Part #	Lgth ft (m)	Pkg-Units per Ctn	Cord Type	Jacket Color
40121	6 (2.84)	B-100	TPT	Black



3 Conductor Medicord - Hospital Grade

*Volex SJT type low-leakage 60 Hz power cord reduces the hazards of shock due to current leakage between the two conductors and from the conductors out through the jacket. Maximum leakage at 120 VAC is 7 microamps from each circuit conductor to the grounding conductor, and 15 microamps from each circuit conductor through the cord jacket (when tested in accordance with UL 1581). Designed for hospital use and critical medical applications. Helps equipment meet the requirements of UL 544. #Regular SJT cords are UL Listed and CSA certified. CSA does not recognize SJT low-leakage cords. ^CSA certified.

Detachable Straight Plug

NEMA 5-15P pin. One end is molded PVC clear or opaque gray hospital grade plug PH-813. Other end is molded PVC grounding connector PH-386A or PH-386H. Temperature rating is 60°C. Packaging - units per carton are S-15. Color coding is for North American. AWG stranding is 18 (41 x 34). Part number 17016 AWG stranding is 16 (65 x 34).



Part #	Lgth ft (m)	Nominal O.D. inch (mm)	Rating	Cord Type	Jacket Color
17015	8 (2.44)	.430 (10.93)	1250 watts 10A-125V	SJT, low leakage*	Gray (clear plug)
17016	8 (2.44)	.475 (12.06)	1625 watts 13A-125V	SJT, low leakage*	Gray (clear plug)
17020A	10 (3.05)^	.315 (8.00)	1250 watts 10A-125V	SJT#	Matte gray (clear plug)
17021A	10 (3.05)^	.315 (8.00)	1250 watts 10A-125V	SJT#	Matte gray (gray plug)
17031	8 (2.44)^	.315 (8.00)	1250 watts 10A-125V	SJT#	Gray (clear plug)

Down Angle Plug

NEMA 5-15P pin. One end is molded PVC clear hospital grade plug AEC-60. Other end outer jacket stripped 2 1/2" (63.50mm). Conductors stripped and twisted 5/8" (16mm). Temperature rating is 60°C. Packaging - units per carton are H-40. Color coding is for North American. AWG stranding is 14 (41 x 30). Rating is 1875 watts 15A-125V. Cord type is SJT. Jacket color is gray.



Part #	Lgth ft (m)	Nominal O.D. inch (mm)
17510A	10 (3.05)^	.380 (9.65)

Down Angle Plug

NEMA 5-15P pin. One end is molded PVC clear hospital grade plug PH-814D. Other end is molded PVC grounding connector PH-386A. Temperature rating is 60°C. Packaging - units per carton are S-15. Color coding is for North American. AWG stranding is 18 (41 x 34). Rating is 1250 watts 10A-125V. Cord type is SJT#. Jacket color is matte gray (clear plug).



Part #	Lgth ft (m)	Nominal O.D. inch (mm)
17040A	10 (3.05)	.315 (8.00)

Power Cords & Plugs - Cords



3 Conductor - Plastic - Detachable - Unshielded

NEMA 6-15P pin. One end is molded PVC grounding plug PH-44 (250 volt plug). Other end molded grounding connector PH-386, PH-386A IEC 320-C13. Note: No polarity requirement for NEMA 6-15. Temperature rating is 60°C. Packaging - units per carton are H-25. Color coding is for international. AWG stranding is 18 (41 x 34). Rating is 2500 watts 10A-250V. Jacket color is black.



Part #	Lgth ft (m)	Nominal O.D. inch (mm)	Cord Type
17566	6'7" (2)	.246 (6.25)	SVT
17568	6'7" (2)	.315 (8.00)	SJT
17569	9'10" (3)	.315 (8.00)	SJT

NEMA 5-15P pin. One end is molded PVC grounding plug PH-290B. Other end is molded PVC 3-contact connector PH-163. Temperature rating is 60°C. AWG stranding is 18 (41 x 34). Nominal O.D. is .246 inch (6.25mm). Rating is 875 watts 7A-125V. Cord type is SVT.



Part #	Lgth ft (m)	Pkg-Units per Ctn	Color Coding	Jacket Color
17280	7'6" (2.29)	B-50, S-10	International	Black or gray
17952	8 (2.44)	B-50	North American	Gray

NEMA 5-15P pin. One end is molded PVC grounding plug PH-290B, PH-185 or PH-173. Other end is molded PVC connector PH-386, PH-386A or PH-386E IEC 320-C13. Temperature rating is 60°C. (Part numbers 17757 and 17758 rating is 105°C.)



Part #	Lgth ft (m)	AWG Stranding	Nominal O.D. inch (mm)	Rating	Cord Type	Jacket Color
17000A	3 (.91)	18 (41 x 34)	.246 (6.25)	1250 watts 10A-125V	SVT	-
17001A	3 (.91)	16 (26 x 30)	.340 (8.64)	1625 watts 13A-125V	SJT	-
17002A	1'6" (.46)	18 (41 x 34)	.246 (6.25)	1250 watts 10A-125V	SVT	-
17041A	24 (.61)	16 (26 x 30)	.315 (8.00)	1625 watts 13A-125V	SJT	-
17250	7'6" (2.29)	18 (41 x 34)	.246 (6.25)	1250 watts 10A-125V	SVT	Black or beige
17251	7'6" (2.29)	18 (41 x 34)	.246 (6.25)	1250 watts 10A-125V	SVT	Black or beige
17255	7'6" (2.29)	16 (26 x 30)	.340 (8.64)	1625 watts 13A-125V	SJT	Black
17500	6'7" (2)	18 (41 x 34)	.315 (8.00)	1250 watts 10A-125V	SJT	Black
17501	9'10" (3)	18 (41 x 34)	.315 (8.00)	1250 watts 10A-125V	SJT	Black
17502	6'7" (2)	16 (26 x 30)	.340 (8.64)	1625 watts 13A-125V	SJT	Black
17503	9'10" (3)	16 (26 x 30)	.340 (8.64)	1625 watts 13A-125V	SJT	Black
17504	6'7" (2)	14 (41 x 30)	.380 (9.65)	1875 watts 15A-125V	SJT	Black
17505	9'10" (3)	14 (41 x 30)	.380 (9.65)	1875 watts 15A-125V	SJT	Black
17757	7'6" (2.29)	18 (41 x 34)	.246 (6.25)	1250 watts 10A-125V	SVT	Black
17758	6'7" (2)	18 (41 x 34)	.315 (8.00)	1250 watts 10A-125V	SJT	Black



3 Conductor - Plastic - Detachable - Unshielded and Shielded

Foil Shielded

One end is molded PVC grounding plug PH-388A or PH-388B, IEC 320-C14. Other end is molded PVC grounding connector PH-386 or PH-386E, IEC 320-C13. Temperature rating is 60°C. Packaging - units per carton are H-100, H-25. Color coding is for international. Jacket color is black. *Dual rated at 10A-250V.



Part #	Lgth ft (m)	AWG Stranding	Nominal O.D. inch (mm)	Rating	Cord Type
17624	3'3" (1)	18 (41 x 34)	.328 (8.33)	1250 watts 10A-125V*	SJT foil shielded
17625	3'3" (1)	16 (65 x 34)	.353 (8.97)	1625 watts 13A-125V*	SJT foil shielded
17753	3'3" (1)	18 (41 x 34)	.253 (6.43)	1250 watts 10A-125V*	SVT foil shielded

Foil Shielded

NEMA 5-15P pin. Molded PVC grounding plug PH-290B or PH-185. Molded PVC right angle grounding connector PH-910 IEC 320-C13. Temperature rating is 60°C. Color coding is for international. Jacket color is black.



Part #	Lgth ft (m)	Pkg - Units per Ctn	AWG Stranding	Nominal O.D. inch (mm)	Rating	Cord Type
17606	6'7" (2)	H-100, H-25	18 (41 x 34)	.328 (8.33)	1250 watts 10A-125V	SJT
17607	9'10" (3)	H-75, H25	18 (41 x 34)	.328 (8.33)	1250 watts 10A-125V	SJT
17608	6'7" (2)	H-100, H-25	16 (65 x 34)	.353 (8.97)	1625 watts 13A-125V	SJT
17609	9'10" (3)	H-50, H-25	16 (65 x 34)	.353 (8.97)	1625 watts 13A-125V	SJT
17745	6'7" (2)	H-100, H-25	18 (41 x 34)	.253 (6.43)	1250 watts, 10A-125V	SVT
17746	9'10" (3)	H-100, H-25	18 (41 x 34)	.253 (6.43)	1250 watts 10A-125V	SVT

Unshielded

One end is molded PVC grounding plug PH-388A or PH-388B, IEC 320-C14. Other end is molded PVC grounding connector PH-386A or PH-386E, IEC 320-C13. Temperature rating is 60°C. Color coding is for international. Cord type is SJT. Jacket color is black. *Dual rated at 10A-250V.



Part #	Lgth ft (m)	Pkg-Units per Ctn	AWG Stranding	Nominal O.D. inch (mm)	Rating
17523	1'8" (.50)	B-100, B-25	18 (41 x 34)	.315 (8.00)	1250 watts 10A-125V*
17524	3'3" (1)	H-100, H-25	18 (41 x 34)	.315 (8.00)	1250 watts 10A-125V*
17525	3'3" (1)	H-100, H-25	16 (26 x 30)	.340 (8.64)	1625 watts 13A-125V*

Power Cords & Plugs - Cords



3 Conductor - Plastic - Detachable - Unshielded and Shielded cont.

NEMA 5-15P pin. One end molded PVC grounding plug PH-290D. Other end molded PVC right angle grounding connector PH-910 IEC 320-C13.



Temperature rating is 60°C. Color coding is for international. Jacket color is black.

3 Conductor - Plastic - Detachable - Special Use

Detachable with Full Mounting Ears - Unshielded

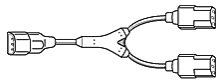
NEMA 5-15P pin. One end molded PVC grounding plug PH-290B. Other end molded PVC grounding connector PH-386G IEC 320-C13. Temperature rating is 60°C. Color coding is for international. AWG stranding is 18 (41 x 34) Rating is 1250 watts 10A-125V. Cord type is SVT. Jacket color is black.



Part #	Lgth ft (m)	Pkg-Units per Ctn	Nominal O.D. inch (mm)
17550	6'7" (2)	H-100, H-25	.246 (6.25)
17734	6'7" (2)	H-25	.253 (6.43)

Y-Cords

One end molded PVC grounding AEC-150 IEC 320 C14. (Part numbers 17272A, 17273A, 17274A and 17275A grounding plug is AEC-30.) Other end molded PVC grounding connector AEC 250A IEC 320



C13. Temperature rating is 60°C. Packaging - units per carton are B-25. Color coding is for North American. Cord type is SJT. Jacket color is black.

Part #	Length	AWG Stranding	Nominal O.D. inch (mm)	Rating
17268A	6' overall, 2' legs	18 (41 x 34)	.315 (8.00)	1250 watts 10A-125V
17269A	10' overall, 2' legs	18 (41 x 34)	.315 (8.00)	1250 watts 10A-125V
17270A	6' overall, 2' legs	16 (65 x 34)	.340 (8.00)	3250 watts 13A-250V
17271A	10' overall 2' legs	16 (65 x 34)	.340 (8.00)	3250 watts 13A-250V
17272A	6' overall, 2' legs	18 (41 x 34)	.315 (8.00)	1250 watts 10A-125V
17273A	10' overall, 2' legs	18 (41 x 34)	.315 (8.00)	1250 watts 10A-125V
17274A	6' overall, 2' legs	16 (65 x 34)	.340 (8.00)	3250 watts 13A-250V
17275A	10' overall, 2' legs	16 (65 x 34)	.340 (8.00)	3250 watts 13A-250V



Appliance and Electronic Cords

Appliance Type Cord

NEMA 1-15P pin. One end is non-polarized molded plug AEC-22R. Other end conductors split 1 1/2" (38mm) stripped and twisted 1/2". Temperature rating is 60°C. Color coding is for North American. AWG stranding is 18 (41 x 34). Rating is 1250 watts 10A-125V.



Part #	Lgth ft (m)	Pkg-Units per Ctn	Nominal O.D. inch (mm)	Cord Type	Jacket Type
17503A	6 (1.83)	H-50	.106 x .208 (2.69 x 5.28)	SPT-1	Black

Appliance Type Cord

NEMA 1-15P pin. One end is non-polarized molded PVC cord-holder plug PH-289-SN-G. Other end outer jacket stripped 1 1/2" (38mm), conductors stripped and twisted 5/8" (16mm). For food mixers, blenders and small appliances. Temperature rating is 60°C. Color coding is for North American. AWG stranding is 18 (41 x 34). Rating is 1250 watts 10A-125V.



Part #	Lgth ft (m)	Pkg-Units per Ctn	Nominal O.D. inch (mm)	Cord Type	Jacket Type
17205	6 (1.83)	B-50	.243 (6.17)	SVT	Black, gray

SPT Parallel Cords

NEMA 1-15P pin. One end has polarized molded PVC plug, PH-S 289-S. Other end has conductors split 1 5/8" (41.28mm), stripped and twisted 5/8" (16mm). Temperature ratings is 60°C. Color coding is ribbed neutral. AWG stranding is 18 (41 x 34). Nominal O.D. is .110 x .220 (2.79 x 5.59). Rating is 1250 watts 10A-125V. Cord type is SPT-1. For radios, desk fans and small appliances. Long life plastic resists cracking and aging.



Part #	Lgth ft (m)	Pkg-Units per Ctn	Jacket Color
17109	9 (2.74)	B-50, S-25 (available in brown only)	Brown, white
40112	12 (3.66)	H-50	Brown, white

SPT Parallel Cords

NEMA 1-15P pin. One end is molded PVC plug PH-S298SN. Other end molded PVC round pin connector PH-98A. Fits latest hand held food mixer models such as Dormeyer, G.E., Hamilton Beach, Sunbeam and Westinghouse. Temperature rating is 60°C. Packaging - units per carton are H-50. AWG stranding is 18 (41 x 34). Cord type is SPT-2.



Part #	Lgth ft (m)	Nominal O.D. inch (mm)	Rating	Jacket Color
40186	6 (1.83)	.144 x .277 (3.66 x 7.04)	875 watts 7A-125V	White

SPT Parallel Cords

NEMA 5-15P pin. One end molded PVC plug AEC-30. Other end conductors split 2" (51mm), stripped and twisted 1/2" (12.7mm). Temperature rating is 60°C. Packaging - units per carton are H-50. Color coding is North American. AWG stranding is 18 (41 x 34). Cord type is SPT-2.



Part #	Lgth ft (m)	Nominal O.D. inch (mm)	Rating	Jacket Color
17504A	6 (1.83)	.175 x .385 (4.45 x 9.78)	1250 watts 10A-125V	Black

Power Cords & Plugs - Cords



Appliance and Electronic Cords (cont.)

Type HPN Heating Appliance Cord

NEMA 1-15P pin. One end is non-polarized molded PVC plug PH-289-SN. Other end conductors split 1 7/16" (36.5mm) stripped and twisted 5/8" (16mm). Temperature rating is 90°C. Packaging - units per carton H-50. Cord type is HPN. Jacket color is black.



Part #	Lgth ft (m)	AWG Stranding	Nominal O.D. inch (mm)	Rating
40806	6 (1.83)	18 (41 x 34)	.140 x .276 (3.56 x 7.01)	1250 watts 10A-125V

Laptop Computers and Small Electronic Devices

NEMA 1-15P pin. One end is non-polarized molded PVC plug, PH-S 289-SN-T and other end is molded IEC 320/C7 connector, PH-913. Temperature rating is 60°C. AWG stranding is 18 (41 x 34). Nominal O.D. is .144 x .280 (3.66 x 7.11). Rating is 312.5 watts 2.5A-125V. Cord type is SPT-2.

Part #	Length ft (m)	Pkg-Units per Ctn	Jacket Color
17038A	6'7" (2)	H-25, S-25	Gray or Black

Vacuum Cleaner Replacement Cords - 2 Conductor

One end non-polarized, molded round PVC plug PH-661. Other end jacket stripped 1 1/2" (38mm). Conductors stripped and twisted 5/8" (15.8mm).



Part #	Lgth ft (m)	Pkg-Units per Ctn	AWG Stranding	Jacket Color
40285	20 (6.10)	H-25	18 (41 x 34)	Beige

One end non-polarized, molded PVC cord-holder pivot plug PH-772. Other end molded PVC strain relief PH-219. Conductors stripped and twisted 5/8" (15.9mm). 4 1/8" (105mm) from strain relief to end. For several Hoover and Sunbeam models requiring a molded strain relief.



Part #	Lgth ft (m)	Pkg-Units per Ctn	AWG Stranding	Jacket Color
40223	20 (6.10)	H-50	18 (41 x 34)	White
40231	30 (9.14)	H-50	18 (41 x 34)	Black, brown or white

One end non-polarized, molded PVC cord-holder pivot plug PH-772. Other end molded PVC strain relief PH-779. Conductors stripped and twisted 5/8" (15.9mm). 4 1/2" (105mm) from strain relief to end. For use on Hoover vacuum cleaners with flat handles.



Part #	Lgth ft (m)	Pkg-Units per Ctn	AWG Stranding	Jacket Color
40224	20 (6.10)	H-50	18 (41 x 34)	White
40232	30 (9.14)	H-50	18 (41 x 34)	White

Power Nozzle - 3 Conductor - Replacement Cords

Molded PVC pin plug PH-780D. Molded PVC shrouded connector PH-780A. Three conductor power nozzle cord. For use on Rainbow/Rexair vacuum cleaners. Temperature rating is 60°C. Color coding is for North American. AWG stranding is 18 (41 x 34). Nominal O.D. is .246 inch (6.25mm). Rating is 875 watts 7A-125V. Cord type is SVT.



Part #	Length ft (m)	Pkg-Units per Ctn	Jacket Color
40219	103 (2.62)	H-50	Brown



Vacuum Cleaner Replacement Cords - 2 Conductor

NEMA 1-15P pin. Temperature rating is 60°C. Color coding is for North American. Nominal O.D. is .243 inch (6.17mm). Rating is 1250 watts 10A-125V. (Part numbers 40335 and 40434 rating is 1500 watts 12A-125V.) Cord type is SVT.

One end non-polarized, molded PVC cord-holder pivot plug PH-772. Other end jacket stripped 3" (76mm). Conductors stripped and twisted 1/2" (12.7mm). For use on commercial type vacuum cleaners.



Part #	Lgth ft (m)	Pkg-Units per Ctn	AWG Stranding	Jacket Color
40297	50 (15.24)	H-15	18 (41 x 34)	Orange or black
40335	30 (9.14)	H-25	17 (52 x 34)	Black
40336	40 (12.19)	H-25	18 (41 x 34)	Black

One end molded PVC cord-holder, pivot plug PH-772. Other end jacket stripped 1 1/2" (38mm). Conductors stripped and twisted 5/8" (15.9mm). Fits standard home vacuum cleaners. Packaging - units per carton are H-50. AWG stranding is 18 (41 x 34).



Part #	Lgth ft (m)	Jacket Color
40222	20 (6.10)	Gray or white
40230	30 (9.14)	Gray, white or brown

One end non-polarized, molded PVC cord-holder pivot plug PH-772. Other end molded PVC strain relief PH-327C. Jacket stripped 4" (101mm). Conductors stripped and twisted 5/16" (8mm). 10 1/2" (267mm) from strain relief to end. Fits Eureka vacuum cleaners. Strain relief attaches to handle.



Part #	Lgth ft (m)	Pkg-Units per Ctn	AWG Stranding	Jacket Color
40301	30 (9.14)	H-50	18 (41 x 34)	Beige

One end molded PVC cord-holder, pivot plug PH-772. Other end jacket stripped 3" (76mm). Conductors stripped and twisted 1/2" (12.7mm). Extra flexible 60° cordage.



Part #	Lgth ft (m)	Pkg-Units per Ctn	AWG Stranding	Jacket Color
40434	40 (12.19)	H-25	17 (52 x 34)	Black

One end non-polarized, molded PVC cord-holder pivot plug PH-772. Other end molded PVC strain relief PH-643. Ring terminals for #8 screw. 3 1/2" (89mm) from strain relief to end. Fits Rainbow/Rexair vacuum cleaners.



Part #	Lgth ft (m)	Pkg-Units per Ctn	AWG Stranding	Jacket Color
40216	20 (6.10)	H-50	18 (41 x 34)	Brown

One end non-polarized, molded round PVC plug PH-661. Other end outer jacket stripped 3" (76mm). Conductors stripped and twisted 1/2" (12.7mm). For use on 30' cord reel vacuum cleaners.



Part #	Lgth ft (m)	Pkg-Units per Ctn	AWG Stranding	Jacket Color
40339	30 (9.14)	H-25	18 (41 x 34)	Black

Power Cords & Plugs - Cords



Extension Cords - Rubber and Plastic

3 Conductor Plastic - Add-A-Line Plug

NEMA 5-15P pin. One end is Add-A-Line plug PH-745. Other end is non-polarized, molded PVC grounding connector PH-108. Restricted use detachable power supply cord for business, mailing machines and electrical equipment that have a built-in receptacle with blades and grounding pin for cord attachment. These 8' and 15' cords have the added convenience of a NEMA 5-15R receptacle in the plug so you can add a line. Temperature rating is 60°C. Packaging - units per carton are S-10. Color coding is for North American. AWG stranding is 16 (26 x 30). Nominal O.D. is .340 inch (8.64mm). Rating is 1625 watts 13A-125V. Cord type is SJT. Jacket color is black.



Part #	Length ft (m)
17462	8 (2.44)

3 Conductor Rubber - Duplex Connector

NEMA 5-15P pin. One end is molded PVC grounding plug PH-185 or PH 290B. Other end is molded PVC heavy-duty grounding duplex connector PH-117. Temperature rating is 60°C. Packaging - units per carton are S-1. Color coding is for North American. AWG stranding is 16 (26 x 30). Nominal O.D. is .340 inch (8.64mm). Rating is 1625 watts 13A-125V. Cord type is SJO. Jacket color is black.



Part #	Length ft (m)
17475	25 (7.62)

3 Conductor Rubber - Special Use Cords

NEMA 5-15P pin. One end is molded PVC grounding plug PH-290B. Other end is non-polarized, molded PVC grounding connector PH-108. Restricted use detachable power supply cord for business, mailing machines and electrical equipment that have a built-in receptacle with blades and grounding pin for cord attachment. Temperature rating is 60°C. Packaging - units per carton are S-15. Color coding is for North American. AWG stranding is 16 (26 x 30). Nominal O.D. is .340 inch (8.64mm). Rating is 1625 watts 13A-125V. Cord type is SJ. Jacket color is black.



Part #	Length ft (m)
17461	10 (3.05)

Power Nozzle - 2 Conductor - Replacement Cords

Temperature rating is 60°C. Color coding is for North American. AWG stranding is 18 (41 x 34). Nominal O.D. is .243 inch (6.17mm). Rating is 875 watts 7A-125V. Cord type is SVT.

One end is molded PVC pin plug PH-664 and other end is molded PVC connector PH-657.



Part #	Lgth ft (m)	Pkg-Units per Ctn	Jacket Color
40293	22 (.56)	B-50	White

One end is molded PVC pin plug PH-664A and other end is molded PVC pin plug PH-664E.



Part #	Lgth ft (m)	Pkg-Units per Ctn	Jacket Color
40289	17 (.43)	B-25	White

One end molded PVC pin plug PH-664A. Other end jacket stripped 3". Conductors stripped and twisted 1/4" dip soldered.



Part #	Lgth ft (m)	Pkg-Units per Ctn	Jacket Color
40282	58 (1.47)	H-25	White



Power Nozzle - 2 Conductor - Replacement Cords (cont.)

One end molded PVC pin plug PH-664A and other end molded PVC connector PH-66C.



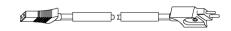
Part #	Lgth ft (m)	Pkg-Units per Ctn	Jacket Color
40283	80 (2.03)	H-25	White

One end is molded PVC pin plug PH-771 and other end is molded PVC connector PH-664C.



Part #	Lgth ft (m)	Pkg-Units per Ctn	Jacket Color
40302	9 (.23)	B-50	White
40303	18 (.46)	B-50	White

One end is molded PVC pin plug PH-714 and other end is molded PVC connector PH-664C. For use on Health-Mor vacuum cleaners.



Part #	Lgth ft (m)	Pkg-Units per Ctn	Jacket Color
40220	28 (.71)	B-50	Brown



3 Conductor Power Supply Cords - Types SJ, SJT, SJO, SV, SVT

Operating temperature is -20°C to 60°C. Voltage rating is 125 volts. Jacket color is black. *Jacket color is gray. Conductor is stranded bare copper. Insulation is color-coded PVC, rubber or neoprene. Jacket is PVC, rubber or neoprene. Specifications include UL Standard 817 and 62, CSA C22.2 No. 21 and 49.

SJ Rubber

AWG is 16. Conductor mm² is 1,31. Conductor strand is 26/30. Conductor mm is 26 x 0,25. Diameter is 0.35 inches (8,9mm). Power rating is 1625 watts and 13 amps. Cord type is SJ.



Part #	Length Ft. - in. (m)
783	9-0 (2,7)
784	12-0 (3,7)

Type SJT PVC, SJ Rubber and SJO Neoprene

AWG is 18. Conductor mm² is 0,81. Conductor strand is 16/30. Conductor mm is 16 x 0,25. Diameter is 0.33 inches (8,4mm). Power rating is 1250 watts and 10 amps.

Part #	Length Ft. -in. (m)	Cord Type
615	6-0 (1,8)	SJ
616	9-0 (2,7)	SJ
778	8-0 (2,4)	SJ
779	8-0 (2,4)*	SJT
780	6-0 (1,8)*	SJT
782	12-0 (3,7)	SJ

Type SV Rubber and SVT PVC

AWG is 18. Conductor mm² is 0,824. Conductor strand is 41/34. Conductor mm is 41 x 0,16. Power rating is 1250 watts and 10 amps.

Part #	Length Ft. - in. (m)	Diameter - in. (mm)	Cord Type
775	6-0 (1,8)	0.26 (6,6)	SV
776	8-0 (2,4)	0.26 (6,6)	SV
777	6-0 (1,8)*	0.25 (6,4)	SVT
787	8-0 (2,4)*	0.25 (6,4)	SVT

Power Cords & Plugs - Cords



3 Conductor Power Supply Cords - Types SJ, SJT, SVT

Applications include business machines, point-of-sale terminals, computers and peripheral equipment, and OEM equipment.

Operating temperature is -20°C to 60°C. Voltage rating is 125 volts. Color code is blue, brown, green/yellow (CEE). *Color code is black, white, green or green/yellow. Jacket colors is black. Conductor is stranded bare copper. Insulation is color-coded PVC, or rubber. Shield (when specified) is aluminum/polyester, foil facing in with tinned copper drain wire. Jacket is PVC, or rubber. Specifications include UL Standard 817 and 62, CSA C22.2 No. 21 and 49.



Part #	Lgth Ft. in. (m)	AWG	Cond. (mm ²)	Cond. (Strand)	Cond. (mm)	Dia. in. (mm)	Watts	Amps
788	9-0 (2,7)	14	2,08	41/30	41 x 0,25	0.38 (9,6)	1875	15
789	15-0 (4,6)	14	2,08	41/30	41 x 0,25	0.38 (9,6)	1875	15
501	6-7 (2)	18	0,82	41/34	41 x 0,16	0.33 (8,3)	1250	10
501B	6-7 (2)	18	0,82	41/34	41 x 0,16	0.33 (8,3)	1250	10
502	9-10 (3)	18	0,82	41/34	41 x 0,16	0.33 (8,3)	1250	10
502B	9-10 (3)	18	0,82	41/34	41 x 0,16	0.33 (8,3)	1250	10
503	6-7 (2)	16	1,31	65/34	65 x 0,16	0.35 (8,9)	1625	13
504	9-10 (3)	16	1,31	65/34	65 x 0,16	0.35 (8,9)	1625	13
505	6-7 (2)	14	2,08	41/30	41 x 0,25	0.38 (9,6)	1875	15
505B	6-7 (2)	14	2,08	41/30	41 x 0,25	0.38 (9,6)	1875	15
506	9-10 (3)	14	2,08	41/30	41 x 0,25	0.38 (9,6)	1875	15
507F	6-7 (2)	18	0,82	41/34	41 x 0,16	0.27 (6,8)	1250	10
508F	9-10 (3)	18	0,82	41/34	41 x 0,16	0.27 (6,8)	1250	10

3 Conductor Electronic Jumper Cords

Cord applications include business machines, point-of-sale terminals, computers and peripheral equipment, and OEM equipment. Operating temperature is -20°C to 60°C. Voltage rating is 125 volts. Color code is blue, brown, green/yellow (CEE). Jacket colors are black, 601B available with white or slate jacket only. Conductor is stranded bare copper. Insulation is color-coded PVC. Shield (when specified) is aluminum/polyester, foil facing in with tinned copper drain wire. Jacket is PVC. Specifications include UL Standard 817 and 62, CSA C22.2 No. 21 and 49.

Parallel Lamp Cords

Part #	Lgth Ft.-in. (m)	AWG	Cond. (mm ²)	Cond. (Strand)	Cond. (mm)	Dia. in. (mm)	Watts	Amps
601B	6-0 (1,8)	18	0,82	41/34	41 x 0,16	0.11 x 0.22 (2,8 x 5,6)	1250	10

Electronic Jumper Cords Shielded

Part #	Lgth Ft.-in. (m)	AWG	Cond. (mm ²)	Cond. (Strand)	Cond. (mm)	Dia. in. (mm)	Watts	Amps
560F	3-3 (1)	18	0,82	41/34	41 x 0,16	0.27 (6,8)	1250	10

Electronic Jumper Cords Unshielded

Part #	Lgth Ft.-in. (m)	AWG	Cond. (mm ²)	Cond. (Strand)	Cond. (mm)	Dia. in. (mm)	Watts	Amps
551	3-3 (1)	18	0,82	41/34	41 x 0,16	0.33 (8,4)	1250	10
552	3-3 (1)	16	1,31	65/34	65 x 0,16	0.35 (9,0)	1625	13

3 Conductor Detachable Power Supply Cord Sets (Types SVT, SJT)

Cord applications include business machines, point-of-sale terminals, computers and peripheral equipment, and OEM equipment. Operating temperature is -20°C to 60°C. Voltage rating is 125 volts. Color code is blue, brown, green/yellow (CEE). *Color code is black, white, green or green/yellow. Jacket color is black. Part number 543 also available in gray. Conductor is stranded bare copper. Insulation is color-coded PVC, or rubber. Shield (when specified) is aluminum/polyester, foil facing in with tinned copper drain wire. Jacket is PVC. Specifications include UL Standard 817 and 62, CSA C22.2 No. 21 and 49.

Shielded - Right Angle Plugs



Part #	Lgth Ft. in. (m)	AWG	Cond. (mm ²)	Cond. (Strand)	Cond. (mm)	Dia. in. (mm)	Watts	Amps
550F	9-10 (3)	18	0,82	41/34	41 x 0,16	0.27 (6,8)	1250	10

Shielded - Straight Plugs



Part #	Lgth Ft. in. (m)	AWG	Cond. (mm ²)	Cond. (Strand)	Cond. (mm)	Dia. in. (mm)	Watts	Amps
531F	6-7 (2)	18	0,82	41/34	41 x 0,16	0.34 (8,6)	1250	10
532F	9-10 (3)	18	0,82	41/34	41 x 0,16	0.34 (8,6)	1250	10
536F	9-10 (3)	14	2,08	41/30	41 x 0,25	0.40 (10,1)	1875	15
547F	6-7 (2)	18	0,82	41/34	41 x 0,16	0.27 (6,8)	1250	10
548F	9-10 (3)	18	0,82	41/34	41 x 0,16	0.27 (6,8)	1250	10

Power Cords & Plugs - Cords



3 Conductor Detachable Power Supply Cord Sets (Types SVT, SJT) (cont.)

Unshielded - Straight Plugs

Part #	Lgth Ft. in. (m)	AWG	Cond. (mm ²)	Cond. (Strand)	Cond. (mm)	Dia. in. (mm)	Watts	Amps
531	6-7 (2)*	18	0,82	41/34	41 x 0,16	0.33 (8,3)	1250	10
531B	6-7 (2)*	18	0,82	41/34	41 x 0,16	0.33 (8,3)	1250	10
532	9-10 (3)*	18	0,82	41/34	41 x 0,16	0.33 (8,3)	1250	10
532B	9-10 (3)*	18	0,82	41/34	41 x 0,16	0.33 (8,3)	1250	10
533	6-7 (2)	16	1,31	65/34	65 x 0,16	0.35 (9,0)	1625	13
534	9-10 (3)*	16	1,31	65/34	65 x 0,16	0.35 (9,0)	1625	13
534B	9-10 (3)*	16	1,31	65/34	65 x 0,16	0.35 (9,0)	1625	13
535	7-7 (2,3)*	18	0,82	41/34	41 x 0,16	0.25 (6,4)	1250	10
535B	7-7 (2,3)*	18	0,82	41/34	41 x 0,16	0.25 (6,4)	1250	10
543	7-6 (2,3)*	18	0,82	41/34	41 x 0,16	0.25 (6,4)	875	7
545	7-6 (2,3)	18	0,82	41/34	41 x 0,16	0.25 (6,4)	1250	10
545B	7-6 (2,3)*	18	0,82	41/34	41 x 0,16	0.25 (6,4)	1250	10
546	7-6 (2,3)	16	1,31	65/34	65 x 0,16	0.35 (9,0)	1625	13

Unshielded - Right Angle Plugs

Cord Type is SJT.

Part #	Lgth Ft. in. (m)	AWG	Cond. (mm ²)	Cond. (Strand)	Cond. (mm)	Dia. in. (mm)	Watts	Amps
537	6-7 (2)	18	0,82	41/34	41 x 0,16	0.33 (8,3)	1250	10
537B	6-7 (2)	18	0,82	41/34	41 x 0,16	0.33 (8,3)	1250	10
538	9-10 (3)	18	0,82	41/34	41 x 0,16	0.33 (8,3)	1250	10
540	9-10 (3)	16	1,31	65/34	65 x 0,16	0.35 (9,0)	1625	13

International Power Supply Cords

Applications are with electronic equipment to be used in Europe and with consumer electronics and appliances. Operating temperature is -15°C to 70°C. Voltage rating is 250. Color code is blue, brown, yellow/green. Jacket color is black. Conductor is stranded bare copper. Insulation is color-coded PVC. Jacket is PVC or neoprene. Available in 25 piece packages.

Unshielded - 2 Conductor



Part #	Lgth Ft.-in. (m)	Approx. AWG	Cond. (mm ²)	Cond. (Strand)	Cond. (mm)	Dia. in. (mm)	Watts	Amps
952	5.5 (1,8)	18	0,75	23/32	23 x 0,20	0.133 x .22	0,40 x 5,60	625

Unshielded - 3 Conductor



Part #	Lgth Ft.-in. (m)	Approx. AWG	Cond. (mm ²)	Cond. (Strand)	Cond. (mm)	Dia. in. (mm)	Watts	Amps
920	8.2 (2,5)	16	1,00	31/32	31 x 32	0.270 (6,80)	2500	10

Universal Power Jumper Cord - Unshielded

Power Jumper Cord applications are to connect accessories and peripherals to computers and electronic test equipment and internationally based on IEC 320 connector system. Voltage rating is 250 volts. Color code is blue, brown, green/yellow. Jacket color is black. Conductor is stranded bare copper. Insulation is color-coded PVC. Jacket is PVC. Available in 25 piece packages.



Part #	Length - Ft. - in. (m)	Approx. AWG	Conductor (mm ²)	Conductor (Strand)	Conductor (mm)	Diameter Nominal - In. (mm)	Power Rating (watts)	Power Rating (amps)
953	8.2 (2, 5)	18	1, 00	56/34	56 x 0, 15	0.314 (8, 0)	2500	10

3 Conductor International Power Supply Cords

Three conductor power supply cord applications are with equipment to be used in Australia, on computer related equipment, and with communication equipment and other electronics. Voltage rating is 250 volts. Color code is blue, brown, green/yellow. Jacket color is black. Conductor is stranded bare copper. Insulation is color-coded PVC. Jacket is PVC. Available in 25 piece packages. Power rating in watts is 2500 and in amps is 10.

Part #	Length - Ft. - in. (m)	Approx. AWG	Conductor (mm ²)	Conductor (Strand)	Conductor (mm)	Diameter Nominal - IN. (mm)
910	8.2 (2,5)	16	1,00	31/32	31 x ,20	.270 (6,80)
911	8.2 (2,5)	16	1,00	31/32	31 x ,20	.270 (6,80)



Power Cords & Plugs - Cords



3 Conductor Electronic Line Cords

Cord applications include business machines, point-of-sale terminals, computers and peripheral equipment, and OEM equipment. Operating temperature is -20°C to 60°C. Voltage rating is 125 volts. Color code is blue, brown, green/yellow (CEE). Jacket color is black. Conductor is stranded bare copper. Insulation is color-coded PVC. Shield (when specified) is aluminum/polyester, foil facing in with tinned copper drain wire. Jacket is PVC. Specifications are UL standard is 817 and 62, CSA C22.2 No. 21 and 49. Available in 25 piece packages.



Shielded - Right Angle Plug

Part #	Lgth Ft.-in. (m)	AWG	Cond. (mm ²)	Cond. (Strand)	Cond. (mm)	Dia. in. (mm)	Watts	Amps
521F	6-7 (2)	14	2,08	41/30	41 x 0,25	0.40 (10,1)	1825	5

Unshielded - Straight Plugs



Part #	Lgth Ft.-in. (m)	AWG	Cond. (mm ²)	Cond. (Strand)	Cond. (mm)	Dia. in. (mm)	Watts	Amps
511	6-7 (2)	18	0,82	41/34	41 x 0,16	0.33 (8,3)	1250	10
512	9-10 (3)	18	0,82	41/34	41 x 0,16	0.33 (8,3)	1250	10
513	6-7 (2)	16	1,31	65/34	35 x 0,16	0.35 (8,9)	1625	13
514	9-10 (3)	16	1,31	65/34	65 x 0,16	0.35 (8,9)	1625	13
523	7-6 (2,3)	18	0,82	41/34	41 x 0,16	0.25 (6,4)	1250	10



3 Conductor Power Supply Cordsets - Medical Grade

Applications include all medical environments where positive ground is critical to reduce shock and sparks; on X-ray, diagnostic and operating equipment; on IV's, blood analyzers, bedside motors and other bio-medical equipment. Operating temperature is -20°C to 60°C. Voltage rating is 125 volts. Conductor is stranded bare copper. Insulation is color-coded PVC. Jacket is PVC. UL standard 62 and 817. CSA C22.2 No. 49 and 21. Passes CSA FT2 flame test. Available in 25 piece packages.

Type SJT PVC Cord

Length 10-0 ft.-in (3,0mm). AWG is 18. Conductor is 1,20mm. Conductor strand is 43/34. Conductor mm is 43 x 0,16. Diameter is 0.31 inches (7,8mm). Power rating is 1250 watts and 10 amps.



Part #	Jacket Color	Plug Color
801	Black	Clear
802	Gray	Gray

Type SJT PVC Cordset

Length 10-0 ft-in (3,0mm).



Part #	AWG	Cond. (mm)	Cond. (Strand)	Dia. in. (mm)	Watts	Amps	Jacket Color
820	18	43 x 0,16	43/34	0.31 (7,8)	1250	10	Black
821	18	43 x 0,16	43/34	0.31 (7,8)	1250	10	Gray
822	18	43 x 0,16	43/34	0.31 (7,8)	1250	10	Gray
830	16	68 x 0,16	68/34	0.33 (8,5)	1625	13	Black
831	16	68 x 0,16	68/34	0.33 (8,5)	1625	13	Gray
832	16	68 x 0,16	68/34	0.33 (8,5)	1625	13	Gray



3 Conductor Extension Cord Sets - Rubber

Applications include business machines, point-of-sale terminals, computers and peripheral equipment, and OEM equipment. Color code is black, white, green. Jacket color is black. Conductor is stranded bare copper. Insulation is color-coded rubber. Jacket is rubber. AWG is 16. Conductor mm² is 1,32. Conductor strand is 26/30. Conductor mm is 26 x 0,25. Diameter is 0.35 inches (8,9mm). Power rating is 1625 watts and 13 amps. Specifications include UL Standard 817 and 62, CSA C22.2 No. 21 and 49. Type SJ rubber.



Part #	Length Ft. - in. (m)
633	10-0 (3,1)
640	15-0 (4,6)



Power Cords

These quality power cords are perfect for powering a PC. Offering a full line of UL and international to choose from.



Part #	Description
PWR-0900-06	Unshielded AC, 6', black
PWR-0900-12	Unshielded AC, 12', black
PWR-1000-03	Shielded AC UL, 3', black
PWR-1000-06	Shielded AC UL, 6', black
PWR-1000-12	Shielded AC UL, 12', black
PWR-1020-06	Shielded AC UL, 6', beige
PWR-1050-06	Right angle, unshielded AC, 6', black
PWR-1050-06S	Right angle, shielded AC, 6', black
PWR-1300-01	AC extension, 1', black
PWR-1300-06	AC extension, 6', black
PWR-1300-12	AC extension, 12', black
PWR-1080-06	Power Cord, Notebook Mickey Mouse w/3 prong connector, 6', Black
PWR-1400-06	Power Cord, Notebook w/Figure 8 Conn., 6', Black

Power Cords & Plugs - Cords



Power Cords (cont.)

Part #	Description
PWR-1200-01	Power Cord, Monitor Adapter, 1', Black
PWR-1200-06	Power Cord, Monitor Adapter, 6', Black
PWR-1100-06	Power Cord, European 220V, 6', Black
PWR-1140-06	Power Cord, Australian, 6', Black
PWR-1150-06	Power Cord, UK, 6', Black
PWR-1420-06	Power Cord, European, Notebook w/Figure 8 Connector, 6', Black
PWR-1450-06	Power Cord, UK, To Notebook (Figure 8)



PC Power Cords

All UL, CSA Listed cables. 60°C 18 AWGx3 conductors. Choice of gray (G) or black (BK). Additional lengths available. After selecting available length, add desired color code. Ordering example: S-EXT-6'BK. Color choice is not applicable to S-PWR/F series.

Part #	Type	Available Footage
S-EXT	Power extension	6, 12
S-PSC	Power cable with stripped end	6, 12
S-PWR	Power to computer	6, 12
S-PWR/F	Monitor to computer	18", 3, 6

Extension Adapter Power Cord

Allows higher density on power strips. UL Listed.



Part #	Description
S-PWR-MFX2-12"	Double Adaptor Power Cord
S-PWR-MF-12"	Single Adaptor Power Cord

AC Power Cord

Most common power cord used on computers, copiers, and other office machines in the U.S. today. Consist of a molded three prong female receptacle on one end and a NEMA 5-15P plug on the other end. UL listed and constructed of 18 AWG cable which is rated at 13A. Molded female receptacle type. 6 feet.



Part # C250

AC Power Extension Cord

For IBM and MAC computers. This cord is widely used for extending a standard computer power cord or hooking a monitor into your computer. They are constructed with a shrouded three-prong male on one end and a molded female receptacle on the other. UL Listed.



Part # 70-254



PC Power Cords and Accessories

Extension Cord

AC 3 conductor (M)/AC 3 conductor (F) 6'



Part # 45-402

Power Cords

These cords are used as replacements for computer, printers, and other small office/home office devices with a current draw of less than 7A @ 125 VAC. Cords are made with 18 AWG stranded UL listed cable and molded ends.



Part #	Description
45-400	Computer power cord, AC (M)/molded (F) 6'
45-403	Computer power extension, shrouded (M)/molded (F) 1'
45-404	Computer power extension, shrouded (M)/molded (F) 6'
45-406	Computer power cord, AC (M)/molded (F) 10'
45-412	Computer power extension, shrouded (M)/molded (F) 12'

Power Cords & Plugs - AC Power



AC Receptacles

Primary power receptacle with 10A, 250V rating for U.S. and European equipment. Grounding, 3 pin type. Right angle housing is designed for printed circuit (P.C.) mounting. Two .136" dia. holes permit fastening to P.C. board, two additional .136" dia. holes allow for fastening to panel or chassis. P.C. pins have 1/8" projection to fit through P.C. board. Ground pin also connects to ground lug on rear of housing. The recessed power receptacle mates with any Volex cord having an IEC 320-C13 connector. May be used for equipment in the U.S., Canada and European countries. *Also approved by Demko, Memko, Semko, Seti, SEV.



Part #	Rating	Approvals
17265	15A-250V, 10A-250V	UL, CSA, VDE*



AC Receptacles (cont.)

The recessed power receptacle mates with any Volex cord having an IEC 320-C13 connector. May be used for equipment in the U.S., Canada and European countries. *Also approved by Demko, Memko, Semko, Seti, SEV.



Part #	Rating	Approvals
17252A	15A-250V, 10A-250V	UL, CSA, VDE*



Power Cords & Plugs - AC Power



AC Receptacles (cont.)

Primary power receptacle with rating for U.S. and European equipment. Grounding, 3-contact type; front mount. Mounts with two #5 or 1/8" dia. rivets (not supplied). The recessed power receptacle mates with any Volex cord having an IEC 320-C14 connector. May be used for equipment in the U.S., Canada and European countries. *Also approved by Semko, SEV.



Part #	Rating	Approvals
17267A	15A-25V, 10A-250V	UL, CSA, VDE*



LEXAN® Lift Lid Weather Resistant Covers



Part #	Color	Fits
7420CRS	Yellow	Single Receptacles
7788CRS	Yellow	50A Receptacles

All-Black (Theatre) Devices

Sleek black surfaces assure you that they'll be out-of-sight, while their rugged industrial-grade construction guarantees that they'll be out-of-mind. Oversized mechanical clamp traps cord against the rear of the housing for exceedingly strong cord grip. Eliminates strain on terminals. Accommodates the widest range of shapes and cord sizes, from up to 10-3SO down to 14 gauge Teflon®. Several design features allow for fast installation, including wire entrance holes that are close together for easy insertion of wire. Terminal screws are provided in the "open" position to eliminate the need to back them out. Terminals have redundant color-coding for added safety. Extra room in the housing allows for convenient wire stripping and easy clamping of cable jacket. Ribbed nylon housing provides excellent impact resistance, while neoprene gaskets keep dirt and dust out of the cable termination areas. The rear ends of the housing are beveled so the connector won't catch on stairs or equipment. Ordering options are individually boxed; bulk packing 50 per carton with assembly screws backed-out, just add suffix ".OEM" to the part number; and ".CN" suffix for combination slot and #1 Robertson Head Screws.



15 Amp Straight Blade Connectors and Plugs

Part #	Type	Amp	Poles/Wires	Voltage	NEMA Configuration
5266BL	Plug	15	2P 3W	125	5-15P
5269BL	Connector	15	2P 3W	125	5-15R

20 and 30 Amp NEMA Locking Connectors and Plugs

Part #	Type	Amp	Poles/Wires	Voltage	NEMA Configuration
205CBL	Connector	20	2P 3W	125	L5-20R
205PBL	Plug	20	2P 3W	125	L5-20P
305CBL	Connector	30	2P 3W	125	L5-30R
305PBL	Plug	30	2P 3W	125	L5-30P

15RA Adapter

Can be used with 30 different standard 15/20A straight blade and 15A locking plugs and connectors to create space-saving right angle configurations. Terminates into 8 different user-friendly positions.



Part # 15RA



20 and 30 AMP Locking Devices

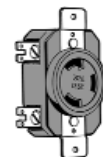
Plugs and Connectors

Rear housing key fits into front portion for ease of assembly. Ribbed housing allows for secure gripping. Thick walled nylon housing resists abuse, corrosion and most chemicals. Cord clamp screws are recessed in housing for neat, clean appearance. "Drive-rivet" style combo head assembly screws for fast assembly. Devices are clearly marked with amperage, voltage, rating and NEMA configuration. UL Listed and CSA Certified for make or break under load. Rear housing is rounded so it won't get caught on stairs, equipment, etc. Dust seal keeps contaminants out of wiring chambers. Powerful mechanical clamp is located inside the housing resulting in a neat, compact design. The clear terminal cover allows visual inspection of the terminal area. To order: Part Number + Color + Packaging + Options. Colors are YL (yellow), (GY) gray, RD (red), BU (blue), WH (white) and GN (green). Packaging is .OEM (50 pieces per pack). Options are .NI (no inserts) and .CN (Robertson Head Screws: available only for 205, 206, 305 and 306 series).

Part #	Type	Amp	Poles/Wires	Voltage	NEMA Configuration
2014C	Connector	20	3P 4W	125/250	L14-20R
2014P	Plug	20	3P 4W	125/250	L14-20P
205C	Connector	20	2P 3W	125	L5-20R
205P	Plug	20	2P 3W	125	L5-20P
206C	Connector	20	2P 3W	250	L6-30R
206P	Plug	20	2P 3W	250	L6-20P
3014C	Connector	30	3P 4W	125/250	L14-30R
3014P	Plug	30	3P 4W	125/250	L14-30P
305C	Connector	30	2P 3W	125	L5-30R
305P	Plug	30	2P 3W	125	L5-30P
306C	Connector	30	2P 3W	250	L6-30R
306P	Plug	30	2P 3W	250	L6-30P

Receptacles

Glass-filled nylon body and face provide excellent impact, heat and chemical resistance. Boss diameter is 1.56" for 20 and 30 amp devices. All brass mounting strap and grounding system provides low resistance ground path and superior corrosion resistance. Terminal combo head screws are clearly marked in accordance with the National Electrical Code. UL Listed and CSA Certified for make or break under load. Sturdy one piece design eliminates the rivet found in conventional contacts. No rivet means less chance for resistance and heat rise. The sturdy design provides greater contact pressure over the life of the device, and is found in all 20 and 30 amp receptacles. The clamp is barbed to hold the conductor in place and cut oxide build-up. The entire terminal is securely held in place by the body of the device. To order: Part Number + Packaging + Options. Packaging is .OEM (50 pieces per pack). Options are .NMS (no mounting screws), .NE (no ears) and .CN (Robertson Head Screws: available only for 205, 206, 305 and 306 series).



Part #	Type	Amp	Poles/Wires	Voltage	NEMA Configuration
2014R	Receptacle	20	3P 4W	125/250	L14-20R
205R	Receptacle	20	2P 3W	125	L5-20R
3014R	Receptacle	30	3P 4W	125/250	L14-30R
305R	Receptacle	30	2P 3W	125	L5-30R
306R	Receptacle	30	2P 3W	250	L6-30R

Power Cords & Plugs - AC Power



15 and 20 Amp Straight Blade

Complete 15A Right Angle Plugs

Ordering options: Individually boxed or bulk packed 50 per carton with assembly screws backed-out, just add suffix ".OEM" to end of part number. Available only in black.



Part #	Poles/Wires	Voltage	NEMA Configuration
5266RA	2P 3W	125	5-15P

Connectors and Plugs

Internal cord clamp provides superior strain relief. Close-in wire entrance holes and generous wiring space make it easy to wire. Two assembly screws, drive rivet style, make for fast assembly. Terminals are open, ready to wire for quickest assembly. Cord clamp insert allows use of greatest range of cord sizes. Beveled housing so it won't get caught on stairs, equipment, etc. Dust seal keeps contaminants out of wiring chamber. Redundant-terminal markings allow for quickest, easiest assembly. All nylon construction for durability. To order: Part Number + Packaging + Option. Packaging is .OEM (50 pieces per pack). Options are .NI (no inserts) and .CN (Robertson Head Screws). Ordering example: 5266.OEM.NI



Part #	Type	Amp	Poles/Wires	Voltage	NEMA Configuration
5266	Plug	15	2P 3W	125	5-15P
5269	Connector	15	2P 3W	125	5-15R
5366	Plug	20	2P 3W	125	5-20P
5369	Connector	20	2P 3W	125	5-20R
5669	Connector	15	2P 3W	250	6-15R
5666	Plug	15	2P 3W	250	6-15R

Receptacles

Heavy duty, extremely durable nylon face. Optional back or side wiring for on-the-job versatility and easy installation. Large #8 captive screws assure easy, efficient installation. Captive self-grounding clip eliminates the need for a bonding jumper (NEC Section 250-74 Exception No. 2). Triple-wipe copper alloy power contacts assure long-life contact pressure. To order: Part Number + Packaging + Options. Packaging is .OEM (50 pieces per pack). Options are .NE (no ears). Ordering example: 5251.OEM.NE



Part #	Type	Amps	Poles/Wires	Voltage	NEMA Configuration
5251	Single receptacle	15	2P 3W	125	5-15R, 5-15P
5252	Duplex receptacle	15	2P 3W	125	5-15R, 5-15P
5351	Single receptacle	20	2P 3W	125	5-20R, 5-20P
5352	Duplex receptacle	20	2P 3W	125	5-20R, 5-20P



Corrosion Resistant Devices

Industrial-grade electrical wiring devices especially designed for long-life in caustic and humid conditions. Features 304 stainless steel fasteners and nickel-plated electrical contacts. Virtually eliminates damage due to oxidation. CRS connectors have all-nylon housing for superior durability and UV/chemical resistance. The bright yellow connectors are highly visible, even in dirty environments. Ordering options - individually boxed; bulk packing 50 per carton with assembly screws backed-out.



15 Amp Straight Blade

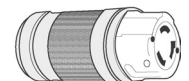
Part #	Type	Amp	Poles/Wires	Voltage	NEMA Configuration
5266CRS	Plug	15	2P 3W	125	5-15P
5269CRS	Connector	15	2P 3W	125	5-15R
5296CRS	Connector	15	2P 3W	125	5-15R
5262CRS	Receptacle	15/20	2P 3W	125	5-20R

20 and 30 Amp NEMA Locking Devices



Part #	Type	Amp	Poles/Wires	Voltage	NEMA Configuration
205CCRS	Connector	20	2P 3W	125	L5-20R, L5-20P
205PCRS	Plug	20	2P 3W	125	L5-20R, L5-20P
205RCRS	Receptacle	20	2P 3W	125	L5-20R, L5-20P
305CCRS	Connector	30	2P 3W	125	L5-20R, L5-20P
305PCRS	Plug	30	2P 3W	125	L5-20R, L5-20P
305RCRS	Receptacle	30	2P 3W	125	L5-20R, L5-20P

50 Amp Devices



Part #	Type	Amp	Poles/Wires	Voltage	NEMA Configuration
6360CRNS	Connector	50	2P 3W	125	SS-1
6361CRNS	Plug	50	2P 3W	125	SS-1
6370CRS	Receptacle	50	2P 3W	125	SS-1
6377CRS	Flanged inlet	50	2P 3W	125	SS-1

IEC320 Specification-Grade Connectors

Rugged connectors for industrial computers, servers, peripherals, utility vehicles, stage lighting, broadcast sound and video. Built to the international standard for appliance couplers: IEC publication 60320. The rugged, re-wireable connectors can be used to supply power to a wide range of electronic equipment. Uses exclusive Perma-Lock™ terminals which have collar-lug overleaves that "lock up" as the contact tangs tighten down on the wires, virtually eliminating the need to ever retighten the terminals. Cord clamp insert allows the widest variety of cable sizes (up to 12 gauge) and types. Its superior clamping power and strain-relief design makes it much less likely that the cord will ever be separated from the connector. Amperage is 15. Poles/Wires is 2P 3W. Voltage is 120. Rated for service @ 120°C.

Part # 320IEC15

Power Cords & Plugs - AC Power



15 Amp Locking Devices

Beveled housing does not snag like square-edged plugs and connectors with exposed cord clamps. Dust seal keeps foreign material away from wire terminals. Internal cord clamp protected and cannot be broken, snagged or accidentally loosened. Cord clamp insert allows the widest variety of cable sizes (accepts up to 10-3SO) and types, including flat, small diameter and special jackets. Redundant color coded terminal markings for added safety when wiring. Terminal screws in open position for faster wire termination - screws don't have to be backed out prior to insertion of wire. Wide entrance holes close together for faster wire termination and easy wire insertion. Generous wiring space. Two assembly screws (speed style) for the fastest assembly of plug and connectors possible. Dielectric withstand voltage is 3000V. Heat rise is maximum 30°C after 100 cycles at 150% of rated current. Black rear housing is standard. Current interrupting.

Plugs and Connectors

U.L. Listed File E57672, C.S.A. Certified File LR81290. Cord accommodation is .300" - .655". Terminal accommodation is #18-10. Front and rear housing is nylon-tough and resistant to a wide range of chemicals. U.L. listed for 125°C continuous use. U.L. 94V-2 flammability index. Cord clamp is nylon. Terminals and contacts - Perma-Lock™ lug-type terminals provide superior wire holding. Terminal screws are #8 solid brass for excellent conductivity. Combo head is #2 Phillips and Slot or #1 Robertson and Slot. Terminal cover is clear polycarbonate. To order: Part Number + Color + Packaging + Options. Colors are YL (yellow), GY (gray), RD (red), GN (green), BU (blue) and WH (white). Packaging is .OEM (50 pieces per pack). Options are .NI (no inserts) or .CN (Robertson Head Screws). Ordering example: 4720YL.OEM.NI



Part #	Type	Poles/Wires	Voltage	NEMA Configuration
4720	Plug	2P 3W	125	L5-15P
4729	Connector	2P 3W	125	L5-15R

Complete 15A Right Angle Plug

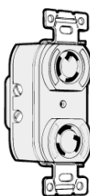
Ordering options: Individually boxed or bulk packed 50 per carton with assembly screws backed-out, just add suffix ".OEM" to end of part number. Available only in black.



Part #	Poles/Wires	Voltage	NEMA Configuration
4720RA	2P 3W	125	L5-15P

Receptacles

U.L. Listed File E111198, C.S.A. Certified File LR81290. Face and housing are glass-filled nylon-tough and resistant to a wide range of chemicals. U.L. Listed for 130°C continuous use. U.L. 94V-O Flammability Index. Meets Fed Spec WC-596F. Mounting straps, rivets and grounding strip are solid brass. Terminal clamps and screws are #8 solid brass for excellent conductivity. Terminals and contacts are clamp-type terminals to provide superior wire holding. Rivetless, one-piece, copper alloy double wipe contacts to eliminate joint resistance. To order: Part Number + Packaging + Options. Packaging is .OEM (50 pieces per pack). Options are .NE (no ears). Ordering example: 4710.OEM.NE



Part #	Type	Poles/Wires	Voltage	NEMA Configuration
4700	Duplex receptacle	2P 3W	125	L5-15R
4710	Single receptacle	2P 3W	125	L5-15R

Hospital Grade Devices

Impact-resistance thermoplastic nylon cover and body. Large, triple-wipe, brass "T" contacts for superior contact pressure and outstanding conductivity. Deep-cut, mil-slotted No. 8-32 high performance brass terminal screws with undercut annular binder head design to reduce oxidation on conductors. Designed torque capability of +20 inch pounds. Dual ground connections are integral green grounding screw and brass nickel-plated self-grounding clip, riveted to the one-piece, locked-in brass strap for automatic ground connection when mounted in a



Hospital Grade Devices (cont.)

properly-grounded metal wall box. Back and side wiring options, with eight deep-funnel back-wiring holes that accept No. 10-14 AWG solid and stranded wire. Receptacles are U.L. Listed File E111198 C.S.A. Certified File LR81290. Plugs and connectors are U.L. File E57672 C.S.A. Certified File LR81290. Cord accommodation for plugs and connectors are .300" - .655". Terminal accommodation is #18-10 and plugs and connectors are #18-10. 2 poles 3 wires. 125 and 250 volts.



15 & 20 AMP Straight Blade

Part #	Single Recept.	Plug (Trans.)	Plug (Black)	Connector (Trans.)	Connector (Black)	NEMA Config.
8200	8210	8215T	8215	8219T	8219	5-15R, 5-15P
8600	-	8615T	-	8619T	-	6-15R, 6-15P
8400	-	8415T	-	8419T	-	6-20R, 6-20P
8300	8310	8315T	8315	8319T	8319	5-20R, 5-20P

Complete 15A Right Angle Plugs

Part #	Amperage	Poles/Wires	Voltage	NEMA Config.
8215TRA	15	2P 3W	125	5-15P

Weather Resistant Covers

Part #	Description
6017	15 amp plug cover
6018	15 amp connector cover



AC Power Cord Sets

AC power cord sets for OEM and replacements. SPT cord sets are typically used in light duty applications, such as table radios, household lamps, etc. SPT cords are two conductor, 18 gauge. SJT cord sets are three conductor, counting the ground wire and regarded as hard service cord sets, frequently used with bench tools such as grinders, saws, etc. SJT cord sets are supplied with a standard NEMA 5-15P power plug. Both of these series are of fully molded construction, the plug and cord are permanently connected.



Part #	UL Wire Type	Wire Gauge	Length (ft.)	Color	Amps
SJT143-6	SJT	14 x 3	6	Black	15
SJT163-6	SJT	16 x 3	6	Black	13

AC Connectors

Dead Front Grounding Cap

UL and CSA approved. This three-prong AC plug can take wires up to #12. Removable insert used for thinner wire. Steel armor clad. New dead front design completely encloses the housing, eliminating need for insulator and insuring against accidental short circuit.



Part # 8515P

Power Cords & Plugs - AC Power



AC Connectors (cont.)

Office Equipment Female AC Converter

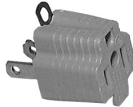
Three prong female power cord connector used on nearly all personal computers, printers, copy machines and other office equipment. Rated 10 amps @ 250V AC.



Part # 8522

Parallel Grounding Adapter

Convert three-prong to two-prong caps. Polarized blades and rigid grounding lug. Compact design extends only 1" from socket.



Part # 8419



AC Connectors (cont.)

Rubber AC 3 Wire Plug

For .225"- .600" cord rubber plugs and female receptacles resist chemical and petroleum by-products. Have low temperature flexibility and resist high heat.



Part # 8520

Vinyl Cube Tap

Heavy-duty, durable brown cube tap. One-piece construction. Brass spring prongs. Rated 15A- 125V.



Part # 8400

Power Cords & Plugs - DC Power



ConnectPro™

Features unique locking blades for maximum surface contact and electrical conductivity. The superior conductivity eliminates problems that rob power from connected electrical devices and reduce battery life. The large contact area reduces the temperature of the devices, allowing them to handle DC currents of up to 30 amps, which would cause conventional designs to fail. Weather resistant and suitable for a variety of on and off-road vehicles used for construction, farming, industrial or utility applications. Receptacle fits into standard 1 1/2" diameter mounting hole and accepts 2- or 3-wire configurations, up to 8 gauge, for 12, 24, 12/24, 24/36, 36 or 48 volt systems. Ergonomic, soft-contoured grip allows easy hook-up and blade alignment. An O-ring seals out moisture while plugged into receptacle. The receptacle is easy to install using the supplied mounting plate for front panel installation, or an optional locking-ring for rear access installation. No special tools are required for installation.



Part #	Type	Amps	DC Voltages
12VBP	Plug	30	12, 24, 36, 48
12VBR	Receptacle	30	12, 24, 36, 48

Corrosion Resistant Deluxe 12 Volt Receptacle and Plug

Manufactured from corrosion resistant marine grade materials. Unique interconnecting system that securely locks the plug into the receptacle resulting in a positive and moisture proof connection. 15-amp rated; 10-amp fused. Optimized metal connection points for maximum conductivity.

12 Volt Receptacle

Watertight sealing cap. Easy to install; use supplied mounting plate for front panel installation, or locking ring for rear access installation.



Part # 12VRC

12 Volt Plug

Moisture proof sealing ring. LED power indicator light. Interchangeable fuse. Internal strain relief and cord seal.



Part # 12VPG



Specification-Grade 10' 12V Extension Cord

Ten feet of super flexible cable. Receptacle is fully-enclosed in soft PVC with a watertight sealing cap. Plug features an LED indicator light, moisture-proof sealing ring, strain relief and built-in 10A fuse. Exclusive Marincos locking system locks plug into receptacle, preventing accidental unplugging. Yet both plug and receptacle are compatible with most standard 12V plugs and receptacles. 15A rated, 10A fused.



Part # 12VXT

Specification-Grade Dual Outlet Extension Cord

All of the features of the 12VXT, but with dual outlets, each on its own one foot super flexible coiled cable.



Part # 12VAD

Direct Connect Multi Connection Battery and Busbar Terminals

Marinco makes wiring electronics directly to the battery or busbar safe and easy with no tools needed. Use the Battery Direct Connect to wire electronic instruments directly to the battery maximizing clarity by virtually eliminating interference. Use the Busbar Direct Connect to wire electronic instruments to a busbar. One the quick-connect terminals (included) have been crimped to the electronic devices, no tools are necessary. The Battery Direct Connect terminals attach to the battery wing-nut stud. The Busbar Direct Connect terminals attach to the busbar to add capacity to an otherwise fully loaded busbar. Open the flip lid cover and connect the electronic instruments (up to four on each set of terminals). Then close the cover which automatically snaps tight. Positive is molded in red and negative is molded in black. All on piece, no screws or parts to lose.



Part #	Description
12VBB	Busbar Direct Connect (Multi-connection busbar terminals)
12VTR	Battery Direct Connect (Multi-connection battery terminals)



Power Cords & Plugs - DC Power



Multi-Pin Mobile Connectors

Although these connectors are generically identified as microphone connectors, they are used in a wide variety of applications which require reliable, economical multi-pin connections, particularly for rugged mobile use. The positive screw-on retaining ring, built-in strain relief, reliable contact design, and keyway mating combine to guarantee permanent contact under extremes of shock and vibration.



Part #	Type	No. of Pins
61-602	In-Line Female	2 pins
61-603	In-Line Female	3 pins
61-604	In-Line Female	4 pins
61-605	In-Line Female	5 pins
61-606	In-Line Female	6 pins
61-608	In-Line Female	8 pins
61-622	Male Chassis Socket	2 Pins
61-623	Male Chassis Socket	3 Pins
61-624	Male Chassis Socket	4 pin
61-625	Male Chassis Socket	5 pins
61-626	Male Chassis Socket	6 pins
61-628	Male Chassis Socket	8 pins
61-634	In-Line Male	4 pins
61-635	In-Line Male	5 pins
P602C	Male Chassis Socket	2 pin
P605C	Male Chassis Socket	3 pins
P606C	Male Chassis Socket	4 pins
P612C	Male Chassis Socket	5 pins
P616C	Male Chassis Socket	6 pins
P700	Male Chassis Socket	8 pins
P707	Male Chassis Socket	7 pins
T602C	In-Line Female	2 pin
T609C	In-Line Female	4 pins
T612C	In-Line Female	5 pins
T616C	In-Line Female	6 pins
T700	In-Line Female	8 pins
T707	In-Line Female	7 pins

DC Coaxial Plugs/Jacks

Coaxial Plug Power Cords

Six foot cords molded DC coaxial plug on one end, stripped and tinned on other.



Part #	EIAJ Class	I.D.	O.D.	Molded Plug	Wire Size (AWG)
TC210	-	2.1mm	5.5mm	Right angle	24
TC240	II	1.7mm	4.0mm	Right angle	24
TC250	-	2.5mm	5.5mm	Right angle	24

Coaxial Power Jacks

Behind panel mounting. Two hole mount on 11/16" centers; screws supplied.



Part #	Inside Diameter (Mating Plug)
209	2.1mm
249	2.5mm



DC Coaxial Plugs/Jacks (cont.)

Coaxial Power Plugs



Part #	Diameter (I.D.)	O.D.	Overall Length
202	.043" (1.1mm)	3.5mm	1"
204	.051" (1.3mm)	3.5mm	1"
210	.083" (2.1mm)	5.5mm	1"
210L	.083" (2.1mm)	5.5mm	1 7/16"
250	.098" (2.5mm)	5.5mm	1"
250L	.098" (2.5mm)	5.5mm	1 7/16"

In-Line DC Power Jacks

Solder lug terminals and flexible plastic strain relief. Color is black.



Part #	Voltage	Center Pin (I.D. Mating Plug)	I.D.	Mating Plug
256	-	1.3mm	3.5mm	No. 204
257	-	2.1mm	5.5mm	No. 210
258	-	2.5mm	5.5mm	No. 250
261	DC 3.15V - below	.7mm	2.35mm	No. 235
262	DC 3.16V-6.3V	1.7mm	4.0mm	No. 240
263	DC 6.4V - 10.5V	1.7mm	4.75mm	No. 275

PCB Mount DC Jacks

PCB mounting, side entry jacks. Select needed item based upon the mating plugs inside diameter.



Part #	Voltage	Center Pin (I.D. Mating Plug)	I.D.	Mating Plug
201	-	1.1mm	3.5mm	No. 202
205	DC 3.15V - below	.7mm	2.35mm	No. 235
207	DC 3.16V - 6.3V	1.7mm	4.0mm	No. 240
211	-	1.3mm	3.5mm	No. 204
212	-	2.1mm	5.5mm	No. 210
213	DC 10.6V - 13.5V	3.3mm (1mm center pin)	5.5mm	No. 255
214	DC 13.6V - 18V	4.35mm (1.4mm center pin)	6.5mm	No. 265
215	-	2.5mm	5.5mm	No. 250
220	DC 6.4V- 10.5V	1.7mm	4.75mm	No. 275

3mm Coax Power Plug for video camera battery packs

A coax power plug for video battery packs for Panasonic, RCA etc. O.D. of 6mm (0.242") and I.D. of 3mm (0.118") solder terminals and flexible strain relief.



Part #	Color
208	black

Power Cords & Plugs - DC Power



DC Coaxial Plugs/Jacks (cont.)

DC Power Plug/Jack Adapter

Permits use of a DC power supply with a wide variety of equipment that does not have a compatible connector. Select an adapter with a jack that will mate with your power supply and, on the other end, a plug that will mate with your equipment.

Part #	Diameter	Mating Plug
278	0.7mm x 2.35mm	DC plug No. 257 jack
280	0.7mm x 2.35mm	DC plug No. 258 jack
282	0.7mm x 2.35mm	DC plug No. 501VS jack
284	1.7mm x 4.0mm	DC plug No. 257 jack
286	1.7mm x 4.0mm	DC plug No. 258 jack
288	1.7mm x 4.0mm	DC plug No. 501 VS jack
290	1.7mm x 4.75mm	DC plug No. 257 jack
292	1.7mm x 4.75mm	DC plug No. 258 jack
294	1.7mm x 4.75mm	DC plug No. 501 VS jack

DC Power Plugs

Complies with Electronic Industries Association of Japan (EIAJ) RC-5320 Standards.

Part #	Rated Voltage (DC)	Sizes (O.D. x I.D.)
235	3.15 and below	.7mm x 2.35mm
240	3.16 - 6.3	1.7mm x 4.0mm
255	10.6 - 13.5	3.3mm x 5.5mm; 1mm x center pin
265	13.5 - 18	4.35mm x 6.5mm; 1.4mm x center pin
275	6.4 - 10.5	1.7mm x 4.75mm



DC Coaxial Plugs/Jacks (cont.)

Panel Mount DC Power Jacks (Metal Housing)



Part #	Center Pin (I.D. Mating Plug)	I.D.	Mating Plug	Mounting Hole
321	2.1mm	5.5mm	No. 210	0.437"
325	2.5mm	5.5mm	No. 250	0.437"

Panel Mount DC Power Jacks (Plastic Housing)

Select needed item based upon the inside diameter of your mating coaxial plug. Plastic body, silvered solder lugs.



Part #	Voltage	Center Pin (I.D. Mating Plug)	I.D.	Mating Plug	Mounting Hole
247	-	2.1mm	5.5mm	No. 210	0.50" (front mount)
248	-	2.5mm	5.5mm	No. 250	0.50" (front mount)

