

Section 4: Racks & Cabinets

Sub-Section	Page
Freestanding	134
Wall Mount	141
Rack Shelves, Enclosures, Lockboxes, Etc	144
Rackmount Power Strips & Surge Protection	149
Rack Wire Management	153
Hardware & Misc.	158



Descriptive information herein supplied directly by individual manufacturers. Not responsible for opinion-oriented information or typographical errors. Not all products may be in stock or available to all EDGE members. Price is subject to change without notice. Restrictions may apply. We reserve the right to limit quantities to stock on hand.

Racks & Cabinets - Freestanding



WRK Series 19" Gangable Rack Enclosures

Designed for use when multiple racks need to be joined or when open sides are desirable for easy access to cables and components. Wide design is ideal when mounting equipment that demands space for substantial cable bundles. 2500 lb. weight capacity. 14-gauge steel tops and bottoms, 16-gauge seamless steel sides, and 11-gauge thickness where the rail brackets are welded to the sides. Laser cut 1/8" thick internal braces. Large cable bundles can easily be passed under or over the standard keylocked door with rear plate removed.

**Available without rear door - suffix part number with 'LRD'.



Part #	Type	Racking Height	Overall Height
WRK-24-27	27 1/2" outside depth	42" (24 space)	48 1/8"
WRK-37-27	27 1/2" outside depth	64 3/4" (37 space)	70 7/8"
WRK-40-27	27 1/2" outside depth	70" (40 space)	76 1/8"
WRK-44-27	27 1/2" outside depth **	77" (44 space)	83 1/8"

WRK-SA Series 19" Stand-Alone Rack Enclosures

Select WRK-SA when mounting equipment that demands space for substantial cable bundles. Fully welded construction provides a 2,500 lb weight capacity. 14-gauge steel tops and bottoms, 16-gauge seamless steel sides and 11-gauge thickness where the rail brackets are welded to the sides. Finished in a durable black textured powder coat.

**Available without rear door, suffix part number with 'LRD'.



Part #	32 1/2" Outside Depth	Racking Height	Overall Height
WRK-40SA-27	WRK-40SA-32	70" (40 space)	76 1/8"
WRK-37SA-27	WRK-37SA-32	64 3/4" (37 space)	70 7/8"
WRK-24SA-27	WRK-24SA-32	42" (24 space)	48 1/8"

WRK Series 19" Network Enclosures

Featuring a locking, smoked plexiglass front door finished in either a neutral putty color or black. Inside, 2 pairs of infinitely-adjustable 11-gauge, 10-32 threaded rackrail, with numbered spaces are located front and rear. Removable plates cover a number of cable entry points. Abundant ventilation points are provided. Items standard include removable side panels with handles, a solid locking rear door, removable vented roof panel, and leveling feet. Convenient ganging holes allow racks to be connected in a multi-bay configuration. UL Listed and compliant with all EIA/TIA standards. Accommodates vertical power strips XL (extra-long), L (long) or S (short). Overall height is 83 1/8". Racking height is 77" (44 space).



Part #	Color	Depth
WRK-44-27NK	Black	27 1/2"
WRK-44-27NKP	Putty	27 1/2"
WRK-44-32NK	Black	32 1/2"
WRK-44-32NKP	Putty	32 1/2"

WRK/WRK-SA Additional Rail Kits

Solid 11-gauge, extra-wide face, 10-32 threaded rail facilitates lacing, while generously large openings are provided for passing cable through. All mounting hardware included, sold in pairs. EIA Compliant.



Part #	Description	Type
WRK-RR24	24 space additional rail kit	10-32 threaded
WRK-RR37	37 space additional rail kit	10-32 threaded
WRK-RR40	40 space additional rail kit	10-32 threaded
WRK-RR44	44 space additional rail kit	10-32 threaded

AXS Slide Out System in Steel Host Enclosure

Gain unrestricted access to equipment and cabling. Select an AXS when space-limited environments require equipment bays to be placed up against a wall or back to back. The patented pull-out design is ideal for access to rear equipment connections. Entire bays of equipment can be rolled out for service and installation flexibility. Available with 20" and 26" frame depths. 650 lb. weight capacity with proper weight distribution. Rack frame heights range from 32 to 41 spaces. Telescoping service stand elevates service tracks to bottom of AXS, allowing it to pull out. Host enclosure can be pre-installed on-site while detachable rack frame is integrated with equipment off-site, simplifying installation. Articulating carriers attach to rack frame for effective cable management. Uses long power strips. Each enclosure includes: modified welded cabinet, assembled rack frame, 2 triple hinged cable carriers, internal system base and 2 top restraining leashes.



Part #	Useable Racking Height	Overall Height	Frame Depth	Seismic Rated
MRK-4426AXS	71 3/4" (41 space)	83 1/8"	20"	No
MRK-4026AXS	64 3/4" (37 space)	76 1/8"	20"	No
MRK-3726AXS	59 1/2" (34 space)	70 7/8"	20"	No
MRK-4431AXS-26	71 3/4" (41 space)	83 1/8"	26"	No
MRK-4031AXS-26	64 3/4" (37 space)	76 1/8"	26"	No
MRK-3731AXS-26	59 1/2" (34 space)	70 1/8"	26"	No
MRK-4426AXS-Z4	71 3/4" (41 space)	83 1/8"	20"	Yes
MRK-4026AXS-Z4	64 3/4" (37 space)	6 1/8"	20"	Yes
MRK-3726AXS-Z4	59 1/2" (34 space)	70 7/8"	20"	Yes
WRK-44SA-27AXS	71 3/4" (41 space)	83 1/8"	20"	No
WRK-44SA-32AXS-26	71 3/4" (41 space)	83 1/8"	26"	No
ERK-4425AXS	71 3/4" (41 space)	81 1/8"	20"	No
ERK-3525AXS	56" (32 space)	65 3/8"	20"	No

MRK Series Gangable Rack Enclosures

Designed for use when multiple racks need to be joined, or when open sides are desirable for easy access to cables and components. Slim, space saving design is ideal when floor space is an issue. Fully welded construction provides a 2500 lb. weight capacity. 14-gauge steel tops and bottoms, 16-gauge seamless steel sides, and 11-gauge thickness where the rail brackets are welded to the sides, each model is equipped with laser cut 1/8" thick internal braces made from structural steel. Finished in a durable black textured powder coat. Series 4426, 4431, 4436, 4442, 4042 available without rear door - suffix part number with 'LRD'.



26 1/2" Outside Depth	31 1/2" Outside Depth	36" Outside Depth	42" Outside Depth	Racking Height ¹ (space)	Overall Height ²
MRK-4426	MRK-4431	MRK-4436	MRK4442	77 (44)	83 1/8"
MRK-4026	MRK-4031	MRK-4036	MRK-4042	70 (40)	76 1/8"
MRK-3726	MRK-3731	-	-	64 3/4 (37)	70 7/8"
MRK-2426	MRK-2431	-	-	42 (24)	48 1/8"

MRK Additional Rail Kits

Part #	Description
MV-RR24	24 space additional rail kit
MV-RR37	37 space additional rail kit
MV-RR40	40 space additional rail kit
MV-RR44	44 space additional rail kit

Racks & Cabinets - Freestanding



MRK Series Gangable Rack Enclosures (cont.)

Additional Cage Nut Rackrail

Part #	Description
PROMRK-RR24	24 space
PROMRK-RR37	37 space
PROMRK-RR40	40 space
PROMRK-RR44	44 space

VMRK-54 19" Video Rack Enclosure

Provides 54 spaces of racking height while still maintaining a slim 22" standard width. 14-gauge steel top and bottom, 16-gauge steel sides, and an 11-gauge structural thickness where the rackrail brackets are welded to the sides. Equipped with laser cut 1/8" thick internal braces made from structural steel. Fully welded construction provides a substantial 2500 lb. weight capacity. 1/2", 3/4", 1", and 1 1/2" electrical knockouts and UHF/VHF antenna knockouts. Two pairs of numbered 10-32 threaded "Z-rail" are standard equipment, as is a solid latching rear door. Optional horizontally split side panels.



Part #	Racking Height	Overall Height	Power Strip
VMRK-54	94 1/2" (54 space)	100 5/8"	XL, L, M, S

Additional Z-Rail

54 space additional 10-32 threaded Z-rail pair

Part # VRR-54

DRK Series Cable Management Enclosures

Designed to provide solutions to high-density cable-management challenges. Featuring a 30" wide footprint. Available in 19", 23" and 24" panel widths. Fully welded construction provides a substantial 1000 lb. weight capacity while 14-gauge steel top and bottom, one-piece steel sides, and four front to rear 1/8" thick structural steel internal braces. Includes fully-adjustable front and rear rackrail, a reversible vented rear door, and a standard top which comes with an opening to accept a 10" fan. 100 Rack screws are included.



Enclosures

Racking height - 77" (44 space). OD height - 83 1/2". OD width - 30". Accommodates extra long, long and short vertical power strips. Available less rear door. To order, suffix part number with 'LRD'.

Part #	Panel Width	Rackrail	Useable Depth	OD Depth
DRK19-44-31	19"	10-32 Threaded on EIA standard spacing	24.25"	31 1/2"
DRK19-44-31K	19"	10-32 Threaded on EIA standard spacing	24.25"	31 1/2"
DRK19-44-31PRO	19"	Square hole (cage-nut style) on EIA standard spacing	24.25"	31 1/2"
DRK19-44-36	19"	10-32 Threaded on EIA standard spacing	28.75"	36"
DRK19-44-36PRO	19"	Square hole (cage-nut style) on EIA standard spacing	28.75"	36"
DRK19-44-42	19"	10-32 threaded on EIA standard spacing	34.75"	42"
DRK19-44-42PRO	19"	square hole (cage nut style) on EIA standard spacing	34-3/4"	42"
DRK23-44-31	23"	10-32 Threaded on EIA standard spacing	28.25"	31 1/2"



DRK Series Cable Management Enclosures (cont.)

Accessories

Part #	Description
CBS-DRK-31	Caster base fits 31" deep DRK
CBS-DRK-36	Caster base fits 36" deep DRK
DPVFD-44	Front vented plexy door for DRK racks. Black finish.
DRK19-RR44PRO	Additional cage nut style rackrail for DRK 19" panels with racks. 44 space.

ERK Series 19" Stand-Alone Rack Enclosures

Fully welded construction combined with 16-gauge steel tops, bottoms, and sides, provides a 2500 lb. capacity. Keylocking solid rear door and laser cut 1/8" thick interior braces made from structural steel. Removable rear plates have 1/2", 3/4", 1", and 1 1/2" knockouts and UHF/VHF antenna knockouts. Large cable entry is found in the bottom, while an open top design on 44, 40, and 35 space sizes accepts a variety of options. 27, 21, and 18 space sizes feature a solid top with two laser knockouts that accept 4 1/2" fans. Front 11-gauge, 10-32 threaded rackrails which have numbered rackspace and are fully adjustable. Superior ventilation is provided at front and sides. Finished with a textured black powder coat. UL Listed. Accommodates vertical power strips L (long), M (medium) or S (short). Available without rear door, suffix part number with 'LRD'.



Part #	Outside Depth (Useable)	Racking Height	Overall Height	Power Strip	Price
ERK-1820	20" (18 15/32")	31 1/2" (18 space)	35 5/8"	S	\$45.25
ERK-2120	20" (18 15/32")	36 3/4" (21 space)	40 7/8"	S	\$45.25
ERK-2720	20" (18 15/32")	47 1/2" (27 space)	51 3/8"	M, S	\$98.65
ERK-3520	20" (18 15/32")	61 1/4" (35 space)	65 3/8"	L, M, S	\$78.58
ERK-4020	20" (18 15/32")	70" (40 space)	74 1/8"	L, M, S	\$98.65
ERK-4420	20" (18 15/32")	77" (44 space)	81 1/8"	L, S	\$98.65

ERK Caster Bases

Skirted for aesthetics, each ERK caster base comes with 3" diameter swivel wheels preinstalled. Raises total rack height by 3 3/4".

Part #	Fits
CBS-ERK-20	20" deep ERK series
CBS-ERK-25	25" deep ERK series

ERK Series Rail Kits

11-gauge, 10-32 threaded, sold in pairs. All mounting hardware included.

Part #	Description
ERK-RR18	18 space rear rail kit
ERK-RR21	21 space rear rail kit
ERK-RR27	27 space rear rail kit
ERK-RR35	35 space rear rail kit
ERK-RR40	40 space rear rail kit
ERK-RR44	44 space rear rail kit

Top Rail Option

Ideal for mounting panels or equipment in the top openings of racks, it includes a pair or 11-gauge, 10-32 threaded rackrail, mounting angles, and hardware. Top rail is recessed 1/8" from top or rack when installed. Fits WRK, MRK, VRK and VMRK series. Rack space is 22 3/4" (13 space).



Part # MW-TR



Racks & Cabinets - Freestanding



Desktop Rail Racks

Offered in 8 and 12 space sizes, both models extend upward at a gentle slope. Overall width is 19 1/8", depth is 11 1/2".



Part #	Racking Height	Overall Height
DR-12	21" (12 space)	22 3/4"
DR-8	14" (8 space)	15 3/4"

Universal Cabinet Top Options

All MW Series tops include a 2 rackspace removable service plate allowing cable bundle entry or use of rack panels. The MW-4FT and ERK-4FT feature laser knockouts to accommodate up to 4 or 3 fans respectively.

Part #	Style	Fits Series
MW-10FT	Mounts one 10" fan	WRK, MRK, VRK, VMRK, DRK
MW-4FT	Mounts four 4 1/2" fans (MW-4FT) or three 4 1/2" fans (ERK-4FT)	WRK, MRK, VRK, VMRK, DRK
MW-ST	Solid	WRK, MRK, VRK, VMRK, DRK
MW-VT	Vented	WRK, MRK, VRK, VMRK, DRK

Universal Cabinet Front Doors

Offered in lightly smoked plexiglass, fully vented, and solid configurations. Beveled corners provide a stylistically modern appearance, while hinging either left or right. Black textured powder coat finish. Includes keylock. Fits WRK, MRK, VRK, VMRK, ERK, DWR, SR Series.



Part #	Door Type	No. of Rack Spaces
FD-10	Solid Door	10
FD-12	Solid Door	12
FD-16	Solid Door	16
FD-18	Solid Door	18
FD-21	Solid Door	21
FD-24	Solid Door	24
FD-27	Solid Door	27
FD-35	Solid Door	35
FD-37	Solid Door	37
FD-40	Solid Door	40
FD-44	Solid Door	44
FD-54	Solid Door	54
PFD-10	Plexi Door	10
PFD-12	Plexi Door	12
PFD-16	Plexi Door	16
PFD-18	Plexi Door	18
PFD-21	Plexi Door	21
PFD-24	Plexi Door	24
PFD-27	Plexi Door	27
PFD-35	Plexi Door	35
PFD-37	Plexi Door	37
PFD-40	Solid Door	40
PFD-44	Solid Door	44
PFD-54	Solid Door	54
PVFD-44	Vented plexi door	44
VFD-10	Solid Door	10
VFD-12	Solid Door	12
VFD-16	Solid Door	16
VFD-18	Solid Door	18
VFD-21	Solid Door	21
VFD-24	Solid Door	24
VFD-27	Solid Door	27
VFD-35	Solid Door	35
VFD-37	Solid Door	37
VFD-40	Solid Door	40



Universal Cabinet Front Doors (cont.)

Part #	Door Type	No. of Rack Spaces
VFD-44	Solid Door	44
VFD-54	Solid Door	54

Universal Cabinet Side Panels

SPN series panels fit all WRK, MRK, VRK, VMRK and DRK Series enclosures. These side panels feature stylish beveled corners to match the aesthetics of the enclosure, easily lift on and off, and include an internal locking kit. Black textured powder coat finish. Sold in pairs. Each side panel adds 5/8" to overall width.



Part #	Fits WRK, MRK, VRK, VMRK
SPN-24-267	24 space 26" and 27" deep
SPN-24-312	24 space 31" and 32" deep
SPN-37-267	37 space 26" and 27" deep
SPN-37-312	37 space 31" and 32" deep
SPN-40-267	40 space 26" and 27" deep
SPN-40-312	40 space 31" and 32" deep
SPN-44-267	44 space 26" and 27" deep
SPN-44-312	44 space 31" and 32" deep
SPN-44-36	44 space 36" deep
SPN-54-312	Fits VMRK-54 only (4 pcs.)

19" Steel Relay Racks

Incorporating a self-squaring, self-leveling design which greatly speeds assembly. Racks come threaded 10-32 or 12-24. Channels made from 11-gauge steel to provide extra strength. Top rails accommodate standard cable ladders. Optional cantilever support base adds stability when installing deep equipment. Finished in black powder coat, 50 rack screws are included. Note: When mounting vertical power strips, part number PB-5A (mounting brackets) are required. TIA/EIA compliant.



Part #	Type	Overall Height	Racking Height	Power Strip*
RL10-38	10-32 thread	72"	38 space	L, M, S
RL10-45	10-32 thread	84"	45 space	L, M, S
RL12-45	12-24 thread	84"	45 space	L, M, S

CSB Cantilever Support Base

Measuring 18" deep, the CSB cantilever support base adds stability to any RL Series relay rack. Especially helpful for installations where flush mounted cantilever shelves are used to mount heavy equipment and the center-of-gravity is shifted to the rear of the rack. Black powder coat finish. TIA/EIA compliant.



Part # CSB

Aluminum Relay Rack

Constructed from 3/16" extruded aluminum uprights that are 12/24 threaded front and rear. Heavy duty 1/4" thick aluminum base is 15" deep for stability and includes holes for securing to floor. Heavy duty 1/4" thick aluminum top angle. Aluminum relay racks comes in silver brushed aluminum finish or black powder coat and include 25 rackscrews. Note: When mounting vertical power strips, part number PB-5A (mounting brackets) are required. TIA/EIA compliant.



Part #	Panel Width	Qty	Racking Height	Power Strip*	Finish
RLA19-1245	19"	1	45 space	L, M, S, XS	Silver
RLA19-1245B	19"	1	45 space	L, M, S, XS	Black
RLA23-1245	23"	1	45 space	L, M, S, XS	Silver

Racks & Cabinets - Freestanding



RK/BRK Series 19" Equipment Racks

Constructed with 5/8" furniture-grade MDF board. Assembles easily with a provided allen wrench and driver bit. 11-gauge, 10-32 threaded rackrails come pre-installed. Add a caster kit for instant mobility, or simply use the provided feet for stationary applications. Two sizes offered: Models with 16" depths (available 2-20 spaces high), and 18" depths (available 8-20 spaces high), both with overall width of 20 3/8".



Part #	Racking Height	Depth	Overall Height	Power Strip
BRK12	21" (12 space)	18"	22 1/2"	-
BRK16	28" (16 space)	18"	29 1/2"	-
BRK20	35" (20 space)	18"	36 1/2"	S
BRK8	14" (8 space)	18"	15 1/2"	-
RK12	21" (12 space)	16"	22 1/2"	-
RK16	28" (16 space)	16"	29 1/2"	-
RK2	3 1/2" (2 space)	16"	5"	-
RK20	35" (20 space)	16"	6 1/2"	S
RK4	7" (4 space)	16"	8 1/2"	-
RK8	14" (8 space)	16"	15 1/2"	-
RKW	Wheel kit-2 locking (adds 2 3/4" to height)	-	-	-

SRK 19" Rolling Equipment Rack

Standing 54 1/4" high and measuring 16" deep, the SRK rolling rack houses 16 vertical spaces on the bottom and 12 spaces on its sloped top. Built using 5/8" furniture-grade MDF board finished with a black laminate, each unit includes pre-installed 11-gauge rackrail and casters. Assembly is easy with supplied hardware. Accommodates vertical power strips medium and short. To install power strips, quick-clips must be screwed to sides, or PB-5A (mounting brackets) used on optional rear rackrail.



Part # SRK

OSR Series 19" Sloped Oak Racks

The OSR Series racks feature a gently sloped rack face to facilitate equipment viewing. Utilizing the same attractive 3/4" oak laminate construction found on the OBRK Series, each OSR Series rack additionally features casters to enhance mobility. Factory-installed 11-gauge, 10-32 threaded rackrail is standard. Accommodates vertical power strips M (medium) or S (short). *Will not accommodate power strip with J-box. To install power strips, quick-clips must be screwed to sides or PB-5A (mounting brackets) used on optional rear rackrail. EIA compliant.



Part #	Racking Height	Depth at Top	Depth at Bottom	Overall Hght	Power Strip
OSR16	28" (16 space)	19 1/2"	23"	36 1/2"	-
OSR24	42" (24 space)	19 1/2"	23"	50 1/2"	M*, S

VRK Video Rack Enclosure

Broadcast-standard 22" outside width and a robust 2500 lb. capacity. 14-gauge steel tops and bottoms, 16-gauge seamless steel sides, and an 11-gauge thickness where the rail brackets are welded to the sides. Equipped with laser cut 1/8" thick internal braces made from structural steel. Horizontal lacing bars made from 1/2" square tubing on 7" centers. Two pairs of wide 11-gauge, 10-32 threaded rail with numbered rackspaces. Laser knockouts for a one-gang electrical box. Vented latching rear door is standard, front doors are optional. Durable black textured powder coat. Accommodates vertical power strips XL (extra-long), L (long) or S (short). 77" (44 space) video/rack/horizontal bars. Outside depth (usable) is 31 1/2" (29"). Height is 83 1/8". XL, L, S power strip.



Part # VRK-44-31H

Slim 5 Series 19" Equipment Racks

Built using a patented bolt-together design. As strong as a welded cabinet, each enclosure is equipped with 2 pairs of fixed 11-gauge, 10-32 threaded rackrail front and rear, features heavy-duty 14-gauge (.078) steel top and bottom, as well as 1/2" and 3/4" rear electrical knockouts. Capable of being ganged together with or without an optional cable chase kit, Slim 5 racks are complimented by a number of available options offering added versatility and aesthetic appeal. 19 1/8" overall width. EIA compliant.



Part #	Racking Height	Overall Height	Weight Capacity	Power Strips
5-8	14" (8 space)	17 3/4"	400 lbs.	20"
5-8-26	14" (8 space)	17 3/4"	400 lbs.	26"
5-14	24 1/2" (14 space)	28 1/4"	400 lbs.	20"
5-21	36 3/4" (21 space)	40 1/2"	300 lbs.	20"
5-21-26	36 3/4" (21 space)	40 1/2"	400 lbs.	26"
5-29	50 3/4" (29 space)	54 1/2"	400 lbs.	20"
5-29-26	50 3/4" (29 space)	54 1/2"	400 lbs.	26"
5-37	64 3/4" (37 space)	68 1/2"	400 lbs.	20"
5-37-26	64 3/4" (37 space)	68 1/2"	400 lbs.	26"
5-43	75 1/4" (43 space)	79"	400 lbs.	20"
5-43-26	75 1/4" (43 space)	79"	400 lbs.	26"
5-14-26	24 1/2" (14 space)	28 1/4"	400 lbs.	26"

Doors

Two styles of Slim 5 doors (plexiglass and solid) are offered to suit the needs of any application. Capable of being installed with a right or left swing, all doors are equipped with a cam keylock and an attractive flush pull. A cable chase is required to install these doors in a multi-bay configuration. EIA compliant.



Part #	Door Type	Fits
DO-5-8	Solid	5-8
DO-5-14	Solid	5-14
DO-5-21	Solid	5-21
DO-5-29	Solid	5-29
DO-5-37	Solid	5-37
DO-5-43	Solid	5-43
DOP-5-8	Plexi	5-8
DOP-5-14	Plexi	5-14
DOP-5-21	Plexi	5-21
DOP-5-29	Plexi	5-29
DOP-5-37	Plexi	5-37
DOP-5-43	Plexi	5-43

Racks & Cabinets - Freestanding



Slim 5 Series 19" Equipment Racks (cont.)

Adjustable "Split" Rear Rackrail

Built to facilitate rear hanging of equipment, this Slim 5 option also permits panels to be "mid-mounted". All brackets, rails, and hardware are included. When using this option with ganged enclosures, a cable chase kit is required. Works with steel side panels only, will not accommodate wood side panels. EIA compliant.



Part #	Fits
5AR14	5-14
5AR21	5-21
5AR29	5-29
5AR37	5-37
5AR43	5-43
5AR8	5-8

Removable Steel Side Panels

Vented at top and bottom, the Slim 5 removable side panels are equipped with recessed lift handles and their own internal locking clips. Made from 18-gauge steel and finished in a durable black textured powder coat, each side panel adds 5/8" per side to the cabinet's overall width. Sold in pairs. EIA compliant.



Part #	Fits
SP-5-14	5-14
SP-5-21	5-21
SP-5-29	5-29
SP-5-37	5-37
SP-5-43	5-43
SP-5-8	5-8

Cable Chase Kits

When bolted between racks, each kit provides additional room for wiring and power distribution in multi-bay applications. Each 3 piece kit includes front, rear and top channels, as well as mounting hardware. This option is required when installing doors on multi-bay Slim 5 racks. EIA compliant.

Part #	Fits
5CC14	5-14
5CC21	5-21
5CC29	5-29
5CC37	5-37
5CC43	5-43
5CC8	5-8

Rear Access Pans

Requiring less space than a conventional door, the rear access pans feature a unique no-hinge "tip-out lift-off" design. The bottom features a convenient laser knock-out for cable pass-through, securing keylock included. EIA compliant.

Part #	Fits
RAP14	5-14
RAP21	5-21
RAP29	5-29
RAP37	5-37
RAP43	5-43
RAP8	5-8



Slim 2 Series 19" Sloped Desktop Racks

Fully Assembled Steel Frame with Laminate Sides

Incorporates a sturdy black steel open frame and removable black laminate side panels. Sloping rack face for easy equipment viewing. Can be easily joined with the open sides and bottom allowing quick wire passage. Front and rear 11-gauge, 10-32 threaded rackrail is standard. EIA compliant.



Part #	Racking Hgth	Top Depth	Bottom Depth	Overall Hgth
2-10	17 1/2" (10 space)	14.1"	18"	19 3/8"

KD Black Laminate

Assembles quickly and easily with provided hardware. Constructed from high pressure black melamine. Sloping rack face for easy equipment viewing. Front and rear 11-gauge, 10-32 threaded rackrail is standard. EIA compliant.



Part #	Racking Height	Top Depth	Bottom Depth	Overall Hght
2-10M	17 1/2" (10 space)	14.7"	17.9"	19 5/8"
2-6M	10 1/2" (6 space)	15.9"	17.9"	12 3/4"

OBRK Series Oak Racks

18" deep. Available in 8, 12, 16 and 20 space sizes. Assembles easily with concealed fasteners. Accommodates vertical power strips S (short). To install power strips, quick-clips must be screwed to sides or PB-5A (mounting brackets) used on optional rear rackrail. High quality 3/4" oak-laminate racks.



Part #	Racking Height	Power Strip
OBRK12	21" (12 space)	-
OBRK16	28" (16 space)	-
OBRK20	35" (20 space)	S
OBRK8	14" (8 space)	-

PTRK Series Portable Racks

Smooth-rolling 4" cushion casters and advanced cable management. Equipped with a front pair of infinitely adjustable 10-32 threaded 11-gauge rackrail with numbered rackspaces and smooth laser cut cable openings. Ruggedly welded 16-gauge steel construction and 1/8" thick laser cut corner braces. Robust 500 lb. capacity. Keylocked front and rear doors, spring loaded recessed handles, and a road-worthy black textured powder coat finish are standard. Accommodates vertical power strip S (short). *Will not accommodate power strip with J-Box. EIA compliant.



Part #	Racking Height	Overall Height	Power Strip
PTRK-14	24 1/2" (14 spaces)	33 3/4" (including casters)	-
PTRK-21	36 3/4" (21 spaces)	46" (including casters)	S*

Optional Rear Rackrail

Part #	Description
PTRK-RR14	14 space optional rear rail kit
PTRK-RR21	21 space optional rear rail kit

Racks & Cabinets - Freestanding



High Density Racking System

The new Belden High Density Racking System gives you more real estate plus it restores manageability to your cabling. Moves, adds and changes are truly easy, saving you time and money. Total of 54 new racking system components and accessories. Four vertical manager styles. Each manager is easily modifiable into different configurations, including single-sided high density, double-sided high density, single-sided low density and double-sided high-and-low density. Two symmetrical manager half doors. Retention gates keep cables from popping out of place when doors are opened or removed.

Aluminum Relay Racks

Part #	Description
BHRR194	Aluminum relay rack, 19" WX84" H, #12-24 tapped hole, Black
BHRR234	Aluminum relay rack, 23" WX84" H, #12-24 tapped hole, Black

Single-Sided High Density Vertical Manager

Include (1) vertical manager, (2) 1/2 doors sections, (3) gates, (25) fasteners, (6) strap mounts, (2) retainer bars and mounting hardware.

Part #	Description
BHVH003	High density with doors, 3-5/8" WX84" H, Black
BHVH006	High density with doors, 6" WX84" H, Black
BHVH010	High density with doors, 10" WX84" H, Black
BHVH012	High density with doors, 12" WX84" H, Black

Single-Sided Low Density Vertical Manager

Include (1) vertical manager, (6) strap mounts, (8) gates, (25) fasteners (2) retainer bars and mounting hardware.

Part #	Description
BHVL003	Low density without doors, 3-5/8" WX84" H, Black
BHVL006	Low density without doors, 6" WX84" H, Black
BHVL010	Low density without doors, 10" WX84" H, Black
BHVL012	Low density without doors, 12" WX84" H, Black

Double-Sided High Density Vertical Manager

Include (2) vertical manager, (4) 1/2 doors sections, (6) gates, (50) fasteners, (12) strap mounts, (4) retainer bars and mounting hardware.

Part #	Description
BHVHH03	High density with doors, 3-5/8" WX84" H, Black
BHVHH06	High density with doors, 6" WX84" H, Black
BHVHH10	High density with doors, 10" WX84" H, Black
BHVHH12	High density with doors, 12" WX84" H, Black

High/Low Density Vertical Manager

Include (2) vertical manager, (2) 1/2 doors sections, (11) gates, (50) fasteners, (12) strap mounts, (4) retainer bars and mounting hardware.

Part #	Description
BHVHL03	High/low density combination with front doors, 3 5/8"W x 84" H, Black
BHVHL06	High/low density combination with front doors, 6"W x 84" H, Black
BHVHL10	High/low density combination with front doors, 10"W x 84" H, Black
BHVHL12	High/low density combination with front doors, 12"W x 84"H, Black

Vertical Manager Backcover

Part #	Description
BHBC03X	3-5/8" W, Black
BHBC06X	6" W, Black
BHBC10X	10" W, Black
BHBC12X	12" W, Black

High Density Racking System (cont.)

Vertical Manager Doors (1Pair)

Part #	Description
BHDK03X	3-5/8"W, Black
BHDK06X	6" W, Black
BHDK10X	10" W, Black
BHDK12X	12" W, Black

Horizontal Manager with Cover

Part #	Description
BHH191U	19" WX1U, Black
BHH192U	19" WX2U, Black
BHH193U	19" WX3U, Black
BHH231U	23" WX1U, Black
BHH232U	23" WX2U, Black
BHH233U	23" WX3U, Black

Transition Channel

Part #	Description
BHTT196	Top transition channel, 19" WX6" D, Black
BHTL196	Lower transition channel, 19" WX6" D, Black
BHTD196	Lower transition channel double, 19" WX6" D, Black
BHTR196	Transition tray (rack to rack)

Accessories

Additional accessories (filler panels, patch cords organizers, nylon and Velcro ties) available.

Part #	Description
BHSP020	Slack management spools (2) , Black
BHGL03X	Gate Kit, 3-5/8" W, Black
BHGL06X	Gate Kit, 6" W, Black
BHGL10X	Gate Kit, 10" W, Black
BHGL12X	Gate Kit, 12" W, Black
BHGR03X	Retention gate (6), 3-5/8" W, Black
BHGR06X	Retention gate (6), 6" W, Black
BHGR10X	Retention gate (6), 10" W, Black
BHGR12X	Retention gate (6), 12" W, Black
BHFS11U	Finger section, 11U, Black
BHFB11U	Rack mount finger bracket, 11U, Black
BHDB03X	Divider bar, 3-5/8" W, Black
BHDB06X	Divider bar, 6" W, Black
BHDB10X	Divider bar, 10" W, Black
BHDB12X	Divider bar, 12" W, Black
BHPF100	Fastener for vertical manager (100)
BHSM100	Tie mount for vertical manager (100)



19" Floor Racks

All racks are provided with all assembly hardware and equipment mounting screws. The rails are tapped #12-24 front and rear in EIA compliant spacing. Designed with mounting holes which allow anchoring to the floor. Reinforced angled top brace supports. Meets or exceeds EIA-310D Standards.



Part #	RMS	Height	Load Capacity	Color
FR1903-20-03	20	3'	400 lbs.	Aluminum
FR1904-28-03	28	4'	500 lbs.	Aluminum
FR1907-45-03	45	7'	800 lbs.	Aluminum



Racks & Cabinets - Freestanding



19" Floor Racks (cont.)

Part #	RMS	Height	Load Capacity	Color
FR1904-28-02	28	4'	500 lbs.	Black
FR1907-45-02	45	7'	800 lbs.	Black

Adjustable 4 Post Floor Rack

Cold rolled steel 14 AWG. Reinforced angled top brace supports. Complete with assembly hardware and set of #12-24 equipment screws. Meets or exceeds EIA-310D standards. Double tapped cage nut rails. Adjustable for 24", 28", 32" and 36" depth. Electrostatic microfinish paint. Height is 7'. 45 RU. Black. Width is 21". 1700 lbs load capacity.

Part # FR1924-45-02

400 Series Floor Enclosures - 19" x 24" Size Group

Feature louvered side and rear removable and keyed panels for increased air-flow and ventilation. Comes complete with dual fans, 4 (2 front, 2 rear) adjustable mounting rails tapped with EIA spaced #12-24 threading, casters, leveling feet, ground bus and lockable acrylic front door. Listed in ivory. For black, replace -01 with -02. Overall width is 22.5". Overall depth is 24". Internal depth is 21.5".



Part #	RMS	Overall Height	Internal Height	Load Capacity
FE4019-20-01	20	3'	35"	630 lbs.
FE4019-28-01	28	4'	47"	650 lbs.
FE4019-34-01	34	5'	59.5"	700 lbs.
FE4019-40-01	40	6'	70"	730 lbs.
FE4019-45-01	45	7'	78.75"	830 lbs.

410 Series Floor Enclosures - 19" x 32" Size Group

19" mount floor enclosures are a 32" depth design which allow for deep dimensional mounting requirements. Manufactured to ANSI/EIA RS310-D standards. Feature louvered side and rear removable keyed panels offering easy access to equipment and cabling. Comes complete with dual fans, 4 (2 front, 2 rear) adjustable mounting rails tapped with EIA spaced #12-24 threading, casters, leveling feet, ground bus and lockable acrylic front door. Load capacity is 850 lbs.



Part #	Color	RMS	Overall HxWxD	Internal HxD
FE4119-45-01	Ivory	45	7"x22.5"x32"	78.75"x29.5"
FE4119-45-02	Black	45	7"x22.5"x32"	78.75"x29.5"

Mesh Door Design Floor Server Enclosure - 740 Series 27.5" x 42" Size Group

Mesh front door design for airflow and heat dissipation. Vented on all panels for excellent air circulation characteristics. Top panel features cutouts for fans and cutouts for cable access. Platform features cutouts for cable access. Features 6 fully adjustable internal equipment cage nut rails for #12-24 mounting screws in EIA universal spacing. Comes with front door, rear and side panels, leveling feet, casters, grounding bus bar, 2 pre-installed 80 CFM fans and equipment screws. Electrostatic microfinish paint.



Part #	Height	RU	Color
FE7419-40-01	6'	40 RU	Ivory
FE7419-40-02	6'	40 RU	Black
FE7419-45-01	7'	45 RU	Ivory
FE7419-45-02	7'	45 RU	Black

Mesh Door Design Floor Enclosure - 700 Series 19" x 24" Size Group

Width 22.5" - Depth 24". Mesh front door design for airflow and heat dissipation. Vented on all panels for excellent air circulation characteristics. Top panel features cutouts for fans and cutouts for cable access. Platform features cutouts for cable access. Features 4 fully adjustable internal equipment cage nut rails for #12-24 mounting screws in EIA universal spacing. Reversible front door. Meets or exceeds EIA 310D standards. Electrostatic microfinish paint.

Part #	Height	RU	Color
FE7019-34-01	5'	34 RU	Ivory
FE7019-34-02	5'	34 RU	Black
FE7019-40-01	6'	40 RU	Ivory
FE7019-40-02	6"	40 RU	Black
FE7019-45-01	7'	45 RU	Ivory
FE7019-45-02	7'	45 RU	Black

Outdoor Enclosure - 900 Series

Designed to provide a degree of protection for enclosed equipment against falling dirt, rain, snow, sleet, windblown dust, splashing water, hose-directed water and corrosion. Includes casters for easy mobility. Features fully adjustable internal cage nut rails for #12-24 mounting screws in EIA universal spacing. Leveling feet included. Galvanized steel construction. Meets or exceeds NEMA 250 - protection 4X and EIA 310D. Finished with textured polyester material - highly corrosion resistant.

Part #	RU	Height	Load Capacity
OE9019-20-04	20 RU	3'	580 lbs.
OE9019-28-04	28 RU	4'	650 lbs.
OE9019-34-04	34 RU	5'	700 lbs.
OE9019-40-04	40 RU	6'	730 lbs.
OE9019-45-04	45 RU	7'	780 lbs.



NET-ACCESS™ Cabinet

Combines the aesthetics and security of a cabinet with the accessibility of an open rack. The NET-ACCESS Cabinet provides superior cable pathway accessibility, improved thermal management and a fully integrated, electrically bonded cabinet. The modular design of the cabinet incorporates flexibility for future network/data center expansions resulting in greater network uptime and reliability, easier moves, adds and changes and lowest total cost of ownership.

Part #	Description
CN1	32 x 41 x 84 inches (812.8 x 1041 x 2133.6 mm) WxDxH. Cabinet frame with top panel, Dual hinge perforated front door, Split perforated rear door, Solid side panels, #12-24 threaded equipment mounting rails, 45 RU cable management
CN2	Dimensions: 32"W X 41"D X 84"H (812.8mm x 1041.4mm x 2133.6mm), Cabinet frame with top panel, Dual hinge perforated front door, Split perforated rear door, #12-24 threaded equipment mounting rails, 45 RU cable management
CN4	Dimensions: 31.5"W X 40" D X 84"H (800mm x 1017mm x 2134mm), Cabinet frame with top panel, Split perforated front and rear doors, Solid side panels, #12-24 threaded equipment mounting rails, 45 RU cable management on front and rear of front posts
CNPS	Removable cabinet solid side panel with lockable push button latches
CNBRFK	Cabinet cable management finger kit, 9 RU sections. Kit includes 5 left and 5 right finger sections to complete 45 RU on one side of post. Cable capacity of each RU is 48 Category 6 cables or 24 Category 6A cables
CNSPE	Network cabinet end channel slack spool. Package includes left and right slack spools and mounting brackets
CNSPC	Network cabinet center channel slack spool. Includes one center spool and one mounting bracket
CNSTR	Network cabinet casters - Set of 4
CNAE1	Network cabinet air exhaust duct for high heat density configurations. Designed for Cisco 6509 switch
CNAE2	Network cabinet air exhaust duct for high heat density configurations. Designed for Cisco 9513 switch

Racks & Cabinets - Freestanding



Equipment Racks



Part #	Description	Outside Dim. inches (H x W x D)	Rack Spaces
RR-48	Milled Finish, 10-32 Holes	48 x 30.38 x 3.0	24
RR-48B	Black Finish, 10-32 Holes	48 x 30.38 x 3.0	24
RR-84	Milled Finish, 10-32 Holes	84 x 30.38 x 3.0	45
RR-84B	Black Finish, 10-32 Holes	84 x 20.38 x 3.0	45



19" Mini-Rack

Desktop or wall mountable mini rack. Designed for small LAN installations. 19 in. Wide. 7 in. High (4 U). 12 in. Deep (30 cm). 4U, Grey, 480mm x 300mm x 180mm (19 in. x 12 in. x 7 in.)



Part # 167628

19" Free-Standing Cabinets

Front features a full length smoked and shatterproof glass door reinforced with decorative metal frame. Pop up lock and three point locking mechanism. Mounting brackets allow for flexible configuration and adjustable in depth. Multiple cable entry points on the roof and bottom of frame. Quickly release, locable and removable side doors with slam latches and locks. Powder coat paint finish. Vented top panel. Secure, locking front and back doors with spring loaded hinges for best accessibility. Grounding kit included. Reversible doors. Leveling feet included.



Part #	Description
682266	23.5" Depth - 22U, Black, 24 x 24 x 38.5 in.
683266	23.5" Depth - 32U, Black, 24 x 24 x 56.1 in.
684266	23.5" Depth - 42 U, Black, 24 x 24 x 73.5 in.
684268	31.5" Depth - 42 U, Black, 24 x 30 x 73.5 in.
674768	31.5" Depth - 47 U, Black, 24 x 30 x 82.3 in.

19" Server Cabinets

Front door features a full length smoked and shatterproof glass door, reinforced with decorative metal frame. Pop up lock and three point locking mechanism. Mounting brackets allow for flexible configuration and adjustable depth. Multiple cable entry points on the roof and bottom of frame. Quick release, lockable and removable side doors with slam latches and locks. Powder coat paint finish. Leveling feet included. Vented top panel. Secure, locking front and back doors with spring loaded hinges for best accessibility. Removable doors for connecting cabinets. Reversible doors.

Part #	Description
673661	40" Depth - 36 U, Black, 24 x 39.6 x 61.3 in.
674261	40" Depth - 42 U, Black, 24 x 39.6 x 73.6 in.

19" Open Racks and Mini Rack

2 Post - Single Frame

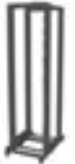
Quick access to equipment. Designed to house 19" standard mounting devices. Modular design makes it easy to assemble and dismantle. Uprights can be used as a cable manager. Powder coat paint finish. Leveling feet included. Rigid, welded frame construction. Sturdy steel construction. Easy mounting, fast assembly.



Part #	Description
673601	36 U (63")
674201	42 U (73.5")
674801	48 U (84")

4 Post - Double Frame

Use as single frame or double frame. Four point mounting accessories available. 42 U (73.5").



Part # 674200

10" Wall Mount SOHO Cabinet

Pre-assembled. Front door features a full length smoked and shatterproof glass door reinforced with decorative metal frame. Two 10" adjustable mounting brackets. Multiple cable entry points on roof and bottom of frames. Easily re-mountable. Powder coat paint finish. Load carrying capacity: 35 lbs. Vented top panel. Rear panel can be used as a mounting plate. Sturdy steel construction. Black. Can be used as free standing. 11" High x 11" Deep.



Part # 671006

Racks & Cabinets - Wall Mount



WRP/WRS Series Low-Profile Wall Cabinets

Wall-mounting deep routers and hubs. Unique design with 23" useable racking depth allows mounting of deeper equipment vertically in a parallel-to-the-wall orientation for space efficiency and aesthetics. Solid hinged body swings either left or right. Angled, hinged plexiglass (WRP Series) or solid steel (WRS Series) top cover allows convenient equipment access. Top cover keyed separately from body key-lock, providing user access to equipment controls while limiting access to rear equipment connections. Finished in durable putty powder coat (WRP Series) or black textured powder coat (WRS Series). Weight capacity is 150 lbs.



Putty Part #	Black Part #	Racking Height
WRP-4	WRS-4	7" (4 space)
WRP-6	WRS-6	10 1/2" (6 space)
WRP-8	WRS-8	14" (8 space)



EWR Series Wall Mount Rack

Use when installing smaller systems and an economical solution is required. Tool-Free Quick-Mount™ system for easy one-person mounting of the center section to the backpan on the jobsite. Welded construction provides 150 lb. weight capacity. Models available with solid locking front door (add SD to end of part number). Finished in a durable black textured powder coat. Reversible pad-lockable center section keyed separately from optional front door.



Part #	Depth	Racking Height	Overall Height
EWR-8-17	17" deep (15" useable)	14" (8 space)	21"
EWR-8-22	22" deep (20" useable)	14" (8 space)	21"
EWR-10-17	17" deep (15" useable)	17 1/2" (10 space)	24 1/2"



Racks & Cabinets - Wall Mount



EWR Series Wall Mount Rack (Cont.)

Part #	Depth	Racking Height	Overall Height
EWR-10-22	22" deep (20" useable)	17 1/2" (10 space)	24 1/2"
EWR-12-17	17" deep (15" useable)	21" (12 space)	28"
EWR-12-22	22" deep (20" useable)	21" (12 space)	28"
EWR-16-17	17" deep (15" useable)	28" (16 space)	35"
EWR-16-22	22" deep (20" useable)	28" (16 space)	35"

Horizontal Distribution Rack

Provides 4 racking spaces of equipment mounting in two sections while protruding only 7 1/2" from the wall. Mount patch panels on an upper set of 2 space rackrail that pivots 90° with a positive stop to simplify wire connections. Mount switches, hubs, and routers (up to 18" deep) on a lower set of 2 space rackrail (total depth 21 1/2") that pivots for access to rear connection points. Reversible hinged door with lock and latch, grounding stud, and integral electrical box for power distribution. Features cable pass-through on the backpan, abundant cable tie points, knockouts on the top, bottom and sides for electrical connections, and integral lacing bar on top set of rackrail. Includes a 24" length of hook and loop fasteners for cable management. Constructed of 16-gauge steel and feature 11-gauge, 10-32 threaded rackrail. Finished in a durable putty powder coat. Racking height is 3 1/2" + 3 1/2" (2 space + 2 space). EIA/TIA compliant. UL Listed.



Part # HDR-4

Versa-Rack

Mount hubs and other network components flat against the wall with our innovative all-steel sideways panel mounts. Can also be used to mount components under tables and desks for commercial and classroom use. Each model features a single pair of high quality 11-gauge, 10-32 threaded rackrail that can be positioned in 3 locations to accommodate D-ring cable managers. The low-profile sideways panel mount is equipped with cable lacing points at the rear and includes a steel cover to protect and conceal equipment. Includes rack screws. TIA/EIA compliant.



Part #	Dimensions (W x H x D)
SPM-2	19" x 3.5" x 19"
SPM-4	19" x 7" x 19"

Swing Frame Rack

Perfect solution for mounting patch panels, routers, hubs and switches. Simplifies wiring tasks by opening a full 90° with a positive stop to facilitate punch-downs. Features cable pass-throughs and tie points for ease of cable management. Fully reversible open frame design provides a 18" depth, 100 lb. weight capacity and provides the greatest strength in its class. Constructed of 14-gauge steel with 11-gauge steel rackrail and finished in a durable black textured powder coat. TIA/EIA compliant.



Part #	Dimensions (W x H x D)
SFR-12-18	19" x 21" x 18"
SFR-20-18	19" x 35" x 18"

DWR Series Sectional Wall Racks

Equipped with a locking pivoting center section, fully-adjustable 11-gauge, 10-32 threaded front rackrail and a large laser knockout in the rear which provides smooth cable entry. Comes with a locking smoked plexiglass front door. Two laser knockouts on top and bottom of cabinet allow for optional fan units. Pivoting design (non-hinged) provides weight capacities of 150, 200 and 300 lbs. Features an advanced cable management system residing in the center and rear sections. Solid or vented doors can be ordered as an option. Cabinet can be ordered less the front door by simply removing the suffix "PD" from the part number. *Accommodates vertical power strips L (long), M (medium) and S (short). When mounting vertical power strips in DWR wall racks, part number PB-DWR is required. UL Listed.



Part #	Depth	Racking Height	Weight Capacity	Overall Height	Power Strip*
DWR-10-17PD	17" deep (15" useable)	17 1/2" (10 space)	150 lbs.	24 9/16"	-
DWR-10-22PD	22" deep (20" useable)	17 1/2" (10 space)	150 lbs.	24 9/16"	-
DWR-16-17PD	17" deep (15" useable)	28" (16 space)	150 lbs.	35 1/16"	-
DWR-16-22PD	22" deep (20" useable)	28" (16 space)	150 lbs.	35 1/16"	-
DWR-21-17PD	17" deep (15" useable)	36 3/4" (21 space)	200 lbs.	43 13/16"	S
DWR-21-22PD	22" deep (20" useable)	36 3/4" (21 space)	200 lbs.	43 13/16"	S
DWR-24-17PD	17" deep (15" useable)	42" (24 space)	300 lbs.	49 1/16"	S
DWR-24-22PD	22" deep (20" useable)	42" (24 space)	300 lbs.	49 1/16"	S
DWR-35-22PD	22" deep (20" useable)	61 1/4" (35 space)	300 lbs.	68 5/16"	L, M, S

DWR Rear Rail Kits

11-gauge, 10-32 threaded, sold in parts. All mounting hardware included. EIA compliant.

Part #	Description
DWR-RR10	10 space rear rail kit
DWR-RR12	12 space rear rail kit
DWR-RR16	16 space rear rail kit
DWR-RR18	18 space rear rail kit
DWR-RR21	21 space rear rail kit
DWR-RR24	24 space rear rail kit
DWR-RR35	35 space rear rail kit
DWR-RR40	40 space additional rail kit

Wall-Mount Relay Racks

A self squaring rack for mounting virtually any data or telecommunications component, the wall-mount relay rack is quick and easy to assemble. An effective method of wall mounting fiber-optic equipment as its fixed design prevents kinking or breaking of glass fibers. Rugged steel construction features 11-gauge, 10-32 threaded rackrail and a black textured powder coat finish. Includes rack screws. TIA/EIA compliant.



Part #	Dimensions (W x H x D)
WM-15-12	19" x 26" x 12"
WM-15-18	19" x 26" x 18"
WM-30-12	19" x 52" x 12"

Racks & Cabinets - Wall Mount



Wall-Mount Relay Racks (cont.)

Part #	Dimensions (W x H x D)
WM-30-18	19" x 52" x 18"
WM-8-12	19" x 14" x 12"
WM-8-18	19" x 14" x 18"

SBX Series 19" Wall Mount Rack

The fully welded construction utilizes 18-gauge steel, incorporates a locking front door which swings open a full 180° on a virtually indestructible hinge, and includes a removable backpan for simple installation and easy access to connections. Ventilation slots at the top of each side provide superior cooling, while a deep rail-to-door clearance ratio provides flexibility not found in flush-mount door designs. Additional features include 11-gauge threaded 10-32 rackrails, 1/2" and 3/4" electrical knockouts at top, bottom, and rear, and a black textured powder coat finish. EIA compliant.



Part #	Racking Height	Useable Depth	Weight Capacity
SBX-10	17 1/2" (10 space)	14"	100 lbs.
SBX-7	12 1/4" (7 space)	14"	75 lbs.

AXS System for Millwork and In-Wall

Use when installing audio and video equipment flush into a wall or cabinet. The patented out-to-AXS design is ideal for access to rear equipment connections. New rotating version: AX-SXR-xx. Up to a 650 lb. weight capacity with proper weight distribution (AX-SXR-xx weight capacity is 450 lbs.). Rack frame heights range from 10 or 15 spaces to 43 spaces. Available with 26", 20" and 16 1/2" frame depths. Unique mechanically interlocking corner joint provides exceptional strength and eases assembly. Telescoping service stand elevates service tracks to bottom of AXS, allowing it to pull out. Articulating cable carriers attach to rack frame for effective cable management. Service tracks include built-in level to reduce installation and servicing time.



Part #	No. Useable Spaces	Extension Length	Frame Depth
AX-SX	10 to 43	25"	20"
AXS-xx-26	15 to 43 (replace xx)	48"	26"
SAX	15 to 43	48"	16"
SSAX	10 to 43	25"	16"
AX-S	15 to 43	48"	20"

SR Series Pivoting Rack

While mounting to the wall, the rack's entire weight is actually safely supported by the floor. The unit's 8 3/4" bottom cable-entry platform bears the weight of the rack while a low-friction wear-strip facilitates easy opening. Including all of the attributes of the DWR Series sectional wall racks, this series provides 40 rackspace. Each unit includes a padlockable draw latch plus keylock in its center section, and 1/8" thick laser-cut corner braces. Front vents provide cooling. Top of the rack can accommodate up to (2) 4 1/2" fans. A large laser knockout in the backpan provides an easily removed pull-box sized opening for cable passage. Abundant tie points are provided for quick cable lacing. Finished in a durable black textured powder coat. UL Listed. Weight capacity is 500 lbs.



Part #	Racking Hght	Useable Depth	Overall Depth	Overall Hght
SR-24-28	42" (24 space)	26"	28"	62 3/4"
SR-24-32	42" (24 space)	30"	32"	62 3/4"
SR-40-22	70" (40 space)	20"	22"	90 3/4"
SR-40-28	70" (40 space)	26"	28"	90 3/4"
SR-40-32	70" (40 space)	30"	32"	90 3/4"
SR-46-28	80 1/2" (46 space)	26"	28"	101 1/4"

Compact 100 Series Wall Mount Enclosures

Made from 1-piece construction, an economical solution to 19" wall-mount equipment. Vented front, rear and top panels. Top and rear panels feature cutouts for cable access and ventilation fan. Designed with internal mounting rails tapped for #12-24 mounting screws in accordance with EIA standards. Comes complete with equipment mounting screws. Front door is reversible for left or right side opening. Key lock pre-mounted on door. Meets or exceeds EIA-310D Standards. Color is ivory. For black, replace -01 with -02.



Part #	RMS	Height	Width	Depth	Load Capacity
WM1019-05-01	5	11"	20.5"	20"	30 lbs.
WM1019-07-01	7	15"	20.5"	20"	50 lbs.
WM1019-09-01	9	18"	20.5"	20"	70 lbs.
WM1019-11-01	11	22"	20.5"	20"	90 lbs.

Compact 200 Series Wall Mount Enclosures

Feature removable side panels for easy access to equipment and wiring and are key-locked for secure access. Vented front, rear, side and top panels. Top and rear panels feature cutouts for cable access and top panel ventilation fan cutout. Designed with internal mounting rails tapped for #12-24 mounting screws in accordance with EIA Standards. Comes complete with equipment mounting screws. Front door is reversible for left or right side opening. Color is ivory. For black, replace -01 with -02.



Part #	RMS	Height	Width	Depth	Load Capacity
WM2019-05-01	5	11"	20.5"	20"	30 lbs.
WM2019-07-01	7	15"	20.5"	20"	50 lbs.
WM2019-09-01	9	18"	20.5"	20"	70 lbs.
WM2019-11-01	11	22"	20.5"	20"	90 lbs.
WM2019-14-01	14	26"	20.5"	20"	120 lbs.
WM2019-16-01	16	31"	20.5"	20"	130 lbs.

Compact 300 Series Wall Mount Enclosures

Feature a swing-out design which provides access to component rear panels. The rear support mounting section is made with 16 AWG steel which permits cabinet to be opened without sagging, even fully loaded. #12-24 tapped internal mounting rails are included. For 19" rack-mount equipment. Vented front, rear, side and top panels. Meets or exceeds EIA-310D Standards. Listed color is ivory. For black, replace -01 with -02.



Part #	RMS	Height	Width	Depth	Load Capacity
WM3019-07-01	7	15"	20.5"	20"	30 lbs.
WM3019-09-01	9	18"	20.5"	20"	50 lbs.
WM3019-11-01	11	22"	20.5"	20"	60 lbs.
WM3019-14-01	14	26"	20.5"	20"	75 lbs.

E-Z Compact 600 Series Wall Mount Enclosures

Enclosures are packaged broken down in an easy to carry space saving carry box allowing for transporting in small vehicles and warehousing in a fraction of the space as a fully assembled enclosure. For 19" rack-mount equipment. Vented front and top panels. Top and bottom panels feature cutouts for cable access and ventilation fan. Designed for internal mounting rails tapped for #12-24 mounting screws in compliance with EIA standards. Listed color is ivory. For black, replace -01 with -02.



Part #	RMS	Height	Width	Depth	Load Capacity
EZ19-07-01	7	15"	20.5"	20"	45 lbs.
EZ19-09-01	9	18"	20.5"	20"	65 lbs.
EZ19-11-01	11	22"	20.5"	20"	85 lbs.



Racks & Cabinets - Wall Mount



19" Wall Mount Brackets

Provides simple and efficient mounting of rack mount components to walls or open frame racks. Available in both non-hinged and hinged designs. Hinged designs for easy access to the rear of components and non-hinged designs for more competitive solutions. Made of 16 AWG steel with EIA spaced threaded mounting holes. In black powder coat finish.



Part #	RMA	Height	Depth	Hinged
WB19-0106H	1	1.75"	6"	Yes
WB19-0206H	2	3.5"	6"	Yes
WB19-0406H	4	7"	6"	Yes
WB19-0606H	6	10.5"	6"	Yes
WB19-0412H	4	7"	12"	Yes
WB19-0612H	6	10.5"	12"	Yes
WB19-0412N	4	7"	12"	No
WB19-0612N	6	10.5"	12"	No

Wall Mount Open Frame Racks

These provide the capability of mounting rack-mount equipment when floor mounting space is limited. Designed for 19" rack-mount equipment with #12-24 threaded rails in accordance with EIA standards on both front and rear flanges. Constructed of high-quality aluminum. Available only in black powder coat finish.



Part #	RMS	Height	Width	Depth	Load Capacity
WR1922-13-02	13	22.75"	19"	12"	150 lbs.
WR1928-16-02	16	28"	19"	12"	165 lbs.
WR1935-20-02	20	35"	19"	12"	220 lbs.



19" Wall Mount Cabinets

Front door features a full length smoked and shatterproof glass door reinforced with decorative metal frame. Two 19" adjustable mounting brackets. Multiple cable entry points on roof and bottom of frames. Easily re-mountable. Powder coat paint finish. Front lock with key. Vented top panel. Rear panel can be used as a mounting plate. Grounding kit included. Sturdy steel construction.



Swing-Out Wall-Mount Racks

Swing-out design offers unparalleled access to component rear panels. The rear section can be easily separated from the mounting section for ease of field installation. The front section is reversible for right or left side opening. Designed for 19" rack-mount equipment with #12-24 threaded rails in accordance with EIA standards on both front and rear flanges. Constructed of high-quality aluminum. Available only in black powder coat finish.



Part #	RMS	Height	Width	Depth	Load Capacity
SR1935-20-02	20	35"	19"	18"	220 lbs.
SR1943-25-02	25	43.75"	19"	18"	250 lbs.

Part #	Description
680745	7U, Black, 24 x 18 x 12.4 in.
680945	9U, Black, 24 x 18 x 15.7 in.
681245	12U, Black, 24 x 18 x 21 in.

Racks & Cabinets - Rack Shelves, Enclosures, Lockboxes, Etc



Rackmount Computer Keyboard

Occupies 1 3/4" (1 space) and includes a high-quality full 101 key AT style keyboard, with trackball and padded wrist-rests. An articulating arm hinges to provide effective cable management. Comes complete with 12' keyboard and trackball cables including PS/2 connectors and one DB9 serial adaptor. Finished in durable black powder coat.



Part # RM-KB

Fixed Writing/Computer Keyboard Shelf

Bolts quickly to any 19" rack to create an ideal work-space. With an attractive, black laminate top made from 3/4" furniture-grade MDF board, it occupies 2 rackspaces and comes complete with special rail-mounting hardware.



Part # FWS

Lockboxes

Safely secure gear in rackmount LBX series lockboxes. Nine inches deep and 4 space models are offered with a durable black powder coat finish.



Part #	Racking Height
LBX-3	5-1/4" (3 space)
LBX-4	7" (4 space)



DLBX Series DVR Lockbox

Optimized to handle the active or passive thermal management needs of digital video recorders and other equipment, the DLBX mounts vertically or horizontally to the wall and can be used as a monitoring shelf. Configurable thermal management system includes fan and two filters and can be set up to accommodate the needs of any DVR. Cable pass-throughs, EKO's and tie points facilitate cable management while standard key-locked hinging front door allows easy equipment access. 100 lb. weight capacity.



Part #	Description
DLBX	DVR lockbox with fan
DLBX-WM	Pair of wall mount brackets for DLBX
DLBX-RR5	Rackrail kit for DLBX, 5 rackspaces
FC-4-1C	Proportional speed thermostatic fan control for DLBX

VLBX Series Time-Lapse Lockboxes

Provides high security with easy equipment access. Includes a factory-installed 4 1/2" fan (95 CFM), washable filter, and rubber feet. The standard keylocked solid hinging front door allows easy equipment access, while the mechanically interlocking top provides added security, yet removes easily for equipment servicing. Custom sizes and plexiglass front panel available.



Part #	Description	Inside Dimensions (W x H x D) inches
VLBX	VTR lockbox with fan	21 1/4 x 8 7/16 x 21

Racks & Cabinets - Rack Shelves, Enclosures, Lockboxes, Etc



VLBX Series Time-Lapse Lockboxes (cont.)

Part #	Description	Inside Dimensions (W x H x D) inches
VLBX-5.5	VTR lockbox with fan	18 1/4 x 4 7/8 x 15 1/2
VLBX-WM	Pair of wall mount brackets for VLBX	n/a

LCD Monitoring Desks

Versatile, configurable monitoring desk system provides more useable space in a smaller footprint and is optimized for use with LCD screens. Modular design allows economical additions and limitless configuration choices. Connecting wedges available for versatile monitoring setups including curved or serpentine command and control configurations. Available in an attractive maple or light charcoal finish, in both 64" and 48" widths.



Desks

Part #	Description
LD-48LC	LCD Monitoring Desk, 48", Light Charcoal Finish
LD-48LC-RA	LCD Monitoring Desk, 48", Add-A-Bay™ Right, Light Charcoal Finish
LD-48MP	LCD Monitoring Desk, 48", Maple Finish
LD-48MP-RA	LCD Monitoring Desk, 48", Add-A-Bay™ Right, Maple Finish
LD-64LC	LCD Monitoring Desk, 64", Light Charcoal Finish
LD-64LC-RA	LCD Monitoring Desk, 64", Add-A-Bay™ Right Light Charcoal Finish
LD-64MP	LCD Monitoring Desk, 64", Maple Finish
LD-64MP-RA	LCD Monitoring Desk, 64", Add-A-Bay™ Right, Maple Finish

Desk Accessories

Part #	Description
LD-SP-LC	Side panels for LCD Monitoring Desk, Light Charcoal Finish, Pair
LD-SP-MP	Side panels for LCD Monitoring Desk, Maple Finish, Pair
LD-PSP-LC	Full height side panels for LCD Monitoring Desk, Light Charcoal Finish, Pair
LD-PSP-MP	Full height side panels for LCD Monitoring Desk, Maple Finish, Pair
LD-LP-LC	Privacy divider for LCD Monitoring Desk, accommodates light bridge, light charcoal finish
LD-LP-MP	Privacy divider for LCD Monitoring Desk, accommodates light bridge, maple finish
LD-P-LC	Privacy divider for LCD Monitoring Desk, full height, light charcoal finish
LD-P-MP	Privacy divider for LCD Monitoring Desk, full height, maple finish

The Convective Series™

Featuring engineered ventilation patterns on consoles, top monitor racks, doors, and side panels, this series is optimized to facilitate natural convective cooling to extend equipment life and reduce maintenance. Compared to other consoles, The Convective Series™ offers a narrow 22" wide space-saving design. Unique 'zero-space' wedge minimizes room space required for installation, while advanced cable management features reduce installation time. Add a suffix, -BK for black, -GY for granite gray or LG for light gray, at end of part number for desired color.



Part #	Description
SC-1427-1217(C)	Convective console
SC3T-1427-1217-12(C)	Top monitor racks, straight



The Convective Series™ (cont.)

Part #	Description
SC-CBS-27(C)	Console caster base
SC-1427-1460(C)	Console single bay - includes rear door
SCFD-14(C)	Locking solid front door, 14 space
SCFD-13(C)	Security rack front door with 3 point latch
SCRK-1327(C)	Security rack - 27" deep, 13 rackspaces
SCRKW45-1327(C)	45° connecting wedge for security rack
SCRK-1327(C)-S	Slide out rotating rackbay system, 11 useable rackspaces, security rack
SCW45-1427-1217(C)	45° connecting wedge for consoles (base console only), 17° slope
SCW45-1427-1460(C)	45° connecting wedge for consoles (base console only), 60° slope
SC3TW45-1427-1217-1217(C)	45° connecting wedge for 17° sloped top monitor race
SC3T-1427-1217-1217(C)	Top monitor (3rd tier), 12 rackspaces, 17° slope
SCRK-4427(C)	Security rack - 27" deep, 44 rackspaces
SC-TK	Stainless steel toe kick/footrest
SC-RR12	Additional top monitor 12 space rail kit
SC-RR27	Additional console 27 space rail kit

The Quiet-Cool Series™ Console

Engineered thermal management includes baffled air intake and baffled exhaust on rear doors to keep equipment cool. Gasketed front and rear doors, as well as console base, isolate user from noise created by hard drives, DVRs, etc. Fully welded 14-gauge construction (no assembly required). UL Listed in the US and Canada. Available with a 17° or 60° sloped upper tier. Three pairs fully-adjustable 11-gauge 10-32 threaded rackrail. Rackrail marked in numbered rack-space increments. Brush grommet cable entry above work surface. Three point locking rear door standard on top monitor rack. Unique zero-space wedge saves space and includes 3 point locking rear door allowing interior to be used for cable management and power distribution. Color = C: -BK for black, -GY for granite gray or LG for light gray, at end of part number for desired color.



Part #	Description
SCQ3T-1427-1217-12(C)	Top monitor rack (3rd tier), 12 rackspaces, straight face
SC3TW45-1427-1217-12(C)	45° connecting wedge for straight top monitor rack
SCQ3T-1427-1217-1217(C)	Top monitor rack (3rd tier), 12 rackspaces, 17° slope
SCQRK-1327(C)-S	Slide out rotating rackbay system, 11 useable rackspaces, security rack
SCQRK-1327(C)	13 space (22 3/4"), 27" deep stand alone rack with rear door
SCRKW-1327(C)	45° connecting wedge for security rack
SCRK-1327(C)-S	Slide out rotating rackbay system, 11 useable rackspaces, security rack
SCW45-1427-1217(C)	45° connecting wedge for consoles (base console only), 17° slope
SCW45-1427-1460(C)	45° connecting wedge for consoles (base console only), 60° slope

Racks & Cabinets - Rack Shelves, Enclosures, Lockboxes, Etc



SH Series Zero Space Rackshelves

Designed for use in the Slim 5, AXS, SRSR and WR equipments racks. Feature full-depth front and rear rackmounting, providing a secure shelf for non-rack-mount components. A truly unique design, this "zero-space" shelf actually mounts to the sides of the rackrail (not the threaded face) providing more useable shelf area and features up to a robust 250 lbs. weight capacity, depending on model. Two handy "L" brackets are included to help position equipment. Constructed from 16-gauge steel, includes mounting hardware and is finished in a durable black powder coat.



Part #	Depth	Weight Capacity	Fits
SH-5A	19 1/4"	250 lbs.	20" depth AXS and Slim 5 racks
SH-5A-26	26"	250 lbs.	26" depth AXS and Slim 5 racks
SH-SRSR	16"	200 lbs.	SRSR racks
SH-WR	24"	250 lbs.	WR racks

Universal Rackshelves

These easy-to-install shelves fit all components up to 17 3/8" wide to quickly meet all of your rackmounting needs. Made from 16-gauge steel and finished in a durable black powder coat.



Part #	Racking Height	Depth	Capacity
U1	1 3/4" (1 space)	11"	35 lbs.
U2	3 1/2" (2 space)	14 3/4"	50 lbs.
U3	5 1/4" (3 space)	14 3/4"	70 lbs.
U4	7" (4 space)	15 1/2"	85 lbs.

Half-Rack Shelf

Now you can mount half-rack components, wireless units, and other gear horizontally with the UTR1 half-rack shelf. A universal mounting hole pattern accommodates virtually any half or third space component, equipment mounting hardware is included.



Constructed from 16-gauge steel with a 25 lb. weight capacity and finished in a durable black powder coat. Racking height is 1 3/4" (1 space). Depth is 10".

Part # UTR1

Clamping Rackshelves

For components which require captivation, these offer a solution. Equipped with rubber-lined clamps which secure your component from the top, all RC and CAP Series products are additionally outfitted with adjustable "L" brackets in back to provide an optimally secure fit. Vented bottoms. 16-gauge steel design. Durable black powder coat. RC models assembled. CAP units unassembled.



Part #	Racking Height	Depth
CAP5	8 3/4" (5 space)	15 1/2"
CAP6	10 1/2" (6 space)	15 1/2"
CAP7	12 1/4" (7 space)	15 1/2"
CAP8	14" (8 space)	15 1/2"
RC-2	3 1/2" (2 space)	15 1/2"
RC-3	5 1/4" (3 space)	15 1/2"
RC-4	7" (4 space)	15 1/2"

Adjustable Rackshelf

Front to rear mounting adjustment from 19 1/2" to 25" deep, this versatile shelf rack mounts most video decks and tower CPU's. Knock-down for freight and space economy, this 5 1/4" (3 space) adjustable shelf support 500 lbs. Fits in racks with a minimum 25" overall depth. Shelf area (W x D) is 17 3/8" x 22 1/4".



Part # AS3-22



Knock-Down Rackshelves

Made from heavy 16-gauge steel, the ventilated bottoms measure up to 20 1/2" deep. Ear heights range from 2 to 10 spaces and are sold in pairs. All assembly hardware is included.



Bottom Series

Part #	Depth
KDB	15 1/2"
KDB-14	14"
KDB-17.5	17 1/2"
KDB-20.5	20 1/2"

Ear Series



Part #	Racking Height	Depth
KDE10	17 1/2" (10 space)	15 1/2"
KDE2	3 1/2" (2 space)	15 1/2"
KDE2S	3 1/2" (2 space)	11 1/2"
KDE3	5 1/4" (3 space)	15 1/2"
KDE3S	5 1/4" (3 space)	11 1/2"
KDE4	7" (4 space)	15 1/2"
KDE4S	7" (4 space)	11 1/2"
KDE5	8 3/4" (5 space)	15 1/2"
KDE6	10 1/2" (6 space)	15 1/2"

Vented Cantilever Shelf

This 3 space (5 1/4") unit is capable of supporting up to 60 lbs., and is 17 3/4" deep. Equipped with a slotted rear flange for effective cable management and made from 16-gauge steel. Black powder coat finish. TIA/EIA compliant.



Part # U317

Vented Center Mount Shelf

18" deep with a 50 lb. capacity, the vented center mount shelf features cable management built into the slotted front and rear flanges. Occupies 2 spaces (3 1/2"), black powder coat finish. TIA/EIA compliant.



Part # U2MS

Heavy-Duty Sliding Shelf

Weight capacity of 50 lb. Heavy-duty 16-gauge steel construction. Capable of latching in an open or closed position, the shelf slides on ball bearings to an extended length of 14". A telescopic rear support mounts the shelf to any rack (rear rackrail required in steel racks). Occupies slightly more than a single rackspace. Fits in racks with a minimum 16" overall depth. Shelf area (W x D) is 17 1/2" x 14 3/4".



Part # SS

Low Profile Sliding Shelf

Filling just a single rackspace, the low profile SSL sliding shelf extends 11" on nylon roller slides equipped with positive-stop layouts. A telescopic rear support mounts to any rack (rear rackrail required in steel racks). Black laminate material. 35 lb weight capacity. Fits in racks with a minimum 16" overall depth. Shelf area (W x D) is 17" x 14".



Part # SSL

Racks & Cabinets - Rack Shelves, Enclosures, Lockboxes, Etc



Wide Unit Shelf System

Accommodating components too wide to fit the 7 1/8" inside width of standard rackselves, these shelf systems fit units up to 22 1/2" wide, and either bolt into millwork or to the mounting angle of standard rackrail. Occupies 3 rackspaces. The WUSS system comes complete with a pair of ears, a bottom, and appropriate assembly hardware.



Part #	Depth
WUSS11.5	11 1/2"
WUSS14	14"
WUSS15.5	15 1/2"
WUSS17.5	17 1/2"
WUSS20.5	20 1/2"

EB/FEB Series Blank Panels

Available in your choice of flanged or flat style, these economical steel blank panels feature a durable black powder coat finish. EB Series panels are 16-gauge, FEB Series panels are 14-gauge steel.

Part #	Type	Racking Height
FEB1	Flat	1 3/4" (1 space)
FEB2	Flat	3 1/2" (2 space)
FEB3	Flat	5 1/4" (3 space)
FEB4	Flat	7" (4 space)
FEB5	Flat	8 3/4" (5 space)
FEB6	Flat	10 1/2" (6 space)



Shelves

Options for load ratings up to 200 lbs. suitable for use with lightweight and heavyweight active and passive equipment. Options for standard (20" wide) or compact (16.5" wide) keyboards. Slide out mouse pad integral to all keyboard shelves.



Rack Mount Shelves

Part #	Description	Dim. HxWxD in (mm)	Load Rating	No. Rack Spaces
SRM19CMV3	Cantilevered shelf, vented aluminum - includes 2 piece shelf that mounts to front and back of EIA racks	5.2 x 19.0 x 24.9 (132.1 x 482.6 x 632.5)	200 lbs.	3
SRM19FM1	Front mount shelf, steel	1.7 x 19.0 x 15.2 (43.2 x 482.6 x 386.1)	30 lbs.	1
SRM19FM2	Front mount shelf, steel	3.5 x 19.0 x 15.2 (88.9 x 482.6 x 386.1)	50 lbs.	2
SRM19CM3	Cantilevered shelf, aluminum - includes 2 piece shelf that mounts to front and back of EIA racks	5.2 x 19.0 x 12.5 (132.1 x 482.6 x 317.5)	200 lbs.	3
SRM19X18A1	Adj. mount shelf, steel, mounts to front and back of EIA racks	1.7 x 19.0 x 18.0 (43.2 x 482.6 x 457.2)	250 lbs.	1
SRM19X25A1	Adj. mount shelf, steel, mounts to front and back of EIA racks	1.7 x 19.0 x 25.0 (43.2 x 482.6 x 635)	250 lbs.	1



Shelves (cont.)

Keyboard Shelves

Part #	Description	Dim. HxWxD in (mm)	Load Rating
SRM19MK2	Rack mount shelf with keyboard tray, aluminum; accepts keyboards up to 16.5" wide, mounts to front and back of EIA racks	3.4 x 17.0 x 18.5 (86.4 x 431.8 x 469.9)	200 lbs.
SRM19MPK2	Rack mount shelf with pivoting keyboard tray, aluminum; accepts keyboards up to 20" wide, mounts to front and back of EIA racks	3.4 x 17.0 x 24.4 (86.4 x 431.8 x 609.6)	200 lbs.



VCR/DVR Security Lock Box

Designed for maximum protection of video time-lapse recorders and like equipment protecting it from unauthorized access with enough space for switchers and accessories. Can be mounted on top surfaces or wall-mounted with optional wall mounting brackets. Housing features heavy duty 18AWG steel frame construction, vented front and rear panels for cooling aided by the pre-installed ventilation fan. Also includes 2 rear cable access plugs. Front swing-out door comes with a pre-installed cam lock and key and the top panel is removable for additional access. Black powder coat finish.

Part #	Description
SE0920-21-02	VCR/DVR lock box
WB-SE-02	Optional mounting bracket set

High-Load Capacity Slide-Out Tray

With a depth of 23" and heavy-duty construction, this slide-out shelf design allows a load capacity of 150 pounds when extended. Designed for heavy equipment such as servers, UPS, batteries and other large weight equipment. These can be mounted on standard 19" width racks and enclosures and come in black powder coat finish. 1 RMS.



Part # ES0119-0123

Single-Sided Vented Shelves

Allow for added flow-thru ventilation. They are designed for 19" rack mount widths and are made of 16 AWG steel. The 1-piece design allows for strong support. Finished in durable black powder coat.



Part #	RMS	Dimensions (WxD) inches	Load Capacity
ES0219-0110	1	19 x 10.5	15 lbs.
ES0219-0115	1	19 x 15	35 lbs.
ES0219-0210	2	19 x 10.5	18 lbs.
ES0219-0215	2	19 x 15	38 lbs.

Single-Sided Non-Vented Shelves

These solid shelves are designed for 19" rack mount widths and are made of 16 AWG steel. The 1-piece design allows for strong support. Finished in durable black powder coat.



Part #	RMS	Dimensions (WxD) inches	Load Capacity
ES0319-0110	1	19 x 10.5	25 lbs.
ES0319-0115	1	19 x 15	40 lbs.
ES0319-0210	2	19 x 10.5	28 lbs.
ES0319-0215	2	19 x 15	42 lbs.



Racks & Cabinets - Rack Shelves, Enclosures, Lockboxes, Etc



Slide-Out Shelf - 19" x 14"

This design allows for easier access to equipment by sliding out the ball-bearing mounted tray which extends a full 14 inches from its closed position. The telescopic rear support mounts on the rails of an open bay rack. Made from 16 AWG steel and comes in a durable black powder coat finish. Load capacity is 55lbs.



Part # ES0419-0114

1-Piece Double-Sided Shelves

The 1-piece double-sided shelves are center mounted between the upright rails of all standard 19" panel width open racks and are offered in non-ventilated and ventilated designs. Made of 16 AWG steel construction in black powder coat finish. RMS is two. Color is black.



Vented Shelves

Part #	Dimensions (Width/Depth)	Load Capacity (lbs)
ES0619-0218	19" x 18"	100
ES0619-0225	19" x 25"	120

Non-Vented Shelves

Part #	Dimensions (Width/Depth)	Load Capacity (lbs)
ES0819-0218	19" x 18"	100
ES0819-0225	19" x 25"	130

2-Piece Double-Sided Split Shelves

The 2-piece divided split-design shelves allow the installers to easily mount each side individually without the need of removing existing equipment. These are mounted on the upright rails of all standard 19" panel width open racks and are offered in non-ventilated and ventilated designs. Made of 16 AWG steel construction in black powder coat finish.



Part #	Type	RMS	Dimensions (inches)	Load Capacity
ES0919-0225	Non-Vented	2	19 x 25	100 lbs.
ES0719-0225	Vented	2	19 x 25	130 lbs.

Keyboard Shelf with Reversible Mouse Tray - 19" x 18"

The stationary keyboard/mouse shelf mounts on any 19" width open rack and accommodates standard keyboards and its mouse tray can be mounted on the left, right or center of the tray. Takes up 1 RMS (1.75") and comes in black powder coat finish. Load capacity is 12 lbs.



Part # ES1019-0108

Hide-Away Keyboard Shelf with Pull-Out Mouse Tray

Designed for mounting on 19" width enclosures, this hide-away keyboard shelf is mounted on a bearing track which allows the keyboard shelf to be stowed when not in use. A quick slide pull and 90 degree turn is all it takes to set up the keyboard tray for operation. Incorporated in the tray is a pull-out mouse shelf. Takes up 1 RMS (1.75") of panel space and comes in black powder coat finish.



Part # ES1119-0115



Adjustable Double-Sided Equipment Shelf

Material is cold rolled steel 16 AWG. Black powder coat finish. Height is 2 rack units. Depth is 18" collapsed and 31" extended. Load capacity is 120 lbs max (4 attach points). Mounting hardware included.



Part # ES1219-0218

Blank Panels

These blank panels are used to cover gaps or free spaces in racks or enclosures. They may also be used for drilling and mounting specialized equipment or components. Made of 16 AWG cold rolled steel and available in various rack height sizes. Finished in black powder coat.



Part #	RMS	Height
BP19-01	1	1.75"
BP19-02	2	3.50"
BP19-03	3	5.25"



19" Rack Shelves



2 Point Fixed

Part #	Description
674830	19", 1U, unslotted, 13.5 in. deep
674835	19", 2U, unslotted, 13.5 in. deep
674935	19", 2U, unslotted, 13.7 in. deep
677453	19", 2U, slotted, 21 in. deep
670200	2U, double shelf, non-vented - compatible with 673601, 674201, 674801
670201	2U, double shelf, vented - compatible with 673601, 674201, 674801

4 Point Fixed

Compatible with 674200 only.

Part #	Description
676035	19", unslotted, 13 in. deep
686035	19", slotted, 13 in. deep
678052	19", 1U, unslotted, 13.5 in. deep
688052	19", slotted, 20 in. deep

4 Point Sliding

Compatible with 674200 only.

Part #	Description
676036	19", slotted, 13 in. depth, black
686034	19", unslotted, 13 in. deep
678054	19", 1U, unslotted, 13.5 in. deep
688053	19", unslotted, 21 in. deep

Sliding Shelf

Heavy Duty, 485 x 750 x 60 mm (19.1 x 29.3 x 2.4 in.). Four mounting points on sides. Complete with rear cable management System. Unslotted. Heavy Duty Load capacity: 176 lbs. Hardware included, easy to install. Material: Sheet steel. Color: Black.



Part # 681074

Racks & Cabinets - Rack Shelves, Enclosures, Lockboxes, Etc



Fixed Shelf

19", Slotted, 745 mm (29") Depth, Black Heavy Duty. Slotted. Maximum load of 220 lbs. Four mounting points on sides. Installation hardware included. Material: Sheet steel. Black.



Part # 671075

Hinged Wall Brackets

For use with most 19" patch panels. Each level is individually hinged. Screws included. Black.



Part #	Description
402439	1U
402446	2U
402453	3U
402460	4U
402477	6U

Sliding Keyboard and Storage Drawers

Lockable drawer for keyboards up to 16 in. wide. Fits all Intellinet Network Solutions cabinets and racks. Material is sheet steel.



Part #	Description
673001	1U, keyboard not included
165723	1U, includes keyboard and trackball
673002	2U, lockable
673000	3U, lockable, black 485 x 480 x 135 mm

HellermannTyton

Shelves

For mounting telecommunication devices in a 19" rack or cabinet. Cantilevered shelf mounts to the front or rear of the racks mounting rails. Both the center weight and the cantilevered shelf are black and manufactured from 16 gauge steel and come with 10-32 and 12-24 mounting hardware. Cantilevered shelf is rated for 50 pound capacity and the center weight is rated for 75 pound capacity. Shelves are solid - add V to end of part number for vented shelves.



Part #	Dim. (HxWxD)	Description
T19X145	3.44" x 19" x 14"	Solid Cantilevered Shelf
T19X195CW	3.44" x 19" x 19"	Solid Center Weight Shelf



Rack Mount Shelves

Designed for use in equipment and cable management racks, for locating keyboards, monitors or other shelf-located network equipment. Available in either cantilevered or center weight style. Both styles are constructed from 16-gauge steel with a black polyurethane finish in either solid or louvered ventilated bottom style. Rated for a maximum of 50 lbs. capacity. Number of rack spaces is two.



Part #	Description	Dim. inches (H x D)
ERB-14C	Cantilever Vented Bottom, Black	3.5 x 14
ERB-14CS	Cantilever Solid Bottom, Black	3.5" x 14"
ERB-18C	Cantilever Offset Vented Bottom, Black	3.5" x 18"
ERB-18CS	Cantilever Offset Solid Bottom, Black	3.5" x 18"
ERB-19C	Center Weight Vented Bottom, Black	3.5" x 19"
ERB-19CS	Center Weight Solid Bottom, Black	3.5" x 19"

Racks & Cabinets - Rackmount Power Strips & Surge Protection



115 Volt Vertical Power Strips

Constructed from 16-gauge steel, finished in a durable black powder coat and are UL Listed in the US and Canada.

Both 15 and 20 amp circuits. Isolated ground circuits. Single and dual circuits (with color-coded outlets for each circuit).

Multiple MOV surge and spike protection (non-MOV strips are available). Circuit breaker protection (non-protected strips are also available). Multiple termination choices. Features mounting lances and quick clips. Engineered to attach to the rackrail brackets on all of our welded racks.



15 Amp Power Strip

Part #	Termination	Protection	No. Outlets	OD Lgth (inch)	Fits Racks Coded	Circuit
PD-1015C	Cord with NEMA 5-15P plug	MOV surge+EMI filter+breaker	10	40	Medium	15 Amp (1)
PD-1015C-NS	Cord with NEMA 5-15P plug	Circuit breaker	10	40	Medium	15 Amp (1)
PD-1215	3' flex with 8" tails	None	12	57	Long	15 Amp (1)
PD-1415C	Cord with NEMA 5-15P plug	MOV surge+EMI filter+breaker	14	57	Long	15 Amp (1)
PD-1415C-NS	Cord with NEMA 5-15P plug	Circuit breaker	14	57	Long	15 Amp (1)
PD-2415SC-NS	Cord with NEMA 5-15 plug	Circuit breaker	24	60	Long	15 Amp (1)
PD-2X615	3' flex with 8" tails	None	12	57	Long	15 Amp (2)
PD-615C	Cord with NEMA 5-15P plug	MOV surge+EMI filter+breaker	6	26 1/2	Short	15 Amp (1)
PD-615C-NS	Cord with NEMA 5-15P plug	Circuit breaker	6	26 1/2	Short	15 Amp (1)



Racks & Cabinets - Rackmount Power Strips & Surge Protection



115 Volt Vertical Power Strips (cont.)

20 Amp Power Strips

Part #	Termination	Protection	No. Outlets	OD Lgth (inch)	Fits Racks Coded	Circuit
PD-1020C-NS	Cord with NEMA 5-20P plug	Circuit breaker	10	40	Medium	20 Amp (1)
PD-1020J-IG	J-Box	None	10	44	Medium	20 Amp ISO ground (1)
PD-1220C-NS	Cord with NEMA 5-20P plug	Circuit breaker	12	57	Long	20 Amp (1)
PD-1220J	J-Box	None	12	61	Long	20 Amp (1)
PD-1220J-IG	J-Box	None	12	61	Long	20 Amp ISO ground (1)
PD-2X620-J	J-Box	None	12	61	Long	20 Amp (2)
PD-620C-NS	Cord with NEMA 5-20P plug	Circuit breaker	6	26 1/2	Short	20 Amp (1)
PD-620J-IG	J-Box	None	6	30 1/2	Short	20 Amp ISO ground (1)



High Density 15 Amp Slim Power Strips

Power strips contain a number of outlets that have been spaced to accommodate plug-in power supplies. Measures 1 1/4" deep by 1 5/8" wide. Provides maximum usability while taking up minimum space. Comes complete with 10' power cord terminated with a NEMA 5-15P plug, 15 amp circuit breaker and mounting system.

Part #	Protection	No. Outlets	OD Length
PD-2415SC	MOV surge + EMI filter + breaker	24	60"
PD-2415SC-NS	Circuit breaker	24	60"

115 Volt Rackmount Power Strips

Rackmount units provide economical power distribution and sequencing.



Equipped with 8 circuit breaker protected 20 amp rear outlets (NEMA 5-20R), and one 15 amp front outlet (NEMA 5-15R). 9" depth provides easy access to the yoke-mounted rear outlets, while the extra-long 9' AC cord eliminates the need for an additional extension cord. An illuminated power switch is located on the front panel, and a 20 amp circuit breaker is located in the rear. Occupies one rackspace. UL File #E204950. UL Standard 1419. TIA/EIA compliant. Nine outlets (8 rear, 1 front).

Part # PD-920R-NS

Sequencing 15 amp power distribution provides 6-step sequencing to 6 rear outlets. Adjustable start time delay allows daisy-chaining of up to (3) PDS-615R's to act as a single 18 step unit. Sequencing intervals are facilitated via front panel controls, while all sequencing activity is monitored by a series of LED indicators also found on the front panel. Additionally, a remote up/down sequencing connection block is located on the rear panel which facilitates daisy-chaining and remote control. An illuminated combination power switch/circuit breaker is located on the front panel. 9" deep and includes a 9' cord. Finished in a durable black powder coat, occupies one rackspace. TIA/EIA compliant.

Part # PDS-615R

Equipped with eight 15 amp rear outlets and one 15 amp front outlet. Standard equipment includes surge and spike protection, EMI filtering and a 9' cord. A generous 9" depth provides easy access to the 15 amp rear panel outlets which are solidly mounted on yokes to eliminate deflection. An illuminated combination power switch/circuit breaker is located on the front panel. Finished in a durable black powder coat, occupies one rackspace. UL File #E204950. UL Standard 1419. TIA/EIA compliant.

Part # PD-915R



115 Volt Rackmount Power Strips (cont.)

The PD-815 series rackmount power distribution units are equipped with 8 rear outlets and feature a front pilot light for status indication. Standard equipment includes surge and spike protection, EMI filtering and a 9' cord. A generous 9" depth provides easy access to the 15 amp rear panel outlets which are solidly mounted on yokes to eliminate deflection.

Part #	Finish
PD-815R-PL	Black powder coat
PD-815RA-PL	Black brushed and anodize
PD-815RC-PL	Silver brushed and anodized



Rack-Mount Surge Protection Devices

Mounts on 19" equipment racks to provide point-of-use surge suppression for electronic equipment. Clamping profile tightly tracks AC sine wave. Six protected duplex receptacles - 5 in back and 1 in front. Available with easy-access ON/OFF rocker-style switch or without switch to avoid unnecessary equipment switching. Resettable circuit breaker protects against overloading and power-supply failure. Provided with 12 foot line cord with NEMA 5-15P, L5-15P, 5-20P or L5-20P plug. Lifetime limited downline warranty.



5500 Series - NEMA 5-15P, 5-20P

Part #	Description
5500-190	125V, 15A - with on/off switch - 12 outlets - standard blade plug
5500-15N	125V, 15A - without on/off switch - 12 outlets - standard blade plug
5500-192	125V, 20A - with on/off switch - 12 outlets - standard blade plug
5500-20L	125V, 20A - with on/off switch - 12 outlets - locking plug
5500-20N	125V, 20A - without on/off switch - 12 outlets - standard blade plug
5500-2NL	125V, 20A - without on/off switch - 12 outlets - locking plug
5500-NL	No ON/OFF Switch, Joules is 1440. Rating is 15A 120V
5505-190	120V, 15A - with on/off switch - resettable circuit breaker

4505 Series

19" rack mount no-surge power strip with switch.

Part #	Type	Length	Rating
4505-20L	Standard locking plug	12 ft. 14-3 SJT	120V / 20A
4505-20T	Standard locking plug	10 ft. 14-3 SJT	120V / 20A



Racks & Cabinets - Rackmount Power Strips & Surge Protection



Metered Power Distribution Units (PDU's)

Provides the reliable power distribution required for high-demand applications. Local LED display provides input current monitoring, giving on-site users the ability to monitor aggregate current draw as equipment is connected to each unit, preventing potential overload situations in high-density environments. Available in 110-120V or 208-240V with 20 and 30-amp options. Choose space-saving vertical zero-U or horizontal rack-mount styles with a variety of input and output plug types. *All 30 amp PDU's include a hardwired power input cord. Other configurations available on request.

Metered Vertical Power Distribution Units (PDU's)

Part #	Dimensions	Power Inputs/Outputs	Input Voltage	1 or 3 Phase	Amperage	Input Plug Type	Output Receptacle
MV121-1D1	31.25" x 1.75" x 2.25"	1/12	110	1	20	C20	5-20R
MV121-1B1	31.25" x 1.75" x 2.25"	1/12	110	1	30*	L5-30	5-20R
MV122-1C2	31.25" x 1.75" x 2.25"	1/12	208	1	30*	L6-30	C13
MV241-1D1	54.0" x 1.75" x 2.25"	1/24	110	1	20	C20	5-20R
MV241-1B1	54.0" x 1.75" x 2.25"	1/24	110	1	30*	L5-30	5-20R
MV242-1C2	54.0" x 1.75" x 2.25"	1/24	208	1	30*	L6-30	C13
MV213-1E2	46.75" x 1.75" x 2.25"	1/21	208	3	20	L21-20	C13

Metered Horizontal Power Distribution Units (PDU's)

Part #	Dimensions	Power Inputs/Outputs	Input Voltage	1 or 3 Phase	Amperage	Input Plug Type	Output Receptacle
MH101-1D1	1.75" x 17.25" x 5"	1/10	110	1	20	C20	5-20R
MH101-1B1	1.75" x 17.25" x 5"	1/10	110	1	30*	L5-30	5-20R
MH122-1C2	1.75" x 17.25" x 5"	1/12	208	1	30*	L6-30	C13

Power Cords

A hardwired power input cord is provided with all 30-amp PDUs. Power cords for 20-amp PDUs, available in multiple configurations to meet a variety power requirements, are sold separately.

Part #	Description
PCORD-F10	15/20A, C19 to L-620P, 10 ft.
PCORD-G10	15/20A, C19 to 5-15P, 10 ft.
PCORD-A10	15/20A, C19 to 5-20P, 10 ft.
PCORD-H10	15/20A, C19 to L5-20P, 10 ft.

Switched Power Distribution Units (PDU's)

Provides the solution to many power management problems common in IT environments, including unauthorized use of power outlets, equipment lock-up, in-rush current, overloaded circuits and the need for remote access to power outlets. These problems are addressed through an extensive feature set including individual outlet control which allow users to turn outlets on and off or recycle power, in order to reboot equipment and avoid unauthorized outlet usage. The power sequence feature controls the interval in which equipment is powered up or down to avoid in-rush current. The aggregate current draw can be monitored remotely or locally via digital display to avoid overload conditions. Switched Power Distribution Units can be accessed, configured and controlled via Telnet/SSH, HTTP/SSL, Serial Ports, and SNMP. *All 30 amp PDU's include a hardwired power input cord. Other configurations available on request.

Switched Vertical Power Distribution Units (PDU's)

Part #	Dimensions	Power Inputs/Outputs	Input Voltage	1 or 3 Phase	Amperage	Input/Output Plug Type
SV161-1D1	63.5" x 1.75" x 2.25"	1/16	110	1	20	C20/5-20R
SV161-1B1	63.5" x 1.75" x 2.25"	1/16	110	1	30*	L5-30/5-20R
SV162-1C2	63.5" x 1.75" x 2.25"	1/16	208	1	30*	L6-30/C13

Switched Horizontal Power Distribution Units (PDU's)

Part #	Dimensions	Power Inputs/Outputs	Input Voltage	1 or 3 Phase	Amperage	Input/Output Plug Type
SH081-1D1	1.75" x 17" x 7"	1/8	110	1	20	C20/5-20R
SH082-1C2	1.75" x 17" x 7"	1/8	208	1	30*	L6-30/C13
SH081-1B1	1.75" x 17" x 7"	1/8	110	1	30*	L5-30/5-20R

Accessories

Temperature and relative humidity probe, 10 ft. Each Switched PDU has the intelligence for environmental monitoring. An external probe designed to monitor temperature and relative humidity is available separately. Each 30-amp PDU includes a hardwired power input cord. Power cords for 20-amp PDUs, available in multiple configurations to meet a variety of power requirements, are sold separately.

Part # TCORD-10



Racks & Cabinets - Rackmount Power Strips & Surge Protection



Power Strips

Multiple mounting options. Dual circuit option for use with equipment requiring a redundant power supply. One rack space = 1.75" (44.45mm). Black.



Part #	Description	Dim. HxWxD in. (mm)
CMRPSH15	19" Horizontal rack mount power strip with a 15 amp circuit, 10 receptacles and a 10' power cord, NEMA 5-15P plug	1.72 x 3.75 x 19.00 (43.7 x 95.3 x 483.7)
CMRPSH20	19" Horizontal rack mount power strip with a 20 amp circuit, 10 receptacles and a 10' power cord, NEMA 5-20P plug	1.72 x 3.75 x 19.00 (43.7 x 95.3 x 483.7)
CMRPSV20	Vertical rack mount power strip with a 20 amp circuit, 10 receptacles and a 10' power cord, NEMA 5-20P plug	38.50 x 1.46 x 1.85 (977.9 x 37.1 x 47.0)
CMRPSVD20	Vertical rack mount power strip with a 20 amp circuit, 10 receptacles per circuit and 2 - 10' power cords, NEMA 5-20P plugs	66.25 x 1.46 x 1.85 (1682.8 x 37.1 x 47.0)

Power Distribution Units (PDU)

These power distribution units provide convenient multiple AC outlets and can be mounted either vertically in a "Zero U" configuration or horizontally in a "one U" configuration inside a 19" rack enclosure.



Part #	Outlets	Circuit Breaker	Input Plug	Cord Length
PDU1215	12 (NEMA5-15R)	15A	NEMA5-15P	15'
PDU1220	12 (NEMA5-20R)	15A	NEMA5-20P	15'
PDU2430	12 (NEMA5-20R)	2-15A*	NEMA L5-30P	12'



Rackmount Models

Supports 1U rackmount, wallmount, under-counter and variety of other creative installation types. Cord 15 ft. Housing is black. Dimensions (LxWxH) 1.75 x 19 x 4.5.



Part #	Outlets	Electrical Rating
RS-1215	12	1800W (15A)
RS-1215-20	12	1800W (15A)
RS-1215-RA	12 (Right Angle)	2400W (20A)
RS-0615-R	6 (NEMA5-15R) Back	1800W (15A)
RS-0615-F	6 (NEMA5-15R) Front	1800W (15A)



Power Strips

Power outlets in 19" rack-mount and vertical configurations. The rack-mount units feature 10-outlets (2-front and 8 rear) with illuminated rocker power switch and 15 amp circuit breaker. The vertical unit is designed for mounting inside equipment enclosures and feature a 16 or 20 outlet capacity plus isolated poles. Finished in black powder coat. UL Listed.



Part #	Outlets	Format/Height
HPS-10	10 (2 Front-8 Rear)	19" Horiz.
VPS-1604	16	Vertical 4'
VPS-2006	20	Vertical 5 ft.



Rack Mount UPS

Advanced protection against power outages, sags, surges and line noise. RISC-based microprocessor maintains proper charge, provides consistent power output and helps extend battery life. Built-in expansion slot for optional SNMP card. Automatic voltage regulation (AVR), cold start capability and diagnostics. 1120 Joules telephone/fax and network surge protection. Circuit breaker protection offers quick recovery from overload and short circuit events. LED and audible alert system and power management software help monitor critical functions. \$100,000 connected equipment guarantee (US and Canada only). Lifetime Warranty, UPS; Three-year Warranty, battery.



Part # 168205

Our inventory changes daily.

Please contact us if the product or part you are looking for is not included in this publication.



Racks & Cabinets - Rack Wire Management



MK Cable Management Rack

Engineered for high-density patching applications. Unique indexed swiveling front-mount cable rings. Oversized cable ducts capable of handling massive cable bundles. Integral top cable ladders and cable trays front and rear. Hook and loop fasteners and front cable feed-through hole plugs are provided for easy cable management. Rack is 24" wide for use with raised flooring tiles. 100 rack screws are included. Accommodates vertical power strips L (long), M (medium) and S (short). TIA/EIA compliant.



Part #	Overall Height	Overall Depth	Mounting Channel Depth	Width
MK-19-45	84 1/4"	16 7/16"	6 3/8"	24"
MK1945-24	84 1/4"	24"	14"	24"

Pivoting Panel Mounts

Allows easy rear access. Design facilitates punching down while fully open. Tie points for cable management, hook and loop cable fasteners. Rugged steel construction. Black powder coat finish. Rack screws and hook and loop fasteners included. Note: When using the door option, top cover is required.



Part #	Dimensions (W x H x D)
PPM-2	19" x 3.5" x 6" pivoting panel mount
PPM-4	19" x 7" x 6" pivoting panel mount
PPM-6	19" x 10.5" x 6" pivoting panel mount
PPM-6-12	19" x 10.5" x 12" pivoting panel mount
PPM-8-12	19" x 14" x 12" pivoting panel mount
PPM-8-18	19" x 14" x 18" pivoting panel mount
PPM-6-12K	PPM-6-12 with cover and door
PPM-8-12K	PPM-8-12 with cover and door
PPM-8-18K	PPM-8-18 with cover and door

Hinged Panel Mount

Provides simple and straightforward wall-mounting of rackmount components and can be rackmounted to any open frame rack. Hinged to provide rear access to mounted components, each of the 1, 2, 4, and 6 space units are 6" deep. Abundant tie points for internal cable management, smooth cutout in rear for cable pull-through, heavy-duty threaded rackrail.



Durable, attractive black powder coat finish, rack screws included

Part #	Description
HPM-1	1 3/4" (1 space) Racking Height
HPM-2	3 1/2" (2 space) Racking Height
HPM-4	7" (4 space) Racking Height
HPM-6	10 1/2" (6 space) Racking Height
HPM-LID	Hinged Panel Mount Lid

CK Series Cable Organizers

Built to handle extra large cable bundles while providing simple distribution provisions front and rear. Made to fit RL10-45 and RL12-45 relay racks, each CK series organizer measures 6" wide by 9" deep (4 1/2" front, 4 1/2" rear), and is outfitted with strategically-placed lacing points with abundant front to rear cable openings. Center units are intended to be bolted between racks, and allow front and rear cables to exit either left or right. End units facilitate left or right cable exit as well, each of which is selectable by turning the duct when mounting. Optional split organizer covers hides wires and cables and enhances appearance. The covers fit both center and end units, hang off to the side when removed and are split for quick access. Black powder coat finish, two pieces cover one duct. TIA/EIA compliant.



Part #	Description
CK-45	Center organizer, 45 sp. (84" overall) black finish



CK Series Cable Organizers (cont.)

Part #	Description
CK-45C	Cable organizer covers, 2 pieces, 45 space (84" overall) black finish
CK-45E	End organizer, 45 sp. (84" overall) black finish

Vertical Cable Manager

Full-length cable manager for RLA Series relay racks features abundant cable pass-throughs, cable lacing points, and solid front door with 3-point magnetic latch.



Part # RLA-CC

Horizontal Cable Managers

These 19" cable managers provide a strong yet attractive method for organizing patch cords and maintaining required bend radius. Finished in a durable black powder coat. The D-Ring product provides a creative solution for adding individual D-rings to a rack or on a wall. Mounting holes are rack compatible or can be used to mount directly to any wall material using appropriate fasteners. TIA/EIA compliant.



Part #	Description	Panel Width
HCM-1	1 3/4" (1 space) "micro-clip" style	19"
HCM-1D	1 3/4" (1 space) "D-ring" style	19"
HCM-1DR	1 3/4" (1 space) "D-ring" front and rear	19"
HCM-1DV	1 3/4" (1 space) "D-ring" style with end rings	19"
HCM-1V	1 3/4" (1 space) "micro-clip" style with end rings	19"
HCM-2D	3 1/2" (2 space) "D-ring" style	19"
HCM-2DR	3 1/2" (2 space) "D-ring" front and rear	19"
HCM-2DV	3 1/2" (2 space) "D-ring" style with end rings	19"

Horizontal Lacer Bars

Made from 1/4" diameter rod with flattened ends (model LBP-1R, LBP-1.5 and LBP-1R4) or 3/16" thick aluminum (model LBP-1S), and finished in black powder coat, each bar provides convenient cable tie points. Model LBP-1R4 features a 4" offset and model LBP-1.5 features a 1 1/2" offset for easy viewing of cable identification. Model LBP-1A features a formed "L" shape, generous cable tie slots, and a special coating to protect cable. All lacer bars sold in packs of 10. TIA/EIA compliant.



Part #	Style	Panel Width
LBP-1.5	1.5" offset round rod	19"
LBP-1A	"L" bar	19"
LBP-1R	Round rod	19"
LBP-1R4	4" offset round rod	19"
LBP-1S	Rectangular bar	19"
LBP-2A	2" offset "L" bar	19"
LBP-4A	4" offset "L" bar	19"
LBP-6A	6" offset "L" bar	19"

Rackmount Cable Tray

Handy horizontal cable tray mounts on any 19" rack or cabinet and neatly routes cable bundles from side-to-side. Turn-downs on sides help maintain cable bend radius. Finished in a durable black powder coat. TIA/EIA compliant.



Part #	Racking Height
HCT-1	1 3/4" (1 space)
HCT-2	3 1/2" (2 space)

Racks & Cabinets - Rack Wire Management



Versi-Duct® Slotted Duct Cable Management System

Provides a simple, versatile solution for fiber and copper cable organization and management. Designed to fit on any standard 19" horizontal equipment rack. Also uses a small number of accessories to achieve a wide range of cable management solutions. Vertical slotted duct comes in 35" or 80" rack lengths in Front Only or Front and Rear configurations with covers. Horizontal slotted duct is available in one-rack (1RU-1.75") or two rack (2RU-3.5") unit sizes. Front Only or Front and Rear configurations with covers. Includes Bend Radius Compliant Router.



Part #	Description
49265-DV1	Vertical Channel Divider
49265-FN4	Bend Radius Compliant Funnel, rear only
49265-WR1	Cable Retainer, 10 per package
49265-HNG	Duct Cover Hinge, 4 per package
49265-EX3	Extended Cover, Front-only 2RU
49265-EX1	Extended Cover, Front-only 1RU
49265-SL1	Slack Loop Storage Organizer
49265-SL2	Slack Loop Storage Organizer, extended (2")
49265-BRK	Mounting Bracket, 2 per package

Versi-Duct® Vertical Cable Management System

Designed to route cable and mount onto an industry standard 19" equipment rack. One 83" or two 35" ducts span the length of a standard seven foot rack. The ducts also come with concealing covers and an assortment of cable management accessories. Versatile solution for fiber/copper cable organization and management. Front only and front/rear configurations. Cable concealing covers. Mount on standard 19" equipment racks with top, bottom and side cable entry. Unique spacers allow for 100% fill capacity.



Part #	Description
49265-CR1	Bend-Radius Compliant Router
49265-DV2	Lateral Channel Divider 4x5 (front)
49265-DV3	Lateral Channel Divider 4x4 (rear)
49275-VFR	Vertical Slotted Duct 4x4 rear and 4x5 front (front and rear) 35"H
49275-VFO	Vertical Slotted Duct 4x5 (front only) 35"H
49266-VFR	Vertical Slotted Duct 4x4 rear and 4x5 front (front and rear) 83"H
49266-VFO	Vertical Slotted Duct 4x5 (front only) 83"H

Horizontal Patch Cord Organizers

Available in 1RU, 2RU and 4RU sizes. The 1RU and 2RU versions route and organize cables. The 4RU organizer includes a shelf for added support of large volumes of patch cords.



Part #	Height	Rings
49253-BCM	2RU	4"
49253-LPM	1RU	4"

Rack and Frame Cable Management

One- and Two-Position Organizer Panel

Two-position cord organizers combines horizontal and vertical distribution rings with individual routing clips for patch cord organization between patch panels. One-position cord organizer is 1RU with vertical distribution rings and individual routing clips.

Part #	Description
49252-P01	One-Position
49252-P02	Two-Position



Rack and Frame Cable Management (cont.)

Combo Front/Rear Manager

Manages front and rear cables/cords in a 2RU standard rack space. Oversized front rings meet larger-capacity requirements for patch cords. Rear management maintains bend radius of cables routed from vertical channels. Retention rings and fixed anchor points for 'loose-fit' or tie-wrapped bundles.



Part # 49252-PCM

Tie Wrap Bar

Mounts at the rear of standard EIA racks to support cable bundles and help maintain their bend radius near cable terminations. Fixed anchor points for "loose-fit" wrapped cables.



Part # 49258-TWB

Vertical Management Components

Flexible, customizable front and rear vertical management for varying rack configurations. 'Open ring' system can be arranged and changed as needed, for total customization and on-site adaptability. An optional tie bracket and divider panel can be added to provide cord and cable separation between racks.



Part #	Description
49260-MR3	3" Vertical Manager Ring (4-pair cable capacity; 180 rear, 250 front)
49260-MR6	6" Vertical Manager Ring (4-pair cable capacity; 360 rear, 500 front)
49261-BKT	Tie Bracket to secure vertical manager ring to adjacent rack



Vertical D-Rings

Patented Cable Manager Ring. Standard EIA hole spacing allows product to be mounted to any standard rack. Flexible material allows arm to rotate 90° so entire cable bundle can be inserted and removed. Rounded edges prevent damage to cable insulation. 1/4" mounting hole allows for a variety of screws to secure the D-ring to a surface. Creates a structured pathway and allows for open access.



Part #	Description	Cable Capacity - UTP (.187)	Cable Capacity - ScTP (.250)	Cable Capacity - Fiber (3mm)
CMVDR1	Vertical D-ring outside dimensions 5.7"L x 2"W (145mm x 52mm)	96	48	252
CMVDR1S	Vertical D-ring outside dimensions 3.3"L x 2"W (82mm x 52mm)	52	32	132
CMVDR2	Vertical D-ring outside dimensions 5.7"L x 3"W (145mm x 83mm)	192	96	504
CMVDR2S	Vertical D-ring outside dimensions 3.3"L x 3"W (82mm x 83mm)	96	48	252
CMVDRC	Center mounted vertical D-ring for routing cables between two adjacent racks. (Requires 8.25" spacing between the center lines to the adjacent rack's mounting holes). Outside dimensions 5.6"L x 8"W	400	200	1000



Racks & Cabinets - Rack Wire Management



IN-Cabinet Cable Managers

For managing cable within cabinets 27" or wider. Attach to equipment mounting rails. Two mounting bracket options to facilitate mounting to various cabinet configurations. Snap-on covers included. 40 Rack spaces.



Part #	Description	Capacity
CWMPV3440	Duct with side mount bracket, cage nut and screws. Dimensions: 72"H x 3"W x 4"D (1828.8 x 76.2 x 101.6)	96 cables .187 dia.
CWMPV2440	Duct with side mount bracket, cage nut and screw. Dimensions: 72"H x 2"W x 4"D (1828.8 x 50.8 x 101.6)	60 cables .187 dia.
CWMPV2340	Duct with front mount bracket, cage nut and screws. Dimensions: 72"H x 2"W x 3"D (1828.8 x 50.8 x 76.2)	48 cables .187 dia.
CWMPV3340	Duct with front mount bracket, cage nut and screws. Dimensions: 72"H x 3"W x 3"D (1828.8 x 76.2 x 76.2)	72 cables .187 dia.

PatchRunner™ Vertical Cable Management System

High density minimizes area required for network, layout, freeing up floor space. Curved cable management fingers support cable as they transition to the vertical pathway eliminating the need for horizontal managers. Individual fingers can be removed without the use of a tool. Fingers align with rack spaces. Slack management spools organize and manage patch cord slack allowing standardization of patch cords. Optional hinged doors. PRV Series - Manages cable on front and rear of rack. PRVF Series - Manages cable on front of rack only. 45 rack spaces.



Part #	Description	Dim. HxWxD in (mm)
PRV12	Includes 4 PRSP7 slack spools	84 x 12 x 16.4 (2133.6 x 304.8 x 416.6)
PRV8	Includes 4 PRSP7 slack spools	84 x 8 x 16.4 (2133.6 x 203.2 x 416.6)
PRV6	Spools are not included	84 x 6 x 16.4 (2133.6 x 152.4 x 416.6)
PRVF12	Includes 4 PRSP7 slack spools	84 x 12 x 9.7 (2133.6 x 304.8 x 246.4)
PRVF8	Includes 4 PRSP7 slack spools	84 x 8 x 9.7 (2133.6 x 203.2 x 246.4)
PRVF6	Spools are not included	84 x 6 x 9.7 (2133.6 x 152.4 x 246.4)

NetManager™ Horizontal Cable Managers

Removable front cover hinges 180° up or down. Built-in cable retainers. Integral bend radius control throughout all cable pathways. Pass through holes allow front to rear cabling. Mounts to 19" EIA rack or cabinet. Black. One rack space = 1.75" (44.45mm).



Part #	Description	Rack Spaces
NCMH2	Horizontal cable manager, front, 3" x 3" (76.2mm x 76.2mm), rear 2" x 5" (50.8mm x 127mm). Snap-on rear cover.	2
NCMH2-RFC	Replacement front cover for 2 RU horizontal cable manager	2
NCMHF1	Horizontal cable manager, front only, 1.5" x 3" (38mm x 76.2mm) - total width 19" (482.6mm).	1
NCMHF2	Horizontal cable manager, front only, 3" x 3" (76.2mm x 76.2mm) - total width 19" (482.6mm).	2
NCMH1-RFC	Replacement front cover for 1 RU horizontal cable manager	1



NetRunner™ Vertical Cable Management System

Large finger openings accommodate up to 24 Cat 6 cables. Integral cable retainers on the end of each finger to help contain cables within each rack unit. Bend radius align with rack spaces to support cables as they transition to the vertical pathway. Dual hinged covers can be opened 110° to the left or right to provide complete access to the cables inside the vertical pathway. Snap-on cable retainers can be placed on to fingers to help retain cable in channel during installation and maintenance. Includes hinged covers, cable retainers, mounting brackets and #12-24 screws.



Part #	Description	No. of Rack Spaces
WMPV22E	Front and rear vertical manager	22
WMPVHC45E	Front and rear vertical manager - larger cable capacity	45
WMPV45E	Front and rear vertical manager	45
WMPVF22E	Front only vertical manager	22
WMPVHCF45E	Front only vertical manager - larger cable capacity	45
WMPVF45E	Front only vertical manager	45
WMPVCBE	NetRunner™ Center Mount Bracket Kit allows mounting to adjacent racks	n/a
WMPVSMK	NetRunner™ Side Mount Hardware Kit for use with Panduit DR84, NFR84 and NF4PR84 racks	n/a
WMPVHC45EP	End panel for use with WMPVHC45E - Includes 2 panel sections to cover 45 RU on one side	n/a
WMPV45EP	End panel for use with WMPV45E - Includes 2 panel section to cover 45 RU on one side	n/a
WMPV45ERTW	Rack top trough with waterfall creates pathway above rack - For use with CMR19X84 and WMPV45E/WMPVHC45E	n/a

Open-Access™ Horizontal Cable Managers

D-ring managers provide an open and efficient way to manage cable. Patented D-ring design provides flexibility for easy moves, adds and changes. Optional snap-on cover. Pass through holes allow front to rear cabling. Mount to 19" EIA racks and cabinets. Hardware included.



Part #	Type	Description
CMPH1	19" Manager, Front and Rear, 1 RU	D-rings installed on panels. Front D-rings: 1.5"H x 3"D (38.1 x 76.2). Rear D-ring: 1.5"H x 5"D (38.1 x 127). Width 19" (482.6)
CMPH2	19" Manager, Front and Rear, 2 RU	D-rings installed on panel. Front D-ring: 3"H x 3"D (76.2 x 76.2). Rear D-ring: 3"H x 5"D (76.2 x 127). Width 19" (482.6)
CMPHF1	19" Manager, Front Only, 1 RU	D-rings installed on panel. Front D-ring: 1.5"H x 3"D (38.1 x 76.2). Width 19" (482.6)
CMPHHF1	19" Manager, Front Only, 1 RU	D-rings installed on panel. Front D-ring: 1.5"H x 5"D (38.1 x 127). Width 19" (482.6)
CMPHF2	19" Manager, Front Only, 2 RU	D-rings installed on panel. Front D-ring: 3"H x 3"D (76.2 x 76.2). Width 19" (482.6)
CMPHH2	19" Manager, Front Only, 2 RU	D-rings installed on panel. Front D-ring: 3"H x 5"D (76.2 x 127). Width 19" (482.6)
CMPH1C	Optional Covers	Snap-on cover for 1 RU D-ring panels. Width 19.5" (495).
CMPH2C	Optional Covers	Snap-on cover for 2 RU D-ring panels. Width 19.5" (495).



Racks & Cabinets - Rack Wire Management



PATCHLINK™ Horizontal Cable Managers

Lightweight plastic construction provides durability and easy installation. Patented dual hinged cover allows cable access without removing cover. Rounded edges on fingers protect cables from snags and damage. Flexible fingers allows easy installation and removal of cables. Increased finger spacing provides larger area for high performance Cat 6 cables. Pass through holes allow front to rear cabling. Mount to standard 19" EIA racks and cabinets. Covers, #12-24 and M6 mounting screws included.



Part #	Description
WMP1E	Front pathway 3"H x 3"D (76.2 x 76.2) - Rear pathway 2"H x 5"D (50.8 x 127) - Width 19" (482.6) - 2 Rack Spaces
WMPF1E	Front pathway 3"H x 3"D (76.2 x 76.2) - Width 19" (482.6) - 2 Rack Spaces
WMPFSE	Front pathway 1.5"H x 3"D (38.1 x 76.2) - Width 19" (482.6) - 1 Rack Space
WMPH2E	Front pathway 3"H x 3"D (76.2 x 76.2) - Rear pathway 2"H x 5"D (50.8 x 127) - Width 20.2" (513.1) - Includes extended front covers and 2 bend radius clips - 2 Rack Spaces
WMPHF2E	Front pathway 3"H x 3"D (76.2 x 76.2) - Width 20.2" (513.1) - Includes extended front covers and 2 bend radius clips - 2 Rack Spaces
WMPLFSE	Front pathway 1.5"H x 2"D (38.1 x 50.8) - Width 19" (482.6) - 1 Rack Space
WMPLSE	Front pathway 1.5"H x 2"D (38.1 x 50.8) - Rear pathway 1"H x 5"D (25.4 x 127) - Width 19" (482.6) - 1 Rack Space
WMPSE	Front pathway 1.5"H x 3"D (38.1 x 76.2) - Rear pathway 1"H x 5"D (25.4 x 127) - Width 19" (482.6) - 1 Rack Space



Cable Managers

Horizontal rack mount and vertical mount wire managers which provide an efficient method for organizing patch cords and cabling and at the same time maintaining required bend radius. Durable and quality materials. Mounting holes are compatible for open rack or enclosure mounting applications. Come in black powder coat finish.



19" Horizontal Cable Manager

Part #	RMS	Cable Capacity
HC19-01-050	1	50
HC19-02-100	2	100
HF19-01-050	1	50

Vertical Cable Managers

Part #	Cable Capacity	Height
VC-06-050	50 (Each Side)	6'
VF-07-050	50	7'

Double Finger Duct with Cover

Base material is 2mm Aluminum. Paint is electrostatic microfinish, black. Cover and ducts are PVC. Mounting hardware included.



Part #	Dimensions (inches)	Height	Cable Capacity per Duct
VF-04-100	1.6 x 2.4	4'	50
VF-07-100	1.6 x 2.4	6'	50
VF-07-140	2.4 x 3.2	7'	70

Cable Management Panels & Rings

Designed for 19" cabinets. Material is sheet steel. Black.



Part #	Description
687844	1U, with 5 hooks
688188	2U, with 5 hooks
677845	1U, panel trunking type with cover
678189	2U, panel trunking type with cover
169950	Rack mount cable manager
676844	Cable management ring, 20 rings per bag

Cable Organizer

Adhesive backing or screw on (screws included).



Part # 162548

HellermannTyton

Enhanced Horizontal Wire Managers

Protects cable and maintain its integrity on a standard 19" rack. High quality injection molded wire managers with a one-inch minimum radius which guards against extensive bending of the cables and increases transmission reliability. Snap-on, injection-molded covers hing down for easy access to patch cords in front of rack. UL94V-0 rated for flammability.

Part #	Description
EHWMN1	One rack single-sided horizontal wire manager - 1.75" x 3" front
EHWMN2	One rack dual-sided horizontal wire manager - 1.75" x 3" front and 1.75" x 6" back
EHWM1	Two rack single-sided horizontal wire manager - 3.5" x 3" front
EHWM2	Two rack dual-sided horizontal wire manager - 3.5" x 3" front and 3.5" x 6" back

Vertical Wire Management Brackets

It can be mounted on the side of the relay rack as well as between two adjacent racks. Equipped with feed-through holes to move cable from back to front and vice versa. The 4" x 4" duct on the back allows for a smooth transition from HellermannTyton's Lightguide Fiber Optic Protection System's 4" x 4" channel to the relay rack. All designs of wire management brackets perform with the wire management bracket hinge. This hinge allows the cover to remain with the manager. It easily snaps onto the cover and the channel. Once assembled, the hinge permits the cover to open like a door, protecting the wire and cable. Black.



Part #	Description	Dimensions
VWMDC4X5BK	Dual sided, center mount vertical wire mgr.	35" high 4" x 5" (front) 35" high 4" x 5" (back)
VWMDC4X5BK7	Dual sided, center mount vertical wire mgr.	84" high 4" x 5" (front) 84" high 4" x 5" (back)
VWMDS4X5BK	Dual sided, side mount vertical wire mgr.	35" high 4" x 5" (front) 35" high 4" x 5" (back)
VWMDS4X5BK7	Dual sided, side mount vertical wire mgr.	84" high 4" x 5" (front) 84" high 4" x 5" (back)

Racks & Cabinets - Rack Wire Management

HellermannTyton

SIGNAMAX
CONNECTIVITY SYSTEMS

Horizontal Wire Management Brackets

Designed to provide cable management horizontally on the front and back of a rack. The single sided bracket provides a channel for only the front or the back on a relay rack and the dual sided bracket provides a channel for both the front and back on a relay rack. The two styles are offered for either one or two rack spaces. Extended length covers. This hinge allows the cover to remain with the bracket. Once assembled, the hinge permits the cover to be opened down and act as a "shelf" for easy cable organization. Black.



Part #	Description	Dimensions	Rack Units
WMB1	Single sided horizontal wire manager	3" x 3" (front)	2
WMB2	Dual sided horizontal wire manager	3" x 3" (front), 2" x 4" (back)	2
WMBN1	Single sided horizontal wire manager	1.5" x 2" (front)	1
WMBN2	Dual sided horizontal wire manager	1.5" x 2" (front), 1.5" x 4" (back)	1

Cable Management Panels

Clean and simple solution to eliminate cable clutter on a relay rack. Equipped with metal or plastic hangers, these 19" panels provide fast and easy organization.



Part #	Description	Hangers	Rack Space
TCMP-2	Horizontal Cable Management Panel - Black	24 plastic clips and three metal rings	2
THCM1	Horizontal Cable Manager - Black	Five plastic rings	1
THCM2	Horizontal Cable Manager - Black	Five plastic rings	2
THCO1	Horizontal Cable Organizer - Black	Five metal rings	1
THCO2	Horizontal Cable Organizer - Black	Five metal rings	2

SIGNAMAX
CONNECTIVITY SYSTEMS

Cable Management Ring Brackets

Ring brackets can be mounted to the front or rear of a rack, to provide both vertical and horizontal cable management. Brackets can be specified in either one or two rack-space sizes, and are offered in 3 and 6-inch depths for accommodating various cable bundle sizes. Blank filler panels are used in the rack to fill-in open rack spaces that are not utilized.



10-32 Rack Mount Hardware - Package of 100

Part # RMH-1032

Blank Filler

Part #	Dimensions inches (W x H)
BFP-19175	19 x 1.75
BFP-19350	19 x 3.50
BFP-19525	19 x 5.25
BFP-19700	19 x 7.00
BFP-19875	19 x 8.75

Cable Management Ring Brackets (cont.)

Cable Management Ring Brackets

Part #	Description	Rack Spaces
CMR-175-A	Ring Bracket with 1.5"H x 3"D Horizontal Ring on 1.75"H Rack Mount Bracket	1
CMR-175-C	Ring Bracket with 1.5"H x 6"D Horizontal Ring on 1.75"H Rack Mount Bracket	1
CMR-175-D	Ring Bracket with 2.5"H x 6"D Horizontal Ring on 1.75"H Rack Mount Bracket	1
CMR-350-A	Ring Bracket with 1.5"H x 3"D Horizontal Ring on 3.50"H Rack Mount Bracket	2
CMR-350-B	Ring Bracket with 2.5"H x 3"D Horizontal Ring on 3.50"H Rack Mount Bracket	2
CMR-350-C	Ring Bracket with 1.5"H x 6"D Horizontal Ring on 3.50"H Rack Mount Bracket	2
CMR-350-D	Ring Bracket with 2.5"H x 6"D Horizontal Ring on 3.50"H Rack Mount Bracket	2

Rack Mount Patch Cord and Cable Management Panels

Provides a simple means of organizing and managing cables, either on the front or rear of an equipment rack or enclosure. All panels allow management and routing of both bundled and individual cables. Cable management panels are available in 1.75 inch high (1 rack space) and 3.50 inch (2 rack spaces) and are supplied with mounting hardware.



Part #	Description	Rack Spaces
CDP-175	Panel with 1.5"H x 4"D Duct on Front	1
CDP-175-A	Panel with 1.5"H x 4"D Duct on Front and Back	1
CDP-350	Panel with 3"H x 4"D Duct on Front	2
CDP-350-A	Panel with 3"H x 4"D Duct on Front and Back	2
CMP-175	Panel with (2) 3" x 3" Vertical Distribution Rings and Routing Clips	1
CMP-175-A	Panel with (5) 1.75" x 3" Horizontal Distribution Rings	1
CMP-175-AD	Panel with (5) 1.75" x 3" Horizontal Distribution Rings and 1.5"H x 4"D Duct on Back	1
CMP-175-D	Panel with (2) 3" x 3" Vertical Distribution Rings, Routing Clips and 1.5"H x 4"D Duct on Back	1
CMP-350	Panel with (2) 3" x 3" Vertical Distribution Rings, (4) 3" x 3" Horizontal Distribution Rings and Routing Clips	2
CMP-350-A	Panel with (5) 3" x 3" Horizontal Distribution Rings	1
CMP-350-AD	Panel with (5) 3" x 3" Horizontal Distribution Rings and 3"H x 4"D Duct on Back	2
CMP-350-D	Panel with (2) 3" x 3" Vertical Distribution Rings, (4) 3" x 3" Horizontal Distribution Rings, Routing Clips and 3"H x 4"D Duct on Back	2

Racks & Cabinets - Hardware & Misc.



CL Series Cable Ladders and Accessories

Ladder sections individually boxed with handles for ease of transport. Compatible with most popular brands and accessories of cable ladders. Works on both new and existing installations. Highly scratch resistant, double coated in black powder coat. A full line of hardware and accessories available.



Ladder Sections

Part #	Description
CLB-6	6' long x 12" wide straight section, black
CLB-6-12	6' long x 12" wide straight section, black, 12 in pack
CLB-10	10' long x 12" wide straight section, black
CLB-10-12	10' long x 12" wide straight section, black, 12 in pack

90 Degree Horizontal Bend

90 degree horizontal bend. 12" wide. Color is black.

Part # CLB-90HB

Corner Radius Sections

Part #	Description
CLB-VI90	90 degree vertical inside bend, 12" wide, black
CLB-VI90-4	90 degree vertical inside bend, 12" wide, black, 4 in pack
CLB-VO90	90 degree vertical outside bend, 12" wide, black
CLB-VO90-4	90 degree vertical outside bend, 12" wide, black, 4 in pack

MK Ladder Adaptor

Ladder adaptor accommodates most cable ladders. Includes mounting hardware and J-bolts. Required only when mounting ladder parallel to rack. TIA/EIA compliant.



Part # MK-LA

SRSR Series Rotating Sliding Rail System

Pulls out and rotates for equipment servicing. Simplifies equipment installation in cabinet. Shortens installation and service time. Available in 19" and 23" useable depths. Available from 12 space (21") to 24 space (42"). Integral cable management system provided. Locks in place at 0°, 60° and 90° positions for easy installation and servicing. Ball bearing slides allow smooth rollout. Locks closed with included hardware. Up to 300 pound weight capacity, depending on model.



Part #	Description	Useable Depth
SRSR-2	2 slide 150 lb. capacity	19"
SRSR-4	4 slide 300 lb. capacity	19"
SRSR-X	4 slide 200 lb capacity	23"

Additional Mounting Brackets

Use PB-5A brackets to mount MAP power strips in AX-S and SLIM-5 series racks, or to the rackrail of any rack. To mount strips in DWR series wall racks, use PB-DWR brackets.



Part #	Description
PB-5A	Brackets to mount MAP power strips on rear rackrail (pair)
PB-DWR	Brackets to mount MAP power strips in DWR wall racks (pair)



Utility Panel

Give your drill a rest - these panels are pre-punched with plenty of slots. This economical panel is capable of mounting everything from electrical boxes to power strips. 16-gauge flanged steel construction, black powder coat finish, occupies 1 rack space (1 3/4"). TIA/EIA compliant.



Part # UP1

Casters

Heavy duty casters bolt directly to the bottom of Slim 5 racks or can be concealed in a skirted base. Available in locking and non-locking. Casters add 3 3/4" to overall cabinet height.



Part #	Description
5W	Set of 4 casters
5WL	Set of 4 casters (2 locking)
CBS-5	Skirted base with 4 casters (non-locking)

Track Leveler

Supports and levels service tracks.

Part # TRACKL

RIB Series Riser Bases

Time-saving and practical, the RIB Series bases are 2 1/2" high risers which allow you to perform field rough-in procedures prior to the arrival of your racks. Handy as a lower cable chase for passing cables between racks in multi-bay applications, RIB bases feature 1/8" thick fully welded construction and an attractive black powder coat finish. Custom width, depth, and height RIB bases are also available.



Part #	Description	Accommodates
RIB-1-MRK-26	1 bay riser base	MRK 26" deep racks
RIB-1-MRK-31	1 bay riser base	MRK/VRK/VMRK 31" deep racks
RIB-1-WRK-27	1 bay riser base	WRK 27" deep racks
RIB-1-WRK-32	1 bay riser base	WRK 32" deep racks
RIB-2-MRK-26	2 bay riser base	MRK 26" deep racks
RIB-2-MRK-31	2 bay riser base	MRK/VRK/VMRK 31" deep racks
RIB-2-WRK-27	2 bay riser base	WRK 27" deep racks
RIB-2-WRK-32	2 bay riser base	WRK 32" deep racks
RIB-3-MRK-26	3 bay riser base	MRK 26" deep racks
RIB-3-MRK-31	3 bay riser base	MRK/VRK/VMRK 31" deep racks
RIB-3-WRK-27	3 bay riser base	WRK 27" deep racks
RIB-3-WRK-32	3 bay riser base	WRK 32" deep racks
RIB-4-MRK-26	4 bay riser base	MRK 26" deep racks
RIB-4-MRK-31	4 bay riser base	MRK/VRK/VMRK 31" deep racks
RIB-4-WRK-27	4 bay riser base	WRK 27" deep racks
RIB-4-WRK-32	4 bay riser base	WRK 32" deep racks
RIB-5-MRK-26	5 bay riser base	MRK 26" deep racks
RIB-5-MRK-31	5 bay riser base	MRK/VRK/VMRK 31" deep racks
RIB-5-WRK-27	5 bay riser base	WRK 27" deep racks
RIB-5-WRK-32	5 bay riser base	WRK 32" deep racks

Racks & Cabinets - Hardware & Misc.



Raised-Floor Riser Feet and Support Angles

For applications such as those in computer rooms with 12" raised floors, VFEET support feet can be used to raise an entire RIB base up to floor level. To support floor tiles in situations utilizing a RIB/VFEET system, use raised-floor supports.



Raised Floor Support Angles

Part #	For Use With
ANGLE-1	RIB-1-MRK-26/31
ANGLE-2	RIB-2-MRK-26/31
ANGLE-3	RIB-3-MRK-26/31
ANGLE-4	RIB-4-MRK-26/31
ANGLE-5	RIB-5-MRK-26/31
WANGLE-1	RIB-1-WRK-27/32
WANGLE-2	RIB-2-WRK-27/32
WANGLE-3	RIB-3-WRK-27/32
WANGLE-4	RIB-4-WRK-27/32
WANGLE-5	RIB-5-WRK-27/32

Riser Feet

Part #	Description
VFEET-1-12	RIB-1 riser feet
VFEET-2-12	RIB-2 riser feet
VFEET-3-12	RIB-3 riser feet
VFEET-4-12	RIB-4 riser feet
VFEET-5-12	RIB-5 riser feet

Caster Base

With a 1300 lb. capacity, these caster bases are equipped with heavy duty non-locking 3" swivel wheels. Each base comes with its wheels preinstalled, fits inside rack, and raises total rack height only 3/4". Caster base works with LF leveling feet. Note: Inner platform base and caster base do not fit VMRK-54 and VRK-44-31H racks.



Part #	Type	Fits
BS-MRK-26	Inner Platform Base	MRK 26" deep
BS-MRK-31	Inner Platform Base	MRK 31" deep
BS-WRK-27	Inner Platform Base	WRK 27" deep
BS-WRK-32	Inner Platform Base	WRK 32" deep
CBS-MRK-26	Caster Base	MRK 26" deep
CBS-MRK-31	Caster Base	MRK 31" deep
CBS-WRK-27	Caster Base	WRK 27" deep
CBS-WRK-32	Caster Base	WRK 32" deep
CBS-WRK-31	Caster Base	WRK 31" deep

Rack Base Templates

Use these handy bottom templates for pre-installation of floor anchor bolts prior to the arrival of the racks. Conveniently keyed to interlock, use two and "leapfrog" them to layout entire bays of racks.



Part #	Description
MRK-TEMP-26	Bottom template for MRK-XX-26
MRK-TEMP-31	Bottom template for MRK-XX-31
WRK-TEMP-27	Bottom template for WRK-XX-27
WRK-TEMP-32	Bottom template for WRK-XX-32



Seismic Floor Anchor Brackets

When properly installed, seismic floor anchor kits bring any WRK, MRK, VRK, VMRK or ERK series enclosure to Zone 4 and Seismic Use Group III upper floor essential equipment rating.

Part #	Fits
ERK-Z4	ERK Series
MRK-Z4	MRK, VMRK Series
VRK-Z4	VRK Series
WRK-Z4	WRK Series

Copper Buss Bars

Solid copper buss bars are 1/8" thick and threaded 10-32. New 1" wide 44 space version available. 2" wide version also available in 12 or 40 space models. Supplied mounting hardware includes nylon isolation washers, bolts and nuts.



Part #	Racking Height	Width	QTY
BB-12	21" (12 space)	2"	1 bar
BB-40	70" (40 space)	2"	1 bar
BB-44-1	77" (44 space)	1"	1 bar

Document Pocket

Store wiring diagrams, schematics, and other vital documents in this convenient steel holder. Fits rear doors of all Middle Atlantic racks. Flush mounting studs included, black powder coat finish.



Part # DOC

Leveling Feet

Adjustable leveling feet fit steel cabinets (except for VRK series). Hex drive allows for adjustment. Leveling feet also work with caster bases for MRK and WRK series racks. Set of four.



Part # LF

Door Latch

Can be user-installed in place of a keylock on all Middle Atlantic doors.



Part #	Description
ACC-KEY	Additional set of keys for KYLK
KYLK	User installed UD keylock
LATCH	User installed UD latch

Ganging Hardware

Time-saving ganging hardware provides easy field alignment and joining of multi-bay enclosures. Available hardware includes drift pins, 1/2" magnetized sockets and enough 5/16" flange nuts and bolts to gang up to 10 racks.



Part #	Description
DRIFT	Set of two drift pins
GANG-10	5/16" nuts/bolts to gang 10 racks
MAG-1/2	Set of two 1/2" magnetic sockets

Racks & Cabinets - Hardware & Misc.



Captive Washer Screws

This specially designed washer-head screw with pre-assembled nylon washer speeds assembly while providing a clean, professional appearance. Heat treated for strength and oiled to resist rust. Contains 3/4" long screws with 10-32 threads. Comes in a reusable plastic jar for convenience.



Part # HW500

Truss-Head Hardware

These HP series rackscrews are 3/4" long with 10-32 threads and feature an attractive Phillips truss-head for a clean, modern appearance. All screws have a self-guiding pilot point, including factory-installed nylon washers for convenience and are heat-treated for strength and to resist head stripping.



Part #	Finish	QTY
HP	Black	100 pc.
HPS	Black	25 pc.
HP500	Black	500 pc. in a reuseable jar

Cage Nut Hardware

Cage nuts fits WRK, MRK and DRK cage-nut style rackrail and accepts 6mm rackscrews to accommodate slide-out servers.



Part #	Description
CN6MM-100	100 pc. 6mm cagenuts
HP-6MM	100 pc. 6mm Phillips head rackscrews

12-24 Hardware

Primarily used in telecommunications and data, these 5/8" long 12-24 threaded screws are heat-treated to prevent head stripping. Black oxide finish, complete with nylon washers. 100 pieces.



Part # HP-24

SRS Series 19" Sliding Rail System

System extends a full 19", making it ideal for smaller mill-work and in-wall installations. Up to a 300 lb. weight capacity. Hardware included to lock unit closed. Sizes range from 8 to 20 spaces. Triple-hinged, full-width cable carrier offered for effective cable management. Standard front (from 8 to 20 spaces) and rear (7 space) 10-32 threaded rackrail with marked rackspace increments to speed equipment mounting. System pulls out a full 19", providing rear access to equipment with shallow depths. xx = number of useable spaces, from 8 to 20.



Part #	Description
SRCC	Optional cable carrier
SRS2-xx	2 slide 150 lb. capacity
SRS4-xx	4 slide 300 lb. capacity

The Claw

The unique dual-size "claw" configuration of this versatile wall-mount cable hanger provides efficient storage for all cables large and small. Convenient side trays hold small items. 16" wide x 3 1/2" deep, black powder coat finish.



Part # CLAW



Rack Rulers

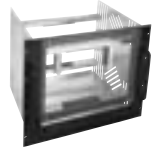
A genuinely handy tape measure incremented in both rack spaces (red) and inches (black) down to 1/32" scale. Measuring 2" wide by 96" (8 feet) long, its Mylar-coated retracting steel tape is housed in a tough ABS case with a thumb lock and belt clip.



Part #	Description
DARULER	Datatables, charts and contact wiring
RULER	Audio tables, charts and pinouts

Computer Monitor Rackmount

Equipped with a hinged front access door and plexiglass front panel, our RM-MM computer monitor rackmount features 4 adjustable clamps which accommodate and secure most 14" to 17" computer monitors. The faceplate includes handles for easy mounting and is finished in black textured powder coat, while the chassis is finished in a clear zinc plating. Interior dimensions are 16 1/2" wide x 14 1/2" deep x 15 3/8" high. TIA/EIA compliant. Racking height is 15 3/4" (9 spaces).



Part # RM-MM

Fans

Featuring smooth, ball bearing design, 115V fans come in 4 1/2" and 10" models. The QFAN quiet fan includes a black guard and is great for minimizing noise. New AXS-FAN features a slim design for mounting in AXS Series racks. Hardware and cord are included with each unit.



Part #	Size	Free Air db Rating	Free Air CFM
FAN	4 1/2"	39 dBA	95
FAN-10	10"	46 dBA	550
QFAN	4 1/2"	30 dBA	50
BMF-FAN10	10"	60 dBA	825



Telecommunication Rack Grounding Products

Part #	Description
TRGB19	Ground Bar, 19" long, 1 RU, mounts to vertical channels of the Telecommunication Equipment Rack and is used as a grounding bus. Tinned copper #6-32 and 1/4-20 threaded screw holes. Includes hardware.
TRGB191	Ground Bar, 19" long, 1 RU, mounts to vertical channels of the Telecommunication Equipment Rack and is used as a grounding bus. Tinned copper #6-32 and 1/4-20 threaded screw holes. Includes hardware.
TRGB23	Ground Bar, 15" long, mounts to the top of the 23" Telecommunications Equipment Rack and is used as a grounding bus. Tinned copper, #6-32 and 1/4-20 threaded screw holes. Includes hardware.
TRGB231	Ground Bar, 23" long, 1 RU, mounts to vertical channels of the Telecommunication Equipment Rack and is used as a grounding bus. Tinned copper, #6-32 and 1/4-20 threaded screw holes. Includes hardware.
TRGK672	Ground Kit - Used to ground individual rack to building network ground. #6 AWG insulated stranded copper 72"L. Includes external lock washers, 1/4-20 screws, H-Tap and cover, lug and anti-oxidizing paste. Accommodates Building Network Ground wire from #1/0-#6 AWG.
TRGKE696	Equipment Ground Kit - Mounts to vertical channel of the rack and is used as a connection between equipment jumpers and rack ground bar. #6 tinned solid copper wire 96"L. Includes #12-24 screws, cable clamps, 1/4-20 screws, external lock washers, lug and anti-oxidizing paste.
TRGKJ1024	Equipment Ground Jumper Kit - Used to ground equipment to TRGKE696. #10 AWG insulated stranded copper 24"L. Includes H-Tap, cover, ring terminal and anti-oxidizing paste.

Racks & Cabinets - Hardware & Misc.



Telecommunication Rack Grounding Products (cont.)

Part #	Description
TRGKJ4120	Equipment ground jumper kit is used to ground equipment to the building network ground, TRGKE696, or directly to the rack. Cable is #4AWG insulated stranded copper 120" long. Includes #12-24 screws, cable clamps, H-Tap and cover, and anti-oxidizing paste.

Mounting Screws

Can be used with all Panduit® cable management and patch panel products in addition to any industry standard 19" or 23" components. Aluminum racks feature individually printed rack space numbering. Aluminum racks equipped with pre-installed hardware for quick assembly. Double-sided #12-24 EIA universal mounting hole spacing. #12-24 mounting screws, quantity is 100.

Part # S1224-C

Hinged Wall Brackets

Mount to wall or standard 19" racks. Cable tie slots. Panel rotates from one side for easy access to cabling. Includes write-on labeling area. Accept 19" patch panels, horizontal managers and equipment.



Part #	Dim. HxWxD inches (mm)	Load Rating	No. Rack Spaces
WBH1	1.7 x 20.0 x 6.1 (43.2 x 508 x 154.9)	10 lbs.	1
WBH2	3.5 x 20.0 x 6.1 (88.9 x 508 x 155.9)	20 lbs.	2
WBH3	5.2 x 20.0 x 6.1 (132.1 x 508 x 154.9)	30 lbs.	3
WBH4	7.0 x 20.0 x 6.1 (177.8 x 508 x 154.9)	40 lbs.	4
WBH2E	3.5 x 20.4 x 15.8 (88.9 x 518.2 x 401.3)	20 lbs.	2
WBH4E	7.0 x 20.4 x 15.8 (177.8 x 518.2 x 401.3)	40 lbs.	4
WBH6E	10.5 x 20.4 x 15.8 (266.7 x 518.2 x 401.3)	60 lbs.	6



Caster Wheels

Rotational type. Load capacity per caster = 551 lbs static load. Four each, 2 with brake and 2 without.



Part # 680404



M6 Cage Nut Set

Includes M6 (6 mm) Phillips Screw and Cup Washer.



Part # 680000

Server Cabinet Ventilation Unit

On/Off Switch. 6 Fans. Thermostat for temperature control. Promotes heat dissipation. Air circulation rate: 3.2 meters per 3 minutes. Noise: 47 dBm. CE Certified. Complete with power cords. Material: sheet steel.



Part # 686002

19" L Support Bracket



Part #	Description
680060	13 in. deep, silver
680080	19.25 in. deep, silver



Hinged Wall Mount Brackets

Designed for mounting one or more 19-inch panels and have a 6-inch standoff depth. Constructed from 16-gauge steel with a black polyurethane finish. Brackets have cable access holes on both the rear and sides to allow a variety of cable access configurations. Can be mounted for either right or left hand swing.



Part #	Dimensions 19"W X 6"D	Rack Spaces
HWB-175	1.75"H	1
HWB-350	3.50"H	2
HWB-525	5.25"H	3
HWB-700	7.00"H	4
HWB-875	8.75"H	5

NOTES



