

# Section 6: Data Communications

Sub-Section	Page
Data Communications .....	184



Descriptive information herein supplied directly by individual manufacturers. Not responsible for opinion-oriented information or typographical errors. Not all products may be in stock or available to all EDGE members. Price is subject to change without notice. Restrictions may apply. We reserve the right to limit quantities to stock on hand.

# Data Communications



## GigaFlex PS5E Module

A punch down UTP connector based on a patented Encapsulated Lead Frame technology ensuring excellent long term reliability as well as extremely stable transmission performance. Exceeds all requirements specified in the Category 5e standard. All performance parameters including NEXT, FEXT, Attenuation and Return Loss have been set to guarantee transmission performance up to 160 MHz and a data-rate of up to 1.2 Gb/s. It can also be mixed and matched with a wide variety of MDVO adapters, boxes and patch panels to suit any installation configuration. A keystone-style is also available for terminating UTP cables into keystone-style mounting hardware.

Part #	Color	Description
AX101045	Almond	MDVO-STYLE, T568A/B
AX101046	White	MDVO-STYLE, T568A/B
AX101047	Black	MDVO-STYLE, T568A/B
AX101048	Orange	MDVO-STYLE, T568A/B
AX101049	Red	MDVO-STYLE, T568A/B
AX101050	Yellow	MDVO-STYLE, T568A/B
AX101051	Green	MDVO-STYLE, T568A/B
AX101052	Blue	MDVO-STYLE, T568A/B

## GigaFlex PS6+ Module

A punch down UTP connector based on a patented Encapsulated Lead Frame technology ensuring excellent long-term reliability as well as extremely stable transmission performance. Exceeds all parameters specified in the Category 6 standard. All performance characteristics have been set to guarantee transmission performance up to 300 MHz and a data-rate of up to 4.8 Gb/s. It can also be mixed and matched with a wide variety of MDVO adapters, boxes and patch panels to suit any installation configuration. A keystone-style is also available for terminating UTP cables into keystone-style mounting hardware. Also available is the GigaFlex PS6+ Module, Clipsal-style which is fully compatible with Clipsal faceplates and mounting hardware.

Part #	Color	Description
AX101064	Almond	MDVO-STYLE, T568A/B
AX101065	White	MDVO-STYLE, T568A/B
AX101066	Black	MDVO-STYLE, T568A/B
AX101067	Orange	MDVO-STYLE, T568A/B
AX101068	Red	MDVO-STYLE, T568A/B
AX101069	Yellow	MDVO-STYLE, T568A/B
AX101071	Blue	MDVO-STYLE, T568A/B

## Belden IBDN System 10GX

10GX Modules and 10GX Patch Panels

### 10GX Module

Augmented Category 6. MDVO-Style, T568A/B. A revolutionary punch down UTP connector designed to be used within the new Belden IBDN System 10GX. Designed to work in existing hardware including the Flex Modular Patch Panel and MediaFlex Outlet Series. It can also be mixed and matched with a wide variety of adapters and boxes to suit practically any installation configuration for workstation outlet, consolidation point and telecommunications closet applications.

Part #	Color
AX102269	Gray
AX102271	White
AX102272	Black
AX102274	Red
AX102275	Yellow
AX102276	Green
AX102277	Blue
AX102562	Ivory

## Belden IBDN System 10GX (cont.)

### 10GX Patch Panel

A fully loaded patch panel designed to be used within the Belden IBDN System 10GX. Features the revolutionary 10GX Module, specifically designed to meet the difficult challenges of 10 Gb/s transmission. Available in high-density options such as 24 ports in 1U or 48 ports in 2U, but the phenomenal ANEXT performance of the 10GX Ultra high-density patch panel supporting 49 ports in 1U.

Part #	Description
AX102488	Ultra High-Density Patch Panel, Augmented Category 6. 1U, 48-port, Titanium.
AX102293	Patch Panel, Augmented Category 6. 1U, 24-port, Titanium
AX102296	Patch Panel, Augmented Category 6. 2U, 48-port, Titanium.

### 10GX Modular Cords

4-pair 23 AWG UTP modular cords designed to be used within the Belden IBDN System 10GX. Featured part number is Gray. Also available in Blue, White, Green, Red and Yellow.

### 10GX Modular Cord, 4-Pair, 23 AWG Solid, T568A/B-T568A/B, CMR

Part #	Description
AX360027	2.1 m (7ft)
AX360028	3.0 m (10 ft.)
AX360029	4.6 m (15 ft.)
AX360030	7.6 m (25 ft)

### 10GX Pigtail, 4-Pair, 23 AWG Solid, T568A-Open, CMR

Part #	Description
AX360265	4.6 m (15 ft)
AX360266	7.6 m (25 ft)
AX360267	10.6 m (35 ft)
AX360268	15.0 m (50 ft)

### 10GX Pigtail, 4-Pair, 23 AWG Solid, T568B-Open, CMR

Part #	Description
AX360269	4.6 m (15 ft)
AX360270	7.6 m (25 ft)
AX360271	10.6 m (35 ft)
AX360272	15.0 (50 ft)

### 10GX Cables

4-Pair 23 AWG UTP, 305 m (1000 ft) cables. Spool. Designed to be used within the Belden IBDN System 10GX.

### 10GX Cable, Bonded Pairs

Part #	Description	Color
24826395	10GX32 Cable. CMR.	White
24826995	10GX32 Cable. CMR.	Blue
24827395	10GX33 Cable. CMP.	White
24827995	10GX33 Cable. CMP.	Blue
24828095	10GX44 Cable. LSZH.	Purple
24822395	10GX66 Cable. Limited Combustible.	White* (*DuPont™ certified limited combustible cable)

### 10GX Cable, Nonbonded-pairs

Part #	Description	Color
24816395	10GX12 Cable. CMR.	White
24816995	10GX12 Cable. CMR.	Blue
24817395	10GX13 Cable. CMP.	White
24817995	10GX13 Cable. CMP.	Blue
24818095	10GX24 Cable. LSZH.	Purple
24812395	10GX16 Cable. Limited Combustible.	White* (*DuPont™ certified limited combustible cable)



# Data Communications



## PS5E HD Patch Panel

The Universal PS5E HD Patch Panels Series includes a variety of product styles, sizes and wiring configurations. PS5E HD Patch Panels are robust and installer-friendly products by design, combining punch down connectors with standard modular jacks. They are available in both BIX and 110 Insulation Displacement Connection (IDC) options. A color-coded icon labeling system can be used to tag each patch panel port and simplify network management (ordered separately). PS5E HD Patch Panels offer Category 5E performance.

Part #	Description	Color	Description
AX100464	PS5E HD-BIX Patch Panel	Gray	1U, 24-port, T568A/B
AX100465	PS5E HD-BIX Patch Panel	Black	1U, 24-port, T568A/B
AX100472	PS5E HD-BIX Patch Panel	Gray	2U, 48-port, T568A/B
AX100473	PS5E HD-BIX Patch Panel	Black	2U, 48-port, T568A/B
AX100452	PS5E HD-BIX Patch Panel	Black	1U, 24-port, T568B/A
AX100454	PS5E HD-BIX Patch Panel	Black	2U, 48-port, T568B/A

## PS5E BIX Patch Panel

The PS5E BIX Patch Panel is a medium density panel, 24-port in 2 rack space units, for easier installation and cable management than high density panels. The PS5E BIX Patch Panel is a robust and installer-friendly product by design, combining BIX punch down connectors with standard modular jacks. The patch panel features built-in wire management to secure cable bundles and to control and maintain patch cord bend radius. A color-coded icon labeling system can be used to tag each patch panel port and simplify network management (ordered separately). The PS5E BIX Patch Panel offers Category 5E performance.

Part #	Color	Description
AX100505	Gray	2U, 24-port, T568A-ISDN
AX100506	Black	2U, 24-port, T568A-ISDN

## Flex Patch Panel

Flex Patch Panels provide a flexible and versatile termination solution for telecommunications room rack-mounted installations. The panels can be custom configured in the field to suit practically any particular configuration. Flex Patch Panels are compatible with GigaFlex and EZ-MDVO modules as well as MDVO-style Multimedia modules. Modules are ordered separately.

Part #	Color	Description
AX101571	Gray	1U, 24-port
AX101456	Black	1U, 24-port
AX101573	Gray	2U, 48-port
AX101458	Black	2U, 48-port

## PS5E HD Patch Box

The PS5E HD Patch Boxes are available in BIX and 110 configurations and hold one 12-port universal connector module in a compact and robust metal enclosure. The patch box features a hinged cover and support brackets to secure cables and maintain patch cord bend radius. A color-coded icon labeling system can be used to tag each patch panel port and simplify network management (ordered separately). All performance parameters, including NEXT, Attenuation and Return Loss are designed to meet the Category 5E Cabling standard.

## PS5E HD Patch Box

Part #	Color	Description
AX100491	Black	12-port, T568B/A
AX100283	Gray	12-port, T568A/B
AX100284	Black	12-port, T568A/B

## PS5E HD Patch Box (cont.)

### MDVO Patch Box

An MDVO Patch Box is also available that can be custom configured in the field using up to 12 GigaFlex, EZ-MDVO or MDVO Multimedia Modules. Modules are ordered separately.

Part #	Color	Description
AX100281	Gray	12-port
AX100282	Black	12-port

## PS5E HD-BIX Universal Connector Module

The PS5E HD Universal Connector Module is a 12-port UTP Module with a BIX or 110 termination interface that is used as a replacement module in the PS5E HD Patch Panels and Patch Boxes.

## PS5E BIX Connector Module

The PS5E BIX Connector Module is a 2-port UTP Module with BIX termination interface that is used as a replacement module in the PS5E BIX Patch Panel 24-port.

Part #	Description
AX100458	PS5E HD-BIX Universal Connector Module, Universal wiring 12-port, T568A/B
AX100599	2-port, T568A-ISDN
AX100461	PS5E HD-110 Universal Connector Module, Universal wiring 12-port, T568B/A

## Color-Coded Icon Kit

Color-Coded Icons can be used to tag each outlet port as data or voice and simplify network management. The snap-on icons can be used with PS5E HD Patch Panels, PS5E HD Patch Boxes, PS5E BIX Patch Panels, MediaFlex GigaFlex Inserts, PS5E DVO Workstation Outlets. They cannot be used with any of the Interface or MDVO plates, adapters or boxes.

Part #	Color	Description
AX100435	Gray	12 data, 6 voice, 6 blank icons
AX100436	Almond	12 data, 6 voice, 6 blank icons
AX100437	White	12 data, 6 voice, 6 blank icons
AX100438	Black	12 data, 6 voice, 6 blank icons
AX100439	Orange	12 data, 6 voice, 6 blank icons
AX100440	Red	12 data, 6 voice, 6 blank icons
AX100441	Yellow	12 data, 6 voice, 6 blank icons
AX100442	Green	12 data, 6 voice, 6 blank icons
AX100443	Blue	12 data, 6 voice, 6 blank icons
AX100444	Purple	12 data, 6 voice, 6 blank icons
AX100445	Brown	12 data, 6 voice, 6 blank icons

## Clear Plastic Identification Tubes

The Clear Plastic ID Tubes are new and improved plastic tubes designed to be used primarily in conjunction with the PS5E HD BIX and 110 Patch Panels and Patch Boxes. The tubes are made of clear fire-retardant plastic, with double-sided adhesive on one side. They are available in three different lengths for easy compatibility with 4, 6 or 12-port openings of the patch panels. They are sold in bags of 100 units only. The bags contain 100 ID tubes and 100 white labels.

Part #	Length	Description
AX101094	112 mm (4.4)	MDVO Patch Box
AX101093	188 mm (7.4 in.)	HDBIX/110
AX101095	79 mm (3.1 in.)	MDVO, 4-port



# Data Communications



## MediaFlex Faceplate Kit

MediaFlex Plates and Inserts snap together to create a full line of modular workstation outlets. This product line, called the MediaFlex Modular Outlet Series, has been designed with the help of industrial designers as well as other professionals in the industry in order to combine flexibility, ease of use and high-tech aesthetics for work area installations. Even though the MediaFlex series is a modular outlet system, ease and flexibility in ordering and inventory management are also considered with the offering of pre-configured faceplate kits (includes plate, flush MDVO-style inserts, filler inserts, MDVO blank, labeling window covers, labeling paper and all necessary mounting screws).

Part #	Color	Description
AX101778	Gray	2-port, Flush
AX101779	Almond	2-port, Flush
AX101780	Elec. White	2-port, Flush
AX101781	Black	2-port, Flush
AX102621	White	2-port, Flush
AX102566	Ivory	2-port, Flush
AX101782	Gray	4-port, Flush
AX101783	Almond	4-port, Flush
AX101784	Elec. White	4-port, Flush
AX101785	Black	4-port, Flush
AX102622	White	4-port, Flush
AX102567	Ivory	4-port, Flush
AX101786	Gray	6-port, Flush
AX101787	Almond	6-port, Flush
AX101788	Elec. White	6-port, Flush
AX101789	Black	6-port, Flush
AX102623	White	6-port, Flush
AX102568	Ivory	6-port, Flush

## MediaFlex Plate

MediaFlex Plates are one part of the comprehensive line of plates and inserts that snap together to create a full line of modular workstation outlets. MediaFlex Plates can be mounted over standard NEMA type outlet boxes and rings to provide support for a variety of MediaFlex Adapters and Inserts. The fully modular construction combined with the front access design provides extensive configuration flexibility for current and future network needs. MediaFlex Plates are available in Single gang and Double gang configurations. The Double gang faceplate comes with a stand-off ring included in the package. This ring allows for easy mounting with virtually any industry electrical box or mud/adaptor rings, therefore providing added installation flexibility. Each plate has the capacity of up to 6 ports per Single gang and 12 ports per Double gang.

Part #	Color	Description
AX101745	Gray	Single Gang
AX101746	Almond	Single Gang
AX101747	Elec. White	Single Gang
AX101748	Black	Single Gang
AX102608	White	Single Gang
AX102569	Ivory	Single Gang
AX101869	Gray	Double-Gang
AX101870	Almond	Double-Gang
AX101871	Elec. White	Double-Gang
AX101872	Black	Double-Gang
AX102609	White	Double-Gang
AX102570	Ivory	Double-Gang

## MediaFlex Surface Adapter Box

MediaFlex Surface Adapter Boxes are one part of the comprehensive line of plates and inserts that snap together to create a full line of modular workstation outlets. MediaFlex Surface Adapter Boxes can be mounted over standard NEMA type outlet boxes and rings to provide support for the MediaFlex plates. The MediaFlex Surface Adapter Boxes are available as a Double gang configuration. The double gang box allows more room for cable management and bend radius control.

## MediaFlex Surface Adapter Box (cont.)

Part #	Color	Description
AX102480	Gray	Single-Gang
AX102481	Almond	Single-Gang
AX102482	Elec. White	Single-Gang
AX102483	Black	Single-Gang
AX102484	White	Single-Gang
AX102485	Ivory	Single-Gang
AX101873	Gray	Double-Gang
AX101874	Almond	Double-Gang
AX101875	Elec. White	Double-Gang
AX101876	Black	Double-Gang
AX102610	White	Double-Gang
AX102571	Ivory	Double-Gang

## MediaFlex Insert

MediaFlex Inserts provide optimum flexibility in configuring multimedia workstation outlets that respond to any present or future network needs. MediaFlex MDVO-style Inserts along with MediaFlex Filler Inserts and MediaFlex GigaFlex Inserts allow for the easy configuration of outlets. All inserts are front loaded and easily snapped in and out of the MediaFlex Plates for simple installation and maintenance.

## MediaFlex MDVO-style Inserts

MediaFlex MDVO-style Inserts are available in a 2-port configuration in both Flush and Angled versions. They are compatible with all GigaFlex and MDVO Modules. (EZ-MDVO and Multimedia). The inserts are two units high for the flush version and three units high for the angled version. Therefore three flush inserts or two angled inserts are required to fully populate a Single gang MediaFlex Plate.

Part #	Color	Description
AX101749	Gray	FLUSH, 2-port, bag of 10 units
AX101750	Almond	FLUSH, 2-port, bag of 10 units
AX101751	Elec. White	FLUSH, 2-port, bag of 10 units
AX101752	Black	FLUSH, 2-port, bag of 10 units
AX102612	White	FLUSH, 2-port, bag of 10 units
AX102572	Ivory	FLUSH, 2-port, bag of 10 units
AX101753	Gray	ANGLED, 2-port, bag of 10 units
AX101754	Almond	ANGLED, 2-port, bag of 10 units
AX101755	Elec. White	ANGLED, 2-port, bag of 10 units
AX101756	Black	ANGLED, 2-port, bag of 10 units
AX102613	White	ANGLED, 2-port, bag of 10 units
AX102573	Ivory	ANGLED, 2-port, bag of 10 units

## MediaFlex GigaFlex Inserts

MediaFlex GigaFlex Inserts are available in a 2-port configuration in both PS5E (Category 5E) and PS6+ (Beyond Category 6) performance levels. The inserts are two units high, therefore three inserts can be used to fully populate a Single gang MediaFlex Plate; making up a 6-port outlet.

Part #	Color	Description
AX101765	Gray	PS6+, 2-port
AX101766	Almond	PS6+, 2-port
AX101767	Elec. White	PS6+, 2-port
AX101768	Black	PS6+, 2-port
AX102574	Ivory	PS6+, 2-port
AX101769	Gray	PS5E, 2-port
AX101770	Almond	PS5E, 2-port
AX101771	Elec. White	PS5E, 2-port
AX101772	Black	PS5E, 2-port
AX102575	Ivory	PS5E, 2-port

# Data Communications



## MediaFlex Insert (cont.)

### MediaFlex Filler Inserts

MediaFlex Filler Inserts are used to fill the unused spaces in low density workstation outlets. They are available in one unit and two unit sizes.

Part #	Color	Description
AX101757	Gray	1-UNIT, bag of 10 units
AX101758	Almond	1-UNIT, bag of 10 units
AX101759	Elec. White	1-UNIT, bag of 10 units
AX101760	Black	1-UNIT, bag of 10 units
AX102614	White	1-UNIT, bag of 10 units
AX102576	Ivory	1-UNIT, bag of 10 units
AX101761	Gray	2-UNIT, bag of 10 units
AX101762	Almond	2-UNIT, bag of 10 units
AX101763	Elec. White	2-UNIT, bag of 10 units
AX101764	Black	2-UNIT, bag of 10 units
AX102615	White	2-UNIT, bag of 10 units
AX102577	Ivory	2-UNIT, bag of 10 units

### MediaFlex Multimedia Insert

MediaFlex Multimedia Inserts provide optimum flexibility in configuring multimedia workstation outlets that respond to any present or future network needs. MediaFlex Multimedia Inserts along with other MediaFlex Inserts allow for easy configuration of outlets. All inserts are front loaded and easily snapped in and out of the MediaFlex Plates for easy installation and maintenance.

Part #	Color	Description
AX101877	Gray	3-port RCA
AX101878	Almond	3-port RCA
AX101879	Elec. White	3-port RCA
AX101880	Black	3-port RCA
AX102616	White	3-port RCA
AX102578	Ivory	3-port RCA
AX101881	Gray	1-port SVHS
AX101882	Almond	1-port SVHS
AX101883	Elec. White	1-port SVHS
AX101884	Black	1-port SVHS
AX102617	White	1-port SVHS
AX102579	Ivory	1-port SVHS
AX101885	Gray	1-port SVGA
AX101886	Almond	1-port SVGA
AX101887	Elec. White	1-port SVGA
AX101888	Black	1-port SVGA
AX102618	White	1-port SVGA
AX102580	Ivory	1-port SVGA
AX102334	Gray	SVGA Feedthrough
AX102335	Almond	SVGA Feedthrough
AX102336	Elec. White	SVGA Feedthrough
AX102337	Black	SVGA Feedthrough
AX102630	White	SVGA Feedthrough
AX102581	Ivory	SVGA Feedthrough
AX101935	Gray	Duplex SC Singlemode
AX101936	Almond	Duplex SC Singlemode
AX101937	White	Duplex SC Singlemode
AX101938	Black	Duplex SC Singlemode
AX102619	White	Duplex SC Singlemode
AX102649	Ivory	Duplex SC Singlemode
AX101939	Gray	Duplex Multimode SC Singlemode
AX101940	Almond	Duplex Multimode SC Singlemode
AX101941	Elec. White	Duplex Multimode SC Singlemode
AX101942	Black	Duplex Multimode SC Singlemode
AX102620	White	Duplex Multimode SC Singlemode
AX102650	Ivory	Duplex Multimode SC Singlemode

## Labeling Window Cover/Dust Cover

MediaFlex Accessories include Labeling Window Covers used with the MediaFlex faceplates and Dust Covers used with the MediaFlex GigaFlex Inserts. Dust Covers can also be used with standard GigaFlex and EZ-MDVO UTP modules.

Part #	Color	Description
AX101773	Clear	Window Cover, bag of 25 units
AX101774	Gray	Window Cover, bag of 25 units
AX101775	Almond	Window Cover, bag of 25 units
AX101776	Elec. White	Window Cover, bag of 25 units
AX101777	Black	Window Cover, bag of 25 units
AX101790	Clear	Dust Cover, bag of 50 units

## MDVO Faceplate, Flush

MDVO Faceplates, Flush combine ease of use and aesthetics in work area installations. The Single gang faceplates are available in 1-port and 8-port configurations, Double gang faceplates are configured for 12-ports. The Single gang faceplates can fit over the Interface Surface Adapter Boxes for surface mount installations. MDVO faceplates are suitable for use with EZ-MDVO and MDVO Multimedia Modules.

Part #	Color	Description
A0405255	Gray	1-port, Single Gang
A0405256	Almond	1-port, Single Gang
A0405257	White	1-port, Single Gang
A0405258	Black	1-port, Single Gang
AX102585	Ivory	1-port, Single Gang
A0405294	Gray	8-port, Single Gang
A0405295	Almond	8-port, Single Gang
A0405296	White	8-port, Single Gang
A0405298	Black	8-port, Single Gang
AX102586	Ivory	8-port, Single Gang
A0620806	Gray	12-port, Double Gang
A0620807	Almond	12-port, Double Gang
A0620808	White	12-port, Double Gang
A0620809	Black	12-port, Double Gang
AX102587	Ivory	12-port, Double Gang

## MDVO Angled Entry Faceplate

The MDVO Angled Entry Faceplate offers better patch cord protection than traditional faceplates and optimizes patch cord bend radius control. The MDVO Angled Entry Faceplate can accept up to four EZ-MDVO Multimedia Modules. The faceplate can be attached to standard electrical boxes or wall-mounting hardware for flush-mount installations. The faceplate can also fit over the Interface Surface Adapter Box for surface mount installations.

Part #	Color	Description
A0645267	Gray	4-port
A0645268	Almond	4-port
A0645269	White	4-port
A0645270	Black	4-port
AX102588	Ivory	4-port



# Data Communications



## Interface Plate, Flush

Interface Plates combine flexibility and ease of use in work area installations. They are designed to accept the EZ-MDVO and GigaFlex UTP modules as well as all the MDVO multimedia modules. The Interface Plates are available in Single gang and can accept up to 6 modules. They also have labeling capabilities using built-in labeling windows. The faceplates can be attached to standard electrical boxes or wall-mounting hardware for flush-mount installations. The faceplates can also fit over the Interface Adapter Boxes for surface mount installations.

Part #	Color	Description
AX101431	Gray	Interface Plate, Flush, 2-port
AX101432	Almond	Interface Plate, Flush, 2-port
AX101433	White	Interface Plate, Flush, 2-port
AX101434	Black	Interface Plate, Flush, 2-port
AX102582	Ivory	Interface Plate, Flush, 2-port
AX101435	Gray	Interface Plate, Flush, 4-port
AX101436	Almond	Interface Plate, Flush, 4-port
AX101437	White	Interface Plate, Flush, 4-port
AX101438	Black	Interface Plate, Flush, 4-port
AX102583	Ivory	Interface Plate, Flush, 4-port
AX101439	Gray	Interface Plate, Flush, 6-port
AX101440	Almond	Interface Plate, Flush, 6-port
AX101441	White	Interface Plate, Flush, 6-port
AX101442	Black	Interface Plate, Flush, 6-port
AX102584	Ivory	Interface Plate, Flush, 6-port

## Interface/MDVO Surface Adapter Box

The Interface/MDVO Surface Adapter Box allows surface mounting of Interface Plates as well as MDVO Flush and Angled entry faceplates. The box can be mounted on any flat surface or can be attached to standard electrical boxes or wall-mounting hardware for additional storage space.

Part #	Color	Description
AX101474	Gray	Single Gang
AX101475	Almond	Single Gang
AX101476	White	Single Gang
AX101477	Black	Single Gang
AX102589	Ivory	Single Gang

## MDVO Adapters

All MDVO Adapters are compatible with GigaFlex, EZ-MDVO and MDVO Multimedia Modules. The MDVO Side Entry Box can be easily mounted directly on the wall, as well as on modular furniture panels, baseboards and utility poles. The compact size of the box allows secure installation in confined areas such as behind a desk or underneath a workstation.

Part #	Color	Port	Type
A0645271	Gray	2	Side Entry Box
A0645272	Almond	2	Side Entry Box
A0645273	White	2	Side Entry Box
A0645274	Black	2	Side Entry Box
AX102590	Ivory	2	Side Entry Box
AX100304	Gray	2	106 Adapter
AX100305	Almond	2	106 Adapter
AX100306	White	2	106 Adapter
AX100307	Black	2	106 Adapter
AX102591	Ivory	2	106 Adapter
AX100308	Gray	4	106 Adapter
AX100309	Almond	4	106 Adapter
AX100310	White	4	106 Adapter
AX100311	Black	4	106 Adapter
AX102592	Ivory	4	106 Adapter
A0409651	Gray	3	Deco Adapter
A0409652	Almond	3	Deco Adapter
A0409653	White	3	Deco Adapter
A0409654	Black	3	Deco Adapter
AX102593	Ivory	3	Deco Adapter
A0407071	Gray	3	Modular Furniture Adapter
A0407072	Almond	3	Modular Furniture Adapter
A0407073	White	3	Modular Furniture Adapter
A0407074	Black	3	Modular Furniture Adapter
AX102648	Ivory	3	Modular Furniture Adapter
AX100925	Gray	4	Modular Furniture Adapter
AX100926	Almond	4	Modular Furniture Adapter
AX100927	White	4	Modular Furniture Adapter
AX100928	Black	4	Modular Furniture Adapter
AX102594	Ivory	4	Modular Furniture Adapter

## Workstation Outlets-Stainless Steel Faceplate

Ideal for labs, sanitary, medical and harsh environment type applications. Keystone-style. AX102005 is a Keystone style studded for Phone.

Part #	Faceplate Type	Port
AX102005	SG	1
AX102006	SG	1
AX102007	SG	2
AX102008	SG	3
AX102009	SG	4
AX102010	SG	6
AX102011	DG	4
AX102012	DG	6
AX102013	DG	12

# Data Communications



## GigaFlex PS6+ Modular Cord

The GigaFlex PS6+ Modular Cords are 4-pair 23 AWG UTP modular cords designed for use with the Belden IBDN Systems 2400 and 4800LX, providing channel bandwidths of 250 MHz and 300 MHz, respectively. The GigaFlex PS6+ Modular Cords have been designed to provide a mated-connection performance that exceeds the Category 6 requirements. The GigaFlex PS6+ Modular Cord's patented design, with a very small footprint, makes them fully compatible with any of the highest density hubs with RJ45 jack connections.

Part #	Color	Description	Length
AX350037	BLUE	4-pair, 23 AWG solid, T568A/B	0.6 m (2 ft.)
AX350038	BLUE	4-pair, 23 AWG solid, T568A/B	1.2 m (4 ft.)
AX350039	BLUE	4-pair, 23 AWG solid, T568A/B	2.1 m (7 ft.)
AX350040	BLUE	4-pair, 23 AWG solid, T568A/B	3.0 m (10 ft.)
AX350041	BLUE	4-pair, 23 AWG solid, T568A/B	4.6 m (15 ft.)
AX350042	BLUE	4-pair, 23 AWG solid, T568A/B	7.6 m (25 ft.)
AX350043	WHITE	4-pair, 23 AWG solid, T568A/B	0.6 m (2 ft.)
AX350044	WHITE	4-pair, 23 AWG solid, T568A/B	1.2 m (4 ft.)
AX350045	WHITE	4-pair, 23 AWG solid, T568A/B	2.1 m (7 ft.)
AX350046	WHITE	4-pair, 23 AWG solid, T568A/B	3.0 m (10 ft.)
AX350047	WHITE	4-pair, 23 AWG solid, T568A/B	4.6 m (15 ft.)
AX350048	WHITE	4-pair, 23 AWG solid, T568A/B	7.6 m (25 ft.)
AX350049	GRAY	4-pair, 23 AWG solid, T568A/B	0.6 m (2 ft.)
AX350050	GRAY	4-pair, 23 AWG solid, T568A/B	1.2 m (4 ft.)
AX350051	GRAY	4-pair, 23 AWG solid, T568A/B	2.1 m (7 ft.)
AX350052	GRAY	4-pair, 23 AWG solid, T568A/B	3.0 m (10 ft.)
AX350053	GRAY	4-pair, 23 AWG solid, T568A/B	4.6 m (15 ft.)
AX350054	GRAY	4-pair, 23 AWG solid, T568A/B	7.6 m (25 ft.)
AX350055	GREEN	4-pair, 23 AWG solid, T568A/B	0.6 m (2 ft.)
AX350056	GREEN	4-pair, 23 AWG solid, T568A/B	1.2 m (4 ft.)
AX350057	GREEN	4-pair, 23 AWG solid, T568A/B	2.1 m (7 ft.)
AX350058	GREEN	4-pair, 23 AWG solid, T568A/B	3.0 m (10 ft.)
AX350059	GREEN	4-pair, 23 AWG solid, T568A/B	4.6 m (15 ft.)
AX350060	GREEN	4-pair, 23 AWG solid, T568A/B	7.6 m (25 ft.)
AX350061	RED	4-pair, 23 AWG solid, T568A/B	0.6 m (2 ft.)
AX350062	RED	4-pair, 23 AWG solid, T568A/B	1.2 m (4 ft.)
AX350063	RED	4-pair, 23 AWG solid, T568A/B	2.1 m (7 ft.)
AX350064	RED	4-pair, 23 AWG solid, T568A/B	3.0 m (10 ft.)
AX350065	RED	4-pair, 23 AWG solid, T568A/B	4.6 m (15 ft.)
AX350066	RED	4-pair, 23 AWG solid, T568A/B	7.6 m (25 ft.)
AX350067	YELLOW	4-pair, 23 AWG solid, T568A/B	0.6 m (2 ft.)
AX350068	YELLOW	4-pair, 23 AWG solid, T568A/B	1.2 m (4 ft.)
AX350069	YELLOW	4-pair, 23 AWG solid, T568A/B	2.1 m (7 ft.)
AX350070	YELLOW	4-pair, 23 AWG solid, T568A/B	3.0 m (10 ft.)
AX350071	YELLOW	4-pair, 23 AWG solid, T568A/B	4.6 m (15 ft.)
AX350072	YELLOW	4-pair, 23 AWG solid, T568A/B	7.6 m (25 ft.)

## GigaFlex PS6+ Modular Cord

The GigaFlex PS6+ Modular Cords are 4-pair 23 AWG UTP modular cords designed for use with the Belden IBDN Systems 2400 and 4800LX, providing channel bandwidths of 250 MHz and 300 MHz, respectively. The GigaFlex PS6+ Modular Cords have been designed to provide a mated-connection performance that exceeds the Category 6 requirements. The GigaFlex PS6+ Modular Cord's patented design, with a very small footprint, makes them fully compatible with any of the highest density hubs with RJ45 jack connections.

### 4-Pair, 23 AWG solid, T568A/B-open

Part #	Length
AX350160	4.6 m (15 ft)
AX350161	7.6 m (25 ft)
AX350162	10.6 m (35 ft)
AX350163	15.0 m (50ft)

## GigaFlex PS6+ Bonded Modular Cords

CMR. 4-Pair. Bonded 24 AWG solid. T568A/B-T568A/B.

Part #	Length	Color
AX380014	1.2 m (4ft)	Blue
AX380015	2.1 m (7ft)	Blue
AX380016	3.0 m (10ft)	Blue
AX380017	4.6 m (15 ft)	Blue
AX380018	7.6 m (25 ft)	Blue
AX380026	1.2 m (4 ft)	Gray
AX380027	2.1 m (7 ft)	Gray
AX380028	3.0 m (10 ft)	Gray
AX380029	4.6 m (15 ft)	Gray
AX380030	7.6 m (25 ft)	Gray
AX380050	1.2 m (4 ft)	White
AX380051	2.1 m (7 ft)	White
AX380052	3.0 m (10 ft)	White
AX380053	4.6 m (15 ft)	White
AX380054	7.6 m (25 ft)	White
AX380056	1.2 m (4 ft)	Yellow
AX380057	2.1 m (7 ft)	Yellow
AX380058	3.0 m (10 ft)	Yellow
AX380059	4.6 m (15 ft)	Yellow
AX380060	7.6 m (25 ft)	Yellow

## GigaFlex PS5E Modular Cord

The GigaFlex PS5E Modular Cords are 4-pair 24 AWG UTP modular cords that are designed for use with the Belden IBDN Plus Cabling System and the Belden IBDN System 1200 providing channel bandwidths of 100 MHz and 160 MHz, respectively. The GigaFlex PS5E Modular Cord's patented designed features a very small footprint, making them fully compatible with the highest density hubs which use RJ45 jack connections. The GigaFlex PS5E Modular Cords have been designed to provide a mated-connection performance that exceeds the Category 5e standard. 4-pair, AWG stranded, T568A/B-T568A/B

Part #	Color	Length
AX350001	BLUE	0.6 m (2 ft.)
AX350002	BLUE	1.2 m (4 ft.)
AX350003	BLUE	2.1 m (7 ft.)
AX350004	BLUE	3.0 m (10 ft.)
AX350005	BLUE	4.6 m (15 ft.)
AX350006	BLUE	7.6 m (25 ft.)
AX350007	WHITE	0.6 m (2 ft.)
AX350008	WHITE	1.2 m (4 ft.)
AX350009	WHITE	2.1 m (7 ft.)
AX350010	WHITE	3.0 m (10 ft.)
AX350011	WHITE	4.6 m (15 ft.)
AX350012	WHITE	7.6 m (25 ft.)
AX350013	GRAY	0.6 m (2 ft.)
AX350014	GRAY	1.2 m (4 ft.)
AX350015	GRAY	2.1 m (7 ft.)
AX350016	GRAY	3.0 m (10 ft.)
AX350017	GRAY	4.6 m (15 ft.)
AX350018	GRAY	7.6 m (25 ft.)
AX350019	GREEN	0.6 m (2 ft.)
AX350020	GREEN	1.2 m (4 ft.)
AX350021	GREEN	2.1 m (7 ft.)
AX350022	GREEN	3.0 m (10 ft.)
AX350023	GREEN	4.6 m (15 ft.)
AX350024	GREEN	7.6 m (25 ft.)
AX350025	RED	0.6 m (2 ft.)
AX350026	RED	1.2 m (4 ft.)
AX350027	RED	1.2 m (4 ft.)
AX350028	RED	3.0 m (10 ft.)
AX350029	RED	4.6 m (15 ft.)



# Data Communications



## GigaFlex PS5E Modular Cord (cont.)

Part #	Color	Length
AX350030	RED	7.6 m (25 ft.)
AX350031	YELLOW	0.6 m (2 ft.)
AX350032	YELLOW	1.2 m (4 ft.)
AX350033	YELLOW	2.1 m (7 ft.)
AX350034	YELLOW	3.0 m (10 ft.)
AX350035	YELLOW	4.6 m (15 ft.)
AX350036	YELLOW	7.6 m (25 ft.)

## GigaFlex PS5E VoIP Modular Cords

CMR, 4-Pair, 24 AWG stranded, T568A/B-T568A/B.

Part #	Length	Color
AX330013	0.6 m (2 ft)	Blue
AX330014	1.2 m (4 ft)	Blue
AX330015	2.1 m (7 ft)	Blue
AX330016	3.0 m (10 ft)	Blue
AX330017	4.6 m (15 ft)	Blue
AX330049	0.6 m (2 ft)	White
AX330050	1.2 m (4 ft)	White
AX330051	2.1 m (7 ft)	White
AX330052	3.0 m (10 ft)	White
AX330053	4.6 m (15 ft)	White
AX330054	7.6 m (25 ft)	White
AX330025	0.6 m (2 ft)	Gray
AX330026	1.2 m (4 ft)	Gray
AX330027	2.1 m (7 ft)	Gray
AX330028	3.0 m (10 ft)	Gray
AX330029	4.6 m (15 ft)	Gray
AX330030	7.6 m (25 ft)	Gray
AX330019	0.6 m (2 ft)	Green
AX330020	1.2 m (4 ft)	Green
AX330021	2.1 m (7 ft)	Green
AX330022	3.0 m (10 ft)	Green
AX330023	4.6 m (15 ft)	Green
AX330024	7.6 m (25 ft)	Green
AX330043	0.6 m (2 ft)	Red
AX330044	1.2 m (4 ft)	Red
AX330045	2.1 m (7 ft)	Red
AX330046	3.0 m (10 ft)	Red
AX330047	4.6 m (15 ft)	Red
AX330048	7.6 m (25 ft)	Red
AX330055	0.6 m (2 ft)	Yellow
AX330056	1.2 m (4 ft)	Yellow
AX330057	2.1 m (7 ft)	Yellow
AX330058	3.0 m (10 ft)	Yellow
AX330059	4.6 m (15 ft)	Yellow
AX330060	7.6 m (25 ft)	Yellow

## GigaFlex PS6+ Patch Panel

The GigaFlex PS6+ Patch Panel is a fully loaded patch panel using black GigaFlex PS6+ Modules. The unmatched performance of the GigaFlex PS6+ Module exceeds all parameters specified in the Category 6 standard. All performance characteristics including NEXT, FEXT, Attenuation and Return Loss have been set to guarantee transmission performance up to 300 MHz and a data-rate of up to 4.8 Gb/s.

Part #	Color	Description
AX101612	Gray	1U, 24-port
AX101611	Black	1U, 24-port
AX101614	Gray	2U, 48-port
AX101613	Black	2U, 48-port

## MINI-COM® Modular Patch Panels

Accepts all Mini-Com Modules, including UTP, Fiber Optic, and Audio Video, which snap in and out for easy moves adds and changes. Mounts to Standard TIA/EIA 19" racks. All Modular Patch Panels accept labels (adhesive or built in) for custom labeling. Angled Patch Panels facilitate proper bend radius control and minimize the need for horizontal cable managers and are designed for use with Panduit PatchRunner Vertical Cable Management System. Faceplates removable from front. Modules sold separately.

## MINI-COM® Modular Patch Panels

Label with adhesive backed labels.



Part #	Description
CPP24WBLY	24 port patch panel supplied with 6 CFFP4 type snap-in faceplates, 1 RU
CPP48WBLY	48 port patch panel supplied with 12 CFFP4 type snap-in faceplates, 2 RU

## MINI-COM® Modular Patch Panels with Labels

Built in label pocket, labels included.



Part #	Description
CPPL24WBLY	24 port patch panel supplied with 6 CFFPL4 type snap-in faceplates, 1 RU
CPPL48WBLY	48 port patch panel supplied with 12 CFFPL4 type snap-in faceplates, 2 RU

## MINI-COM® Angled Modular Faceplate Patch Panels with Labels

Built in label pocket, labels included.

Part #	Description
CPPLA24WBLY	24 port patch panel supplied with 6 CFFPL4 type snap-in faceplates, 1 RU
CPPLA48WBLY	48 port patch panel supplied with 12 CFFPL4 type snap-in faceplates, 2 RU

## MINI-COM® Modular 6 Port Faceplate Patch Panels with Labels

Built in label pocket, labels included.

Part #	Description
CPPL24M6BLY	24 port patch panel supplied with 4 six position snap-in faceplates, 1 RU
CPPL48M6BLY	48 port patch panel supplied with 8 six position snap-in faceplates, 2 RU

## MINI-COM® 12 Port Wall Mount Modular Faceplate Patch Panels

Part #	Description
CWPP12WBL	12 port patch panel supplied with 3 CFFP4 type snap-in faceplates with integrated wall mount bracket
CPP12WBL	12 port patch panel supplied with 3 CFFP4 type snap-in faceplates. Mounts to standard 89D bracket (WB89D).
WB89D	Wall mount bracket accepts 12 port (CPP12WBL) patch panel. Can also be used to mount industry standard 66 blocks

## Replacement Labels for MINI-COM® Modular Patch Panels

Replacement label/label cover kit for 4 port CFFPL4 faceplate patch panels (CPPL24WBLY, CPPL48WBLY) and Mini-Com modular furniture faceplates (CFFPL4, CFFPLA4, CFFPEB-SL4, CFFHSL4). Each Kit contains 6 labels and 6 clear label covers per bag.



Part # C4PPLK







## MINI-COM® High Density Modular Faceplate Patch Panels

High Density patch panels conserve valuable rack space. Angled Patch Panels facilitate proper bend radius control and minimize the need for horizontal cable managers and are designed for use with Panduit PatchRunner Vertical Cable Management System. Accepts all Mini-Com Modules, including UTP, Fiber Optic, and Audio Video, which snap in and out for easy moves adds and changes. Mounts to Standard TIA/EIA 19" racks. Patch Panels include pre-printed numbers above each port for proper identification 72 port version.



## MINI-COM® Flush High Density Modular Patch Panels

Part #	Description
CPP48HDWBLY	48 port high density patch panel supplied with rear-mounted faceplates (space not available for component labels), 1 RU
CPP72FMWBLY	72 port high density patch panel supplied with rear mounted faceplates, (can be labeled with LS8 & LS9 adhesive label cassettes), 2 RU

## Mini-Com Angled High Density Modular Patch Panels

Part #	Description
CPPA48HDWBLY	48 port angled high density patch panel supplied with rear-mounted faceplates (space not available for component labels), 1 RU
CPPA72FMWBLY	72 port angled high density patch panel supplied with rear-mounted faceplates, (can be labeled with LS8 & LS9 adhesive label cassettes), 2 RU

## MINI-COM® Ultimate ID Modular Patch Panels

Designed to efficiently support TIA/EIA-606-A standard labeling requirements. Accepts all Mini-Com Modules, including UTP, Fiber Optic, and Audio Video, which snap in and out for easy moves adds and changes. Mounts to Standard TIA/EIA 19" racks. Faceplates removable from front. Built in label pocket, labels sold separately. Identify ports using LS8 & LS9 Thermal transfer printers and computer printable label sheets (JILJ4). 24 port panel requires 6 – 4 port labels, 48 port panel requires 12 – 4 port labels.



Part #	Description
UICMPP24BLY	24 port patch panel supplied with 6 UICPPL4BL Mini-Com Ultimate ID faceplates, 1 RU
UICMPP48BLY	24 port patch panel supplied with 6 UICPPL4BL Mini-Com Ultimate ID faceplates, 2 RU

## DP6™ PLUS Angled Patch Panels

Angled version allows cable to flow to each side of the rack and eliminates the need for managers by enabling patch cords to be routed directly into vertical cable managers. Integral cable tie mounts provide improved cable management. Panels mount to standard TIA/EIA 19" rack or 23" racks with extender bracket. Designed to meet TIA/EIA-568-B.2-1 Category 6 standard.



Part #	Description	No. of Rack Spaces
DPA24688TGY	24 port angled patch panel 8 position, 8 wire GP6™ PLUS style punchdown patch panel.	1
DPA48688TGY	48 port angled patch panel 8 position, 8 wire GP6™ PLUS style punchdown patch panel.	2

## DP5e™ Angled Patch Panels

Angled version allows cable to flow to each side of the rack and eliminates the need for managers by enabling patch cords to be routed directly into vertical cable managers. 110 style termination on back. Integral cable tie mounts for improved cable management. Panels mount to standard TIA/EIA 19" rack or 23" racks with optional extender bracket. Use PDT110 for punchdown termination. Printed circuit board design with protective cover. Terminates 4 pair, 22-26 AWG, 100 ohm, solid and stranded, unshielded.



Part #	Description	No. of Rack Spaces
DPA245E88T6Y	24 port angled patch panel 8 position, 8 wire 110 style punchdown patch panels.	1
DPA485E88T6Y	48 port angled patch panel 8 position, 8 wire 110 style punchdown patch panel.	2

## DP5e™ Patch Panels

Specifically designed to comply with the Category 5e performance requirements. Protective circuit board cover. 110 style termination on back. Mounts to standard EIA 19" or 23" racks. Write-on areas for port and panel identification. Can be clearly identified with labels. Terminated with PDT110 punchdown tool. Terminates 4 pair 22-26 AWG 100 ohm solid and stranded unshielded twisted pair cable. ^One rack space = 1.75" (44.45mm).



Part #	Description	No. of Rack Spaces^
DP125E88TGY	12 port patch panel with Universal T568A and T568B wiring scheme - 8 position, 8 wire. Mounts to 89D bracket.	-
DP245E88TGY	24 port patch panel with Universal T568A and T568B wiring scheme - 8 position, 8 wire.	1
DP485E88TGY	48 port patch panel with Universal T568A and T568B wiring scheme - 8 position, 8 wire.	2

## Voice Patch Panel

Consists of single female telco 50 pin/25 pair connector with Velcro\* fasteners wired for common active voice equipment. 24 RJ45 ports with pins 4 and 5 active in each port. Telco connector with hook and loop fasteners accommodates 180, 110 or 90 degree patch cord connectors on back of patch panel. Does not require use of a punchdown tool. Mounts to standard TIA/EIA 19" rack or 23" racks with optional extender bracket. Write-on areas available for port identification. Can be clearly identified with optional labels and icons. One rack space = 1.75" (44.45mm). M6 and #12-24 mounting screws included. 24 RJ45 port patch panel with pins 4 and 5 active in each port and one female RJ21 connector on back of panel.



Part # VP24382TV25

## Coupler Patch Panels

Mount to standard TIA/EIA 19" rack or 23" racks with optional extender bracket. Include write-on areas for panel identification and pre-printed numbers for port identification. Number of rack spaces is one. One rack space = 1.75" (44.45mm). M6 and #12-24 mounting screws included.



Part #	Description
CP245E88BL	24 port cat5e patch panel with 24 pre-installed RJ45 Category 5e component compliant couplers
CP48BNCBLY	48 port patch panel with 48 pre-installed 75 ohm BNC couplers.



## MINI-COM® Recessed Modular Faceplate Patch Panels

Three inch recessed feature eliminates patch cord interference with cabinet doors and improves bend radius protection. Release snap feature on faceplate allows front access to installed modules for easy adds, moves and changes. Accept Mini-Com Modules for UTP (including Category 5e and Category 6), Fiber optic and Coax, which snap in and out for easy moves, adds and changes. Label path panels available for easy port identification, replacement label/label covers available. Mount to standard TIA/EIA 19" or 23" racks with optional extender bracket.



Part #	Description	No. of Rack Spaces <sup>^</sup>
CPPL24WRBLY	24 port recessed patch panel designed for use with racks and cabinets. 3" recessed feature eliminates patch cord interference with cabinet doors and improves bend radius protection.	1
CPPL48WRBLY	48 port recessed patch panel with labels, supplied with 12 CFFPL4 type front removable snap-in faceplate. Designed for use with racks and cabinets.	2

## MINI-COM® TX6™ PLUS Jack Module

8 Position, 8 wire universal module. Exceeds all Category 6 requirements including Powersum ACR, ELFEXT and Return Loss. Delivers headroom over Category 6 channel requirements. GIGA-TX™ termination method which speeds installation and eliminates conductor untwists. Off white termination designates Category 6 performance with GIGA-TX™ Technology. Terminates 4-pair 26-22 AWG 100 ohm solid or stranded unshielded twisted pair cable. No punchdown tool required optional termination tool ensures conductors are fully terminated. Standard color is IW (Off White). For other colors, substitute IW with EI (Electric Ivory), WH (White), IG (Int. Gray), BL (Black), OR (Orange), RD (Red), BU (Blue), GR (Green), YL (Yellow) or VL (Violet). One module space.



Part # CJ688TGIW

## MINI-COM® TX-5e™ Module

8 Position, 8 wire universal module. Exceeds Category 5e performance requirements. Utilizes GIGA-TX™ Technology to optimize performance by eliminating conductor untwists. Red module base designates Category 5e performance. No punchdown tool required, optional termination tool insures conductors are fully terminated. Terminates 4-pair 26-22 AWG 100 ohm solid and stranded unshielded twisted pair cable. Standard color is IW (off white). For other colors, substitute IW with EI (electric ivory), WH (white), IG (int. gray), BL (black), OR (orange), RD (red), BU (blue), GR (green), YL (yellow) or VL (violet). One module space.



Part # CJ5E88TGIW

## MINI-COM® TX-5e™ Shielded Jack Module

8 position, 8 wire shielded module with one piece shield. Terminates 4-pair 26-22 AWG 100 ohm solid shielded twisted pair cable. One module space. Termination cap is color coded for T568A and T568B wiring schemes.



Part # CJS5E88TGY



## MINI-COM® MINI-JACK™ Category 3 Jack Modules

Terminates 24-22 AWG solid unshielded twisted pair cable. White jack base designates Category 3 performance. One module space. Standard color is off white. For other colors, substitute IW with EI (elect. Ivory), WH (white), IG (int. gray), BL (black), OR (orange), RD (red), BU (blue), GR (green), YL (yellow), VL (violet).



Part #	Description
CJ64IWY	6 position 4 wire module.
CJ66IWY	6 position 6 wire module.
CJ66UIWY	6 position 4 wire module. Termination cap is color coded for USOC wiring scheme.
CJ88IWY	8 position 8 wire universal module. Termination cap is color coded for T568A and T568B wiring schemes.

## MINI-COM® BNC Coax Coupler Modules

Accept BNC plugs. Available in 50 and 75 ohm versions. Compatible with MINI-COM modular patch panels, faceplates and surface mount boxes. Industry standard. One module space. Color is off white. For other colors replace suffix IW (Off White) with EI (Electric Ivory), WH (White), IG (International Gray) or BL (Black).



Part #	Type
CMB475IWY	75 Ohm
CMB41IWY	50 Ohm

## MINI-COM® Multi-Media/Fiber Surface Mount Boxes

Accepts MINI-COM Modules for UTP (including Category 5, Category 6), Fiber Optic cables, Coax cables and OPTI-JACK Fiber Connector Modules. Slots accept cable ties for cable management. Mounts easily with screws or adhesive tape. Tamper resistant screw for added security. Five decorator colors to complement any decor. Unique fiber spool design secures cable in place. Built-in fiber spool stores up to 78.8 feet (24 meters) of buffered fiber optic cable. Splicing capacity available. Cable entry from side and rear knockouts and from opening in bottom of base. Surface box screw covers can be used in place of clear label holders. Supplied with mounting screws and adhesive backing.



Part #	Description	Can be used with PAN-WAY Raceway
CBXF12IW-AY	Surface mount box holds up to twelve MINI-COM Connector Modules or twelve OPTI-JACK Fiber Connector Modules. 1.81"H (46mm) x 4.71"W (120mm) x 6.67"L (170mm).	LD3 LD5 LD10
CBXF6IW-AY	Surface mount box holds up to six MINI-COM Connector Modules or six OPTI-JACK Fiber Connector Modules. .99"H (25mm) x 4.71"W (120mm) x 6.67"L (170mm).	LD3 LD5



## MINI-COM® Surface Mount Boxes

Cable entry from side and rear knockouts and from opening in base. Accepts MINI-COM® modules. Surface box screw covers can be used in place of clear label holders on boxes with label/label cover feature. Mounts easily with screw, adhesive tape or magnet. Combination label holder/screw cover for custom identification (4 module space and greater not including CBXC4). Standard color is off white. For other colors substitute IW with EI- electrical ivory, WH- white, IG- int. gray, and BL- black. \*Raceway does not enter box.



### 1 Module Space Surface Mount Box

Part #	Description	Can be used with PAN-WAY Raceway
CBX1IW-A	Surface mount box holds one Mini-Com module. Supplied with adhesive backing. 0.90" (22.8mm) H x 1.01" (25.5mm) W x 1.88" (47.7mm) L	LDPH3

### 2 Module Space Surface Mount Box

Part #	Description	Can be used with PAN-WAY Raceway
CBX2IW-AY	Surface mount box holds up to two Mini-Com modules. Supplied with adhesive backing 1.06" (27mm) H x 1.95" (50mm) W x 3.65" (93mm) L	LD3, LD5, LDPH3, LDPH5
CBXJ2IW-A	Surface mount box holds up to two Mini-Com modules. Supplied with adhesive backing. 0.91" (23.1mm) H x 1.77" (45mm) W x 2.44" (62mm) L	LD5*, LDPH5*

### 4 Module Space Low Profile Mount Box

Part #	Description	Can be used with PAN-WAY Raceway
CBXC4IW-A	Surface mount box holds up to four Mini-Com modules. Supplied with mounting screws, adhesive backing. 0.91" (23mm) H x 3.2" (80mm) W x 3.2" (80mm) L	LD5, LDPH5

### 4 Module Space Surface Mount Box

Surface mount box holds up to four Mini-Com modules. Provides slots that accept cable ties for strain relief. Provides bend radius control. Supplied with mounting screw, adhesive backing and label holder/screw cover. 1.1" (22.8mm) H x 2.9" (74mm) W x 4.5" (114mm) L. Can be used with PAN-WAY Raceway LD3, LD5, LDPH3, LDPH5.

Part # CBX4IW-AY

### 6 Module Space Surface Mount Box

Surface mount box holds up to six Mini-Com modules. Provides slots that accept cable ties for strain relief. Provides bend radius control. Supplied with mounting screws, adhesive backing and label holder/screw cover. 1.04" (26.3mm) H x 4.95" (125.7mm) W x 3.79" (96.2mm) L. Can be used with PAN-WAY Raceway LD3, LD5, LD10, LDPH3, LDPH5, LDPH10.

Part # CBXD6IW-AY

### 12 Module Space Surface Mount Box

Part #	Description	Can be used with PAN-WAY Raceway
CBX12IW-AY	Surface mount box holds up to twelve Mini-Com modules. Supplied with mounting screws, adhesive backing and label holder/screw cover. 1.035" (26mm) H x 5.71" (145mm) W x 5.45" (138mm) L	LD5, LD10, LDPH5, LDPH10

## MINI-COM® Ultimate ID Surface Mount Box

12 port angled multi-media surface mount box accepts up to twelve Mini-Com modules and includes built-in figure eight spool to help manage fiber cable. Fiber Optic and Coax, which snap in and out for easy moves, adds and changes. Features twelve ports, six on each side, angled to improve bend radius control. Offset stacking capability with use of self threading screw (not included). Includes two knockouts which are compatible with Panduit® LD5 and LD10 raceway. Mounts to single or double gang opening. Mounts easily with supplied mounting screws, adhesive tape or optional magnet (CSBM-X). Supplied with clear station and port label covers, labels sold separately. Computer printable label sheets for desktop printers and write-on labels available. Replacement screw covers and label covers available. Optional icons available. For other colors replace suffix BL (Black) with EI (Electric Ivory), IG (International Gray) or IW (Off White). All surface mounting boxes supplied with mounting screws.



Part # UICBXA12IW-A

## MINI-COM® Shuttered Surface Mount Boxes

Accept Mini-Com modules for STP and UTP (including Category 5e and Category 6), FJ® Fiber Optic Jack modules and flush Fiber Optic Adapter modules, which snap in and out for easy moves, adds and changes. Clear shuttered doors for easy view of modules. Cable entry from side, rear and base knockouts. Optional icons available. Optional adhesive labels available. For other colors replace suffix IW (Off White) with EI (Electric Ivory), WH (White), IG (International Gray) or BL (Black). \*Raceway does not enter box.



Part #	Description	Used with Pan-Way® Raceway
CBXS1IW-A	Shuttered surface mount box accepts one Mini-Com module. .62"H x 1.64"W x 2.47"L (15.75mm x 41.66mm x 62.73mm)	LD5/LDPH5*
CBXS2IW-A	Shuttered surface mount box accepts two Mini-Com modules. .94"H x 2.40"W x 2.5"L (23.88mm x 60.96mm x 63.50mm)	LD5/LDPH5*
CBXS4IW-AY	Shuttered surface mount box accepts four Mini-Com modules. .94"H x 4.65"W x 3.28"L (23.88mm x 118.11mm x 83.31mm)	LD3/LDPH3/LD5/LDPH5
CBXS6IW-AY	Shuttered surface mount box accepts six Mini-Com modules. .94"H x 6.7"W x 3.28"L (23.88mm x 170.18mm x 83.31mm)	LD3/LDPH3/LD5/LDPH5

## MINI-COM® Executive Vertical Faceplates

Individual modules snap in and out. Replacement labels and screws available. Accept Mini-Com modules. Can be clearly identified with labels. Standard color is off white. For other colors, substitute IW with EI - electrical ivory, WH - white, IG - int. gray or BL - black. All faceplates supplied with mounting screws, labels and label cover/screw covers.



Part #	Description	Style
CFPE10IW-2GY	Double gang faceplate holds up to ten Mini-Com modules.	10 Module space double gang faceplate
CFPE1IWY	Single gang faceplate holds a single MINI-COM module.	1 Module space single gang faceplate
CFPE2IWY	Single gang faceplate holds up to two MINI-COM modules.	2 Module space single gang faceplate
CFPE4IWY	Single gang faceplate holds up to four MINI-COM modules.	4 Module space single gang faceplate
CFPE6IWY	Single gang faceplate holds up to six MINI-COM modules.	6 Module space single gang faceplate

# Data Communications



## MINI-COM® Snap-On Modular Furniture Faceplate Extender

For other available colors, substitute IW or BL with EI - electrical ivory, WH - white or IG - light gray. For use when depth inside modular furniture base is limited. Extends plate approximately 1/2". Accepts all Panduit modular faceplates. Fits into same breakout size as CFFP faceplate.



Part # MFFPEBL

## Stainless Steel Faceplates

Can clearly be identified with adhesive labels. All faceplates supplied with mounting screws.



Part #	Description
CFP10S-2GY	10 Module Space, Double Gang Faceplate
CFP2SY	2 Module Space, Single Gang Faceplate, holds two Mini-Com® modules
CFP4S-2GY	4 Module Space, Double Gang Faceplate, holds four Mini-Com modules
CFP4SY	4 Module Space, Single Gang Faceplates, holds four Mini-Com modules, requires 1.9" wide backbox
CFP6SY	6 Module Space, Single Gang Faceplate, holds six Mini-Com modules, requires 1.9" wide backbox
CFP8S-2GY	8 Module Space, Double Gang Faceplate, holds up to eight Mini-Com modules

## MINI-COM® Classic Series Horizontal Faceplates

Individual modules snap in and out. All faceplates supplied with mounting screws. Accepts Mini-Com modules. Standard color is off white. For other colors, substitute IW with EI (electrical ivory), WH (white), IG (int. gray) or BL (black).



Part #	Description
CFPH2IW	Single gang horizontal faceplate holds up to two MINI-COM modules.
CFPH4IW	Single gang horizontal faceplate holds up to four MINI-COM modules.

## MINI-COM® Classic Series Vertical Faceplate Kits

Can be clearly identified with labels. All faceplates supplied with mounting screws. Accepts Mini-Com modules. Standard color is off white. For other colors, substitute IW with EI (electrical ivory), WH (white), IG (int. gray) or BL (black).



Part #	Description	Style
CFPP12IW-2G	Double gang faceplate frame and six flat module inserts (2 module spaces each). Holds up to twelve Mini-Com modules.	12 Module Space, Double Gang Faceplate Kit
CFPS4IW	Single gang faceplate frame and two sloped module inserts (2 module spaces each). Holds up to four Mini-Com modules.	4 Module Space Single Gang Sloped Faceplate Kit

## MINI-COM® Classic Series Vertical Faceplates

Individual modules snap in and out. All faceplates supplied with mounting screws. Accepts Mini-Com modules. Standard color is off white. For other colors, substitute IW with EI - electrical ivory, WH - white, IG - int. gray or BL - black.



Part #	Description	Type
CFP1IW	Single gang faceplate holds a single Mini-Com module.	1 Module space, single gang faceplate
CFP2IW	Single gang faceplate holds up to two Mini-Com modules.	2 Module space, single gang faceplate
CFP4IW	Single gang faceplate holds up to four Mini-Com modules.	4 Module space, single gang faceplate



## MINI-COM® Industrial Faceplate

Protects modules from water penetration. Sealed front and rear with water tight gaskets. Two piece construction with hinged cover. Standard color is off white. For other colors, substitute IW with EI (electrical ivory), WH (white), IG (int. gray) or BL (black). Holds up to four Mini-Com modules. Dimensions are 5.8" H x 3.1" W x 1.5" D.



Part # CFPWR4IW

## MINI-COM® Sloped Executive Series Faceplate Kit

Individual modules snap in and out. Dual module inserts are front releasable. Accepts Mini-Com modules. All faceplates supplied with mounting screws, labels and label cover/screw covers. Standard color is off white. For other colors, substitute IW with EI (electrical ivory), WH (white), IG (int. gray) or BL (black). Single gang faceplate frame and two sloped module inserts (2 module spaces each).



Part # CFPSE4IWY

## Keystone Phone Plate with Module

Stainless steel phone plate with GIGA-TX™ style. Includes mounting studs on plate which are positioned to mount standard wall mount telephones with keystone adaptation flush to wall surface. All faceplates supplied with mounting screws. Caution: May not be suitable for wall mounting IP phones.



Part #	Description
KWP5EY	Category 5e Keystone Jack Module
KWP6PY	Category 6 Keystone Jack Module

## Stainless Steel "106" Duplex Faceplates

Designed for in-wall box applications.



Part #	Description
WPS-20	Covers one NEMA standard 106 duplex electrical outlet. In communication applications covers one standard 106 communication module frame. Supplied with one mounting screw.
WPS-202	Covers two NEMA standard 106 duplex electrical outlets. In communications applications covers two standard 106 module frames. Supplied with two mounting screws.

## MINI-COM® Tamper Resistant Faceplate

Includes two tamper resistant screws to prevent unauthorized access to the connections. Sloped design improves bend radius control. Made of impact resistant material. Optional icons available. Two piece hinged design. Mounts to single gang opening. Accept Mini-Com modules for STP and UTP (including Category 5e and Category 6), and Coax, which snap in and out for easy moves, adds and changes. For other colors replace suffix IW (Off White) with EI (Electric Ivory), WH (White), IG (International Gray), BL (Black), CIG (International Gray base with Clear cover) or CL (Clear base and cover). All faceplates supplied with mounting screws. Single gang, vertical tamper resistant faceplate accepts four Mini-Com modules. Dimensions 5.8"H x 3.1"W x 1.5"D (147.32mm x 78.74mm x 38.10mm)



Part # CFPTR4IW



## MINI-COM® Ultimate ID Classic Series Faceplates

Designed to efficiently support TIA/EIA-606-A standard labeling requirements. Accepts Mini-Com modules for STP and UTP (including Category 5e Category 6), Fiber Optic and Coax, which snap in and out for easy moves, adds and changes. Supplied with color coordinated screw cover and clear station and port label covers, labels sold separately. Computer printable label sheets for desktop printers and write-on labels available. Replacement screw covers and label covers available. Optional icons available. For other colors replace suffix IW (Off white) with EI (Electric ivory) or WH (White). All faceplates supplied with mounting screws.



Part #	Description	Labels Required
UICFP2IW	Single gang, vertical faceplate holds up to two Mini-Com modules.	1-one port, 1-two port
UICFP4IW	Single gang, vertical faceplate holds up to four Mini-Com modules.	1-one port, 2-two port
UICFP6IW	Single gang, vertical faceplate holds up to six Mini-Com modules. Require min. 1.9" wide in wall box or wallboard adapter for proper installation.	1-one port, 2-three port
UICFPH2IW	Single gang, horizontal faceplate holds up to two Mini-Com modules.	1-one port, 1-two port
UICFPH4IW	Single gang, horizontal faceplate holds up to four Mini-Com modules.	1-one port, 1-four port

## MINI-COM® Water Resistant Faceplate

Includes unique gaskets that will prevent water from entering and damaging connections. Meets the level of protection required for an IP56 enclosure. Sloped design improves bend radius control. Made of impact resistant material. Optional icons available. Two piece hinged design. Mounts to single gang opening. Accept Mini-Com modules for STP and UTP (including Category 5e and Category 6), and Coax, which snap in and out for easy moves, adds and changes. For other colors replace suffix CIG (Clear cover with International Gray base) with IG (International Gray) or CL (Clear base and cover). All faceplates supplied with mounting screws. Single gang, vertical water resistant faceplate accepts four Mini-Com modules. Dimensions 5.8"H x 3.1"W x 1.5"D (147.32mm x 78.74mm x 38.10mm)



Part # CFPWR4CIG

## MINI-COM® Classic Series Faceplates with Label and Label Cover

Accept Mini-Com modules for STP and UTP (including Category 5e and Category 6), Fiber Optic and Coax, which snap in and out for easy moves, adds and changes. Includes label/label covers for easy port identification, replacement label/label covers available. For other colors replace suffix IW (Off White) with EI (Electric Ivory), WH (White) or IG (International Gray). All faceplates supplied with mounting screws. Standard package quantity is one. Standard carton quantity is ten.



Part #	Description
CFPL2IWY	Single gang, vertical faceplate accepts two Mini-Com modules.
CFPL3IWY	Single gang, vertical faceplate accepts three Mini-Com modules.
CFPL4IWY	Single gang, vertical faceplate accepts four Mini-Com modules.
CFPL6IWY	Single gang, vertical faceplate accepts six Mini-Com modules.

## MINI-COM® Snap-On Modular Furniture Faceplates

Accept Mini-Com modules for STP and UTP (including Category 5e and Category 6), Fiber Optic and Coax, which snap in and out for easy moves, adds and changes. Optional adhesive labels available. Select faceplates feature label/label covers included for easy port identification, replacement label/label covers available. Color is black.



Part #	Type	Description
CFFPA2BL	2 Module Space Angled Furniture Snap-On Faceplate	Angled faceplate snaps into industry standard knockouts found on modular furniture. Accepts up to two Mini-Com modules.
CFFPE3BL	3 Module Space Extended Furniture Snap-On Faceplate	Faceplate snaps into knockouts found on Knoll Morrison Furniture as well as industry standard knockouts. Accepts up to three Mini-Com modules.
CFFPKE3BL	3 Module Space Knoll equity Furniture Snap-On Faceplate	Faceplate snaps into knockouts found on Knoll furniture. Accepts up to three Mini-Com modules.
CFFPLA4BL	4 Module Space Angled Modular Furniture Snap-on Faceplate with Labels	Angled faceplate snaps into industry standard knockouts found on modular furniture. Accepts up to four Mini-Com modules. Supplied with write-on label and label cover.
UICFFP4BL	UID furniture, faceplate labels. 1-one port, 1-four port	Faceplate snaps into standard knockouts found on modular furniture. Holds up to four Mini-Com modules.
CFFPL4BL	4 Module Space Modular Furniture Snap-On Faceplate with Labels	Faceplate snaps into industry standard knockouts found on modular furniture. Accepts up to four Mini-Com modules. Supplied with write-on label and label cover.
CFFP4BL	4 Module Space Modular Furniture Snap-On Faceplate	Faceplate snaps into industry standard knockouts found on modular furniture. Accepts up to four Mini-Com modules.
CFFPHM4BL	4 Module Space Herman Miller Furniture Snap-on Faceplate	Faceplate snaps into knockouts found on Herman Miller furniture such as Action Office Series 2 and 3 and Ethospace baseline. Accepts up to four Mini-Com modules.
CFFPEBSL4BL	4 Module Space Herman Miller Ethospace Beltline Furniture Snap-On Faceplate	Sloped faceplate snaps into knockouts found on Herman Miller furniture such as Ethospace Beltline. Accepts up to four Mini-Com modules. Supplied with write-on label and label cover and icon slots.

## MINI-COM® Ultimate ID™ Tamper Resistant Faceplate Kit

Designed to efficiently support TIA/EIA-606-A standard labeling requirements. Includes tamper resistant screw to prevent unauthorized access to the connections. Front accessible inserts are recessed and provide a 30° slope to protect the cable bend radius. Requires minimum in wall box depth of 2.125". Accepts Mini-Com modules for STP and UTP (including Category 5e and Category 6), Fiber Optic and Coax, which snap in and out for easy moves, adds and changes. Supplied with color coordinated screw cover. Computer printable label sheets for desktop printers and write-on labels available. Optional icons available. For other colors replace suffix IW (Off white) with EI (Electric ivory) or WH (White). All faceplates supplied with mounting screws. Kit includes faceplate frame, two recessed modular inserts, faceplate cover with additional outlet station identifier and tamper resistant screw. Holds up to four Mini-Com modules.



Part # UICFPTR4IW

# Data Communications



## MINI-COM® Ultimate ID Executive Series Faceplates

Designed to efficiently support TIA/EIA-606-A standard labeling requirements. Accept Mini-Com modules for STP and UTP (including Category 5e and Category 6), Fiber Optic and Coax, which snap in and out for easy moves, adds and changes. Supplied with color coordinated screw cover and clear station and port label covers, labels sold separately. Computer printable label sheets for desktop printers and write-on labels available. Replacement screw covers and label covers available. Optional icons available. For other colors replace suffix IW (Off white) with EI (Electric ivory) or WH (White). All faceplates supplied with mounting screws.



Part #	Description	Labels Required
UICFPSE2IW	Single gang, vertical sloped faceplate holds up to two Mini-Com modules.	1-one port, 1-two port
UICFPSE4IW	Single gang, vertical sloped faceplate holds up to four Mini-Com modules.	1-one port, 2-two port
UICFPSE6IW	Single gang, vertical sloped faceplate holds up to six Mini-Com modules. Requires min. 1.9" wide in wall box or wallboard adapter for proper installation.	1-one port, 2-three port
UICFPHSE2IW	Single gang, horizontal sloped faceplate holds up to two Mini-Com modules.	1-one port, 1-two port
UICFPHSE4IW	Single gang, horizontal sloped faceplate holds up to four Mini-Com modules.	1-one port, 1-four port

## MINI-COM® Inserts

Compatible with Classic and Executive faceplate frames. Front releasable. Accept Mini-Com modules for STP and UTP (including Category 5e and Category 6), Fiber Optic and Coax, which snap in and out for easy moves, adds and changes. For other colors replace suffix IW (Off White) with EI (Electric Ivory), WH (White), IG (International Gray) or BL (Black).



Part #	Description
CHS2IW-X	2 module space, ½ size, sloped insert accepts two Mini-Com modules.
CHB2MIW-X	1/3 blank insert. Reserves space for future upgrades.
CHS2SIW-X	2 module space, ½ size, sloped shuttered insert accepts two Mini-Com modules. Shutters are spring loaded and rotate out of the way for cable connections.
CHF2IW-X	2 module space, ½ size, flat insert accepts two Mini-Com modules.
CHSRE2IW-X	2 module space, ½ size, 30° sloped recessed insert accepts two Mini-Com modules.
CHS1SIW-X	1 module space, ½ size, sloped shuttered insert accepts one Mini-Com module.
CHB2IW-X	½ blank insert. Reserves space for future upgrades.
CHF2MIW-X	2 module space, 1/3 size, flat insert accepts two Mini-Com modules.

## MINI-COM® Classic Series Sloped Faceplates with Label and Label Cover

Accept Mini-Com modules for STP and UTP (including Category 5e and Category 6), Fiber Optic and Coax, which snap in and out for easy moves, adds and changes. Includes label/label covers for easy port identification, replacement label/label covers available. Optional icons available. For other colors replace suffix IW (Off White) with EI (Electric Ivory), WH (White) or IG (International Gray). All faceplates supplied with mounting screws.



Part #	Description
CFPSL2IWY	Single gang, sloped vertical faceplate accepts two Mini-Com modules.
CFPSL4IWY	Single gang, sloped vertical faceplate accepts four Mini-Com modules.
CFPSL6IWY	Single gang, sloped vertical faceplate accepts six Mini-Com modules. Requires minimum 1.9" wide electrical box for proper mounting.
CFPHSL4IWY	Single gang, sloped horizontal faceplate accepts four Mini-Com modules.

## PAN-PUNCH™ Category 5e 110 Connecting Blocks

Contrasting color connecting blocks make adds, moves and changes easier. Can be terminated a minimum of 500 times in cross-connect applications. Highly visible color-coded wiring slots. "Quiet front" eliminates shorting of adjacent contacts. Can be used with single or multiple position punchdown tools. UL 94V-0 high impact polycarbonate material.



## PAN-PUNCH 3-pair 110 Connecting Block

Dual IDC terminates UTP cable on 110 base and UTP cable or 110 patch cords for cross-connecting. Color is electric ivory. S

Part # P110CB3-X

## PAN-PUNCH 4-Pair 110 Connecting Block

Dual IDC terminates UTP cable on 110 base and UTP cable or 110 patch cords for cross-connecting. Electric ivory.

Part # P110CB4-X

## PAN-PUNCH 5-Pair 110 Connecting Block

Dual IDC terminates UTP cable on 110 base and UTP cable or 110 patch cords for cross-connecting. Electric ivory.

Part # P110CB5-X

## GP6™ PLUS Category 6 - Connecting Blocks



Part #	Description
GPCB4-CY	4-Pair Connecting Block. Dual IDC terminates 22-26 AWG, solid or stranded UTP cable. (Cross-connect end of connecting block accepts discrete wires or a patch cord connector).
GPCB5-CY	5-Pair Connecting Block. Dual IDC terminates 22-26 AWG, solid or stranded UTP cable. (Cross-connect end of connecting block accepts discrete wires or a patch cord connector).

## GP6™ PLUS Category 6 Standard Density Bases

Exceed TIA/EIA-568-B.2-1 Category 6 standard. Ideal for use in cross connects and consolidation point applications. Highly visible color-coded wiring slots ease wiring. Sturdy one piece design. Available with or without mounting legs for a variety of mounting options. Multiple mounting holes available.



Part #	Type	Description
GPB72-X	288-Pair (72 Port) Base	Positions and holds UTP wire for termination with Category 6 connecting blocks.
GPBW72-X	288-Pair (72 Port) Base - With Legs	Positions and holds UTP wire for termination with Category 6 connecting blocks, includes mounting legs.
GPB24-X	96-Pair (24 Port) Base	Positions and holds UTP wire for termination with Category 6 connecting blocks.
GPBW24-X	96-Pair (24 Port) Base - With Legs	Positions and holds UTP wire for termination with Category 6 connecting blocks, includes mounting legs.

# Data Communications



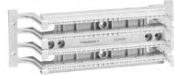
## GP6™ PLUS Category 6 High Density Bases

Exceed TIA/EIA-568-B.2-1 Category 6 standard. Ideal for use in cross connects and consolidation point applications. Highly visible color-coded wiring slots eases wiring. Sturdy one piece design. Available with or without mounting legs for a variety of mounting options. Multiple mounting holes available.

Part #	Type	Description
GPBW432-X	432-Pair (108 Port) Base	Positions and hold UTP wire for termination with Category 6 connecting blocks, includes mounting legs.
GPB432-X	432-Pair (108 Port) Base	Positions and holds UTP wire for termination with Category 6 connecting blocks.
GPBW144-X	144-Pair (36 Port) Base	Positions and hold UTP wire for termination with Category 6 connecting blocks, includes mounting legs.
GPB144-X	144-Pair (36 Port) Base	Positions and holds UTP wire for termination with Category 6 connecting blocks.

## PAN-PUNCH™ 110 Category 5e Bases

Exclusive deeper channel to facilitate TIA/EIA. Category 5e cabling installation. Ideal for use in cross-connects and consolidation applications. Sturdy, one piece design. Highly visible color coded wiring strip.



Part #	Description
P110BW100-X	100 pair base - with legs
P110BW300-X	300 pair base - with legs

## PAN-PUNCH® 110 Category 5e Field Terminated 110 System Kits

Available in 100 or 300 pair bases with 3, 4, or 5-pair connecting blocks. Note: It is common practice to completely fill each 25-pair wire strip with connecting blocks. Each kit contains the adequate number of connecting blocks to do so.



### 100 Pair Base Field Terminated Kits

Part #	Description
P110KB1004Y	Elec. ivory, 4-pair connecting block
P110KB1005Y	Elec. ivory, 5-pair connecting block

### 300 Pair Base Field Terminated Kits

Part #	Description
P110KB3004Y	Elec. ivory, 4-pair connecting block
P110KB3005Y	Elec. ivory, 5-pair connecting block

## PAN-PUNCH® Category 5e 110 Tower System

Provides a complete cross-connect system. Designed for wall mount applications. Available in 300 and 900 pair configurations with 3, 4, or 5-pair connecting blocks. Supplied jumper troughs provide horizontal cable management. Tower provides vertical feeder cable management. Note: Each tower system contains adequate connecting blocks to complete each 25-pair wiring strip.



### PAN-PUNCH® 300-Pair Tower System - Components Included

Part #	Connecting Block Color
P110KT3004Y	Elec. Ivory, 4-pair connecting block
P110KT3005Y	Elec. Ivory, 5-pair connecting block

### PAN-PUNCH® 900-Pair Tower System - Components Included

Part #	Connecting Block Color
P110KT9004Y	Elec. Ivory, 4-pair connecting block
P110KT9005Y	Elec. Ivory, 5-pair connecting block



## PAN-PUNCH® Category 5e 110 Tower System (cont.)

### PAN-PUNCH® Tower

Part #	Description
P110T300Y	300-pair tower
P110T900Y	900-pair tower

### NETKEY® Punch Down Patch Panels

#### Category 6



Part #	Description
NK6PPG12W	12 Port, eight position, eight wire, 110 style punchdown patch panel. Mounts to 89D bracket. Color coded for T568A and T568B wiring schemes.
NK6PPG24	24 port rack mount punchdown patch panel - 1 RU.
NK6PPG48	48 port rack mount punchdown patch panel - 2 RU.

#### Category 5e

Part #	Description
NK5EPPG12W	12 port, eight position, eight wire, 110 style punchdown patch panel. Mounts to 89D bracket. Color coded for T568A and T568B wiring schemes.
NK5EPPG24	24 port rack mount punchdown patch panel - 1 RU.
NK5EPPG48	48 port rack mount punchdown patch panel - 2 RU.

### Modular Faceplate Patch Panels

Part #	Description
NKFP24KSRBS	24 port faceplate patch panel with strain relief bar - 1 RU
NKFP48KSRBS	48 port faceplates patch panel with strain relief bar - 2 RU

### NETKEY® Network Components

\*\*For other colors replace suffix IW (Off White) with EI (Electric Ivory), WH (White), or BL (Black).

### Blank and Empty Inserts

Part #	Description
CHB2M**-X	1/3 blank insert. Reserves space for future upgrades.
NKHF2M**-X	Two module space, 1/3 size, flat insert accepts two NETKEY® Modules.
NKHS2**-X	Two module space, 1/2 space, sloped insert accepts two NETKEY® Modules.

### NETKEY® Flush Mount Screw-On Communication Faceplates With Labeling

Part #	Description
NK1F**	One position single gang faceplate
NK2F**	Two position single gang faceplate
NK4F**	Four position single gang faceplate
NK6F**	Six position single gang faceplate
NK12F**	Twelve position double gang faceplate
CSC**-X	Color-matched faceplate screw cover (10 per pkg.)

### NETKEY® Horizontal Communication Faceplates With Labeling

Part #	Description
NK2HSF**	Two position horizontal sloped faceplate
NK4HSF**	Four position horizontal sloped faceplate

# Data Communications



## NETKEY® Surface Mount Boxes

\*\* = Colors: IW (Off White), EI (Electric Ivory), WH (White), IG (International Gray). Includes mounting screws and adhesive tape.

Part #	Description
NK2BX**-A	Two position surface mount box - adhesive.
NK4BX**-A	Four position surface mount box - adhesive.
NK6BX**-A	Six position surface mount box - adhesive.

## NETKEY® Category 6, 5e and 3 Jack Modules

NetKey® Network Components provide a complete, standards compliant cabling infrastructure solution for voice, data and video applications. Feature the universal "keystone" design and are compatible with a wide assortment of faceplates, surface mount boxes and modular patch panels. \*Substitute IW (Off White), EI (Electric Ivory), IG (International Gray), WH (White), BL (Black), OR (Orange), GR (Green), BU (Blue), RD (Red) and YL (Yellow). \*\* Substitute IW (Off White), EI (Electric Ivory), IG (International Gray), WH (White) and BL (Black).

Part #	Description
NK688M*	Category 6 RJ45, eight position, eight wire punchdown universal keystone jack module.
NK5E88M*	Category 5e RJ45, eight position, eight wire lead frame universal keystone jack module.
NK388M**	Category 3 RJ45, eight position, eight wire universal keystone jack module.
NK366UM**	Category 3 RJ45 opening, six position, six wire USOC keystone jack module. Works with RJ11 plug.
NK366M**	Category 3 RJ45 opening, six position, six wire keystone jack module. Accepts RJ11 plug.

## NETKEY® Surface Mount Box Magnet

Surface mount box mounting magnet - optional (10 per pkg).



Part # CBM-X



## Category 6 Performance System

With Retention Force Technology® (RFT™), craft-friendly installation and performance that consistently and significantly exceeds published Category 6 standards, Leviton's eXtreme® 6+ system is ideal for critical networks.



## Category 6 Patch Panels

eXtreme 6+ Universal Patch Panels and Blocks: Six-port RJ-45 modules on the front, 110-style punch-downs on the rear. Available in multiple port configurations, T568A/B wiring configurations. eXtreme 6+ Quickport Patch Panels are pre-loaded with black eXtreme 6+ connectors. Available in 24- and 48-port versions. All eXtreme 6+ Patch Panels are cULus Listed and A-Tick compliant.

Part #	Description
69586-U89	eXtreme 6+ Universal Patch Block, 12-Port
69586-U12	eXtreme® 6+ pre-configured patch panel - 12 port panel
69586-U24	eXtreme® 6+ pre-configured patch panel - 24 port panel
69586-U48	eXtreme® 6+ pre-configured patch panel - 48 port panel
69586-C48	eXtreme® 6+ pre-configured patch panel - central label 48-port panel
69586-U96	eXtreme® 6+ pre-configured patch panel - 96 port panel
69270-U24	QuickPort® Patch Panel pre-loaded with eXtreme 6+ Connectors - 24 port panel
69270-U48	QuickPort® Patch Panel pre-loaded with eXtreme 6+ Connectors - 48 port panel
6W587-U48	eXtreme 6+ Angled Patch Panel
6W271-U48	QuickPort Angled Patch Panel pre-loaded with eXtreme 6+ Connectors

## Category 6 Performance System (cont.)

### Category 6 Quickport Connectors

RFT, pair separation towers, excellent wire retention and reinforced cutting ledges are a few of the features that make this one of the highest performing, easiest to use connectors in the industry. Dual color-coded T568A/B wiring labels. Available in 14 colors. \* = Colors: W (White), T (Light Almond), A (Almond), I (Ivory), Y (Yellow), O (Orange), C (Crimson), R (Dard Red), P (Purple), L (Blue), V (Green), G (Grey), E (Black), B (Brown).

Part #	Description
61110-R*6	eXtreme 6+ component-rated connector
61110-B*6	eXtreme 6+ component-rated connectors QuickPak™ (25 per pack)

## VertiGO™ Zero-U Patch Panel

Provides QuickPort® and Opt-X® Adapter Plate compatibility enabling a wide range of copper and fiber connectivity in a single unit. QuickPort® style supports up to 12 ports per panel. Adapter Plate style supports up to 2 Opt-X® Adapter Plates per panel. Both versions will accommodate copper and fiber connections. Flexible mounting options. Optional cable channels, available in two sizes, improve cable routing and reduce cable congestion. Consumes no horizontal rack space.

Part #	Description
49280-QP0	QuickPort® 12-Port Zero-U Patch Panel, panel only
49280-QP3	QuickPort® 12-Port Zero-U Patch Panel, panel with 3" cable channel
49280-QP6	QuickPort® 12-Port Zero-U Patch Panel, panel with 6" cable channel
49280-AP0	Opt-X® Adapter Plate Zero-U Patch Panel, panel only
49280-AP3	Opt-X® Adapter Plate Zero-U Patch Panel, panel with 3" cable channel
49280-AP6	Opt-X® Adapter Plate Zero-U Patch Panel, panel with 6" cable channel

## Category 5e Performance System

One of Leviton's most popular copper systems, GigaMax® 5e provides outstanding Category 5e rated performance, user-friendly features and long-term integrity.



## GigaMax 5e Patch Panels and Blocks

Part #	Description
5G596-U12	GigaMax 5e pre-configured patch panel - 12 port panel
5G596-U24	GigaMax 5e pre-configured patch panel - 24 port panel
5G596-U48	GigaMax 5e pre-configured patch panel - 48 port panel
5G596-U96	GigaMax 5e pre-configured patch panel - 96 port panel
5G596-U89	Universal patch block (included mounting bracket) - 12 port

## GigaMax 5e Quickport Channel-Rated Connector

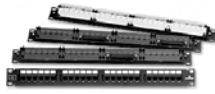
Component-rated connectors feature RFT® for long-term performance, plus pair-separation towers, reinforced cutting ledges and easy punch-down for user friendly installation. Channel-rated connectors provide reliable, consistent performance. Available in 14 colors. \* = Colors: W (White), T (Light Almond), A (Almond), I (Ivory), Y (Yellow), O (Orange), C (Crimson), R (Dark Red), P (Purple), L (Blue), V (Green), G (Grey), E (Black), B (Brown).



Part # 5G108-R\*5



# Data Communications



## Voice-Grade Patch Panels

Pre-configured in 24 and 48 port densities, and designed specifically for voice grade applications. Available in pre-connectorized and 110-IDC versions. Install the voice circuits to the connector interface and install the panels later, or run raw cable from the patch panels to the PBX cross connect field. A unique rear label is provided for the 110 IDC style patch panels that delineates 1 pair and 2 pair termination in addition to showing 25 pair color coded termination.

### Voice-Grade Patch Panels, 110-Style

Part #	Description	Number of Ports
49013-P24	Voice 8P4C Jacks, 110 termination	24
49013-P48	Voice 8P4C Jacks, 110 termination	48

### Voice-Grade Patch Panels, Pre-Connectorized

Part #	Description	Number of Ports
49012-J24	Voice 8P2C Jacks, 25-pair connector	24
49012-J48	Voice 8P2C Jacks, 25-pair connector	48
49004-J24	Voice 8P4C Jacks, 25-pair connector	24
49004-J48	Voice 8P4C Jacks, 25-pair connector	48

### Surface-Mount Mini Patch Panels

For applications with space limitations or simple breakout patching, the Mini Patch Panel with modular connectors can be mounted almost anywhere. Combine two or more panels in-line and use patch cords to make and change connections.

Part #	Description
41600-00*	25 6-position 2-conductor (RJ11) FCC Spec Jacks connected to a circuit board with one male 25-pair connector in surface-mount housing. Wired in standard T-R sequence (26-1, 27-2, 28-3, etc.)
41610-00*	25 6-position 4-conductor (RJ14) FCC Spec Jacks wired into two male 25-pair connectors in standard T-R sequence.
41620-00*	25 6-position 2-conductor (RJ11) FCC Spec Jacks connected to a circuit board with two bridged 25-pair connectors (one male and one female) in standard T-R sequence for series connection.

## QuickPort® Multimedia Patch Panels & Patch Blocks

Create a Category 5, 5e, 6 or 10G multimedia panel instantly by matching Leviton connectors with QuickPort patch panels and patch blocks. Install QuickPort voice, data, audio and video modules to configure the panel to your needs. Patch blocks hold 12 QuickPort modules. Patch panels range in port density from 24 to 48 ports. 24- and 32-port panels incorporate Leviton's exclusive "Quick Termination Station" and a cable management tray. The high-density panels include a wire management bar. An 89D mounting bracket is sold separately for patch blocks.



### QuickPort Multimedia Patch Blocks

Part #	Description	Dimensions
49255-Q89	QuickPort 12-Port Patch Block (10"H x 2.375"W)	10"H x 2.375"W
47689-0QP	QuickPort 12-Port Multimedia Patch Block (extra deep) mounting bracket included (10"H x 2.375"W)	10"H x 2.375"W

### QuickPort Multimedia Patch Panels with Cable Tray

Part #	Description	Dimensions
49255-Q24	24-Port patch panel with cable tray - order 1 Port ID Kit	3.5"H x 19"W
49255-Q32	32-Port patch panel with cable tray - order 2 Port ID Kits	3.5"H x 19"W



## QuickPort® Multimedia Patch Panels & Patch Blocks (cont.)

### QuickPort High Density Multimedia Patch Panels with Wire Management Bar

Part #	Description	Dimensions
49255-H24	24-Port Patch Panel - Order 1 Port ID Kit	1.75"H x 19"W
49255-H48	48-Port Patch Panel - Order 2 Port ID Kits	3.5"H x 19"W

### QuickPort® & Decora® Wallplates

QuickPort Decora wallplate inserts match Leviton Decora electrical switches and outlets to support high-tech communications. \* = Colors: W (White), I (Ivory), A (Almond), E (Black), B (Brown). For grey replace 0\* with GY. Blank insert is not available in brown.



Part #	Description
41642-00*	2-Port insert
41643-00*	3-Port insert
41644-00*	4-Port insert
41646-00*	6-Port insert

### QuickPort® Duplex/Quad 106 Inserts

QuickPort Duplex and Quad 106 inserts accept all QuickPort modules and fit standard NEMA wallboxes and most floor boxes and monuments. A recess above each module port on the Duplex 106 inserts accommodates Leviton Designation Labels or hand-written port ID. Uses standard duplex wallplates (sold separately). UL listed and CSA certified. \* = Color: I (Ivory), W (White), G (Gray), E (Black).

Part #	Description
41087-Q*P	Quad 106 insert
41087-2*P	Duplex 106 insert

### QuickPort® Wallplates

#### QuickPort Dual-Gang Wallplates with Designation Windows

Designed as a single-piece housing with a wide choice of port counts. Field configure with any combination of QuickPort modules. Labels and plastic label covers are included for designation windows, and are also available separately. cULus listed. \* = Colors: W (White), I (Ivory), G (Gray), E (Black).



Part #	Description	ID Windows
42080-12*	12-Port wallplate	4
42080-1*P	1-Port wallplate	2
42080-2*P	2-Port wallplate	2
42080-3*P	3-Port wallplate	2
42080-4*P	4-Port wallplate	4
42080-6*P	6-Port wallplate	4
42080-8*P	8-Port wallplate	4

#### QuickPort Single-Gang Wallplates With Designation ID Windows

Note: Wallplates are sold empty. Quickport Connectors must be ordered separately. \* = Colors: W (White), I (Ivory), G (Gray), E (Black).



Part #	Description	ID Windows
42080-1*S	1-Port wallplate	1
42080-2*S	2-Port wallplate	2
42080-3*S	3-Port wallplate	2
42080-4*S	4-Port wallplate	2
42080-6*S	6-Port wallplate	2

# Data Communications



## QuickPort® Wallplates (cont.)

### QuickPort Single-Gang Wallplates

\* - Colors: W (White), A (Almond), I (Ivory), G (Gray), E (Black), B (Brown), T (Light Almond).

Part #	Description
41080-1*P	1-Port wallplate
41080-2*P	2-Port wallplate
41080-3*P	3-Port wallplate
41080-4*P	4-Port wallplate
41080-6*P	6-Port wallplate

### QuickPort Stainless Steel Wallplates

Single-gang and dual-gang QuickPort stainless steel wallplates provide rugged durability and accept any QuickPort module. Ideal in environments that demand an easy-to-clean solution. cULus listed.

Part #	Description
43080-1S1	1-port single-gang wallplate
43080-1S2	2-port single-gang wallplate
43080-1S3	3-port single-gang wallplate
43080-1S4	4-port single-gang wallplate
43080-1S6	6-port single-gang wallplate
43080-2S2	2-port dual-gang wallplate
43080-2S4	4-port dual-gang wallplate
43080-2S6	6-port dual-gang wallplate
43080-2S8	8-port dual-gang wallplate
43080-S12	12-port dual-gang wallplate

### Standard Flush Mount Jacks

One piece construction and install easily in standard electrical boxes.



### Type 625B4 Modular Wall Jack

Add suffix to part number for available colors. Example: 40249-I.

Part #	Type	Color	Add'tl Color Avail.
40238-*	Smooth finish, standard plate, 6P6C	Ivory	W (White)
40249	Smooth finish, Standard plate, 6P4C	Brown	I (Ivory), W (White), A (Almond)
40280-*	Smooth finish, Standard plate, 8P8C	Ivory	W (White)
40538-*	Smooth finish, Midway plate, 6P6C	Ivory	W (White)
40549	Smooth finish, Midway plate, 6P4C	Brown	I (Ivory), W (White)
40580-*	Smooth finish, Midway plate, 8P8C	Ivory	W (White)

### Type 105 Flush Mount Modular Jack with 110-Type Termination

Fits a standard single opening (1.406" diameter) electrical wall plate. Mounts easily in standard single-, double-, or multi-gang electrical boxes, most floor monuments and many cellular or raised floor boxes. Installs quickly using industry standard 110-type insulation displacement connectors for 2226 AWG inside wiring. UL Listed, CSA Certified and meets FCC Part 68 requirements. To order additional colors, replace I with desired color code: 41056-WDD.

Part #	Type	Color	Add'tl Color Avail.
41054-IDD	6P4C	Ivory	-
41056-IDD	6P6C	Ivory	W (White)
41058-IDA	8C, T568B	Ivory	W (White), G (Gray)
41058-IDD	8P8C, USOC	Ivory	-



## Standard Flush Mount Jacks (cont.)

### Type 625D F-Connector Wallplates

F-Connector wallplates have one or two F-Connectors. Wallplates have a smooth finish. UL Listed and CSA certified. \* = Colors: W (White), A (Almond), I (Ivory).

Part #	Description
80781-00*	Flush-mount single F-connector
80782-00*	Flush-mount duplex F-connector

### Type 106 Duplex Flush Mount Modular Jack with 110-Type Termination

Accommodates two voice and/or data terminals in the same jack location, using standard duplex electrical wallplates. Mounts easily in standard electrical boxes, most floor monuments, raceways and many cellular or raised floor boxes without adapters. May be ganged for multiple-port applications. UL Listed, CSA Certified and meets FCC Part 68 requirements. Conductor is ivory. To order different color, replace I suffix: 41364-IDW.

Part #	Description	Add'tl Color Avail.
41360-IDI	One 8-conductor T568B jack: Voice and one 8-conductor T568B Data Designation	-
41361-IDI	Two 8-conductor T568B jacks: Voice and Data Designation	-
41364-IDI	Two 4-conductor USOC jacks: Line 1 and Line 2 Designation	W (White), G (Gray)
41365-IDI	One 6-conductor USOC jack: Voice and 8-conductor T568B Data Designation	-
41366-IDI	Two 6-conductor USOC jacks: Line 1 and Line 2 Designation	W (White), G (Gray)
41367-IDI	Two 8-conductor T568B Category 3 jacks: Line 1 and Line 2 Designation	W (White)
41368-IDI	Two 8-conductor USOC jack: Line 1 and Line 2 Designation	-

### Surface Mount Jacks

#### Type 103 Surface Mount Modular Jack, 110-Type Termination

Accommodates one telecommunications or data port. Installation is fast and easy with industry standard 110-type insulation displacement connectors. Mounts easily on most walls, floors, and office furniture using screws or double-sided tape (both included), or optional magnets. UL Listed, CSA Certified, and meets FCC Part 68 requirements.



Part #	Description	Color
41034-IDA	6-Position, 4-Conductor Jack	Ivory
41036-IDA	6-Position, 6-Conductor Jack	Ivory
41038-IDA	8-Position, 8-Conductor USOC Jack	Ivory
41038-IDB	8-Position, 8-Conductor T568B Category 3 compliant Jack	Ivory
41038-WDB	8-Position, 8-Conductor T568B Category 3 compliant Jack	White

# Data Communications



## Surface Mount Jacks (cont.)

### Type 104 Duplex Surface Mount Modular Jack, 110-Type Termination

Accommodates two voice and/or data ports. Installs quickly using 110-type insulation displacement connectors for 22-26 AWG inside wiring. User instructions and basic wiring layouts for standard configurations are included. Mounts easily on most walls, floors, and office furniture using screws or double-sided tape (both included), or optional magnets. UL Listed, CSA Certified, and meets FCC Part 68. Color is ivory.



Part #	Description	Port Designation
41044-IDA	Two 4-Conductor Jacks, one with "LINE 1" and one with "LINE 2" designation	Line 1; Line 2
41046-IDA	Two 6-Conductor Jacks, one with "LINE 1" and one with "LINE 2" designation	Line 1; Line 2
41048-IDA	Two 8-Conductor T568B Category 3 compliant Jacks, one with "LINE 1" and one with "LINE 2" designation	Line 1; Line 2
41048-IDB	Two 4-Conductor Jacks, one with "LINE 1" and one with "LINE 2" designation	Line 1; Line 2
41086-IDB	One 6-Conductor Jack with "VOICE" and one 8-conductor T568B Category 3 compliant jack with "DATA" designation	Voice; Data
41088-IDB	Two 8-Conductor T568B Category 3 compliant Jacks, one with keyed and one non-keyed, both with "DATA" designation	Data; Data

## Standard Wallplates

These wallplates are those most commonly used in communications wiring installations, and in particular with the QuickPort® Quad 106®, Duplex 106, and QuickPort Decora Multimedia Inserts. For additional colors, add suffix letter of desired color code: I (Ivory), E (Black), GY (Gray), R (Red), W (White), A (Almond). Ordering example: 80301-GY.



## Duplex Receptacle

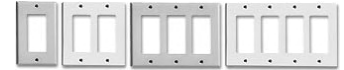
Part #	Description	Material	Color
80703	Dual-Gang Plate (2 Duplex)	Nylon	Brown
80703-E	Single-Gang Plate (1 Duplex)	Nylon	Black
80703-GY	Single-Gang Plate (1 Duplex)	Nylon	Grey
80703-I	Single-Gang Plate (1 Duplex)	Nylon	Ivory
80703-R	Dual-Gang Plate (2 Duplex)	Nylon	Red
80703-W	Dual-Gang Plate (2 Duplex)	Nylon	White
80716	Three Gang Plate (2 Duplex)	Nylon	Brown
80716-E	Dual-Gang Plate (2 Duplex)	Nylon	Black
80716-GY	Dual-Gang Plate (2 Duplex)	Nylon	Grey
80716-I	Dual-Gang Plate (2 Duplex)	Nylon	Ivory
80716-R	Three Gang Plate (2 Duplex)	Nylon	Red
80716-W	Three Gang Plate (2 Duplex)	Nylon	White



## Standard Wallplates (cont.)

### Decora/GFCI

Fits all Decora Devices and GFCIs



Part #	Type	Material	Color	Add'l Color Avail.
80301	Single-Gang Plate	Decora Plug Snap-On	Brown	I, E, GY, R, W, A
80309	Dual-Gang Plate	Decora Plus Snap-On	Brown	I, E, GY, R, W, A
80311	Three Gang Plate	Decora Plus Snap-On	Brown	I, E, GY, R, W, A
80312	Four Gang Plate	Decora Plus Snap-On	Brown	I, E, GY, R, W, A
80401	Single-Gang Plate	Urea	Brown	I, E, GY, W, A
80401-N	Three Gang Plate	Nylon	Brown	I, GY, R, W
80401-NW	Four Gang Plate	Nylon	White	I
80409	Dual-Gang Plate	Urea	Brown	I, E, GY, W, A
80409-N	Dual-Gang Plate	Nylon	Brown	I, GY, R, W
80411	Three Gang Plate	Urea	Brown	I, E, GY, W, A
80412	Four Gang Plate	Urea	Brown	I, E, GY, R, W, A

## QuickPort® 2-, 4-, 6- and 12-Port Surface Mount Housings

Easily field configured with QuickPort Snap-in modules, which can be terminated directly in each port. The 2-port version comes with a blank filler to cover and protect one unused opening. The 4- and 6-port housings are sized to completely cover a single-gang NEMA wallbox opening, while the 12-port fits over a single- or dual-gang NEMA box opening. Housings contain knockouts to accommodate raceway and cable entry, with built-in strain relief to assure undisturbed connections, and easy cover latches allow for easy adds, moves and changes. All housings can be mounted with screws or adhesive mounting tape (both provided), or with magnets or modular furniture brackets. UL Listed and compliant with NEC Article 800. \* = Colors: I (Ivory), W (White), G (Gray), E (Black). High-impact fire-retardant plastic rated UL 94V-0.



Part #	Description
41089-12*	12-Port Surface Mount Housing
41089-2*P	2-Port Surface Mount Housing (includes 1 blank module)
41089-4*P	4-Port Surface Mount Housing
41089-6*P	6-Port Surface Mount Housing

## QuickPort® Snap-In Connectors for UTP Copper Cable

Feature dual-color-coded wiring labels with both T568A and T568B wiring patterns, for dual flexibility in a single connector, plus fast, accurate termination of station wiring. All module bodies are fire-retardant plastic rated UL 94V-0. Connector spring contacts are the highest quality phosphor bronze, plated with 50 microinches of gold over 100 microinches of nickel for lowest contact resistance, maximum life. \* = Colors: I (Ivory), W (White), G (Gray), E (Black), O (Orange), L (Blue), C (Crimson Red), Y (Yellow), V (Green), P (Purple), A (Almond), B (Brown), R (Dark Red).



Part # 41106-R\*6

## QuickPort® eXtreme 6 8-conductor Component-Rated Connector

\*=Colors: (I)Ivory, (W)White, (G)Grey, (E)Black, (O)Orange, (L)Blue, (C)Crimson Red, (Y)Yellow, (V)Green, (P)Purple, (A)Almond, (B)Brown, (R)Dark Red

Part # 61109-R\*6



# Data Communications



## QuickPort® Multimedia Outlet System (MOS)

Designed to provide the highest level of application and installation flexibility for fiber optic and twisted-pair connectivity. Consists of a surface mount box and single- and dual-gang wallplates, which accept QuickPort simplex snap-in modules, plus a variety of duplex fiber optic bulkhead modules. Front-load installation capability. Duplex modules and fiber coupling types for SC, ST, MT-RJ and other applications. High-impact, fire-retardant, plastic rated UL 94V-0 material. X = Colors: (I) Ivory, (W) White, (G) Gray, (E) Black.



### MOS Surface Mount Box and Wallplates

Part #	Description
41290-DM(X)	Dual-Gang Wallplate
41290-DR(X)	Fiber Storage/Spacer Ring
41290-SM(X)	Single-Gang Wallplate
41296-MM(X)	6-Port Surface Mount Box

### MOS Inserts for use with MOS Wallplates



Part #	Description
41291-1B(X)	Blank Module, (1 unit high)
41291-1M(X)	Module for Spectro-Link MT-RJ Connector
41291-1R(X)	1 RCA Insert Module, (1 unit high)
41291-1V(X)	1 S-video Insert Module, (1 unit high)
41291-2C(X)	1 Duplex SC Coupling, (1 unit high) (zirconia ceramic sleeve)
41291-2Q(X)	2-Port QuickPort Adapter, flush, (1 unit high)
41291-2T(X)	1 Duplex ST® Coupling, (1 unit high) (phos. bronze sleeve)
41291-PC(X)	1 Duplex SC Coupling, (1 unit high) (phos. bronze sleeve)
41291-ZF(X)	1 Duplex FC Coupling, (1 unit high) (zirconia ceramic sleeve)
41291-ZT(X)	1 Duplex ST® Coupling, (1 unit high) (zirconia ceramic sleeve)
41291-PF(X)	1 Duplex FC Coupling, (1 unit high) (phos. bronze sleeve)
41292-2B(X)	Blank Module, (2 units high)
41292-2C(X)	2 Duplex SC® Coupling 45° exit, SM/MM (2 units high) (zirconia ceramic sleeve)
41292-2T(X)	1 Duplex ST® Coupling 45° exit, SM/MM (2 units high) (phos. bronze sleeve)
41292-PC(X)	2 Duplex SC® Coupling 45° exit, SM/MM (2 units high) (phos. bronze sleeve)
41292-PF(X)	1 Duplex FC Coupling 45° exit, SM/MM (2 units high) (phos. bronze sleeve)
41292-ZF(X)	1 Duplex FC Coupling 45° exit, SM/MM (2 units high) (zirconia ceramic sleeve)
41292-ZT(X)	1 Duplex ST® Coupling 45° exit, SM/MM (2 units high) (zirconia ceramic sleeve)
41293-4C(X)	2 Duplex SC® Coupling 45° exit, SM/MM (3 units high) (zirconia ceramic sleeve)
41293-4T(X)	2 Duplex ST® Coupling 45° exit, SM/MM (3 units high) (phos. bronze sleeve)
41293-PC(X)	2 Duplex SC® Coupling 45° exit, SM/MM (3 units high) (phos. bronze sleeve)
41293-PF(X)	2 Duplex FC Coupling 45° exit, SM/MM (3 units high) (phos. bronze sleeve)



## QuickPort® Multimedia Outlet System (MOS) (cont.)



### MOS Inserts of Surface Mount Boxes and Wallplates

Part #	Description
41293-ZF(X)	2 Duplex FC Coupling 45° exit, SM/MM (3 units high) (zirconia ceramic sleeve)
41293-ZT(X)	2 Duplex ST® Coupling 45° exit, SM/MM (3 units high) (zirconia ceramic sleeve)
41294-2B(X)	Blank Module (1.5 units high)
41294-2C(X)	1 Duplex SC® Coupling 45° exit, SM/MM (1.5 units high) (zirconia ceramic sleeve)
41294-2Q(X)	2-Port QuickPort Adapter, 45° exit, (1.5 units high)
41294-2T(X)	1 Duplex ST® Coupling 45° exit, SM/MM (1.5 units high) (phos. bronze sleeve)
41294-PC(X)	1 Duplex SC® Coupling 45° exit, SM/MM (1.5 units high) (phos. bronze sleeve)
41294-PF(X)	1 Duplex FC Coupling 45° exit, SM/MM (1.5 units high) (phos. bronze sleeve)
41294-ZF(X)	1 Duplex FC Coupling 45° exit, SM/MM (1.5 units high) (zirconia ceramic sleeve)
41294-ZT(X)	1 Duplex ST® Coupling 45° exit, SM/MM (1.5 units high) (zirconia ceramic sleeve)
41295-5B*	Blank Module (1/2 unit high)

### Connectorized Demarc Block

Designed for use at the demarcation point, this 50-pair M block includes mounting bracket and snap-on orange cover with designation strip. Prewired, pretested 25-pair female connector mounted on right side speeds connection of customer premise equipment to the network interface. 10"H x 3-13/32"W x 2-3/4"D (66M1-50R).



Part # 40066-MR

### 66-Clip Connecting Products

#### 66-Clip Connecting Blocks

A variety of M Blocks, including 25-pair and split 50-pair styles, provide versatile cross connect points in equipment and telecommunications rooms. Install individually or in pairs using jumper wires or bridging clips.



Part #	Description
40066-M25	M Block: 25-pair (66M1-25) 10" H x 3 5/16" W x 1 3/16"D
40066-MW2	M Block with female and male connectors (66M1-50W2) 10" H x 3 5/16" W x 1 3/16"D
40066-M50	Slit M Block: 50-pair (66M1-50) 10" H x 3 5/16" W x 1 3/16"D.

#### 66-Clip Connector Block Accessories

Accessories include covers for M Blocks and Demarc Blocks, M-Block Brackets for Jack/Connector Mounting, Wire Distribution Spools, Modular Adapters and Bridging Clips. Note: Number in parentheses refer to industry product designation.



Part #	Description
40050-MCV	Snap-on cover for M Blocks (66MC-4) 9 15/16" H x 2 5/16" W x 5/16"D
40050-MHG	10"H x 2-7/16"W x 3/4"D (66MC4LH-G)
40050-MHO	10"H x 2 7/16"W x 3/4"D (66MCH4LH-O)

# Data Communications



## 66-Clip Connecting Products (cont.)

### Standoff Bracket for M Blocks

Standard mounting bracket for use with all 25- and 50-pair M blocks. 10"H x 3-13/32"W x 1-1/2"D (89-B).

Part # 40089-00D



### Modular Adapter

Plug into M blocks to convert 66-clip contacts to a modular jack for quick connection of equipment. Housing is high-impact, fire-retardant plastic rated UL 94V-0. Spring wire contacts are Phosphor bronze plated with 50 microinches hard gold over 100 microinches nickel. Wire leads are PVC-insulated 26 AWG stranded copper.

Part #	Description	Application
40072-T2	2-position (Tap™-2)	Converts 2 66-clip contacts into a 6-position, 2-conductor modular jack
40072-T4	4-position (Tap™-4)	Converts 4 contacts into a 6-position, 4-conductor modular jack
40072-T6	6-position (Tap™-6)	Converts 6 contacts into a 6-position, 6 conductor modular jack
40072-T8	8-position T568B wiring (Tap™-8)	Converts 8 contacts into an 8-position, 8-conductor non-keyed modular jack

### GigaMax 5e 110 Connector Clips

These high-quality connector blocks securely seat the wires on 110 wiring bases, providing a gas-tight IDC connection that maintains signal integrity for high performance applications. Available in three Category 5/5e pair-count sizes: C-3, C-4 and C-5. Clips withstand 200 reterminations, and are made of fire-retardant plastic rated UL 94V-0 with solder-plated IDCs.



Part #	Description
41AB6-1FT	Category 6 110 Connector Blocks (individually polybagged)
49103-IDC	C-3 Connector Blocks (bag of 10)
49104-I50	C-4 Connector Blocks (bag of 50)
49104-IDC	C-4 Connector Blocks (bag of 10)
49105-IDC	C-5 Connector Blocks (bag of 10)

### Wall-Mount Frames and Vertical Cord Managers

Mounting frames provide numerous options for cord/cable management, access, and density via a rear cable channel, side slots, horizontal cord managers and a bottom cable tray. Vertical cord managers help route and maintain patch cords in high density applications. Begin with basic mounting frames and vertical cord managers, each with a 300-pair capacity. Expand to 600 or 900 pairs with Extension Kits.



Part #	Description
41880-300	300-pair Vertical Cord Manager, Basic unit; includes bottom cable tray.
41880-EXT	300-pair Vertical Cord Manager, Extension unit.
41MB2-3FT	Basic Mounting Frame kit with three 100-pair bases; mounting frame; cable tray; C-4 and C-5 connector blocks; three horizontal cord managers; label strip holders and white label strips.
41MB2-EXT	Extension Mounting Frame Kit with three 100-pair bases; mounting frame; C-4 and C-5 connector blocks; three horizontal cord managers; label strip holders and white label strips.
41MB2-SME	300-pair Extension Mounting-Frame Unit (sheet metal frame only)
41MB2-SMF	300-pair Basic Mounting-Frame Unit (sheet metal frame and bottom cable tray only)



## 110 Wiring Products

Bases come in 50-, 100- or 300-pair densities. The 50- and 100-pair bases may be ordered with or without standoff legs which provide more room behind the base for cable. All 300-pair bases include standoff legs, label strip holders and white paper label strips. A 50-pair 89D bracket configuration is also available (89D bracket sold separately). All components are UL Listed and now exceed TIA-568-A, Category 5e transmission requirements. Materials: Horizontal cord managers and 110 wiring bases feature sturdy single-piece construction of fire-retardant plastic rated UL 94V-0. C-4 and C-5 connector blocks (sold separately or included in kitted versions) are fire-retardant UL 94V-0 plastic with solder-plated IDC's.



Part #	Description
410L2-100	Legs only, 100-pair base (set of two) for 41DW2-100
410L2-50	Legs only, 50-pair base (set of two) for 41DW1-50
41A10-HCM	Horizontal cord manager with legs
41AW1-50	50-pair wall mount wiring base with legs
41AW2-100	100-Pair wall mount wiring base with legs
41D10-HCM	Horizontal cord manager without legs
41DW1-50	50-pair wall mount wiring base without legs
41DW1-589	50-Pair 89D bracket compatible with wiring base
41DW2-100	100-pair wall mount wiring base without legs
41AW2-300	300-pair wall mount wiring base with legs and white label strips/holders

### Kitted Versions

Part #	Description
41DBR-1F4	100-pair rack mount wiring panel kit with C4 clips
41DBR-2F4	200-pair rack mount wiring panel kit with C4 clips
41DBR-3F4	300-pair rack mount wiring panel kit with C4 clips

### Rack-Mount GigaMax 110 Wiring Products & Kits

Rack-Mount 110 Wiring Products attach to standard 19" wide racks. Panels come in 100-, 200- or 300-pair densities and terminate 22-26 AWG solid copper wire. Kits for 100-, 200- and 300-pair rack-mount panels include the panel, C-4 and C-5 connecting blocks, label strip holders and white paper labels. Horizontal Cord Managers and 110 wiring bases feature sturdy single-piece construction of fire-retardant plastic rated UL 94V-0. Wiring bases are attached to 19" wide steel rack-mount panels, painted black. Mounting screws are included. C-4 and C-5 connector blocks are fire-retardant UL 94V-0 plastic with solder-plated IDCs. All components are cULus listed.

Part #	Description
41DBR-1F4	C-5 Clips, Rack-Mount Kit, Cat 5e, 100-Pair
41DBR-2F4	C-5 Clips, Rack-Mount Kit, Cat 5e, 200-Pair
41DBR-3F4	C-5 Clips, Rack-Mount Kit, Cat 5e, 300-Pair

## HellermannTyton

### RapidNet Category 6 Copper UTP Solutions

Ideal for high performance cabling requirements, such as Gigabit Ethernet. RapidNet utilizes a bundled cable with 6 high-performance Category 6 UTP cables bound together with Kevlar binder. Cut to the customer-specified length, each 6-port loom is supplied terminated at both ends. Each pre-labeled 6-port cassette snaps easily into the modular panel. Removal of the cassette is just as easy; simply slide the latch forward and the cassette easily comes out of the rear of the panel. (XXX) = length in feet, 10 to 295 ft.

Part #	Description
RNC6CMP(XXX)	RapidNet CAT6 CMP (plenum) cassette to cassette 6-port loom - blue
RNC6CMR(XXX)	RapidNet CAT6 CMR (riser) cassette to cassette 6-port loom - white

## HellermannTyton

### RapidNet Category 6 Copper UTP Solutions (cont.)

Part #	Description
RNC6JCMP(XXX)	RapidNet CAT6 CMP (plenum) cassette to jack 6-port loom - blue
RNC6JCMR(XXX)	RapidNet CAT6 CMR (riser) cassette to jack 6-port loom - white
RNC6PCMP(XXX)	RapidNet CAT6 CMP (plenum) cassette to plug 6-port loom - blue
RNC6PCMR(XXX)	RapidNet CAT6 CMR (riser) cassette to plug 6-port loom - white
RNC6OCMP(XXX)	RapidNet CAT6 CMP (plenum) cassette to open end 6-port loom - blue
RNC6OCMR(XXX)	RapidNet CAT6 CMR (riser) cassette to open end 6-port loom - white
RNRC6CMR(XXX)	RapidNet Rubberized CAT6 CMR (riser) cassette to cassette 6-port loom - white

### RapidNet Modular Panels



All RapidNet cassettes utilize a patented latch design to allow quick and easy installation into modular patch panels. The 1U RapidNet modular patch panel accepts four cassettes, and the 2U modular patch panel accepts eight cassettes. Panels fit standard 19" racks.

Part #	Description
RNPP1U	RapidNet Modular Panel 1 U (24 UTP Copper Ports, 48 LC Fibers, 24 SC Fibers)
RNPP2U	RapidNet Modular Panel - 2U (48 UTP Copper Ports, 96 LC Fibers, 48 SC Fibers)
RNPP1URS	RapidNet Modular Panel - 1U, with RackSnap Inserts Pre-Installed
RNPP2URS	RapidNet Modular Panel - 2U, with RackSnap Inserts Pre-Installed
RNBLANK	RapidNet Modular Panel Blank
RNRCM	RapidNet Rear Cable Manager

### Category 6 AlphaSnap™ Patch Panel

All modules are individually removable and replaceable. Panel features very sturdy construction with thick rolled-edge steel plates. Each part is individually tested 3 times to ensure quality performance. Unique, patented slide label system provides a flush front panel face. Label ramp provides easy insertion of the patented slide label. Configured for 568A or 568B wiring on same panel. Lightweight aluminum rear cable manager comes with the panel and provides for neat and organized installation.

Part #	Description
PP110C6G24	1U 24 port 110 AlphaSnap Patch Panel with Rear Cable Manager
PP110C6G48	2U 48 port 110 AlphaSnap Patch Panel with Rear Cable Manager

### Category 6 Universal Patch Panel

Six port modules can be replaced easily if damaged during installation. Front face provides an attractive, flush appearance. Write-on labels provided for easy identification. Configured for 568A or 568B wiring on same panel. Optional rear cable manager provides for neat and organized installation.

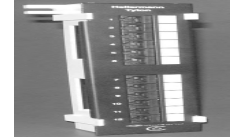


Part #	Description
PP110C612V	12 port 110 Vertical Universal Patch Panel with 89D bracket
PP110C624	1U 24 port 110 Universal Patch Panel
PP110C648	2U 48 port 110 Universal Patch Panel

## HellermannTyton

### Category 5e Universal Patch Panels

Six port modules can be replaced easily if damaged during installation. Front face provides an attractive, flush appearance. Write-on labels provided for easy identification. Configured for 568A or 568B wiring on same panel. Optional rear cable manager provides for neat and organized installation.



Part #	Description
PP110C5E12V	12 port 110 vertical Universal Patch Panel with 89D bracket
PP110C5E24	1U 24 port 110 Universal Patch Panel
PP110C5E48	2U 48 port 110 Universal Patch Panel

### Modular Patch Panel

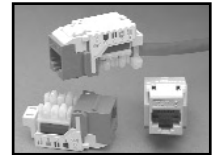
The modular patch panel is designed to accept HellermannTyton modular jacks and connectors, providing the ultimate in multi-media installations. The modules, including Cat 3/5e/6 jack, BNC, ST, and F Type, snap directly into the panel. The panel can be mounted to any standard EIA 19" rack, cabinet or wall mount patch panel bracket. Constructed in 1/16" aluminum with a black textured finish, HellermannTyton pre-numbered modular patch panels are available in 12 port, 24 port, and 48 port configurations.



Part #	No. of Ports
P108-12-MOD	12 port
P108-24-MOD	24 port
P108-48-MOD	48 port

### Category 6 GigaBand™ Flush Jack

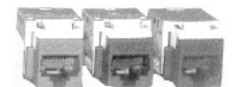
Patented design uses innovative crosstalk cancellation technology. Provides significant margin over TIA Category 6 and ISO Class E requirements. Easily supports emerging applications such as Gigabit Ethernet and 622 Mbps ATM. X = Color: BLK (Black), BLU (Blue), BRN (Brown), FW (Office White), GRN (Green), GRY (Gray), I (Ivory), ORN (Orange), RED (Red), VIO (Violet), W (White), YEL (Yellow).



Part # RJ45FC6-(X)

### Category 5e MegaBand™ Flush Jack

Offers performance that will support Gigabit Ethernet and 622 Mbps ATM applications with complete reliability. Meets and exceeds the requirements of TIA/EIA-568-B.2. X = Color: BLK (Black), BLU (Blue), BRN (Brown), FW (Office White), GRN (Green), GRY (Gray), I (Ivory), ORN (Orange), RED (Red), VIO (Violet), W (White), YEL (Yellow).



Part # RJ45FC5E-(X)

### Voice-Grade Category 3 Modular Jacks

Designed to give the maximum performance in Category 3 application. The 6 position jack can be wired as an RJ11C (1 pair) RJ14C (2 pair) or RJ25C (3 pair) configuration. X = Color: BLK (Black), BLU (Blue), BRN (Brown), FW (Office White), GRN (Green), GRY (Gray), I (Ivory), ORN (Orange), RED (Red), VIO (Violet), W (White), YEL (Yellow).



Part #	Description
RJ11FC3-(X)	6P6C jack
RJ45FC3-(X)	8P8C jack



## HellermannTyton

### Multimedia Modules

HellermannTyton provides modules for various type of connectors. Available in three colors, these modules are adaptable to HellermannTyton faceplates, surface mount boxes, and modular patch panels. Replace "X" in the part number with the following letters for desired color: X= I (ivory), FW (office white) and W (white).

### Blank Insert Module

Designed to cover extra ports in faceplate until future expansion is needed.



Part # BLANK-(X)

### BNC Connector Module

Female-to-female BNC connector designed to accommodate coaxial cable applications. Use with RG58/RG59, RG62 connectors.



Part # BNCINSERT-(X)

### Fiber Module

ST multimode/single mode fiber optic connector designed for fiber optic applications.



Part # FIBERINSERT-(X)

### Shuttered Modular Jacks (Single Outlet)

HellermannTyton's new shuttered jacks offer exceptional Category 6 or Category 5e performance. Its patented slide label system creates a clean appearance. The shutter keeps dirt and dust out when not in use and prevents accidental insertion of an object. Shuttered jacks must be used with HellermannTyton's shuttered jack faceplates.



Part #	Description
RJ45SC6-FW	Category 6 Single Outlet Shuttered Jack
RJ45SC5e-FW	Category 5e Single Outlet Shuttered Jack

### Shuttered Modular Jacks (Triple Outlet)

HellermannTyton's new shuttered jacks offer exceptional Category 6 or Category 5e performance. Incorporating three individual modules, one triple outlet fits into the single gang shuttered faceplate. Its patented slide label system creates a clean appearance. The shutter keeps dirt and dust out when not in use and prevents accidental insertion of an object. Triple outlet modules are also interchangeable with HellermannTyton's AlphaSnap patch panel modules.



Part #	Description
RJ45S3C6-FW	Category 6 Triple Outlet Shuttered Jack
RJ45S3C5E-FW	Category 5e Triple Outlet Shuttered Jack

### Surface Mount Boxes

Feature a compact low profile outline. Ideal for retrofit situations and where internal wall access may not be obtainable. Easy to install and can be fastened to any surface. The box has knockouts on 3 sides to mate with HellermannTyton TSR single channel raceway. The cover snaps on easily and can be removed for adds and changes. Replace X in part number for desired color: I (Ivory), FW (Office White), W (White).



Part #	No. of Ports	Dimensions
SMBDUAL-(X)	Two port	2.32" x 1.08" x 2.77"
SMBQUAD-(X)	Four port	3.25" x 1.07" x 4.50"
SMBSIX-(X)	Six port	4.25" x 1.38" x 6.63"

## HellermannTyton

### Standard Faceplates

Standard faceplates are easily configured, allowing for additions, deletions or changes to connections. This smooth finish, flush mount faceplate enables quick and easy installations. Offered in single gang and dual gang styles, HellermannTyton standard faceplates are offered in 1, 2, 3, 4, 6 and 12 port configurations. HellermannTyton's line of adhesive labels can be used for identification. The 2, 4, and 6 port faceplates are available with identification windows that also cover up the mounting screw. All faceplates come with color-matched mounting screws. (X) = Available colors: I (ivory), FW (office white), W (white), BK (black), B (brown), and GRY (gray).



Part #	Description
FPDG12-(X)	Twelve port flush mount faceplate - dual gang
FPDGSIX-(X)	Six port flush mount faceplate - dual gang
FPDUAL-(X)	Two port flush mount faceplate
FPIIDUAL-(X)	Two port faceplate with identification window
FPIQUAD-(X)	Four port faceplate with identification window
FPIISIX-(X)	Six port faceplate with identification window
FPQUAD-(X)	Four port flush mount faceplate
FPSINGLE-(X)	One port flush mount faceplate
FPSIX-(X)	Six port flush mount faceplate
FPTRIIPLE-(X)	Three port flush mount faceplate

### Horizontal Faceplates

Ideal for use in Infostream™ surface raceway. For applications where raceway is running along the wall, the horizontal faceplates provide proper orientation for jack installation. The horizontal faceplates are also equipped with identification windows. (X) = Available colors: I (ivory), FW (office white), W (white).



Part #	Description
FPIHSINGLE-(X)	Horizontal single port faceplate
FPIHDUAL-(X)	Horizontal dual port faceplate
FPIHTRIPLE-(X)	Horizontal triple port faceplate
FPIHQQUAD-(X)	Horizontal four port faceplate

### Stainless Steel Faceplates

HellermannTyton offers stainless steel plates for heavy duty industrial or institutional applications. Offered in 2, 4, or 6 port single gang versions and 4, 6 or 12 port dual gang versions.



Part #	Description
FPDG12-SS	Twelve port flush mount faceplate
FPDGQUAD-SS	Four port flush mount faceplate - dual gang
FPDGSIX-SS	Six port flush mount faceplate - dual gang
FPDUAL-SS	Two port flush mount faceplate
FPQUAD-SS	Four port flush mount faceplate
FPSIX-SS	Six port flush mount faceplate

### 106 Duplex Faceplate

Designed for power or communications requirements and to cover standard electrical outlets. (X) = Available colors: I (ivory), FW (office white), W (white).



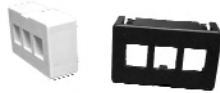
Part #	Description
FP106-(X)	106 Duplex faceplate
FP106DG-(X)	106 Duplex faceplate - dual gang
FP106MF-(X)	106 Duplex 2-port mounting frame with faceplate
FP106MF4-(X)	106 Duplex 4-port mounting frame

## HellermannTyton

### 3-Port Modular Furniture Faceplates

HellermannTyton offers a faceplate to fit into the breakout areas of most modular furniture brands including Haworth®, HON®, and Steelcase®. This three port faceplate easily snaps into standard modular furniture openings. It can accommodate HellermannTyton modular jacks and multimedia modules, providing solutions for voice, coax, audio, video and fiber applications. The furniture faceplate ports can be identified with HellermannTyton faceplate labels. X = Color. Available colors are BLK (Black), FW (office white).

Part # PPFURN3-(X)



### Decorator Faceplates

Offered in single gang or dual gang styles, the decorator faceplate is designed to cover standard electrical outlets. For communications/data applications, these faceplates also have the option of covering a standard decorator mounting frame. These mounting frames attach onto electrical outlet boxes, raceway junction boxes or directly onto the wall, allowing telecommunications installations to appear consistent with electrical outlets. The faceplates and mounting frames are all available in three colors to match HellermannTyton's raceway products, junction boxes, and jacks. X = Color. Available colors are I (Ivory), FW (office white), W (white).



Part #	Description
FPR-(X)	Rectangular Decorator Faceplate
FPRDG-(X)	Rectangular Decorator Faceplate, Dual Gang
FPRMF2-(X)	Rectangular Decorator 2-Port Mounting Frame
FPRMF3-(X)	Rectangular Decorator 3-Port Mounting Frame
FPRMF4-(X)	Rectangular Decorator 4-Port Mounting Frame

### Horizontal and Vertical Shuttered Jack Faceplates

HellermannTyton's new shuttered jack faceplates are available in both horizontal and vertical styles. Designed to be used with shuttered jacks. They can fit up to two single outlets or one triple outlet. If a single faceplate is used, options for a 1U or .5U blank insert are available. Includes an adhesive sticker for easy identification. Horizontal shuttered jack faceplates are designed to be used with HellermannTyton's surface raceway systems.



Part #	Description
FPHSHUT-FW	Horizontal Shuttered Jack Faceplate
FPSHUT-FW	Vertical Shuttered Jack Faceplate

### Modular Faceplates

HellermannTyton's line of modular faceplates provides a great amount of flexibility. Offered in single gang or dual gang styles, these faceplates can be used with flush or angled modules. Up to six angled outlets can be installed in a single gang faceplate, providing an efficient solution for high capacity applications. X=color. Available colors are: I (Ivory), FW (office white), W (white).



Part #	Description
FPM-(X)	Modular Faceplate
FPMDG-(X)	Modular Dual Gang Faceplate
FPMIB-(X)	Modular Faceplate Blank Insert
FPMIFS-(X)	Modular Faceplate Insert- single w/icons
FPMIFD-(X)	Modular Faceplate Insert-double w/icons
FPMIAD15-(X)	Modular Faceplate Insert- angled double w/ icons
FPMIDB-(X)	Modular Faceplate Insert- D subminiature blank
FPMISC-(X)	Modular Faceplate Insert- SC duplex adapter w/ phosphor bronze sleeve

## HellermannTyton

### Inserts for Shuttered Faceplates

HellermannTyton's angled insert snaps into the shuttered faceplate to provide for a quick and easy installation and allows two single outlets or one triple outlet in a single gang faceplate. This optimizes the space available as well as relieves cable stress by providing a smooth slope for the cable. Two sizes of blank inserts are available. When using a single outlet in the faceplate, choose either 1 x 1U or 2 x 0.5U inserts.



Part #	Description
FPAININSERT-FW	Angled Insert for Shuttered Faceplate
FP5BLANK-FW	0.5U Blank Insert
FP1BLANK-FW	1U Blank Insert

### Category 5e Inter-Lock Outlet

HellermannTyton's Category 5e inter-lock outlet provides a quick and effective method of controlling network access. Used with standard HellermannTyton single gang shuttered faceplates, the inter-lock outlet is easy to use. A simple turn of the key is all it takes to enable or disable LAN line access by cutting off electrical connection to the orange wire, pin #2. Supplied with two keys per outlet, the key cannot be removed while in the "on" position.



Part # RJ45LC5E-FW

### Field Installation Kits

Kits include 110 wiring blocks with standoff legs, 100 pair with 4 pair clips, and identification label holders with white labels.



Part # T110KIT1004

### Rack Mountable 110 Blocks

Rack mount 100 pair 110 block with 4 pair Connecting Block Clips. For applications that require fastening a 110 block to a 19" rack or cabinet, HellermannTyton provides the 100 pair and 300 pair blocks in a rack mountable version.



Part # T110RM100-4

### Category 6 Rated 110 Wiring Blocks

Designed to support Category 6 cabling applications as specified in TIA/EIA-568-B.2-1 with unique spacing that provides superior NEXT performance. These wiring blocks can be used as a consolidation point in HellermannTyton's GigaBand channel. A standard punch down tool can be used to terminate the blocks. They are available in a number of different configurations for specific connectivity applications. To run cable behind the blocks or for wall mounting, the Category 6-96 pair blocks and 288 pair blocks are available with standoff legs while the 96 pair blocks are offered in a low profile style without legs. The clips are available only in a 4-pair configuration for optimal performance. \* Label colors include orange (OR), green (GR), purple (PL), gray (GY), blue (BL), brown (BR), yellow (YL), red (RD) and white (WT).



Part #	Description
T110WB96	96 Pair 110 Category 6 Wiring Block Base
T110WBL96	96 Pair 110 Wiring Block Base with Legs
T110WBL288	288 Pair 110 Wiring Block Base with Legs
T11046	Category 6 4 Pair Clip



## HellermannTyton



### Category 6 Rated 110 Block

To minimize labor and time, HellermannTyton offers field installation kits. These kits include Category 6 110 wiring blocks with standoff legs, 4 pair clips, and identification label holders with white labels.



Part #	Description
T110KIT964	96 Pair Category 6 110 Block Kit with 4 Pair Clips
T110KIT2884	288 Pair Category 6 110 Block Kit with 4 Pair Clips

### Category 6 Rated Rack Mountable 110 Block Kits

For applications that require fastening a 110 block to a 19" rack or cabinet, HellermannTyton provides the 96 pair, 192 pair and 288 pair block kits in a rack mountable version. The 96 pair kit includes a cable trough for cable management.



Part #	Description	Rack Units
T110RM96-4CT	Rack Mount 96 Pair Category 6 110 Block Kit with Cable Trough	2
T110RM192-4	Rack Mount 192 Pair Category 6 110 Block Kit with 4 Pair Clips	2
T110RM288-4	Rack Mount 288 Pair Category 6 110 Block Kit with 4 Pair Clips	3
T110RMCT	Rack Mount Cable Trough	1

### Category 5e Rated 110 Wiring Blocks

HellermannTyton's 110 wiring blocks provide a dependable, long term system to support data and voice applications. These Category 5e blocks offer an easy-to-install and economical solution for network managers. They are available in a number of different configurations for specific connectivity applications. To run cable behind the blocks or for wall mounting, the Category 5e 100 pair and 300 pair blocks are available with standoff legs while the 100 pair blocks are offered in a low profile style without legs.



Part #	Description
T110WBL100	100 Pair 110 Wiring Block Base with Legs
T110WBL300	300 Pair 110 Wiring Block Base with Legs



### Category 6+ Component Level Mini Patch Panels

Available in 12-port size and are ideal for installations where space is at a premium and open bay racks cannot be used. Panels are provided mounted to either an 89D bracket or in a hinged version, both of which allow for easy access to the back of the panel for termination to 110 connectors. Both panels exceed TIA/EIA-568-B.2-1 component, permanent link and channel level performance specifications.



Part # 12458M-C6C

### Category 6+ Component Level Shielded Patch Panel

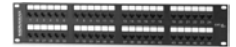
This patch panel provides the ability to terminate fully shielded Category 6 cable. Panels are designed to exceed TIA/EIA-568-B.2-1 component level specifications for superior performance. The panel features front labeling areas and comes with a rear cable management bar that mounts easily to the back of the panel. 24-Port, 1.75" High.



Part # 24458S-C6C

### Category 6+ Component Level Patch Panels

Designed to exceed TIA/EIA-568-B.2-1 component, permanent link an channel level performance specifications providing usable bandwidth beyond 250 MHz and are backward compatible with lower level cabling products. These high-density panels are available in 12 through 96 port versions and feature enhanced front and rear labeling features for easy circuit identification. Constructed for maximum strength and durability and feature a fully enclosed, 6-port modular design, which provides flexibility and protection of printed circuitry during termination. Panels include an integrated cable management feature for cable routing and strain relief requirements. An optional cable management bar, is available for improved routing and strain relief functions.



Part #	Description
12458MD-C6C	12-Port, 1.75" High
24458MD-C6C	24-Port, 1.75" High
48458MD-C6C	48-Port, 3.50" High
96458MD-C6C	96-Port, 7.00" High
SMB-350	Panel Mount Cable Management Bar, 3.5" Deep

### Category 5e+ Component Level Shielded Patch Panel

Provides a fully shielded design for cabling applications using 4-pair screened twisted-pair cables. High-density panels, with a removable cover for EMI and RFI protection and allows for easy access to 110 terminations. Engineered to exceed TIA/EIA-568-B.2 specifications. 24-Port, T568A/B Wiring, 1.75" High.



Part # 24458S-C5E

### Category 5e Feed-Thru Patch Panels



### Category 5e High Density Feed-Thru Patch Panels

Provides from 12, 24, 48 and 96 modular coupling ports, while maintaining Category 5e performance. Color-coded icon tabs can be ordered for port identification.

Part #	Description
12458FTHD-C5E	12-Port, 1.75" High
24458FTHD-C5E	24-Port, 1.75" High
48458FTHD-C5E	48-Port, 3.50" High
96458FTHD-C5E	96-Port, 7.00" High

### Category 5e Standard Density Feed-Thru Patch Panels

Provides from 12 to 48 modular coupling ports, while maintaining Category 5e performance. Color-coded icon tabs can be ordered for port identification.

Part #	Description
12458FT-C5E	12-Port, 1.75" High
16458FT-C5E	16-Port, 1.75" High
24458FT-C5E	24-Port, 3.50" High
32458FT-C5E	32-Port, 3.50" High
48458FT-C5E	48-Port, 5.25" High

## Category 5e+ Component Level Patch Panels

Designed to exceed TIA/EIA-568-B.2 component, permanent link and channel level performance specifications providing usable bandwidth beyond 155 MHz. These high-density panels feature enhanced front and rear labeling features for easy circuit identification. Uses and easy to read color-coded wiring label. Panels are constructed for maximum strength and durability and feature a fully enclosed, 6-port modular design, which provides flexibility and protection of printed circuitry during termination. Rear termination is made quick and easy using a 4-pair inline 110 type connector compatible with standard multi-pair impact tool to reduce installation time or single position 110 or Krone termination tool. Panels include an integrated cable management feature for cable routing and strain relief requirements. An optional cable management bar is available.



Part #	Description
12458MD-C5E	12-Port, 1.75" High
24458MD-C5E	24-Port, 1.75" High
48458MD-C5E	48-Port, 3.50" High
96458MD-C5E	96-Port, 7.00" High

## Category 5e Modular-110 Mini Wall Mount Panels

T568A and T568B wiring.



Part #	Description
12458M-C5E	12-Port Cat5e Mini Panel with 89D bracket
12458MH-C5E	12-Port Cat5e Mini Hinged Panel

## Category 5e+ Wall Mount Jack Panels with Standoff Legs

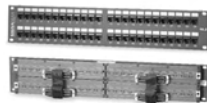
Category 5e+ Wall Mount Jack Panels connections are enclosed in a protective housing featuring a removable front cover for easy access to the front facing RJ-45 and 110 connectors. Panels are provided with standoff legs for routing cables behind the panel. The jack panels accommodated both T568A and T568B wiring.



Part #	No. of Ports
12458JPL-C5E	12-Port
24458JPL-C5E	24-Port
36458JPL-C5E	36-Port

## Category 5 10/100BaseT/TX Telco Patch Panels

Provides the ability to connect to 10/100BaseTX switches with Telco style or RJ-45 interface connectors, while maintaining Category 5/5e performance throughout the cabling system. The panels are available in 24- and 48-port sizes with RJ-45 connectors wired to 50 position (25 pair) Telco style connectors using standard pin configuration.



Part #	Description
24454-C5MT	24-Port, Male, 1.75" High
48454-C5MT	48-Port, Male, 1.75" High
24454-C5FT	24-Port, Female, 3.50" High
48454-C5FT	48-Port, Female, 3.50" High

## Category 3 Modular-110 Patch Panels

Available in 12, 24, 28 and 96 port sizes and support RJ-12 6-wire and RJ-45 8-wire USOC wiring systems. Panels are constructed for maximum strength and durability and can be terminated with either multi-pair or single position 110 or Krone termination tools. Panels feature a write-on surface to provide port identification on both the front and rear termination areas. Panels include an integrated cable management/strain relief system for improved routing and strain relief requirements.

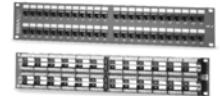
## RJ-45 8 Wire Modular Patch Panels

Other size panels are available.



Part #	Description
12458-C4U	12-Port, 1.75" high
24458-C4U	24-Port, 1.75" high
48458-C4U	48-Port, 3.50" high
96458-C4U	96-Port, 7.00" high

## RJ-12 6 Wire Modular-110 Patch Panels



Part #	Description
12116-C4U	12-Port, 1.75" high
24116-C4U	24-Port, 1.75" high
48116-C4U	48-Port, 3.50" High
96116-C4U	96-Port, 7.00" high

## Category 3 Modular-Telco Patch Panels

Category 3 Modular-Telco Patch Panels support RJ-11 2-wire, RJ-11 4-wire, RJ45 2 wire, RJ-45 4 wire USOC wiring systems. Each 50 position Telco connector is provided with both Velcro strain relief brackets and hex sockets to secure 25 pair cables with either 90° or 180° cable exit. Panels feature a write-on surface to provide port identification on both the front and rear termination areas. Panels included and integrated cable management/strain relief system for improved routing and strain relief requirements. For female 25-pair connector substitute "M" for "F" in the part number.



## RJ-11 2 Wire

Part #	Description
24112-C3MU	24-Port, Male, 1.75" High
48112-C3MU	48-Port, Male, 3.50" High
96112-C3MU	96-Port, Male, 7.00" High

## RJ-11 4 Wire

Part #	Description
24114-C3MU	24-Port, Male, 1.75" High
48114-C3MU	48-Port, Male, 3.50" High
96114-C3MU	96-Port, Male, 7.00" High

## RJ-45 2 Wire

Active Pins 4 & 5. USOC Wiring.

Part #	Description
24452-C3MU	24-Port, Male, 1.75" High
48452-C3MU	48-Port, Male, 3.50" High
96452-C3MU	96-Port, Male, 7.00" High

## RJ-45 4 Wire

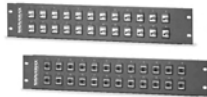
Active Pins 3-6. USOC Wiring.

Part #	Description
24454-C3MU	24-Port, Male, 1.75" High
48454-C3MU	48-Port, Male, 3.50" High
96454-C3MU	96-Port, Male, 7.00" High

# Data Communications



## Multimedia Panels



### Multimedia Patch Panels

Multimedia panels are available pre-configured with F-Type or BNC feed-thru connectors. The female/female F-Type 75 ohm connectors are rated for 1 GHz performance. The BNC panels are provided female/female BNC feed-thru connectors.

### Multimedia Patch Panels

Part #	Description
12(CT)-FT	12-Port
16(CT)-FT	16-Port
24(CT)-FT	24-Port
32(CT)-FT	32-Port
48(CT)-FT	48-Port

### 12-Port Multimedia Mini Wall Mount Panels

12-Port Multimedia Mini Wall Mount Panels are available pre-configured with Category 5e feed-thru or BNC feed-thru connectors. Panels can be provided with an 89D bracket for mounting or in a hinged version for easy access to the back of the panels.

Part #	Description
12M(CT)-FT	Panel with 89D Bracket
12MH(CT)-FT	Multimedia Hinged Panel
12U-M89	Unloaded Panel w/89D Bracket
12U-MH	Unloaded Hinged Panel

### Standard Density Unloaded Multimedia Panels

Unloaded panels provide the ability to field configure panels using a variety of connector modules including Category 6+ and Category 5e+ jacks as well as a wide range of multimedia modules.

Part #	Description	Description
12U-MMP	12-Port	1
16U-MMP	16-Port	1
24U-MMP	24-Port	2
32U-MMP	32-Port	2
48U-MMP	48-Port	3

### 48-Port Angled High Density Unloaded Multimedia Panels

This multimedia panel has the added feature of angled design to help route patch cords to vertical rack or cabinet mounted cable management. This unique feature eliminates the need for horizontal cable management panels, which provides additional rack space in high density applications. The panel provides the flexibility to field configure panels using a variety of connector modules including Category 6+ jacks as well as a wide range of copper, fiber and audio/video multimedia modules. 1.75" High.



Part #	Description
12U-HDMMP	12-Port, 1.75" High
24U-HDMMP	24-Port, 1.75" High
48U-HDMMP	48 Port, 1.75" High
96U-HDMMP	96-Port, 7.00" High

### Category 6+ Component Level Keystone Jacks

Designed to meet the need for high-bandwidth applications, or to anticipate the need for extreme future requirements. Category 6+ connectors are slim in profile for the highest density applications, and are engineered to exceed all TIA/EIA-568-B.2-1 Category 6 component, permanent link and channel level requirements and are fully tested beyond 250 MHz. Jacks support both T568A and T568B wiring for maximum flexibility using an easy to read color-code wiring labels and can be terminated using standard single position 110 or Krone termination tools. Jacks feature the ability to mount either color-coded icon tabs for service identification or dust covers to protect unused jacks from dust and other contaminants. Standard color is Light Ivory. For other colors, add the following to the part number: BK (Black), BU (Blue), GN (Green), OR (Orange), RD (Red), WH (White), YE (Yellow).



Part #	Description
KJ458-C6C	Category 6+ Keystone Jack, 180° Cable Exit
KJ458S-C6C	Category 6+ Shielded Keystone Jack

### Category 6+ Channel Level Keystone Jacks

Designed to meet the need for high-bandwidth applications, or to anticipate the need for extreme future requirements. Slim in profile for the highest density cabling applications, and are engineered to exceed TIA/EIA-568-B.2-1 Category 6 specifications. Jacks support both T568A and T568B wiring for maximum flexibility and can be terminated using standard single position 110 or Krone termination tools.



Part #	Color
KJ458-C6	Light Ivory
KJ458-C6-BK	Black
KJ458S-C6-BU	Blue
KJ458S-C6-GN	Green
KJ458S-C6-OR	Orange
KJ458S-C6-RD	Red
KJ458S-C6-WH	White
KJ458S-C6-YE	Yellow

### Category 5e+ Component Level Keystone Jacks

Provides a sound platform for supporting all today's network operating systems including Gigabit Ethernet. Installs easily with insulation displacement technology (IDC) to provide a gas-tight wire-to-conductor interface. Can be terminated with industry-standard 110 or Krone termination tools and feature color-coding for both T568A and T568B wiring. Jacks feature the ability to mount either color-coded icon tabs for service identification or dust covers to protect unused jacks. Jacks exceed specifications as defined in TIA/EIA-568-B.2.



### Category 5e+ Component Level Shielded Keystone Jacks

Part # KJS458-C5E

### Category 5e+ Component Level Keystone Jacks

Part #	Color
KJ458-C5E	Light Ivory
KJ458-C5E-BK	Black
KJ458-C5E-GN	Green
KJ458-C5E-OR	Orange
KJ458-C5E-RD	Red
KJ458-C5E-WH	White
KJ458-C5E-YE	Yellow
KJ458-C5E-BU	Blue

# Data Communications



## Category 6+ Connector Modules

Available in a single and dual port configurations, which exceed TIA/EIA-568-B.2-1 component, permanent link and channel level performance specifications and are fully tested beyond 250MHz for use in the most bandwidth demanding applications. Connector modules feature a front-loading snap-in design, allowing quick and easy outlet configuration and field changes. Modules are compatible with both T568A and T568B wiring systems using an easy to read color-coded wiring label and can be terminated with a standard 110 or Krone single position tool. New contact design. Category 6+ shielded single and dual port modules are also available to provide terminations for shielded cabling systems. Standard color is Light Ivory. For White add -WH to part number.



## Category 6+ Component Level Connector Modules

Part #	Description
SCM145-C6C	1-Port
SCM245-C6C	2-Port

## Category 6+ Component Level Shielded Connector Modules

Part #	Description
SCM145S-C6C	1-Port
SCM245S-C6C	

## Keystone Blank Modules

Used to cover up unused port opening on keystone faceplates and surface mount boxes.



Part # CMK-BL

## Single and Double Gang Faceplates

Provides a mounting method for a broad range of cabling media modules. Feature front loading of connector modules with a simple snap-in process allowing additions or outlet configuration changes to be made quickly. Have both top and bottom labeling windows - supplied with white cards and clear label covers. Single gang can accommodate up to three connector modules for a total of 6 connections. The double gang plate provides double the capacity for up to 6 modules and 12 connections. Mounts easily to standard NEMA wall boxes or to surface-boxes available in light ivory or white. For white, add -WH.

Part #	Description
SGF-06	Single gang faceplate with 2 ID labels, 2 clear ID covers, 2 color-coded screw covers and mounting screws.
DGF-12	Double gang faceplate with 4 ID labels, 4 clear ID covers, 4 color-coded screw covers and mounting screws.

## Multimedia Connector Modules

### LC Fiber Connector Module

The modules are available with one or two duplex LC feed-through couplers. SM/MM adapters use phosphor bronze sleeves. SM adapters use zirconic ceramic.



Part #	No. of Ports	Description
SCM-1LC	1-Port	MM/SM Module, 180° Exit
SCM-1LC-C	1-Port	SM Module, 180° Exit
SCM-1LC-A	1-Port	MM/SM Module, 45° Exit
SCM-1LC-C-A	1-Port	SM Module, 45° Exit
SCM-2LC	2-Port	MM/SM Module, 180° Exit
SCM-2LC-A	2-Port	MM/SM Module, 45° Exit
SCM-2LC-C-A	2-Port	SM Module, 45° Exit

## Multimedia Connector Modules (cont.)

### MT-RJ Fiber Connector Module

MTRJ Fiber modules are available with one or two MT-RJ feed-thru couplers. MM/SM Module.



Part #	No. of Ports	Description
SCM-1MTRJ	1-Port	180° Exit
SCM-1MTRJ-A	1-Port	45° Exit
SCM-2MTRJ	2-Port	180° Exit
SCM-2MTRJ-A	2-Port	45° Exit

### SC 2 Fiber 2-Port Connector Module

SC Fiber modules provide a duplex SC feed-thru couplers. SM/MM adapters use phosphor bronze sleeves. SM adapters use zirconic ceramic.



Part #	Description
SCM-2SC	MM/SM Module, 180° Exit
SCM-2SC-C	SM Module, 180° Exit
SCM-2SC-A	MM/SM Module, 45° Exit
SCM-2SC-C-A	SM Module, 45° Exit

### ST 2 Fiber 2-Port Connector Module

ST Fiber modules provide two ST feed-thru couplers. SM/MM adapters use phosphor bronze sleeves. SM adapters use zirconic ceramic.



Part #	Description
SCM-2ST	MM/SM Module, 180° Exit
SCM-2ST-C	SM Module, 180° Exit
SCM-2ST-A	MM/SM Module, 45° Exit
SCM-2ST-C-A	SM Module, 45° Exit

### Single & Dual Port Keystone Jack Connector Modules

Available in both a single and dual port version. Both modules accommodate Category 6, 5e and 3 Voice grade keystone jacks. Standard color is Light Ivory. For White add -WH to the end of the part number.



Part #	No. of Ports
SCM-1-KU	1-Port
SCM-2-KU	2-Ports

## Keystone Jack Accessories

### Keystone Jack Dust Covers and Icon Tabs

XX = Colors: BK (Black), BU (Blue), GN (Green), OR (Orange), RD (Red), WH (White), YE (Yellow), IV (Light Ivory).



Part #	Description
DDC-50D-(XX)	Dust Cover, Data
DDC-50V-(XX)	Dust cover, Voice
DDC-50B-(XX)	Dust Cover, Blank
DIT-50D-(XX)	Icon Tabs, Data
DIT-50V-(XX)	Icon Tabs, Voice
DIT-50B-(XX)	Icon Tabs, Blank

### Keystone Jack Termination Fixture

Signamax termination fixture holds KJJ126 Voice Jack Series, KJ458 Cat5e and Cat6 Series for easy termination.



Part # KJ-TF

# Data Communications



## 1-, 2-, and 4-Port Surface Mount Multimedia Boxes

Standard color is light ivory. For white, add -WH to part number.



Part #	Description
SMK-1	1-Port Surface Mount Box
SMK-2	2-Port Surface Mount Box
SMK-4	4-Port Surface Mount Box

## 12-Port Surface Mount Multimedia Box

Provides the ability to mix and match up to 12 copper, fiber or other media types in one location. The box can be mounted over a single or double gang NEMA wall box. The box is designed to accommodate industry-standard surface raceway for a clean transition to the box. Individual connector ports can be color-coded using icons, and additional labeling areas are provided to suit the application. Standard color is light ivory. For white, add -WH to part number.



Part # SMK-12

## 1- and 2-Module Surface Mount Multimedia Boxes

A convenient way to mount connector modules in the work area, for any cable type. These single and dual module boxes consolidate cabling from behind the wall, on the wall or from surface raceways. These boxes are ideal for mixing cable types, and offer knockouts in the covers that permit a smooth transition to industry-standard raceways. Standard color is Light Ivory. For White, add -WH.



Part #	Description
SMMB-1	1-Module Box
SMMB-2	2-Module Box

## 3-Module Surface Mount Multimedia Box

The three-module surface-mount multi-media box has two integral cable management spools, for storing slack cable lengths. Port identification can be accomplished two ways - using color-coded icons on the box cover, and port identification on the connector modules. These surface boxes are compatible with all Signamax Modular Outlet System inserts for copper and fiber optic cables. Standard color is Light Ivory. For White, add -WH.



Part # SMMB-3F

## Single Gang Keystone Jack Faceplates with Labeling Windows

Single gang faceplates allow for mounting any combination of keystone jacks and multimedia modules. These faceplates feature a top and bottom designation labeling window for convenient faceplate identification. Plates are supplied with mounting screws, label cards and clear covers. Standard color is Ivory. Add -WH at end of part number to order White.



Part #	No. of Ports
SKFL-1	1-Port
SKFL-2	2-Port
SKFL-3	3-Port
SKFL-4	4-Port
SKFL-6	6-Port

## Keystone Faceplates

### Single Gang Angled Faceplate with Designation Labeling

These plates allow an angled cable exit to prevent damage and help maintain the bend radius of patch cords. Faceplates feature a top and bottom designation labeling window for convenient faceplate identification. Plates are supplied with mounting screws, label cards and clear covers. Standard color is light ivory. For white, add -WH to part number.



Part #	Description
SKFLA-2	2-Port Angled Faceplate
SKFLA-4	4-Port Angled Faceplate

### Single Gang Brushed Stainless Steel Faceplates

Allow mounting any combination of keystone jacks and multimedia modules. These faceplates allow for flush mounting of jacks for a clean appearance. Stainless steel faceplates are ideal for use in environments that require greater durability and a sanitary, easy-to-clean solution.



Part #	Description
SSKF-1	1-Port Faceplate
SSKF-2	2-Port Faceplate
SSKF-3	3-Port Faceplate
SSKF-4	4-Port Faceplate
SSKF-6	6-Port Faceplate

### Single Gang Faceplate without Labeling Windows

Allow for mounting any combination of keystone jacks and multimedia modules. Standard color is light ivory. For white, add -WH to part number.



Part #	Description
SKF-1	1-Port Faceplate
SKF-2	2-Port Faceplate
SKF-3	3-Port Faceplate
SKF-4	4-Port Faceplate
SKF-6	6-Port Faceplate

### Double Gang Stainless Steel Faceplates

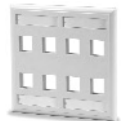
Allow for flush mounting of jacks and for a clean appearance. Stainless steel faceplates are ideal for use in environments that require greater durability and a sanitary, easy-to-clean solution.



Part #	Description
DSKF-8	8-Port Faceplate
DSKF-12	12-Port Faceplate

### Double Gang Faceplate without Labeling

Allow for mounting any combination of keystone jacks and multimedia modules.



Part #	Description
DKF-8	8-Port Double Gange Keystone Faceplate
DKF-12	12-Port Double Gang Keystone Faceplate
DKFLA-8	8-Port Double Gang Angled Keystone Faceplate

# Data Communications



## Keystone Faceplates (cont.)

### Double Gang Faceplates with Designation Labeling Windows

Allow for mounting any combination of keystone jacks and multimedia modules. These faceplates feature a top and bottom designation labeling window for convenient faceplate identification. Plates are supplied with mounting screws, label cards and clear covers. Standard color is light ivory. For white, add -WH to part number.

Part #	Description
DGFK-12	12-Port Faceplate
DGFK-8	8-Port Faceplate

### Decora Style Faceplates and Keystone Adapters

Compatible with all keystone jacks and multimedia modules. Faceplates are available in single and double gang versions. Adapters are ideal for combining data, voice, audio and video in one outlet. Standard color is light ivory. For white, add -WH to part #.



Part #	Description
SKFD-1	Single Gang Faceplate
DKFD-2	Double Gang Faceplate
DA-2	2-Port Decora Adapter
DA-3	3-Port Decora Adapter
DA-4	4-Port Decora Adapter

### Drywall Faceplate Mounting Brackets

Drywall brackets provide a quick and secure installation of single and double gang faceplates. This not only speeds installation time, but makes moves and adds much easier to accomplish. The 22 gauge material thickness is reinforced at the mounting tab, to remain in proper position, throughout the life of the installation. Device plate mounting holes are pre-tapped for plate fastening.



Part #	Description
SGF-MB	Single Gang Drywall Mounting Bracket
DGF-MB	Double Gang Drywall Mounting Bracket

### Surface Mount Faceplate Boxes

Surface mount faceplate boxes are available to accommodate both single gang and double gang faceplates. Boxes provide knock outs on all sides for easy cable entry and are supplied with mounting hardware. Standard color is Light Ivory. For White add -WH to the end of the part number.



Part #	Description
SMB1-SG	Single Gang Surface Mount Faceplate Box
SMB1-DG	Double Gang Surface Mount Faceplate Box

### 106 Type Faceplates and Adapters

Standard color is Ivory. Add -WH at end of part number to order White.

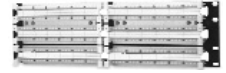


Part #	Description
SKF-106	Single gang
106A-2	2-Port
106A-4	4-Port

## Category 6 110 Rack Mount Wiring Block

96-Pair

Part # RM696PR



## Category 6 110 Wiring Blocks



Part #	Description
110WB6-48PR-L	Category 6 48-pair 110 wiring block with mounting legs
110WB6-48PR	Category 6 48-pair 110 wiring block without mounting legs
110WB6-96PR-L	Category 6 96-pair 110 wiring block with mounting legs
110WB6-96PR	Category 6 96-pair 110 wiring block without mounting legs
110WB6-288PR-L	Category 6 288-pair 110 wiring block with mounting legs
110WB6-288PR	Category 6 288-pair 110 wiring block without mounting legs

## Category 6+ 110 Wiring Block Kits

Part #	Description
WBK6-48PRL4	48-Pair Kit w/Mounting Legs, (12) 4-Pair Connecting Clips & 1 Designation Label/Clear Holders
WBK6-48PR4	48-Pair Kit w/o Mounting Legs, (12) 4-Pair Connecting Clips & 1 Designation Label/Clear Holders
WBK6-96PRL4	96-Pair Kit w/Mounting Legs, (24) 4-Pair Connecting Clips & 2 Designation Labels/Clear Holders
WBK6-96PR4	96-Pair Kit w/o Mounting Legs, (24) 4-Pair Connecting Clips & 2 Designation Labels/Clear Holders
WBK6-288PRL4	288-Pair Kit w/Mounting Legs, (72) 4-Pair Connecting Clips & 3 Designation Labels/Clear Holders
WBK6-288PR4	288-Pair Kit w/o Mounting Legs, (72) 4-Pair Connecting Clips & 3 Designation Labels/Clear Holders

## Category 6 110 Connecting Clips

4-pair 110 IDC connecting clip



Part # 110CB6-4PR

## Category 6+ and 5e+ 110 Wiring Block Kits

These kits include everything needed to assemble a fully configured cross connect field. Wiring block kits are available with or without mounting legs and are packaged with the appropriate number of designation strips and clear holders.



Part #	Description
WBK-50PRL4	50-Pair Kit w/Mounting Legs, (10) 4-Pair, (2) 5-Pair Connecting Clips & 1 Designation Label/Clear Holders
WBK-50PR4	50-Pair Kit w/o Mounting Legs, (10) 4-Pair, (2) 5-Pair Connecting Clips & 1 Designation Label/Clear Holders
WBK-100PRL4	100-Pair Kit w/Mounting Legs, (20) 4-Pair, (4) 5-Pair Connecting Clips & 2 Designation Labels/Clear Holders
WBK-100PR4	100-Pair Kit w/o Mounting Legs, (20) 4-Pair, (4) 5-Pair Connecting Clips & 2 Designation Labels/Clear Holders
WBK-300PRL4	300-Pair Kit w/Mounting Legs, (60) 4-Pair, (12) 5-Pair Connecting Clips & 3 Designation Labels/Clear Holders
WBK-300PR4	300-Pair Kit w/o Mounting Legs, (60) 4-Pair, (12) 5-Pair Connecting Clips & 3 Designation Labels/Clear Holders

# Data Communications



## Category 5e 110 Wiring Blocks and Accessories

### Wiring Blocks

Wiring blocks accommodate a range of conductor sizes from 22 to 26 AWG solid or stranded and are designed to exceed Category 5 Enhanced specifications. Available in 50, 100 and 300 pair sizes, they can be configured to build a cross connect system for any size or application. Wiring blocks can be ordered with mounting legs for routing cable behind the block, or without legs where space is limited.



Part #	Description
110WB-100PR	100-Pair 110 Wiring Block without Mounting Legs
110WB-100PR-L	100-Pair 110 Wiring Block with Mounting Legs
110WB-300PR	300-Pair 110 Wiring Block without Mounting Legs
110WB-300PR-L	300-Pair 110 Wiring Block with Mounting Legs
110WB-50PR	50-Pair 110 Wiring Block without Mounting Legs
110WB-50PR-L	50-Pair 110 Wiring Block with Mounting Legs

### 110 IDC Connecting Clips

Accepts 22-26 AWG solid or stranded conductors and are available in 3, 4 and 5 pair sizes. Each IDC connecting block is color coded for easy conductor placement.

Part #	Description
110-CAP	2-Pair 110 Stuffer Cap
110CB-3PR	3-Pair Clip
110CB-4PR	4-Pair Clip
110CB-5PR	5-Pair Clip

### Patch Cord and Cable Management Troughs

Used above, below or between wiring blocks to facilitate patch cord and cable management. Available with or without standoff legs to fit the needs of any application.

Part #	Description
110-CMT	Without Mounting Legs
110-CMT-L	With Mounting Legs
110-RMCMT	Rack Mount Patch Cord and Cable Management Trough, 1.75"H

### 110 Field Installable Patch Cord Plugs

Available in 1,2,3 and 4-pair sizes and accommodate 24 to 26 AWG stranded jacketed cable. Plugs are easily assembled in the field. The snap together designed plugs are polarized to ensure a proper connection to the connecting blocks.

Part #	Description
110-1PRP	1-Pair
110-2PRP	2-Pair
110-3PRP	3-Pair
110-4PRP	4-Pair

### Category 5e+ 110 Rack Mount Wiring Block Kits

Kits can be specified with 3 or 5-pair connecting clips.



Part #	Description
RM100PR	100-Pair 110 Rack Mount Wiring Blocks, 1.75"H x 19"W
RM200PR	200-Pair 110 Rack Mount Wiring Blocks, 3.50"H x 19"W
RWBK-100PR4	100-Pair Rack Mount Kit w/(20) 4-Pair, (4) 5-Pair Connecting Clips & 2 Designation Labels/Clear Holders
RWBK-200PR4	200-Pair Rack Mount Kit w/(40) 4-Pair, (6) 5-Pair Connecting Clips & 4 Designation Labels/Clear Holders

### Self-Adhesive Designation Labeling Sheets

Category 6+ and Category 5e+ patch panel jacks & 110 wiring connections can be labeled using specific color-coded labels that can be either hand-printed on-site or custom-printed using ink-jet or laser printer. Templates can be downloaded from the Signamax web site, to help installers lay out label sheets for custom printing. Front-panel labels are available in TIA/EIA 606 colors, and rear-panel labels are available in white. Labels are supplied on 8.5" x 11" sheets suitable for printing using most ink jet and laser printers. For use with Cat 5e panels only. For standard color substitute (XX) for color in P/N. BU (Blue), GN (Green), OR (Orange), RD (Red), WH (White), YE (Yellow).



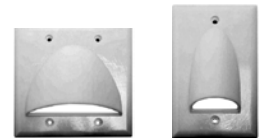
Part #	Description
DLF6-(XX)	Front Panel Designation Label Sheet
DLR6-WH	Rear Panel Designation Label Sheets (White Only)

### Port and Faceplate Designation Labels

For label color, substitute XX with: BU (Blue), WH (White), GN (Green), YE (Yellow), OR (Orange), IV (Light Ivory), RD (Red).



Part #	Description
DL-112-(XX)	Port Designation Labels, Sheet of 112 Labels, Custom Printable
DL-30-(XX)	Designation Icon Labels, Sheet of 30 Assorted Labels (6-Data, 6-Voice, 2-Printer, 2-Fax, 2-LAN, 2-Modem, 2-Video, 8-Blank)



### Single and Dual Bulk Cable Wallplates

Part #	Description
VHT-8101	Single gang - Ivory
VHT-8102	Single gang - White
VHT-8103	Single gang - Black
VHT-8201	Dual gang - Ivory
VHT-8202	Dual gang - White
VHT-8203	Dual gang - Black

### Modular Plugs



Part #	Color
NMP-6111	6P6C RJ-12 flat stranded mod plug - 15 mic gold
NMP-6221	6P6C RJ-12 round solid mod plug - 15 mic gold
NMP-6225	6P6C modular plug solid/stranded - 50 mic gold plated contacts
NMP-8111	8P8C RJ-45 flat stranded mod plug - 15 mic gold
NMP-8215	8P8C RJ-45 round stranded mod plug - 50 mic gold
NMP-8225	8P8C round solid or stranded mod plug - 50 mic gold
NMP-8325	8P8C 3 prong RG-45 mod plug round solid cable - 50 mic gold
NMP-8425	8P8C round solid/stranded shielded - 50 mic gold

# Data Communications



## Category 6 Patch Panels

### 110 / KRN Hybrid

Standard spacing for mounting on 19" EIA standard racks. 110 shell, Krone Contact Hybrid Terminals. 110 tool can be used to terminate. Gold plated modular jack contacts. Wiring is color coded for both 568A and 568B codes. Port label with plastic colors.



Part #	Description
1K0-PP6-168	16 Ports, 1U
1K0-PP6-248	24 Ports, 1U
1K0-PP6-328	32 Ports, 2U
1K0-PP6-488	48 Ports, 2U

### 110 Termination

Standard spacing for mounting on 19" EIA standard racks. 110 terminals and gold plated modular jack contacts. Wiring is color coded for both 568A and 568B codes.



Part #	Description
110-PP6-128	12 Ports, 1U
110-PP6-248	24 Ports, 1U
110-PP6-488	48 Ports, 2U

## Category 5 Enhanced Patch Panels

### 110 Termination - RJ45 Ports

Standard spacing for mounting on 19" EIA standard racks. Gold plated modular jack contacts and 110 termination. Clear caps and nylon wire guide included. Wiring is color coded for both 568A and 568B codes.



Part #	Description
110-PP5E-128	12 Ports, 1U
110-PP5E-168	16 Ports, 1U
110-PP5E-248	24 Ports, 1U
110-PP5E-328	32 Ports, 2U
110-PP5E-488	48 Ports, 2U
110-PP5E-968	96 Ports, 4U

### Vertical 110 Termination

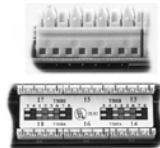
Mounts on standard vertical 89 style bracket. Gold plated modular jack contacts and 110 termination. Includes clear caps and nylon wire guide. Wiring is color coded for both 568A and 568B codes.



Part #	Description
110-PP5E-068-89	6 Ports, Bracket Included
110-PP5E-088-89	8 Ports, Bracket Included
110-PP5E-128-89	12 Ports, Bracket Not Included

### 110 Termination "L" Type - RJ 45 Ports

Standard spacing for mounting on 19" EIA standard racks. Gold plated modular jack contacts and 110 termination. Clear caps and nylon wire guide included. Wiring is color coded for both 568A and 568B codes.



Part #	Description
110-PP5E-248L	24 Ports, 1U
110-PP5E-488L	48 Ports, 2U



## Category 3 Telco Connection

All patch panels will mount on 19" standard EIA racks. Gold plated modular jack contacts. Telco 50 pin male or female connector with gold plated contacts. Contacts are soldered and insulated by heat shrink tubes. Standard wiring is USOC, AT&T (EIA/TIA 568B). Special wiring is available. Custom, NC/NR Ordering Information: XX = Ports (24, 32, 48, 68, 96); JJ = Jacks (4C = RJ11, 6C = RJ25, 8C = RJ45); W = Wiring (ATT = AT&T, USOC = USOC)



Part # DC-PP-(XX)P-(JJ)-(W)

## 110 Type Mounting Blocks, Single and Double Jack

### Single Jack

Single jack, screw-on cover. Comes with double sided sticker and mounting screws. Gold plated contacts and 110 type IDC termination with 2 pair caps. Wiring is 6P4C and 6P6C -- USOC 8P8C -- AT and T.

Part #	Description
PT-1103-4/UL	RJ11, 4C
PT-1103-4C	RJ11, 4C
PT-1103-6/UL	RJ11, 6C
PT-1103-6C	RJ11, 6C
PT-1103-6DEC	DEC type jack
PT-1103-6DEC/UL	DEC type jacks, UL
PT-1103-8/UL	RJ45 regular
PT-1103-8CK	RJKeyed
PT-1103-8K/UL	RJ45 keyed
PT-1103-8C/UL	RJ45 regular

### Double Jack

Double jack, screw-on cover. Comes with double sided sticker and mounting screws. Gold plated contacts and 110 type IDC termination with two pair caps.

Part #	Description
PT-1104B-66/UL	2 RJ11, 6C, UL
PT-1104B-66D/UL	Dual port, UL
PT-1104B-68K/UL	1 RJ11, 1RJ45 keyed
PT-1104B-6DD	IDC6DEC dual surf.
PT-1104B-6DD/UL	One keyed port 2 DEC type
PT-1104B-88/UL	2 RJ45, regular
PT-1104B-88K	2 RJ45, one keyed port
PT-1104B-88K/UL	2 RJ45
PT-1104B-8KK	2 RJ45, dual keyed port

## Cat 5e Feed Thru Keystone Jacks

These 8P8C jacks allow back to back feed through of modular signals. Also doubles as modular coupler. Mounts into WPP, WP-M Keystone Cutouts. Gold plated contacts. Color is black.



Part # DC-1021-8-BK-5E

## K Series Plates

Single gang plates. Up to six rectangular openings for keystone type inserts. UL Listed, pre-packaged in header bags. Clear label covers for screw holes. CC = Available Colors: IV (Ivory) or WH (White). X = Port Options: 1, 2, 3, 4 or 6.

Part # WPP-K(X)-(CC)



# Data Communications



## Original Wall Plates

Single gang plates. Up to six rectangular openings for keystone type inserts. UL Listed. CC = Available Colors: IV (Ivory) or WH (White). X = Port Options: 1, 2, 3, 4 or 6.

Part # WPP-(X)A-(CC), WPP-(X)-(CC)

## Keystone Jack, Data Outlet

CC = Available colors.

## K Series 180° Termination Jacks

110 Termination with 2 pair clear caps. 50µ" gold plated jack contacts. Category 5 enhanced. Both 568A and 568B color coded terminal. Terminate 22-26 AWG solid wire.



Part #	Description	Available Colors
DC-VC5-K8-(CC)	Cat 5e RJ-45, 568A & B Coded	BK (Black), BL (Blue), GN (Green), IV (Ivory), OR (Orange), RD (Red), WH (White), YW (Yellow)

## Tool Less Jacks

IDC termination. Clear see-thru caps with color code strip. Category 5 enhanced or Cat 6. Fits both K series and original wall plates.



Part #	Description	Available Colors
DC-VC5-8-(CC)TL	Cat 5e RJ-45, 568A & B coded	BK (Black), BL (Blue), DG (Dark Green), GN (Green), IV (Ivory), OR (Orange), RD (Red), WH (White), YW (Yellow)
DC-VC6-8-(CC)TL	Cat 6 RJ-45, 568A & B Coded	BK (Black), IV (Ivory), WH (White)

## Category 6 Data Outlets

### 180° Termination Jacks

110 Termination, with two pair caps. TIA568A (8T) and TIA568B (8A) or both (8) color coded. 50µ" gold plated jack contacts. Category 5, UL Listed, TSB40A. Terminate 22 - 26 AWG solid wire.



Part #	Description
DC-VC4-8A(CC)	AT & T 8P8C
DC-VC5-8A(CC)	RJ-45, 568B code (AT & T)
DC-VC5-8-(CC)	RJ-45, 568A and B code (180°)
DC-VC5-8T(CC)	RJ-45, 568A code

### 180° 110 Termination Jacks

110 / KRN Termination, with 2 pair clear caps. 50µ" gold plated jack contacts. Terminal with both 568A and 568B color codes. Fits both K series and original wall plates. Terminate 22-26 AWG solid wire.

Part #	Color
DC-VC6-K8-BK	Black
DC-VC6-K8-BL	Blue
DC-VC6-K8-IV	Ivory
DC-VC6-K8-WH	White

### 90° 110 Termination Jacks

110 Termination, with 2 pair clear caps. 50µ" gold plated jack contacts. Terminal with both 568A and 568B color codes. Fits both K series and original wall plates. Terminate 22-26 AWG solid wire.



Part #	Description	Color
DC-VC6-8-BK-R	Unshielded	Black
DC-VC6-8-BL-R	Unshielded	Blue



## Category 6 Data Outlets (cont.)

### 90° 110 Termination Jacks

Part #	Description	Color
DC-VC6-8-IV-R	Unshielded	Ivory
DC-VC6-8-WH-R	Unshielded	White
DCS-VC6-8-BK-R	Shielded	Black

## Keystone Feed Thru

Category 6 RJ-45 8P8C.



Part #	Color
DC-1021-8-BK-6	Black
DC-1021-8-IV-6	Ivory
DC-1021-8-WH-6	White

## Surface Mount Blocks

110 Termination, with 2 pair clear caps. 50µ" gold plated jack contacts. Both 568A and 568B color coded terminal. Terminate 22-26 AWG solid wire. Accessories included. Wood screws. Blue and red icons. Clear terminal caps and nylon wire ties. Clear plastic label and paper inserts. Double sided sticker.



Part #	Description	Color
PT-1163-8-IV	Single Port	Ivory
PT-1163-8-WH	Single Port	White
PT-1163-8-GR	Single Port	Gray
PT-1164-8-GR	Dual Port	Gray
PT-1164-8-IV	Dual Port	Ivory
PT-1164-8-WH	Dual Port	White

## 110 Type Wall Jacks

### Single

Single jack plastic fittings for PT-113C-UL wall plates. UL Listed, gold plated contacts and 110 type termination. Wiring is 6P4C and 6P6C -- USOC 8P8C -- AT and T. Copy of wiring code included.



Part #	Description
PT-113-4C-UL	6P4C, USOC
PT-113-6C-UL	6P6C, USOC
PT-113-6D-UL	6 DEC type
PT-113-8CK-UL	8P8C keyed, AT and T
PT-113-8C-UL	8P8C, AT and T

### 110 Type Dual Wall Jack

Double jack plastic fitting for PT-114C-UL wall plated. UL Listed, gold plated contacts and 110 type termination. Wiring is 6P4C and 6P6C -- USOC 8P8C -- AT and T.



Part #	Description
PT-114-44-UL	2 6P4C, USOC
PT-114-66-UL	2 6P6C, USOC
PT-114-68K-UL	1 6P6C voice, 1 8P8C, AT and T
PT-114-6DD-UL	2 6-DEC type
PT-114-8KK-UL	2 8P8C keyed, AT and T

# Data Communications



## Keystone Jacks, Data Outlet, Right Angle Termination

CC = Available colors.



Part #	Description	Available Colors
DC-VC5-8-(CC)-R	Cat 5e R-45, 568A & B Coded	BK (Black), BL (Blue), GN (Green), IV (Ivory), OR (Orange), RD (Red), WH (White), YW (Yellow)
DC-VC5-8A-(CC)-R	Cat 5, RJ-45, 568B coded	BK (Black), IV (Ivory), OR (Orange)
DC-VC5-8T-(CC)-R	Cat 5 RJ-45, 568A coded	BK (Black), GN (Green), IV (Ivory), OR (Orange), RD (Red), WH (White), YW (Yellow)
DC-VC4-6-(CC)-R	Level 4, Voice, RJ-25 (6p6c), USOC coded	BK (Black), IV (Ivory), WH (White)

## Plastic Wall Plates

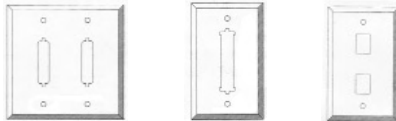
Single or dual hole, single gang wall plates. UL Listed, copy of wiring code included. Single gang box or PT-115BUL type box.



Part #	Description
PT-113C-UL	Single hole wall plate
PT-114C-UL	Dual hole wall plate

## Stainless Steel Wall Plates

### Double Gang



Part #	Description
WP-15-1HD	For DB15, 1 hole
WP-25-2HD	For DB25, 2 holes
WP-25-4HD	For DB25, 4 holes
WP-25MD	For DB25 1 hole, 2 keystone, 2 hole
WP-37-1HD	For DB3, dual gang, 1 hole
WP-C-2HD	For coax, 1/2" dia, 2 hole
WPD	Blank plate, double gang
WP-M-4D	For keystone jack, 4 holes

### Single Gang

XX = Number of Holes: 1 or 2 (1, 2, 3, 4, or 6 or part number WP-M-XXH).

Part #	Description
WP-15-(XX)H	For DB15
WP-25/C	For DB25, coax 1/2" dia.
WP-25M	For DB25, keystone jack
WP-25T/11	For DB25, Twinax, 1 hole
WP-25/TW	For DB25, Twinax, 1 hole
WP-25-(XX)H	For DB25
WP-36-1H	For centronics 36, 1 hole
WP-9-(XX)H	For DB9
WP-C/M	For keystone jack and coax, 1/2" dia.
WP-C-(XX)H	For coax feedthru, 1/2" dia.
WP-C-(XX)H3/8	For coax, 3/8" dia.
WP-IBM/C	For data and coax
WP-IBM/M	For data connector, keystone jack 1 hole
WP-IBM-1	For data connector
WP-M-(XX)H	For keystone jack
WPS	Blank plate, single gang
WP-TW-(XX)H	For Twinax



## Stainless Steel Wall Plates (cont.)

### For Universal Fitting

Part #	Description
WP-MA-2	Dual port
WP-MA-4D	Quad port, double gang

### Phone & Data Jacks

Gold plated contacts and straight thru (data) or reversed wiring (phone).



### Data Jacks

Color is ivory.

Part #	Description
DC-102-4CD	6P4C, RJ-11
DC-102-6CD	6P6C, RJ-25
DC-102-8CD	8P8C, RJ-45
DC-102-10CD	10P10C, Data Only

### Phone Jacks

Part #	Description	Color
PT-102-4C	6P4C	Ivory
PT-102-6C	6P6C	Ivory
PT-102-6C-BK	6P6C	Black
PT-102-6C-GR	6P6C	Gray
PT-102-6C-WH	6P6C	White
PT-102-8C	8P8C	Ivory

### 3 Prong Round Cable Plugs

For solid conductor round cables.

Part #	Description
PT-0388R	RJ45 8P8C
PT-0388KR	RJ45 8P8C, Keyed
PT-03A88R	RJ45 8P8C - need to use crimp tools with AMP type dies
PT-0388RE	8P8C Economic

### Cat 6 & Cat 5e Plugs

Exclusive staggered plug to ensure Cat 6 and Cat 5e high performance. Polycarbonate, RJ45 plug. Staggered alignment termination. 50µ" gold plated contacts, plug geometry meets FCC 68.500 and IEC 60603-7 specifications for modular plugs.

Part #	Description
PT-0688-50UL	Cat 6
PT-05E88-50UL	Cat 5e, no loading bar
PT-03E88RG-50UL	Cat 5e

# Data Communications



## CAT6 Patch Panels

Keep your server room and wiring closet organized with this high performance Cat6 patch panel. This panel is compliant with EIA/TIA category 6, draft 11 specifications and features 110 IDC punch down terminations that can be wired in either 568A or 568B configuration. Includes a surface mount bracket.



## CAT6

These panels are compliant with EIA/TIA category 6, draft 11 channel performance specifications and can easily be configured to either 568A or 568B wiring scheme.

Part #	Description
UTP-9000	12-Port, 568 A&B surface mount, 89D bracket
UTP-9012	12-Port, 568 A&B, 19" rackmount
UTP-9016	16-Port, 568 A&B, 19" rackmount
UTP-9024	24-Port, 568 A&B, 19" rackmount
UTP-9032	32-Port, 568 A&B, 19" rackmount
UTP-9048	48-Port, 568 A&B, 19" rackmount

## Cat6 Feed Thru Panels

Part #	Description
UTP-9108	8-Port with inline coupler and bezel
UTP-9112	12-Port with inline coupler and bezel
UTP-9116	16-Port with inline coupler and bezel
UTP-9124	24-Port with inline coupler and bezel
UTP-9132	32-Port with inline coupler and bezel
UTP-9148	48-Port with inline coupler and bezel

## Cat 5e Patch Panels

Port patch panels 12, 24, 48 and 96 feature 110 punchdown blocks for easy installation. Panels are fully Category 5e rated and can be used in both T568A and T568B configurations.



Part #	Description
UTP-8000	12-Port, 568 A&B, with wall mount
UTP-8012	12-Port, 568 A&B, 19" rackmount
UTP-8024	24-Port, 568 A&B, 19" rackmount
UTP-8048	48-Port, 568 A&B, 19" rackmount
UTP-8096	96-Port, 568 A&B, 19" rackmount
UTP-8024A	Wall mount for UTP-8024
UTP-8048A	Wall mount for UTP-8048

## CAT6 Connectors, Adapters and Keystone Jacks

### CAT 6 Keystone Jacks

Wire your home or office with Cat6 compliant 110-Type Keystone jacks. These jacks feature highly visible color-coded labels, allowing them to be easily configured to either 568a or 568B wiring schemes. Their compact size allows them to fit into any conventional faceplate or surface mount box.



Part #	Description
UTP-7100	RJ45, Ivory
UTP-7100B	RJ45, Blue
UTP-7100GRN	RJ45, Green
UTP-7100O	RJ45, Orange
UTP-7100R	RJ45, Red
UTP-7100W	RJ45, White
UTP-7100Y	RJ45, Yellow

## CAT6 Connectors, Adapters and Keystone Jacks (cont.)

### CAT 6 Surface Mount Boxes

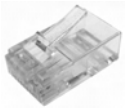
Network your home or office with easy to install surface mount jacks. These Cat6 rated surface mount jacks allow you to network your home or office without cutting holes in your walls. Jacks can be attached to all most any surface via double sided tape, cable ties or mounting screws.



Part #	Description
UTP-7801I	RJ45, Single, 568 A/B, Ivory
UTP-7801W	RJ45, Single, 568 A/B, White
UTP-7802I	RJ45, Dual, 568 A/B Ivory
UTP-7802W	RJ45, Dual, 568 A/B, White
UTP-7804I	RJ45, Quad, 568 A/B, Ivory
UTP-7804W	RJ45, Quad, 568 A/B, White

### CAT6 500 Mhz Connectors Stranded and Solid

One-piece wire management load bar, keeps all 8 conductors in staggered arrangement, reducing Near End Cross Talk. Meets current EIA/TIA CAT6 specifications. Unique Phosphor Bronze contact design works with both solid and stranded conductors.



Part #	Description
UTP-7010	2-piece assembly, RJ45 8P8C
UTP-7010-10	10-PK, 2-piece assembly, RJ45 8P8C
UTP-7010-25	25-PK, 2-piece assembly, RJ45 8P8C
UTP-7010-50	50-PK, 2-piece assembly, RJ45 8P8C
UTP-7010-99	100-PK, 2-piece assembly, RJ45 8P8C

### CAT5e RJ45 Connectors 350Mhz

These RJ45 Modular plugs allow you to easily terminate Cat5e cables to the exact length required for a neater and more organized cable installation. These quality connectors terminate 24 and 26 AWG solid wire and feature staggered 50 Micron gold plated contacts to reduce near end cross talk data.



Part #	Description
UTP-2015	RJ45 8P8C, Solid, 50Micron, 350Mhz
UTP-2015-10	RJ45 8P8C, Solid, 50Micron, 10 pack
UTP-2015-25	RJ45 8P8C, Solid, 50Micron, 25 pack
UTP-2015-50	RJ45 8P8C, Solid, 50Micron, 50 pack
UTP-2015-99	RJ45 8P8C, Solid, 50Micron, 100 pack
UTP-2020	RJ45, 8P8C, Shielded, 50Micron, bulk

## Faceplates and Keystone Jacks

### CAT5e Keystone Jacks



Part #	Description
UTP-3600	RJ45, Ivory
UTP-3600B	RJ45, Blue
UTP-3600GRN	RJ45, Green
UTP-3600O	RJ45, Orange
UTP-3600R	RJ45, Red
UTP-3600W	RJ45, White
UTP-3600Y	RJ45, Yellow

